



BALLARAT BASE HOSPITAL

COMMUNICATOR

NO: 21—OCTOBER - DECEMBER '91



BALLARAT CO-OPERATIVE CREDIT UNION LIMITED

Ararat

171 Barkly Street, Ararat. 3377
Box 304. Phone 52 2853

**Ballarat
(Head Office)**

30 Doveton Street Nth., Ballarat. 3350
Box 471. Phone 31 4411

Ballarat Base Hospital

Mair Street, Ballarat. 3350
Phone 33 0397

Daylesford

50 Vincent Street, Daylesford
Phone 48 2889

Wimmera

Ian Davidson Real Estate
63 Pynsent Street, Horsham
Phone 82 5211

Stawell "Browse In"

110 Gold Reef Mall, Stawell
Phone 58 2857

Colac

203 Murray Street, Colac
Phone (052) 31 3672

- ★ SAVINGS ★ LOANS ★ CHEQUE ACCOUNTS ★ REDI-CARD (7 Day Access)
- ★ INVESTMENTS ★ PAYROLL DEDUCTIONS ★ CHRISTMAS CLUB ACCOUNTS
- ★ SUPERANNUATION ★ EDVEST RETIREMENT SERVICE ★ INSURANCE
- ★ TRAVELLERS CHEQUES ★ PERSONAL INVESTMENT ADVICE

FROM THE C.E.O.'S DESK



As 1991 comes to a close, we can all look back on a year that has certainly broken records in terms of the pressures experienced on the hospital and particularly the staff.

We have experienced the worsening of the economy on a National scale and more particularly, in Victoria with unemployment now running at 11%. This together with a significant level of State debt has regrettably and perhaps for the first time in the history of hospital funding seen substantial cuts being imposed as the State Government struggles to make ends meet. At the same time the hospital has experienced a curtailment in elective surgery in part due to the substantial pressures created by an ever growing percentage of standard patients not being matched by extra budget allocations.

All of these pressures have had their affect on staff and it is clear that the unsettling nature of these changes has led to a heightened level of anxiety in terms of future employment and the perceived futility of being able to meet the almost unlimited demands of the public for yet more and more service.

The community is at last starting to appreciate that there is a limit to which the hospitals can cope with such change and this in turn is causing Governments to consider priorities in terms of the way health services are provided.

It is very clear that payment by service on demand, which has been the way of hospital funding for decades in the past is fast coming to a close.

There are clear indications from both the Federal and State Governments through a variety of health related reviews, that new methods of financing, with payment being directly linked to the number and types of cases treated will be introduced. Financial survival will depend on a hospital's ability to relate it's running costs to the case payments made either from private insurance funds or from Medicare. The State Government

has indicated that from July, 1992 this type of approach will be introduced with the full affect of the program being spread over 5 years. These substantial changes in hospital funding are not unique to Victoria or Australia, in fact they are World wide. This is because hospital and health costs are absorbing an increasing share of the wealth owned by every citizen, expressed as G.D.P. At present Australia spends approximately 8% on health, a level slightly higher than average for western societies, but certainly well below the frightening levels now in existence in the U.S.A., now standing at about 12%.

I cannot offer any easy solution to this problem sufficient to say that the pressures experienced during 1991 will undoubtedly continue certainly throughout 1992 and well into 1993.

Continued attention to work practice reforms to limit the growth in staff related costs will be increasingly directed by Governments of all persuasions in their quest to keep costs in check.

Rather than have such reforms imposed by other Government Agencies, self help is certainly likely to produce a better result. Such changes should not be seen in the light of reducing workforce necessarily, but rather obtaining better work value from the existing workforce, finding better ways of doing things and in turn making jobs more interesting for all.

The Board appreciates that these pressures can be very stressful and supports efforts being taken to introduce appropriate counselling to minimise the impact on staff striving to provide quality services.

Organisation Review

As part of the challenge to address the new methods of funding, ie: case related, the Board of Management has embarked on the second phase of Organisation Review which will see the establishment of formal clinical divisions and units in the hospital. A key to this process will be the grouping of all related specialities together in separate Divisions and to relate in a collegiate manner, nursing and medical staff together. The affects of these changes will be minimal, if at all, to most staff in the hospital with the exception that it is the Board's intention that more decisions will occur closer to where the patients are and thus permit a better use of resources and more importantly, improved service delivery to patients.

Part of the Organisation Review, includes the integration of psychiatric services, recently announced by the Government to be effective from 1st July, 1992. The Board is seeking to provide an environment in which these two relatively separate areas of health care come together so that from the patient's point of view, it will be as if there had never been any division. This integration program will create many challenges, particularly where staff in related areas such as domestic services, administration and the like will be required to merge into single departments for the overall provision and delivery of services. Staff in Mental Health Institutions work under different awards than is the case in acute general hospitals and for a short time these differences will need to be tolerated until full integration is achieved.

There will be a challenge for the hospital in the delivery of new forms of service not hitherto provided. For the first time, the Base Hospital will be active in community mental health programs and regional psychiatric consulting services. At the same time we will be required to maintain a substantial presence on the Lakeside site as well as being responsible for two wards at Aradale.

A number of task groups have been set up to help the hospital work through this integration phase and progressively all staff will become involved in the process either by active participation as members of a Committee or through information that will be passed on to you.

At the end of this program of change, the major beneficiary will be the patient. Secondly, the community will be relieved of some of the major concerns that have surfaced recently in the press about State run psychiatric services.

SEASONS GREETINGS

It is this time of the year when we put aside the problems and issues of the type I have touched on above and turn to family and friends to celebrate the festive season.

I would like to take this opportunity of thanking all members of staff no matter in what position they hold for their dedicated work to the Ballarat Base Hospital over the last year and to wish you all the compliments of the season and a safe accident free holiday period.

E.D. MACAULAY
Chief Executive Officer

★ THANKYOU MARY ★

December saw the sad departure of one of the finest nurses ever to work at Ballarat Base Hospital.

MARY MORCOM trained at BBH in 1957 - 1960. She also completed her staff year at BBH. In 1961, she completed her midwifery training at Royal Women's Hospital, Melbourne. Mary completed a Ward Management Diploma at the Australian College of Nursing in 1972.

In 1962 Mary returned to BBH to work in Maternity for five years, then took charge of the old Ward 10 for four years. Following renovations to Y3, Mary transferred to Y3 and stayed for approximately seventeen years. Mary was supervisor of Yuille House for three years. During the latter part of Mary's career, she held the position of Admission and Discharge Co-ordinator.

Mary says she has always had a wonderful team to work with and attributes her many happy moments at BBH to the great team spirit shown by her workmates.

Due to her conscientious efforts and dedicated nature, Mary commanded respect from all quarters of the hospital Engineering, Medical, Catering, indeed all departments, had an excellent working relationship with Mary.

Whilst her position will be filled, Mary will never be replaced.

Thank you Mary from everyone of us.



GENERAL
SERVICES
DIVISION



GENERAL SERVICES DIVISION

1992 has not been the easiest of years for staff within the General Division. This latter part has seen significant pressures through the E.R.P. Program, Food Services Review and Award Restructuring. Co-operation from all levels of staff has been first class. Differences of opinion have been aired, and listened to. Everyone has had an opportunity.

The E.R.P. program has been a difficult process, but which will allow us to treat more patients - always our ultimate aim.

I would like to take this opportunity to thank the staff for their support during the last 5 months.

A very Merry Christmas and a safe and prosperous New Year to all.

B.M. BOLGER
ACTING DIRECTOR OF GENERAL SERVICES.



Department of Community Medicine staff (L - R) are CAROLINE HUNT, NICOLE BATH, DORA PEARCE, KAYE MURRAY and PROFESSOR HEDLEY PEACH.

DOES HE UNDERSTAND?

When Jesus was born and grew up into manhood, He suffered in many various ways. He experienced poverty, the pain of growing up, hunger and thirst, tiredness, sorrow. He was misunderstood, mistreated and falsely accused. He was spat upon and bashed. He experienced loneliness, a false trial, a cruel death and temptation.

Because of these and other sufferings, and because He came alive again, Jesus is well able, as the Christ of Christmas, our Great High Priest, to understand our feelings as we suffer. Not only does He understand our sufferings, but because of His love and power there is no one He cannot help.

Yes, He does understand and wants to help you. Why not begin a life time of trusting Jesus today?

Read Hebrews 3: 9 - 10 and 4: 14 - 16.

Merry Christmas and Happy New Year to all staff and their families.

DOUG VALPIED
HOSPITAL CHRISTIAN FELLOWSHIP.

DENTAL CLINIC ACTION



NORMIE SELMON (Uncle Wester) had to get into the action grabbing LYNETTE REDMAN for this snap.



LAURIES official opening speech!



John THOMAS painted it.



ALL SMILES AFTER THE FIRST RENOVATIONS SINCE 1955!!!

REDEVELOPMENT

The Yule season in 1991 is a joyous season for the Redevelopment team as the gestation period for the North Block nears its end. We have been drawing parallels between the Advent Festival in the Christian calendar, and the redevelopment activity as at December 1991.

We believe that the inception of the North Block occurred by immaculate conception, but I take the point that there are many in the hospital who believe that a more natural conception took place. The birth was due for 25 December or thereabouts, but the North Block revealed that it was human and not divine by arriving late. (Typical first baby). Still, as one wiser mind once stated "Better late than never".

The North Block will be born some time in the first quarter of 1992. The exact day, typical of obstetric cases, is difficult to predict. The Project Manager, Robert Dunster, is attempting to quantify what work remains to complete the first two floors, and may be able to give the Project Executive a reasonable estimation of a handover date at the meeting scheduled for 18 December 1991. Be assured that you people who are concerned with the organising of the occupation of the new facilities will be informed as soon as the Redevelopment Team has any hard information. There are clinical decisions which will impact on the actual date of commencement of operations in the new theatres, as there must be sufficient beds available to support the theatres in the North Block to avoid where possible the long transport of patients from Yuille House via the Ground Floor link.

We believe that the users have assisted the consultants to produce a wonderful facility, which will be the envy of most hospitals in the State, if not the Nation. We acknowledge that not all features desired by all users have been able to be incorporated, as the relative importance of each activity in the larger picture dictated the allocation of space, and there is always the big bogey-man lurking in the background - 'The Budget' - which sorted out the 'must-haves' from the 'highly-desirables'.

Current occupants must also recognise that the design advice to the consultants was given by the incumbents of the positions in 1988 and 1989, and the ideas of those people may not be those of the current holders. Changes to the design cost money in the additional work which is required by the architects, and contractors just love variations to the specification as tendered. Please be understanding on this point.

Finally and most importantly, what shall we drink with Christmas Dinner. If you have an unlimited budget, start with a classy Australian sparkling wine, Domaine Chandon Brut 1988 or Seppelt Salinger 1988. The choice of a white wine is much more difficult, as the field is enormous. The following are recommended;

- . Shaw and Smith Sauvignon Blanc
- . Katnook Estate Sauvignon Blanc
- . Lindeman's Hunter River Semillon
- . Coldstream Hills Chardonnay
- . Petaluma Rhine Riesling
- . Michelton Marsanne

Red wine produces almost as much trouble in making a selection. I don't think you would be disappointed if you make a selection from the following list;

- . Mt.Langi Ghiran Shiraz
- . Wynn's John Riddoch Cabernet Sauvignon
- . Lindeman's Limestone Ridge or St.George
- . Orlando Jacaranda Ridge Cabernet

For those on a budget, try these suggestions;

- . Yalumba Angas Brut Champagne
- . Penfold's Koonunga Hill Semillon/Chardonnay
- . Oxford Landing Chardonnay
- . Rosemount Fume Blanc
- . Leasingham Domaine Cabernet Malbec
- . Hardy's McLarenvale Hermitage
- . Yalumba Galway Hermitage
- . Orlando Jacobs Creek (especially 1990)

We thank you all for your assistance during 1991.
We have enjoyed working with you.

A very merry Christmas and best wishes for a healthy and prosperous 1992, to everyone.

HELEN ROBINSON & BILL WALLACE
THE REDEVELOPMENT TEAM

ODD SPOT 

Who was feeling **GUMMY** when they turned up to work and had to return home to get their false teeth?

AFTER HOURS

DAVID BORYS for the past five years has held the position of Occupational Health and Safety Officer at Ballarat Base Hospital. He was previously employed at P.G.H. Ceramic Tiles for ten years as a payroll, personnel and safety officer.

After hours David is well known in the Ballarat area for his sporting achievements. David for the past thirteen years has been a member of the Eureka Athletic Club which he competes for in track and field during summer, and cross country events in the off season.

His list of successes are numerous - club two mile champion, eight times in ten years, including winning six years consecutively. David has also won the champion of champions' trophy five times, and this year achieved the double by winning the club aggregate which is awarded for consistency and performance.

During the early 80's David ran for the Western Suburbs Club in the Melbourne interclub competitions.

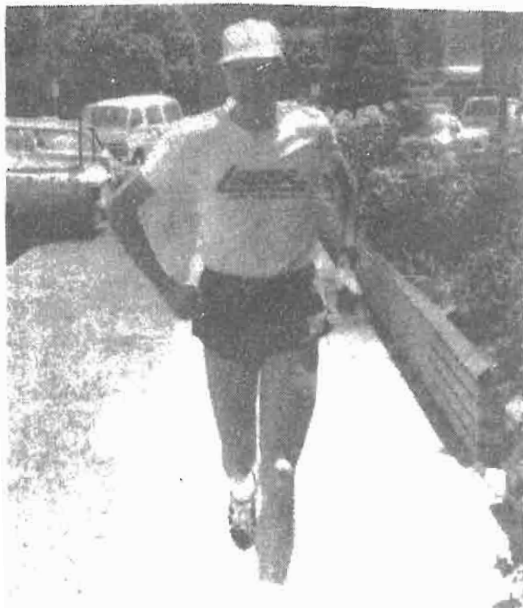
His most satisfying personal achievement was running a sub fifteen minute 5,000 metre time at Olympic Park in 1987.

For the past eighteen years, David has played drums in a variety of bands, including No Standing, Wavelength, Tombola, Toledo and Image.

His musical preference is modern jazz and after hours enjoys nothing better than listening to CDs on his Hi-Fi with the likes of his favourite artists including Miles Davis, Wynton Marsalis and Spyro Gyra.

Another special interest is the arts where he particularly enjoys surrealism and impressionism.

Married to Maree with two young children, Angie aged five and Sebastian aged three, family life also keeps David very busy.



DAVID THE RUNNER. 🎓



David the DRUMMER, complete with coat AND part 1

O. H. & S.

'Safety... it's good for business' or at least so the advertisement on the TV says. But can you believe everything you see on the TV and what is "Safety" anyway?

See if you can gain a clearer picture by completing this questionnaire below.

1. Work related injuries are caused by ..
- (a) Unsafe acts and unsafe conditions
 - (b) Carelessness of employees
 - (c) Symptomatic of a breakdown in the management system

Responsibility for OH&S in the workplace lies with ..

- (a) Paul Keating
 - (b) Occupational Health & Safety Authority
 - (c) Anyone but me
 - (d) Management
 - (e) All hospital staff
 - (f) Both (d) and (e)
2. There are many laws and standards covering OH&S including ..
- (a) Dangerous Goods Act and Regulations, Manual Handling Regulations and Code of Practice
 - (b) Australian Standards on Screen Based Equipment, Issue Resolution Regulations
 - (c) Draft Regulations on Plant Safety and Workplace Substances
 - (d) Readers Digest Guide to Managing OH&S
 - (e) All except (d) and who wrote this questionnaire anyway?
3. The primary purpose of an accident investigation is to ..
- (a) Find the worker at fault and give that person a jolly good thrashing

- (b) Look for unsafe acts and conditions
 - (c) Identify essential contributing factors/ causative events and take action to prevent a recurrence
5. The role of the OH&S Officer is ..
 - (a) To write questionnaires
 - (b) To "police" OH&S laws
 - (c) To be responsible for the health and safety of staff
 - (d) To provide information, assistance and advice to managers on OH&S
 6. Ergonomics could be defined as ..
 - (a) Something to do with finance
 - (b) Fitting the task to the person
 - (c) A swear word invented by Paul Keating
 - (d) Fitting the person to the task
 7. The annual cost of work related injuries in Australia is ..
 - (a) \$20.00
 - (b) \$250,000
 - (c) 6 billion dollars
 - (d) 1 million dollars
 8. Health and Safety Representatives have certain rights under law to carry out duties on behalf of a Designated Work Group. H&S representatives are appointed by ..
 - (a) The relevant union and its members
 - (b) Management
 - (c) The OH&S Officer
 - (d) Paul Keating
 9. The most effective way to control work place risks is ..
 - (a) Personal protective equipment
 - (b) Control the risk at source
 - (c) Put a band-aid on it
 - (d) Ignore it

Correct Answers:

Question 1 - c; 2 - f; 3 - e; 4 - c;
 5 - d; 6 - b; 7 - c; 8 - a; 9 - b.

CHILDRENS WEEK

A group of approximately thirty Year Seven students from Loreto College presented our Children's Ward with several colourfully decorated mobiles to celebrate Children's Week.

The students put a lot of time and effort into their project as part of their religious class and their gift was very much appreciated.

Thanks to Melissa Griffin and all students of Year Seven for their kind efforts.



CUTE KID COMPETITION

★GEOFF ROGERS from Pathology was our cheeky "Cute Kid".

Eight correct entries were submitted, and the winner of the \$25.00 prize **MAREK AUCHETTI** ★
from Rehabilitation Ward.

If you think you know this "Cute Kid" who is currently working at our hospital, put the name together with yours, onto paper. Send it to Gary Greville, Communications.

The winner will receive a \$25.00 counter meal for two, at the Foundry Hotel - compliments of the B&H Social Club Inc

SO - BE IN IT TO WIN IT!

clue. NOT RELATED TO MALCOLM * * * * *



↑
Social Club Committee member HELEN ROBINSON hands over the \$25.00 Foundry Hotel Counter Meal Voucher to **MAREK AUCHETTI**.

OUR NEW J.P.

Congratulations to DESLEY BEECHEY on her appointment as a Justice of the Peace on Tuesday, 30th December 1981.

The appointment has pleased Desley as her father was a J.P.

Desley lives at Burnmoot, where there was need for another J.P. in the community.

Desley will be available to staff requiring certain documents witnessed. She can be contacted in Ward E1.

Certificate

Justice of the Peace

Awarded to

DESLEY BEECHEY

MIDWIFE, E1, BBH.

CONGRATULATIONS DESLEY!



CURTAINS (unlined)
Beige/Natural tonings
to fit window 150 x 200 (2 pairs)
to fit window 240 x 210 drop \$150.00 the lot

CURTAIN (lined)
for children's room
to fit window 150 x 120 drop \$50.00

RUG (pure wool)
Beige/Brown tonings
90cm x 160 cm
- Never used (new price \$250) \$120.00

BATHROOM ACCESSORIES (Caroma)
Yellow
includes Towel Rails, Soap Holder,
Toothbrush Holder etc. \$20.00 the lot

Phone: 302734 (after 5 pm)



Members of the MARY HELEN AUXILIARY were recently treated to a tour of the North Block with HELEN ROBINSON, which from all accounts they thoroughly enjoyed.

THE BEST OF CARE

The best of care at
Ballarat Base Hospital

Sir,

I write in regard to the Ballarat Base Hospital. As an inpatient in 11 Ward (orthopaedic), this being my second stay in recent years, I came in with high expectations and have not been disappointed with my care, comfort and medical attention.

All have been delivered by the nursing staff, doctors and surgeons, and ancillary staff with expertise, professionalism, humour and all the things we need to recover.

Mike Herbert,
Smythesdale

(Letters to the Editor
The Courier, November 25, 1991)



BBH SOCIAL CLUB NEWS

Billy Guyatt's Discount Night

This night proved to be a great success with many people receiving good discounts from Billy Guyatt's. Many people have commented on the night and have asked if there will be another night at any stage. Another night will be arranged for next year. Thank you to all who supported this night.

Suggestion for the Month

Congratulations to KARL DEBNEY, Security, who has won the suggestion from last issue. Karl has won a Swaggers Restaurant meal discount booklet.

His suggestion was for some discounts at places like Pizza Hut, Ribs-on-the Run etc.

After discussion with these places, a discount has been arranged, to be reviewed in a few months. These are as follows:

Pizza Hut -

Choice of free garlic bread, or
Two cans of any soft drink with any order
(arranged with manager, Gary McEldrew)

Ribs-on-the-Run -

Free chocolate mousse with any order
over \$15.00
(arranged with manager, Alex Sinclair)

These are to be reviewed after Christmas with the view to increasing these offers to our members. The more support given, the better the offers will become. This is the beginning of a new system for both these take-away places, so the offers are only until reviewed.

These offers are **only for Social Club** members and card must be presented beforehand. If ordering by phone, please ensure that you say you are a member of the Social Club, and have your card ready on delivery.

Phantom of the Opera

On the 14th. December 1991, the Social Club had its **eighth trip** to the Phantom of the Opera. Support has been wonderful. Thank you for all who participated.

Bowls

After the retirement of RON BOWEN, DAVE RICHARDS has taken over the role of conducting the Friday night bowls games.

The committee would like to thank Ron Bowen for his efforts in his work with the bowls, and also welcome and thank Dave for enabling us to continue. For any queries regarding bowls nights, please contact Dave, Environmental Services.

Picture Nights

There were thirteen picture nights run this year, with a total of 977 people attending.

Updates - Discount Book

The following businesses are to be added to your current book of members' discounts. Every year after the discount book is issued we have people still wanting to be entered into our discount book.

Please make note of the following discounts for your future use:

Dennis Stuart Auto Spares
5 Lyons Street North, Ballarat
Discount on application

Haydan Service Centre
1101 Sturt Street, Ballarat
10% of all services and repairs

Chandlers
Central Square, Ballarat
Discount on application

NB: All of the above offers are only valid on presentation of your Social Club Discount Card

WITH BEST WISHES FOR A SAFE AND MERRY CHRISTMAS AND A PROSPEROUS
NEW YEAR FROM ALL IN YOUR COMMITTEE.

CHRIS ORAM - CLERICAL RELIEVER

Chris Oram

DENNIS WAIGHT - LINEN STORES

Dennis Waight

HELEN ROBINSON - REDEVELOPMENT

Helen Robinson

NOLA MCCORMACK - WARD CLERK - DAYWARD

Nola McCormack

PAUL NANDLAL - PHARMACY

Paul Nandlal

COLIN WILSON - STORES

Colin Wilson

MARGARET BLACKSHAW - WARD ASSISTANT - Y1

M. Blackshaw

BARBARA MORRISON - OUTPATIENT RECEPTION

Barbara Morrison

JOAN CHEESMAN - CATERING

Joan Cheesman

NEVILL SMART - YARDMAN

Nevill Smart

JENNY FRASER - WARD CLERK

Jenny Fraser

HELEN HEALY - PAY OFFICE

Helen Healy

DON COLBERT - THEATRE

Don Colbert

CHRISTMAS CARNIVAL

Held 14th. November, 1991, 3.00 - 7.00 pm.
Updates will be brought to you in the next
Communicator.



A MERRY CHRISTMAS
AND A SAVE & HAPPY NEW YEAR
TO OUR FRIENDS & COLLEAGUES

from: REHAB STAFF

SOCIAL CLUB POOL COMPETITION

Another successful Pool Tournament has been completed, with the Finals Night being a good social night for all who attended.



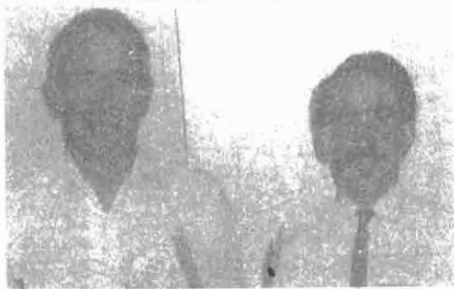
This year was the first running of a 'singles' event - looking for a BBH Champ.

The finalists were LEIGH CROSS and IAN LEISHMAN. After a close match, which could have gone either way, IAN LEISHMAN was the winner.

To top the night off, IAN LEISHMAN and DON COLBERT defeated BOB SMITH and GARY GREVILLE in the doubles final, which makes it a double victory for Ian. Well done, Ian!

Congratulations also go to all the other finalists, and many thanks to all the players who participated in the games and to those who attended our Grand Final Night making this a successful event for the BBH Social Club Inc.

WHO WILL BE THE 1992 CHAMP?



1991 Pool Finalists, (L-R)
Leigh Cross, Ian Leishman, Donald Colbert, Bob Smith
and Gary Greville.

CREDIT UNION NEWS

BALLARAT CREDIT UNION - BBH BRANCH NEWS

"Special Member" Competition

We celebrated our first year since the transfer to Ballarat Credit Union on 1st. October 1991. A "Special Member" Competition was won by WYNN ROGAN - large pizza, one video movie hire and a food hamper. Congratulations Wynn.

Suggestion Mailbox . . Win \$50

BBH Branch has had a succession of winners.

MICHELLE LAMONT - August 1991

After hours post box for BCU members-BBH Branch. When renovations take place a postal box will be made available.

MARLENE MONCK - September 1991

Parking a problem for BCU-BBH members. Two car parks are being looked into.

NORMA DERBYSHIRE - October 1991

Incentive for members to encourage non-members to join BCU-BBH Branch.

Enter your suggestion for the coming months and see if we can continue our winning run.

"Join a Friend"

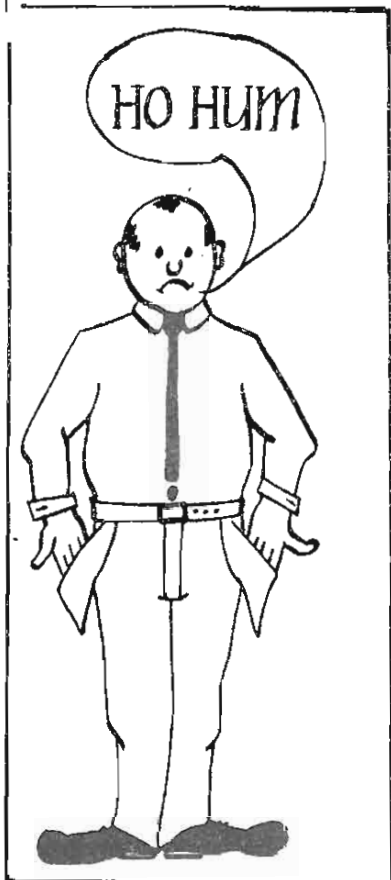
Are you a member of the Ballarat Credit Union? If you are a member and encourage a non-member to join the Ballarat Credit Union - Ballarat Base Hospital Branch with a payroll deduction you will be eligible to receive \$25 payable into your account.

CU-BBH New Employee Award - \$25

Congratulations! BETTY McGUINNESS on winning the \$25 New Employee of Ballarat Base Hospital award, compliments of the Ballarat Credit Union, BBH Branch.

THE BALLARAT CO-OPERATIVE CREDIT UNION
PROUDLY SPONSORS THE COMMUNICATOR

Join a friend.



Can you guess who had a
Christmas Club Account !!
with our
Community Credit Union?

MAURICE MOORE RUN

BASE RUNS THIRD

On Sunday, 8th. December, 1991, a team of sixteen runners competed in the annual Ballarat to Maryborough Maurice Moore Run.

The Run is held in the memory of the former Maryborough policeman who was shot and killed about six years ago.

Teams representing the Maryborough Police, Ambulance, Telecom, Hash House Harriers and Ballarat Base Hospital keenly contested the event with several brilliant performances.

Eventual winners were Hash. second went to Telecom with the Base a close third.

KEVIN DAVIES and DAVID BORYS once again put in brilliant performances, but the run of SUE HOLLIOAKE exemplified the true spirit of the run. Sue who had been ill all week volunteered to run due to a late withdrawal and completed her 4.2 km leg in 32 degree heat, exhausted. It was a great performance a great day and real team effort.

Thanks to all once again.



LORRAINE AND JEANETTE

EXTEND TO ALL BALLARAT BASE HOSPITAL
EMPLOYEES AND FAMILIES

A VERY MERRY CHRISTMAS AND
A SAFE AND PROSPEROUS NEW YEAR

BALLARAT BASE HOSPITAL BRANCH
BALLARAT CREDIT UNION



BALLARAT BASE HOSPITAL TEAM

1991 BALLARAT TO MARYBOROUGH MAURICE MOORE RUN

1st. Leg	ROB NICHOLLS	14.23	4.2 ks
2nd. Leg	TOM ROBERTS	15.55	4.2 ks
3rd. Leg	LIZ BUTLER	18.01	4.2 ks
4th. Leg	DAVID BORYS	13.28	4.2 ks
5th. Leg	ANTHONY BROOKS	15.16	4.2 ks
6th. Leg	ROSS PRIDDLE	14.39	4.2 ks
7th. Leg	DON MCKENZIE	14.26	4.2 ks
8th. Leg	CHRIS RUDDICK	14.10	4.2 ks
9th. Leg	SEBASTIAN STEENHUIS	17.28	4.2 ks
10th. Leg	SIMONE DUNN	20.00	4.4 ks
11th. Leg	KEVIN DAVIES	13.25	4.2 ks
12th. Leg	SIMONE WEBB	21.26	4.2 ks
13th. Leg	IAN McPHAN	15.48	4.2 ks
14th. Leg	NEVILLE SMART	20.16	4.2 ks
15th. Leg	SUE HOLLIOAKE	21.35	4.2 ks
16th. Leg	GARY GREVILLE	11.57	3.1 ks

Total Time

4 hrs 22 mins 12 sec

NOISE AWARENESS

NOISE!

Sometimes we hear it and sometimes we don't!

Sometimes it bothers us and sometimes it doesn't!

Stop for thirty seconds and listen to what is happening around you. The disturbances are deafening.

In the Inpatient Satisfaction Survey conducted this year, almost **every** respondent commented on NOISE! Up to 25% of inpatients felt that it caused some disturbance.

Can we reduce this. Most of it is made by US - the workers.

Suggestions

Be aware ... don't yell if you can talk. We aren't all deaf.

Shut your door.

Does your telephone need to sound like the Town Hall bells?

Walk up to people to speak to them, don't call to the end of the corridor.

Consider your colleagues - and more importantly, your patients.

Be aware ... cut down on the noise!

"Noise" "unwanted sound" is an everyday nuisance which you may have deleterious effects on the well being and work performance of those exposed to it.

Hodge B. & Thompson J.F. (1990) "Noise Pollution in the Operating Theatre" 335. 891-894.

This article suggests that preferred speech limits were often exceeded, making communication difficult because of unnecessary background noise.

Sound can be regarded as noisy when it is unwanted or objectionable, interferes with work tasks, impairs verbal communication or prevents sleep.

Assessments of noise by people are subjective and therefore differ between individuals.

J. McMILLAN
QA CO-ORDINATOR (Nursing)

★ BLUEBERRIES ★

\$6 per kg

**Proceeds to
Community Aid Abroad
(tax deductible)**

**Leave your order with
Elaine in Pharmacy**

for delivery in Jan-Feb

Personality Answer: ANDREW MAYNE
 Engineers Department

ODD SPOT



Which speech pathologist (looking very pregnant) and whilst collecting the pool car keys, was heard to say, "I hope there's room in the car for me today!"

GOSSIP

Who's the new rooster amongst the chickens in the front office?

INPUT

The Communicator is produced every three months for the staff of our hospital.

Input by staff from **all** areas within the hospital would be most appreciated and should be addressed to - Gary Greville, Communications Department.



GARY GREVILLE
Production Manager



PETER LANE
Editor in Chief

Merry Christmas

and a

Happy New Year

to all

Staff

and their families

CURTAINS (unlined)
Beige/Natural tonings
to fit window 150 x 200 (2 pairs)
to fit window 240 x 210 drop \$150.00 the lot

CURTAIN (lined)
for children's room
to fit window 150 x 120 drop \$50.00

RUG (pure wool)
Beige/Brown tonings
90cm x 160 cm
- Never used (new price \$250) \$120.00

BATHROOM ACCESSORIES (Caroma)
Yellow
includes Towel Rails, Soap Holder,
Toothbrush Holder etc. \$20.00 the lot

Phone: 302734 (after 5 pm)



Members of the MARY HELEN AUXILIARY were recently treated to a tour of the North Block with HELEN ROBINSON, which from all accounts they thoroughly enjoyed.

THE BEST OF CARE

The best of care at
Ballarat Base Hospital

Sir,

I write in regard to the Ballarat Base Hospital. As an inpatient in 11 Ward (orthopaedic), this being my second stay in recent years, I came in with high expectations and have not been disappointed with my care, comfort and medical attention.

All have been delivered by the nursing staff, doctors and surgeons, and ancillary staff with expertise, professionalism, humour and all the things we need to recover.

Mike Herbert,
Smythesdale

(Letters to the Editor
The Courier, November 25, 1991)



BBH SOCIAL CLUB NEWS

Billy Guyatt's Discount Night

This night proved to be a great success with many people receiving good discounts from Billy Guyatt's. Many people have commented on the night and have asked if there will be another night at any stage. Another night will be arranged for next year. Thank you to all who supported this night.

Suggestion for the Month

Congratulations to KARL DEBNEY, Security, who has won the suggestion from last issue. Karl has won a Swaggers Restaurant meal discount booklet.

His suggestion was for some discounts at places like Pizza Hut, Ribs-on-the Run etc.

After discussion with these places, a discount has been arranged, to be reviewed in a few months. These are as follows:

Pizza Hut -

Choice of free garlic bread, or
Two cans of any soft drink with any order
(arranged with manager, Gary McEldrew)

Ribs-on-the-Run -

Free chocolate mousse with any order
over \$15.00
(arranged with manager, Alex Sinclair)

These are to be reviewed after Christmas with the view to increasing these offers to our members. The more support given, the better the offers will become. This is the beginning of a new system for both these take-away places, so the offers are only until reviewed.

These offers are **only for Social Club** members and card must be presented beforehand. If ordering by phone, please ensure that you say you are a member of the Social Club, and have your card ready on delivery.

Phantom of the Opera

On the 14th. December 1991, the Social Club had its **eighth trip** to the Phantom of the Opera. Support has been wonderful. Thank you for all who participated.

Bowls

After the retirement of RON BOWEN, DAVE RICHARDS has taken over the role of conducting the Friday night bowls games.

The committee would like to thank Ron Bowen for his efforts in his work with the bowls, and also welcome and thank Dave for enabling us to continue. For any queries regarding bowls nights, please contact Dave, Environmental Services.

Picture Nights

There were thirteen picture nights run this year, with a total of 977 people attending.

Updates - Discount Book

The following businesses are to be added to your current book of members' discounts. Every year after the discount book is issued we have people still wanting to be entered into our discount book.

Please make note of the following discounts for your future use:

Dennis Stuart Auto Spares
5 Lyons Street North, Ballarat
Discount on application

Haydan Service Centre
1101 Sturt Street, Ballarat
10% of all services and repairs

Chandlers
Central Square, Ballarat
Discount on application

NB: All of the above offers are only valid on presentation of your Social Club Discount Card

WITH BEST WISHES FOR A SAFE AND MERRY CHRISTMAS AND A PROSPEROUS
NEW YEAR FROM ALL IN YOUR COMMITTEE.

CHRIS ORAM - CLERICAL RELIEVER

Chris Oram

DENNIS WAIGHT - LINEN STORES

Dennis Waight

HELEN ROBINSON - REDEVELOPMENT

Helen Robinson

NOLA MCCORMACK - WARD CLERK - DAYWARD

Nola McCormack

PAUL NANDLAL - PHARMACY

Paul Nandlal

COLIN WILSON - STORES

Colin Wilson

MARGARET BLACKSHAW - WARD ASSISTANT - Y1

M. Blackshaw

BARBARA MORRISON - OUTPATIENT RECEPTION

Barbara Morrison

JOAN CHEESMAN - CATERING

Joan Cheesman

NEVILL SMART - YARDMAN

Nevill Smart

JENNY FRASER - WARD CLERK

Jenny Fraser

HELEN HEALY - PAY OFFICE

Helen Healy

DON COLBERT - THEATRE

Don Colbert

CHRISTMAS CARNIVAL

Held 14th. November, 1991, 3.00 - 7.00 pm.
Updates will be brought to you in the next
Communicator.



A MERRY CHRISTMAS
AND A SAVE & HAPPY NEW YEAR
TO OUR FRIENDS & COLLEAGUES

from: REHAB STAFF

SOCIAL CLUB POOL COMPETITION

Another successful Pool Tournament has been completed, with the Finals Night being a good social night for all who attended.



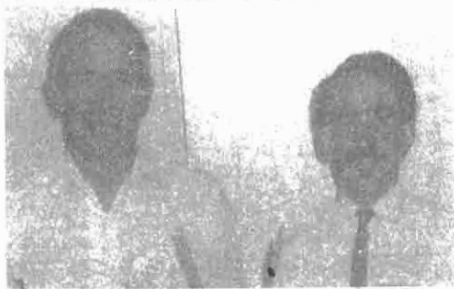
This year was the first running of a 'singles' event - looking for a BBH Champ.

The finalists were LEIGH CROSS and IAN LEISHMAN. After a close match, which could have gone either way, IAN LEISHMAN was the winner.

To top the night off, IAN LEISHMAN and DON COLBERT defeated BOB SMITH and GARY GREVILLE in the doubles final, which makes it a double victory for Ian. Well done, Ian!

Congratulations also go to all the other finalists, and many thanks to all the players who participated in the games and to those who attended our Grand Final Night making this a successful event for the BBH Social Club Inc.

WHO WILL BE THE 1992 CHAMP?



1991 Pool Finalists, (L-R)
Leigh Cross, Ian Leishman, Donald Colbert, Bob Smith
and Gary Greville.

CREDIT UNION NEWS

BALLARAT CREDIT UNION - BBH BRANCH NEWS

"Special Member" Competition

We celebrated our first year since the transfer to Ballarat Credit Union on 1st. October 1991. A "Special Member" Competition was won by WYNN ROGAN - large pizza, one video movie hire and a food hamper. Congratulations Wynn.

Suggestion Mailbox . . Win \$50

BBH Branch has had a succession of winners.

MICHELLE LAMONT - August 1991

After hours post box for BCU members-BBH Branch. When renovations take place a postal box will be made available.

MARLENE MONCK - September 1991

Parking a problem for BCU-BBH members. Two car parks are being looked into.

NORMA DERBYSHIRE - October 1991

Incentive for members to encourage non-members to join BCU-BBH Branch.

Enter your suggestion for the coming months and see if we can continue our winning run.

"Join a Friend"

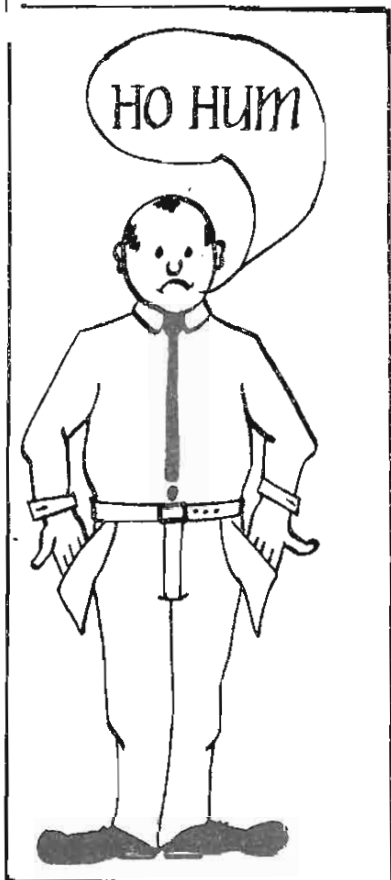
Are you a member of the Ballarat Credit Union? If you are a member and encourage a non-member to join the Ballarat Credit Union - Ballarat Base Hospital Branch with a payroll deduction you will be eligible to receive \$25 payable into your account.

CU-BBH New Employee Award - \$25

Congratulations! BETTY McGUINNESS on winning the \$25 New Employee of Ballarat Base Hospital award, compliments of the Ballarat Credit Union, BBH Branch.

THE BALLARAT CO-OPERATIVE CREDIT UNION
PROUDLY SPONSORS THE COMMUNICATOR

Join a friend.



Can you guess who had a
Christmas Club Account !!
with our
Community Credit Union?

MAURICE MOORE RUN

BASE RUNS THIRD

On Sunday, 8th. December, 1991, a team of sixteen runners competed in the annual Ballarat to Maryborough Maurice Moore Run.

The Run is held in the memory of the former Maryborough policeman who was shot and killed about six years ago.

Teams representing the Maryborough Police, Ambulance, Telecom, Hash House Harriers and Ballarat Base Hospital keenly contested the event with several brilliant performances.

Eventual winners were Hash. second went to Telecom with the Base a close third.

KEVIN DAVIES and DAVID BORYS once again put in brilliant performances, but the run of SUE HOLLIOAKE exemplified the true spirit of the run. Sue who had been ill all week volunteered to run due to a late withdrawal and completed her 4.2 km leg in 32 degree heat, exhausted. It was a great performance a great day and real team effort.

Thanks to all once again.



LORRAINE AND JEANETTE

EXTEND TO ALL BALLARAT BASE HOSPITAL
EMPLOYEES AND FAMILIES

A VERY MERRY CHRISTMAS AND
A SAFE AND PROSPEROUS NEW YEAR

BALLARAT BASE HOSPITAL BRANCH
BALLARAT CREDIT UNION



BALLARAT BASE HOSPITAL TEAM

1991 BALLARAT TO MARYBOROUGH MAURICE MOORE RUN

1st. Leg	ROB NICHOLLS	14.23	4.2 ks
2nd. Leg	TOM ROBERTS	15.55	4.2 ks
3rd. Leg	LIZ BUTLER	18.01	4.2 ks
4th. Leg	DAVID BORYS	13.28	4.2 ks
5th. Leg	ANTHONY BROOKS	15.16	4.2 ks
6th. Leg	ROSS PRIDDLE	14.39	4.2 ks
7th. Leg	DON McKENZIE	14.26	4.2 ks
8th. Leg	CHRIS RUDDICK	14.10	4.2 ks
9th. Leg	SEBASTIAN STEENHUIS	17.28	4.2 ks
10th. Leg	SIMONE DUNN	20.00	4.4 ks
11th. Leg	KEVIN DAVIES	13.25	4.2 ks
12th. Leg	SIMONE WEBB	21.26	4.2 ks
13th. Leg	IAN McPHAN	15.48	4.2 ks
14th. Leg	NEVILLE SMART	20.16	4.2 ks
15th. Leg	SUE HOLLIOAKE	21.35	4.2 ks
16th. Leg	GARY GREVILLE	11.57	3.1 ks

Total Time

4 hrs 22 mins 12 sec

NOISE AWARENESS

NOISE!

Sometimes we hear it and sometimes we don't!

Sometimes it bothers us and sometimes it doesn't!

Stop for thirty seconds and listen to what is happening around you. The disturbances are deafening.

In the Inpatient Satisfaction Survey conducted this year, almost **every** respondent commented on NOISE! Up to 25% of inpatients felt that it caused some disturbance.

Can we reduce this. Most of it is made by US - the workers.

Suggestions

Be aware ... don't yell if you can talk. We aren't all deaf.

Shut your door.

Does your telephone need to sound like the Town Hall bells?

Walk up to people to speak to them, don't call to the end of the corridor.

Consider your colleagues - and more importantly, your patients.

Be aware ... cut down on the noise!

"Noise" "unwanted sound" is an everyday nuisance which you may have deleterious effects on the well being and work performance of those exposed to it.

Hodge B. & Thompson J.F. (1990) "Noise Pollution in the Operating Theatre" 335. 891-894.

This article suggests that preferred speech limits were often exceeded, making communication difficult because of unnecessary background noise.

Sound can be regarded as noisy when it is unwanted or objectionable, interferes with work tasks, impairs verbal communication or prevents sleep.

Assessments of noise by people are subjective and therefore differ between individuals.

J. McMILLAN
QA CO-ORDINATOR (Nursing)

★ BLUEBERRIES ★

\$6 per kg

**Proceeds to
Community Aid Abroad
(tax deductible)**

**Leave your order with
Elaine in Pharmacy**

for delivery in Jan-Feb

Personality Answer: ANDREW MAYNE
 Engineers Department

ODD SPOT



Which speech pathologist (looking very pregnant) and whilst collecting the pool car keys, was heard to say, "I hope there's room in the car for me today!"

GOSSIP

Who's the new rooster amongst the chickens in the front office?

INPUT

The Communicator is produced every three months for the staff of our hospital.

Input by staff from **all** areas within the hospital would be most appreciated and should be addressed to - Gary Greville, Communications Department.



GARY GREVILLE
Production Manager



PETER LANE
Editor in Chief

Merry Christmas

and a

Happy New Year

to all

Staff

and their families