



BALLARAT BASE HOSPITAL

COMMUNICATOR

NO : 10 MAY - JUNE '89

FROM THE CEO'S DESK



DEMAND FOR HOSPITAL SERVICES

Staff will be well aware by now of the increasing publicity about the hospital's ability to meet the demands being placed upon it.

It is important for staff to understand how this demand has occurred and what steps the hospital is attempting to take to ease the pressure.

The principal factors affecting the type and level of demand at the Base, particularly over the last 2 to 5 years include:-

- (a) Changes in referral patterns, particularly for surgery, away from Regional District Hospitals to the Base. 13% of all admissions come from outside Region 2.
- (b) A major shift in demand from the private hospital sector (adjacent), to the Base as a result of the sharp downturn in health insurance status in the Community. The continued decline in private cover will aggravate matters further. This calls for strong recognition by both State and Federal Government.
- (c) The increasing incidence of urgent and emergency admissions, which now account for 42.5% of all cases treated. This has had a major impact on critical care and accident and emergency services.

- (d) The increasing demand for treatment associated with the larger aged population, eg: the demand for Orthopaedic Surgery.
- (e) Emerging patterns of care, eg: Oncology, which was predicted in the "Lovell Report" into cancer services.
- (f) Changes in Federal Government Policy, eg: pharmaceutical benefits, health insurance, which have directly and indirectly transferred patients away from Community or private care to the public sector.
- (g) Population increases generally.

Of the above list, the shift in demand arising from the reduction in health insurance cover throughout the community is particularly significant. In effect, this means, that patients who would have in the past traditionally gone to St. John of God Hospital, are now queuing up at the Base.

The increase in pressure on our Accident and Emergency services is also having the effect of squeezing available accommodation, which would have been used for elective admissions.

WHAT CAN BE DONE ABOUT THE SITUATION?

Rather than allow this situation to go unnoticed, the Hospital Board of Management, since December last year when the problems became very noticable, has sought to bring these issues to the notice of, not only the Health Department, but also to local Members of Parliament and the Minister. Significant submissions have been made to demonstrate the hospital's shortage of funds which prevent full utilisation of all our services. It is hoped that some additional funds will be made available for the financial year 1989/90, which will enable some expansion of accommodation to occur to enable us to halt the growth in the hospital's waiting list, which now stands at over 1,100 patients.

The hospital has drawn to the attention of the Federal Health Authorities, the need to re-look at the problems associated with the drift of the community away from Health Insurance. It is the hospital's view that steps should be taken to provide a greater incentive for people to ensure and thus take advantage of the available private facilities and thus reduce the demand on hospitals such as the Base.

Pending a budget adjustment and given that all existing allocations are committed to providing the present level of services, our options are particularly limited. Recently, we reopened closed beds in Y1 and Y2 and offsetting this by closing Ward EGE. Being a small ward the staff released from EGE was able to be used, not only in increasing the staff in Y1 and Y2, but also meeting shortages, particularly in night rosters. It is expected that, although we have not increased the bed availability as a result of this move, there will be a slight increase in the number of patients that will be accommodated as a result.

The Hospital Board is very concerned about the effect this demand blowout is having on patients and has determined that policies to cope with this will always ensure that all patients in need of immediate or urgent care will have priority.

Other steps being contemplated by the hospital are the utilisation of some bed facilities on a 5 day week basis, instead of 7 and also a re-look at the utilisation of day ward services.

The long term solution to this pressure is undoubtedly an early start to the hospital's redevelopment program.

REDEVELOPMENT PROGRAM

At the same time as the current pressures are being aired in the press, the future of the Hospital's Redevelopment Program is also making

headlines. The key issue is the amount of pressure building up as a result of the recent Commonwealth State Funding Agreements.

As far as the Board of Management of the hospital is concerned, the Government has made a firm commitment to the Redevelopment Program announcing this in very positive statements on the 27th April, 1988 through the then Minister of Health, the Honorable David White, M.L.C.

The pressures the hospital is facing now and will face in the future have been constantly put in front of the Minister, who will be visiting the hospital on Tuesday, 13th June, 1988. It is hoped that the Minister at this visit will be able to reaffirm the commitment to the Base Hospital and enable the contract to be let.

E.D. MACAULAY

Chief Executive Officer

ODD SPOT

PAULINE ROENFELDT'S (Occ. Therapy) car recently celebrated its first birthday. Pauline baked a cake. Unfortunately for Pauline, when she went to book a hospital car for her rounds, she was unable to. All the hospital cars had gone to the birthday party.

* THUMBS UP *

for the CAFETERIA in the great variety of food choice we have at present.

SOCIAL CLUB



Richard Roper (left) and Shaun Murphy (right) are all smiles after winning the BBH Social Club Pool Championship. Smart judges had them at 500 - 1 at the start of the tournament. In a close five game match, Shaun made up for a couple of nervous twitches by playing a superb shot to double the black and win the match. Richard Roper was as cool as a cucumber and was as solid as Ayres Rock! WELL DONE CHAMPS!



Social Club Treasurer, Chris Oram (left), presents (l to r) Cathy Duncan (YG), Val Livitsanis (QG) and Bruce Young (Q1) each with a \$100.00 cheque from the Social Club, for the purchase of hospital equipment.

GENERAL SERVICES



Accreditation

The recommendations contained in the accreditation survey report have now been considered by the Divisional Heads. Many of the recommendations have already been implemented and others will be further discussed by the Executive in the near future.

Health Service Agreement

A working party has been meeting to consider the hospitals position with regard to the Health Service Agreement for the 1989/90 financial year. Clarification is being sought from the Health Department as to the level of operating funds that will be available to the hospital in the next financial year as this decision greatly influences the services to be provided.

Foundation

The intensive phase of the gifting program is now well under way. Foundation committee members are busy with their visiting program to potential donors. The council is now looking towards corporate and trust donations to further support the foundation program. The current pledges and gifts as at the date of this report amount to \$116,725.

Minor Works Budget

The executive staff have determined minor works priorities for the \$125,000 minor works allocation that has been provided through the regional office. Departments will soon be advised of the priority listings.

Regional Superannuation Office

The Regional Superannuation Office Board was officially opened on Friday 2nd June. The office is situated on the first floor of Jessie Langham House and any superannuation queries should be directed to Mr. Phil Davis who is the local superannuation adviser.

J.R. BRIDGER
DIRECTOR OF GENERAL SERVICES



Young Clinton Harris, aged 5 enjoys a ride on the rocking horse.

The Rocking Horse, in the Children's Ward, has been renovated and restored to its former glory, directly due to the support received in a recent "special effort".

Thanks, to all who donated.

Staff,
Children's Ward.

B. B. H. FOUNDATION LAUNCHED



On Wednesday, 3rd. May 1989, the Ballarat Base Hospital Foundation Limited, was officially launched with a dinner at the Balanada Room.

The evening was a tremendous success, with many members of the Ballarat community attending. Diners were entertained by political impersonator, Paul Jennings and the Ballarat and Clarendon College Swing Band.

The Foundation, incorporated under the companies code, has as its objectives, to:

- support the Hospital's Board of Management by fostering financial assistance for the continued development and improvement of hospital services and facilities.
- invite the community to participate in the Hospital's future.
- encourage the making of gifts, including bequests, for the benefit of the Hospital.

The Foundation is run by a Council made up of thirteen dedicated members from the Ballarat community and the Hospital's Board of Management.

They are - Mr. David Karmouche, Chairman
Mr. Frank Whitfield, Vice-Chairman
Mr. Jamie Gear, Vice-Chairman
Mr. John Armstrong
Mr. Bruce Bartrop
Mr. Wallace Cochran
(also member of Board of Management)
Mr. Merv Collins
Mr. Doug Cowles
Mrs. Patricia Fisken
(member of Board of Management)
Mr. Peter Heinz, Jnr.
Mr. John Vernon
(member of Board of Management)
Mrs. Emma House.

The Hospital's needs are great and our costs rise year by year. By involving the community, that is, encouraging them to give to the Foundation, they are in effect, supporting their hospital and contributing to its continued development.

People are being encouraged to give over a five year period, donations of \$500, or more.

However, ALL DONATIONS ARE WELCOME. After all, the objective is to build the fund to \$10 million by the year 2,000, so that the interest from this amount will provide for the inevitable demand for equipment, facilities and services.

You may wish to participate in this exciting venture.

Our Hospital is a leader in the field of Health Care. Supporting it through the Foundation will ensure that our Hospital remains a leader as we enter the next century.

Should you wish to give, arrangements can be made for payroll deductions.

Remember, all donations over \$2 00 are fully tax deductible.

You can either contact myself (extension 534) for further information, or complete the form on the page opposite.

P.D. LANE,
Foundation Executive Officer



Mr. David Karmousche is our Hospital Foundation Chairman. David was an employee of our hospital about 30 years ago and semi retired. David runs the John Curtain Memorial Hostel at Creswick on a part time basis. David has an absolute commitment to the Hospital Foundation and would like to see staff from our hospital become involved.

FOUNDATION DONATION FORM

Yes, I wish to give to the Foundation

Name

Address

. Postcode

My donation will be paid as follows

1. One payment enclosed \$

2. By subscription (up to 5 years for donations
of \$500 or more)

Yearly total \$ No of years

Please send me an annual reminder

3. By subscription through Payroll deduction of
\$ per pay. For months/years

4. Yes, I will give to the Foundation, but wish to
discuss details with a member of the Foundation
Council.

Signed: Date:

REMEMBER: ALL DONATIONS OVER \$2.00 ARE TAX
DEDUCTIBLE

Please send this form to:

The Executive Officer,
Ballarat Base Hospital Foundation Limited,
Foundation Office,
Queen Victoria Block (Q1)

or post to:

P.O. Box 577
Ballarat, 3350

NOTES FROM THE ENGINEER'S DESK

What an Awful Waste!

This Hospital, among many other businesses in Ballarat, was rudely jolted by a direction from the EPA during the last week of May, that we will not be able to dispose of our kitchen grease trap residues into the tip, as we have done in the past. Further, they are tightening up their standards for disposal of infectious waste and burning of plastic through our incinerator.



What can this Hospital do to solve these new problems we are confronted with? This is the question posed to this friendly, but frustrated hospital engineer.

Now, I am not a "Greenie", or even a "fanatical conservationist", but it seems quite appropriate to stop and question the whole mess our "high" standard of living has got us into in the last two decades - particularly as this is written during the week commencing with World Environment Day (5th. June, 1989).

Our "disposable" society has created a monster that is threatening to change the world to the probable detriment of future generations. Probably nowhere else is the use of "disposables" greater than in a hospital - most of this involves plastic materials - which are disposed of by burning. This adds CO₂ to the atmosphere (and some other toxic gases as well). Of course, CO₂ is absorbed by plants and trees to keep an environmental balance, but then humans go and cut down forests to provide (amongst other things) paper. Do you know how much paper this Hospital uses in a year? We use over 5 tonnes of photocopy paper each year and as much again of computer paper. And how do we dispose of it? Burn it, or send it to the tip.

Our tip is becoming full and most of us know of the debate that has been going on in the community about a new tip site - we all know one is needed, but no one wants to have it near them. What happens in the future when no

more land fill sites are available? It seems most ironical that our Councils, just a few years ago, encouraged us (some even compelled us) to use the "big bins". As I see it, this has made us even more casual with our attitude to waste disposal - just put it all in the big bin.

The first step, we as a hospital, and every person as an individual, must do, is to take recycling of waste as a serious and practical alternative. Ballarat has the good fortune to have a Commercial enterprise which will collect our bottles, papers and now plastics (except expanded polyurethane foam and PVC). We as consumers must segregate the waste products at the source, so that they may be collected for recycling. This could mean up to seven waste receptacles at the collection point in each ward (two more than we now have), but it will be necessary. There are: glass/bottles; cans; plastic packaging materials; newspapers/magazines/paper; sharps syringes; infections; other. Only the last three would then be incinerated. The cans would go to land fill and the remainder would be recycled.

This would reduce the load on the incinerator greatly and reduce the total waste load on future generations even more.

Please think about it, then act on it.

LEIGH D. GRIGG,
Chief Engineer

PERSONALITY OF THE MONTH

Age:	36
Years of Service:	10
Height:	5'10"
Build:	About half up and half down
Sex:	No worries now
Likes:	Keeping out of boss's way; Toasted sandwiches
Dislikes:	Apprentice Fitters; farming
Favourite Saying:	"Yeh, No, No, No, Consider it done"
Department:	Engineers
Name:	Somewhere else



The Engineers have been working SO hard lately (Leigh Grigg says), that they fall asleep whilst on the telephone. They really look stuffed!

SISTER HOSPITAL

During the last 2 years, the Base has hosted 3 visits by health officials from Jiangsu Province in China, as part of the Sister State program sponsored by the Government of Victoria and the Peoples Republic of China.

These visits have lead to the Board of Management of the Base formally agreeing to establish a Sister Hospital relationship with Suzhou No. 2 Hospital (500 beds, in Jiangsu Province). The city of Suzhou is located west of Shanghai.

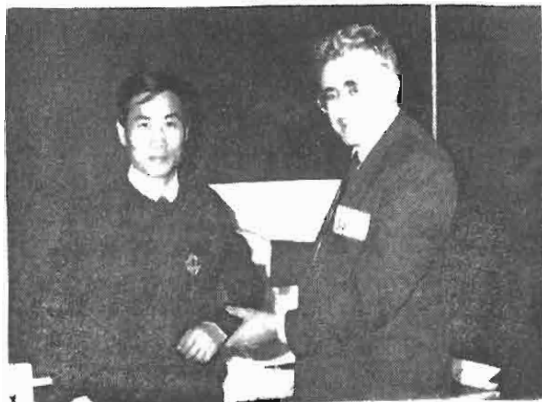
As part of the formal process of negotiations leading towards an agreement between the 2 hospitals, Dr. Yu Kangmin, Chief Executive of Suzhou No. 2 Hospital visited Ballarat Base from 6th to 15th May. The purpose of the visit was to discuss the form of various departments, which may be involved in the exchange of personnel between the 2 hospitals.

Initially, the relationship between Suzhou No. 2 and the Base will take the form of the provision of technical assistance in a number of scientific and related disciplines. The first of the technical visits commencing probably in the latter part of 1990.

An itinerary was arranged for Dr. Yu to cover his stay in Ballarat and this involved a visit to most areas and departments of the hospital.

Dr. Yu also addressed a staff information meeting which was held in Function Rooms, 2, 3 and 4 on Thursday, 11th May, 1989.

DR. YU VISITS



Dr. Yu proudly displays a BBH jumper.
One of several gifts given him during
his brief stay.



Dr. Yu looks at the BBH Annual Report with
John Bridger, Director of General Services.

REDEVELOPMENT PROJECT

After what appears like a very long time, the process of reducing the Hutton-Jones/McDonald Wing to ground level, has now been achieved.

Many enquiries were received as to the availability of second-hand bricks, tiles etc. and all were referred to the demolition contractor.

It would be interesting to know just how far and wide some of the recycled material will travel before it finally reaches its new surrounds.

A photographic record has been kept for archive purposes, for the future generations to gaze upon buildings long gone into history.

Mentioning future generations reminds one of how vital it is to keep in our minds, that we are planning and building - not just for ourselves - but for the future generations.

So many times one hears - "but what does it matter, I won't be here to use it (the hospital) when it is finished".

Of course, many of us here now will not be here to use the new facilities, but that should not prevent progress, should it?

All future planning would grind to a halt if we accepted that theme.

Buildings would never be built, achievements would never reach fruition. Let us all think and act as a TEAM to make the Ballarat Base an outstanding achievement.

It takes more than just mortar, bricks and high technology equipment - it needs people who do care about our image, our future - and above all, a safe and caring environment for patients and staff alike.

As we go to press, we are still at the nail-biting stage of awaiting THE announcement of the "go ahead" from tendering stage.

What rejoicing when it is all systems go!!

The project team have been "wading" through the 450 page contract specification document, checking and rechecking details.

The established furnishings and equipment lists have been entered onto a computer data-base inventory, a time consuming task, but an invaluable record for use throughout many stages of the project.

Our Engineering Department has been busy developing the mock-up of a typical 4 bed, 1 bed unit, a typical bathroom for Yuille House refurbishment and a Critical Care Services Pendant.

These mock-ups will assist our staff to actually visualise the planning concepts.

Furniture: i.e. trolley beds, have also been obtained (for trial in the mock-ups), from various manufacturers. A high priority is to have all 292 beds in the redevelopment, with high-low mechanisms.

As soon as the mock-ups are finalised, staff from varied roles will be asked to view and give their opinions on the structures.

Keeping the future in mind, here's to thinking positively to the first opening of our new development, in 1991!

Helen Robinson & Bill Wallace
Project Team



HAPPY BIRTHDAY



Young Tommy Higham has actually come of age.

Tom was all smiles as he celebrated his 21st. birthday in the Cafeteria, at a surprise birthday party, which was organised by staff and friends in the domestic services.

Many of the staff chipped in by baking cakes. They presented "Tomcat" with a L-A-R-G-E 21st. Birthday Card signed by all.

HAPPY BIRTHDAY TOM!!

COMPETITION - WHO IS IT?



HEATHER JOHNSTON
(Annex Hospital's Clerk)

was our cheeky "Cute Kid". It was great to see plenty of interest in this competition - but NO correct entries were submitted, so the prize of a \$20.00 counter meal for two at the Foundry Hotel, will jackpot to \$40.00 for our next lucky winner.

.....

If you think you know this "Cute Kid" who is currently working at our hospital, write the name, together with yours, on paper and send it to:- Gary Greville, General Administration. The winner will receive a \$40.00 counter meal at the Foundry Hotel, compliments of the BBH Social Club.

SO, BE IN IT TO WIN IT -

Clues: Always in overdrive
Grew much taller than this photo
Built for speed!!!
Sits in the garden, late at night,
selling Jean Pierre Sand imported French
perfume.

**NO
WINNER
- JACKPOT !**

BALLARAT BASE FIRST REGIONAL OFFICE FOR H.S.B.

The Hospitals Superannuation Board opened its first regional office in Ballarat Base Hospital from June 5, 1989. This "Information Centre" will service the 5,500 health sector employees in Ballarat and the surrounding area.

Each one of these employees receives the non-contributory Basic Benefit as part of their employment package. This benefit is financed completely by their employing health care institution. It offers a lump sum superannuation payment on retirement from age 55, as well as death and disability insurance. The Board manages this benefit on behalf of its members.

Some 30% of these employees also contribute a portion of their own salary to the contributory superannuation scheme offered by the Board. The Centre allows for easy access to information and guidance for all of these Fund members.

"The opening of this Ballarat Information Centre is a major commitment by the Board to continue providing the best level of service for our members", said Mr. Harold Hopkins, President of the Hospitals Superannuation Board.

"As a pilot project, this Centre's success is an important factor that will determine the Board's further decentralisation throughout Victoria. We are certainly encouraged by the support of our membership and their employing institutions in Ballarat and surrounding districts."

The Centre is located in Suites 16 and 17 of the Jessie Langham House at Ballarat Base Hospital. It will be managed by two employees of the Board. Phil Davis, HSB's superannuation adviser, and Dianne Shillitoe support officer will be based in the centre on a full-time basis.

Telephone Phil or Dianne on (053) 33 4877.



The Mayoress of Ballarat, Wanda Chapman, officially opens the Hospital's Supernatation Board Office, located on the 1st. floor of Jessie Langham House.

INTEREST RATES

BALLARAT BASE & ASSOCIATED HOSPITALS

CREDIT CO-OP LTD.

The Annual Meeting of the Co-op will be held in Function Room 1, on June 21st. at 1.00 pm.

Interest Rates - Effective from 11th. May, 1989

<u>Savings</u>	- On Call	10% pa
	- Fixed Deposit (6 months term)	16% pa (\$500 min.)
	- Christmas Club	10% pa
	- Fixed Deposit (12 months term)	13% pa (\$500 min.)
	- Short Term (2 months max.)	10% (\$2,000 min. transaction. Daily interest.)
<u>Loans</u>	- Maximum Loan after 1 year membership	\$10,000
	up to 1 year membership	\$5,000
	- Interest on Loans	1.42% pm (17% pa)

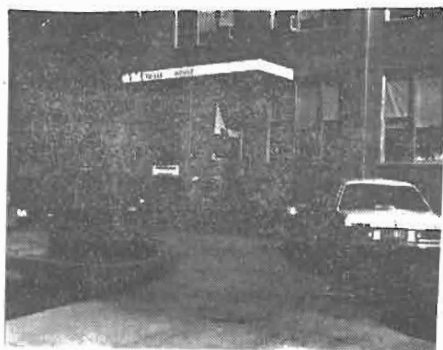
Members wishing to borrow must have an established savings pattern. The Co-op has a limited amount of money that can be lent out each month and first priority will be members who save with the Co-op. Members without an established savings pattern will find that their loan is deferred. The Co-op can only lend out money if members save with the Co-op.

Presently, the Co-op pays all bank and government charges for members. It is becoming increasingly costly for the Co-op to provide this service when some members use the service simply to deposit money and immediately draw cheques and only keep a small balance in their account.

If this practice continues, it may be necessary to charge those members for cheques and bank charges if they do not maintain a balance in their account.

Save with the Co-op, so that you can receive the benefits of the Co-op.

L.M. GEORGE,
Treasurer



The semi circle in front of Yuille House (Pictured) is now officially a Doctors Emergency Car Park with the exception of one parking bay for the Kiosk Manager. Staff are no longer permitted to park in this area.

ROD BEAUMONT.

Rod has been appointed to the position of Personnel Manager. For the past 5 years he has been working in the Finance area as Assistant Accountant. So, if you want a pay rise or a new job, go and see Rod!



JOY ROBSON.

Joy is our new Assistant Accountant. This position entails maintaining the inpatient debtors accounts and associated reporting. Before moving to Ballarat five years ago, Joy held various positions with accountants in Melbourne. Good luck in your new position Joy.



GARY VAGG.

Gary was previously employed at Messer & Opie for the past thirteen years as department manager. Gary is now working in the stores department as a storeman & we wish him well in his new position.



HOSPITAL CHRISTIAN FELLOWSHIP

FAITH is the eye by which we look to Jesus. A dim-sighted eye is still an eye; a weeping eye is still an eye.

FAITH is the hand with which we lay hold of Jesus. A trembling hand is still a hand. And he is a believer whose heart within him trembles when he touches the hem of the Saviour's garment, that he may be healed.

FAITH is the tongue by which we taste how good the Lord is. A feverish tongue is nevertheless a tongue. And then we may believe, when we are without the smallest portion of comfort; for our faith is founded, not upon feelings but upon the promises of God.

FAITH is the foot by which we go to Jesus. A lame foot is still a foot. He who comes slowly nevertheless comes.

George Mueller .

George Mueller was a man of tremendous faith.

Many years ago, he ran an orphanage on a street in London when times were tough for most people.

Sometimes, he ran out of food for the children, and he would tell no one except God. Everytime, he saw people turn up just at the time that food was needed, with food.

God had answered his prayer of faith.

George Mueller in turn, extends the invitation to others, like ourselves, to come to Jesus Christ, no matter what our need maybe, spiritual, health or practical.

No matter how strong or weak our faith is, if we put that faith in Jesus Christ, we will see lasting and even eternal results.

He is all powerful.

CENTRAL HIGHLANDS LINEN SERVICE

The Central Highlands Linen Service situated corner Lonsdale and Sutton Streets, Ballarat celebrated their 10th Anniversary on 5th April, 1989.

Hospitals in the Central Highlands Region each struggled to meet linen and laundry facilities from small and inadequate buildings. Machinery and equipment that was old required constant maintenance, while handling systems and procedures meant low productivity, thus costly to the individual organization.

The Health Department Victoria after years of planning and negotiations by the Queen Elizabeth Geriatric Centre signed contracts in 1977 for documentations for the construction of a New Linen Laundry Service for the Central Highlands Regions. This new complex was commissioned on the 5th April, 1979. An independent operation with its own boiler house and their services have proved to an outstanding success. There were nine participants at the Commencement of the Service, today in 1989 there are twenty-nine.

The Ballarat Base Hospital was well represented on the initial Committee to ensure that the continuance of the past efficient standards and quality of the linen laundry services were maintained.

The Ballarat Base Hospital Laundry Staff were invited to accept and to transfer to the new complex. **Mrs. Lorna Rickard** and **Mrs. Kaine** (widow of the last Base Hospital Laundry Manager) are on the staff of the Central Highlands Linen Services, enjoying the pleasant congenial surroundings and staff amenities.

Mrs Colin Caine remained as the Hospital Supervisor until his death of July 1984, the position he held for 12 years. Miss Helen Van Hees who successfully succeeded Mrs. Kaine as the present supervisor.

The present hospital staff consists of **Dennis Waight**, **George McIntosh** and **David Taylor** and **Mrs Elva Harwood** of the Sewing Room who succeeded **Mrs Kathleen Maloney** who had served in various positions for 29 years and presently relieves Mrs. Harwood.

Facts and Figures

Production 1987/88

Kg per annum	2,312,173
Kg per week	44,464
Kg per hour	1,170 (This equals 230 domestic washer loads or 4,100 items per hour.

Employee Numbers - 46 full time staff.

Fixed Assets and Stock - \$6,060,000.

Linen Schedule - 108 Standard items, plus staff apparel and patients clothing.

Linen Charges -

Standard Linen - \$0.827 cents per kg.

Special Linen (clothing & uniforms - \$1.241 cents per kg.

Theatre Linen - 0.992 cents per kg.

Future plans for the extension of the Central Highlands Linen Service are planned to improve the receival area of the soiled linen and a computer operated for the material handling of equipment.

The staff of the Ballarat Base Hospital are proud to be a member of the Central Highlands Linen Service and extend congratulations to the members of the Board of Management of the Queen Elizabeth Geriatric Centre and the staff at the Laundry Complex and Ballarat Base Hospital Linen Services Department.

- BBH TRAINED NURSES LEAGUE -

Invites members to attend meetings for 1989, held in Baxter Lounge, Langham House at 8.00 pm on

4th. July, 1st. August, 5th. September and
3rd. October.

Interesting Guest Speakers , followed by homemade suppers.

REUNION 1989 - Saturday, 4th. November

Annual Meeting and Afternoon Tea -
Function Rooms 2 and 3.

Dinner -
Sovereign City Receptions
314 Drummond Street South, Ballarat.

Schools 1949 - 1951, 1966 - 1969 are planning to return.

...

If you are a BBH Trainee and have not paid your Life Membership, join next payday. \$5.00.
Any member of the League can nominate you.

...

Molly Flynn
Hon. Secretary
1801 Sturt Street
Ballarat, 3350
ph: 34 1441

SMILE AWARD

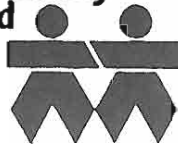


The SMILE OF THE MONTH AWARD, this month goes to

DR. STEVEN WALKER

Winners of this award receive a box of chocolates compliments of the Social Club.

**Ballarat
District
Community
Fund**



TOTAL AMOUNT DISTRIBUTED TO
THE BALLARAT HUMAN CARE AGENCIES
FOR THEIR COMMUNITY WORK
BY THE COMMUNITY FUND

Lisa Lodge	\$3,400
Ballarat Children's Homes	10,900
Uniting Church Outreach Centre	7,900
Epilepsy Foundation	1,000
Better Hearing Australia, Ballarat	550
CHIRRA	500
Inter Agency Respite Care	550
Big Brother/Big Sister Programme	2,800
Lifeline, Ballarat	2,800
Kids Community Centre	500
Riding for the Disabled	200
Parkinson's Disease Association	250
Compassionate Friends	378
Marriage Guidance Council	550
Citizens Advice Bureau	200
	<hr/>
	\$32,478
	<hr/>

THANKS TO THE MANY HUNDREDS OF INDIVIDUALS
WHO HAVE MADE PLEDGES TO ASSIST THE ABOVE
HUMAN CARE AGENCIES.



Belinda Adams (standing) instructs staff on word processing. Approx twenty staff attended the course, with several males appearing very keen and Michael Rhook being thrown out!

DID YOU KNOW?

Research by HELEN ROBINSON into her family tree has shown that Helen is related to FRANK GRAY ... Every tree has a dead branch!

MICHAEL RHOOK has started up a petition to outlaw petitions!

Any truth in the rumour that BARRY BOLGER (football umpire), replied to a footballer who accused him of missing a decision, "Sorry, my hair blew into my eyes".

FOR SALE

18 months old, long hair GERMAN SHEPHERD
Friendly temperament and experienced with kids

FREE to good home

Contact Shaun Murphy on 30 1213

1988 MAGNA EXECUTIVE....Automatic, Pwr.Steering,
Air Conditioning, just run in (13,000 Kms),
Many other extras...only 8 months old, GENUINE
URGENT SALE.....BEST OFFER!!! Ph. 316395.

REALTONE GRAMAPHONE
Cabinet style. V.G.C.

\$400 or nearest offer

phone Christine Hevey
32 4456

BBH Centenary Spoons	\$3.00 ea.
BBH Badges for Nurses' Capes	\$5.00 ea.
Booklet "Aim in View"	\$3.00 ea.

. Available from FRONT OFFICE ACCOUNTS

FDTH/Head
PCR



76 Old Vornandyle Rd
Donvale 3111
25-4-89

ATT The Ballarat Base Hospital

Dear Sirs

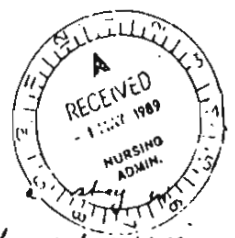
I recently spent three weeks in your Hospital the result of a motor car accident on the 18-3-89

I would sincerely like to express my gratitude to you for the excellent care and attention I received from all members of your staff during my stay in your Hospital

The most outstanding feature that I noticed was the warm friendliness of your staff. I must admit that I doubted if corresponding staff in the large Melbourne Hospitals would be quite as friendly.

I would like to single out for special thanks the Nursing staff in intensive care, where I spent about 1 week and the staff on Y2 who was terrific.

I would also like to thank my principal Surgeons Mr Nelson and Mr Mitchell who operated on three occasions one of which was under extreme emergency conditions over the Easter period.



It goes without saying that a Hospital is not a particularly pleasant experience. But in my case found that my stay in your Hospital more tolerable with the help of your dedicated staff.

Yours Faithfully

B. Martin

ANSWER TO;

Personality of the Month -

-- Jan Collins- Plumber.

GOSSIP

Who enjoyed the conference the most
in Adelaide, the MRA or FINANCE MANAGER

INPUT

"The Communicator" is produced every two
months for the staff at our Hospital.
Input by staff from ALL areas within the
Hospital, would be most appreciated and
should be addressed to:

Gary Greville,
General Administration

Thanks also to Jenny Buchanan for her
help in typing this Communicator.



GARY GREVILLE
PRODUCTION MANAGER



PETER LANE
EDITOR IN CHIEF