

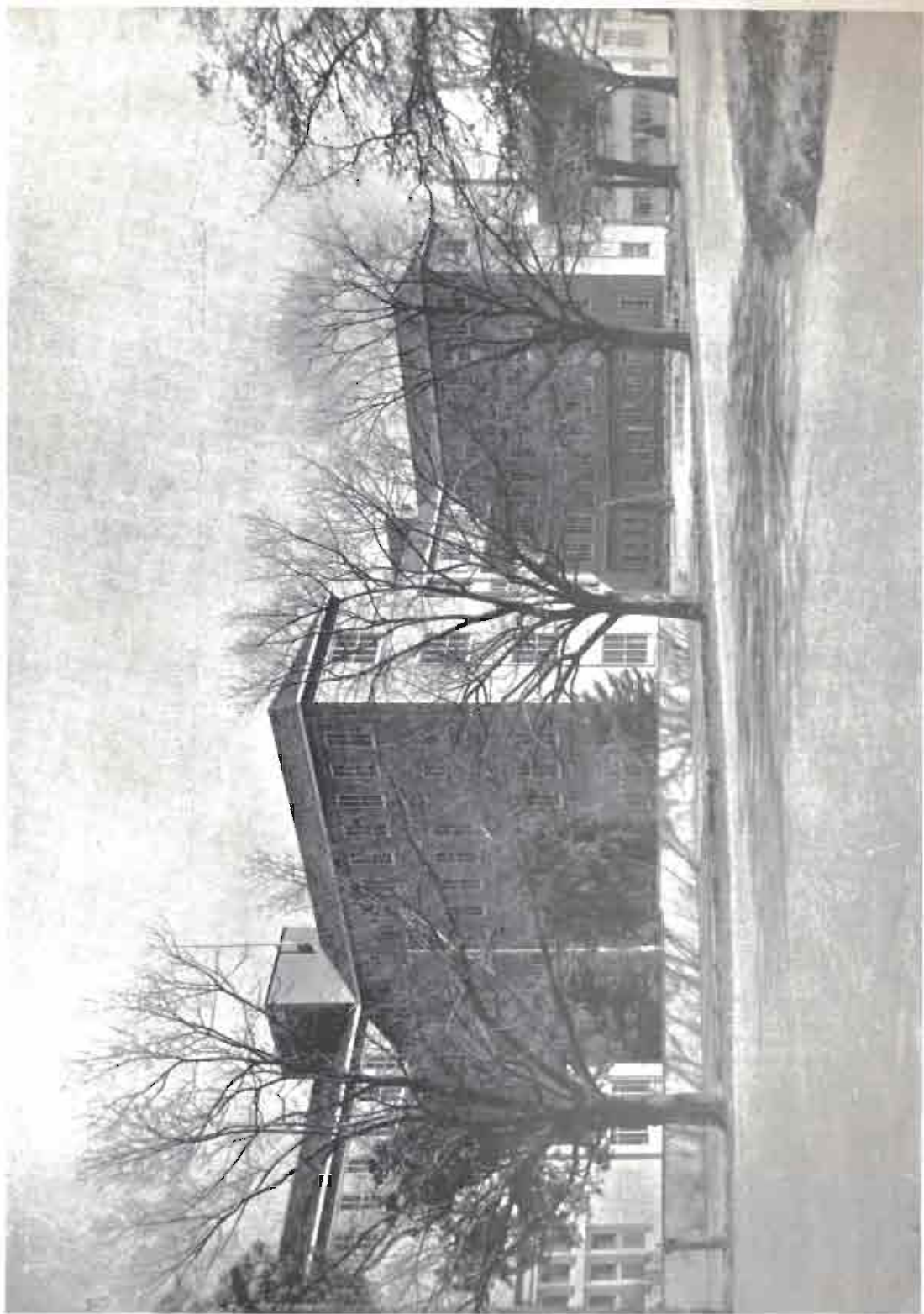
The  
Queen Elizabeth  
Benevolent Home  
Ballarat

Annual  
Report

AR.  
362.2  
QUE

1948

1949



THE QUEEN ELIZABETH BENEVOLENT HOME.

THE QUEEN ELIZABETH BENEVOLENT HOME  
102 ASCOT STREET SOUTH, BALLARAT.

P.O. BOX 199.

Telephone 11.

---

OFFICE-BEARERS FOR THE YEAR 1949-50.

President : G. B. CUTTER, Esq.

Vice-Presidents :

F. J. HURREN, Esq.                      L. F. NORTH, Esq.

Hon. Treasurer : L. LEDERMAN, Esq.

Board of Management :

ARTHUR W. NICHOLSON, Esq.	A. C. FRASER, Esq.
K. S. B. ARCHER, Esq.	J. KEITH, Esq.
D. BARNES, Esq.	E. N. KENT, Esq.
F. T. DAVIES, Esq.,	G. B. LAWRY, Esq.
C. N. EYRES, Esq.	Hon. A. J. PITTARD, C.B.E.

J. J. SMAIL, Esq.

Sub-Committees :

Executive : PRESIDENT, HON. TREASURER, Messrs. F. J. HURREN, E. N. KENT, G. B. LAWRY,  
ARTHUR W. NICHOLSON and L. F. NORTH.

Finance : PRESIDENT, HON. TREASURER, Messrs. K. S. B. ARCHER, F. J. HURREN,  
G. B. LAWRY, ARTHUR W. NICHOLSON and L. F. NORTH.

Building : PRESIDENT, HON. TREASURER, Messrs. F. T. DAVIES, C. N. EYRES, F. J. HURREN,  
E. N. KENT, G. B. LAWRY, ARTHUR W. NICHOLSON, L. F. NORTH and  
J. J. SMAIL.

\*Public Relations: Messrs D. BARNES, A. C. FRASER, F. J. HURREN, ARTHUR W. NICHOLSON,  
and L. F. NORTH.

\*Gardens : Messrs. F. T. DAVIES, C. N. EYRES, F. J. HURREN, J. KEITH and L. F. NORTH.

\*Bowling Green : Messrs. F. J. HURREN, G. B. LAWRY and ARTHUR W. NICHOLSON.

\*The President and Hon. Treasurer are ex-officio members of these Committees.

---

STAFF.

Manager : KEITH MACKAY, F.H.A., F.I.H.S.

Medical Officer :

Dr. M. H. B. ROBINSON, M.B., B.S. F.R.C.S. (Eng.), F.R.A.C.S.

Accountant : CLIFTON C. FITZGERALD, A.I.C.A., F.C.I.S., V.I.H.S.

Matron : Miss G. MANDEVILLE HALLS, S.R.N.

Sub-Matron : Miss M. ZACHARIAH, S.R.N.

Dispenser : J. L. RUSSELL, Ph.C.

Collector : C. A. YOUNG.

Auditors : W. A. AIKINS, A.C.A. (Aust.) and G. A. GILLBERT, A.C.A. (Aust.)

Hon. Architects : P. S. and G. S. RICHARDS, A.R.A.I.A., Ballarat.

Hon. Physicians and Surgeons :

G. T. JAMES, B.A., M.D., B.S.

WM. SLOSS, M.B., et Ch.B., F.R.C.S. (Edin.), F.R.A.C.S.

W. A. SPRING, M.B., B.S.

Hon. Dentists : T. P. WILSON and Dr. S. A. WILSON.

Hon. Optometrists : WASTELL & CUTTER.

Hon. Solicitors : CUTHBERT, MORROW, MUST & SHAW.

Hon. Consulting Engineers : W. J. and A. W. MEINHARDT, Ballarat.



THE NINETY-SECOND ANNUAL REPORT  
OF THE  
BOARD OF MANAGEMENT  
FOR THE PERIOD 1st JULY, 1948, TO 30th JUNE, 1949.

TO OUR CONTRIBUTORS.

Ladies and Gentlemen,—

Your Board has pleasure in presenting its Ninety-Second Annual Report on the progress and achievements of the Home for the twelve months ended 30th June, 1949, and the audited statements of accounts for the period 1st July, 1948, to 31st March, 1949.

A REVIEW OF THE YEAR'S WORK.

**PATIENTS :** The following statistical information will provide a clear picture of the valuable community service provided by this Home. Although the planned capacity of the Home is 500, beds have been added from time to time for extremely urgent cases, with the result that there have been occasions when 589 patients were in residence.

STATISTICAL :	Males	Females	Total
Number remaining in the Home, 1st July, 1948	283	288	571
Admitted during 9 months ended Mar. 31, '49	143	73	216
Discharged during 9 months ended Mar. 31, '49	101	34	135
Died during 9 months ended Mar. 31, '49	40	35	75
Number in residence at March 31, 1949	285	292	577
Daily average of Inmates	288.207	285.665	573.872
Daily average of Inmates (Infirmary)	177.190	223.065	400.255

Your Board has always been keenly conscious of its responsibility towards the aged, infirm and chronic sick, and whenever and wherever possible extra comforts and amenities have been provided. The proceeds of the 1944 and 1947 Special Appeals have enabled the Board to add those extra furnishings and equipment which has given this Home an atmosphere of happiness, comfort and kindly service.

**BUILDINGS AND GROUNDS :** Your Board has continued its policy of maintaining your valuable buildings, plant and equipment in first-class order, and the maintenance staff has also been able to make several minor alterations and additions so that room could be made for a few extra beds. The gardens and grounds, including the bowling green and its immediate surroundings, have been well kept and some beautiful displays of flowers have been produced.

**DEVELOPMENT :** In a report such as this there is a tendency to look back over the year's work and derive a great deal of satisfaction from the achievements of

that period. There can be no complacency, however, whilst the bed shortage is so acute that hundreds of bed-ridden chronic sick folk are unable to obtain admission to suitable institutions. Your Board is firmly convinced that its overtures to the Charities Board and later renewed with the Hospitals and Charities Commission for permission to add a new 250 bed wing is a sound, economical and practical solution of the problem of this particular district. For some months past applications are being received at the rate of nine a week while the average intake is only three weekly. Your Board has a long-range developmental plan which includes the erection of new workshops, patients' baggage stores, bulk store, sewing room, sun room for ambulatory old ladies, additions to staff quarters and re-arrangement of the administrative quarters to provide extra office accommodation, and a more comfortable and convenient waiting room for visitors.

Extra accommodation for patients must take precedence over all these very necessary works. Your Board has pleasure in reporting that possibly the first step in this long-range but vitally urgent programme has been taken in the letting of a Contract to the Lewis Construction Co. Pty. Ltd. for additions to the Staff Quarters at a cost of £21,760. The site has been cleared ready for an immediate commencement.

The Kiosk has developed far beyond expectations and, in order to save the old folk any discomfort whilst waiting for attention, your Board is now extending the Kiosk to provide for better service with a spacious cafe, where hot and cold drinks and light refreshments may be enjoyed and sundry purchases made in comfort.

**INTER-COMMUNICATION SYSTEM :** Your Board is pleased to report that an order has been placed for the installation of a 28 Unit Dictagraph Inter-communication system. The lack of an efficient inter-communication system has been a constant embarrassment to your Executive Officers.

The Hospitals Commission has promised generous assistance towards the cost and it is expected that the installation will be completed by January, 1950.

**GROUP LAUNDRY :** Following upon a conference between the Chairman, Mr. C. L. McVilly, and Commissioner Frencham of the Hospitals and Charities Commission and representatives of this Board, the establishment of a Group Laundry at The Queen Elizabeth Benevolent Home has been agreed to. This laundry will handle the wash of the Ballarat Base Hospital and The Queen Elizabeth Benevolent Home and probably that of some of the Hospitals in the district. Your Board will be the managing body of the Group Laundry, and the costs of extending buildings, adding plant and equipment will be borne by the Hospitals and Charities Commission. The Commission has also assured your Board that the establishment of a Group Laundry will not be allowed to interfere with the development of the Institution, should such development be approved.

**APPRECIATION :** Consideration of the income during the period under review again impresses your Board with the great public interest in your Home shown in a tangible way by the steadily increasing revenue. Contributions from Commonwealth and State Governments have been increased to meet the rising costs of commodities, wages and general supplies. Very generous support has been received from the many good friends of the Institution. Your Board is deeply indebted to them all. Special mention is made of the support from the Ballarat Travellers' Social Club, the Ballarat Fidelity Club and the Ballarat Charity Sunday Fund Committee and City Bowling Club. Legacies and donations from trustees of deceased estates were also received with sincere appreciation. Grateful reference is made to the legacy bequeathed by the late George Douglas Hailey. The deceased, who had been an inmate of the Home for some years prior to his death, had before entering the Home, placed all his business affairs in the hands of a Trustee Company and had made a will making The Queen Elizabeth Home the sole beneficiary. It was not until after this old gentleman's death that your Board learnt that the legacy would exceed £7,000. The Board decided to apply this amount towards its share of the cost of the additions to the staff quarters and in memory of this generous benefactor its has been decided to name the new wing "The George D. Hailey House."

**TWO GENEROUS DONATIONS :** Your Board records its very sincere gratitude to a lady, who at this stage prefers to remain anonymous, for her wonderfully generous donation of £5,000. Her consent to the naming of a wing of the new building in her honour has been sought.

Your Board is also deeply grateful to another generous supporter who has donated £1000 towards our Building and Equipment Fund. The list of contributors will be found at the back of this book, and to all those generous ladies and gentlemen your Board reiterates its grateful thanks.

**THE GENERAL ADMINISTRATION AND MANAGEMENT :** Your Board records its thanks to the staff generally for efficient services during the year. Visitors have made complimentary references to the efficient management of the Home and your Board heartily endorses these references. There has been freedom from staff troubles and difficulties, the routine work of the Institution has proceeded smoothly and efficiently and your Board thanks and congratulates the Executive Officers, the Departmental Heads and each and every member of the staff on the performance of their duties which has maintained the prestige of The Queen Elizabeth Benevolent Home at a very high level.

No report would be complete without reference to the kindly interest and practical help of the Ladies' Auxiliary. The Annual Picnic is a special feature of the Auxiliary's work, and the Christmas Treat is another major undertaking, but in addition to these, all the year round the Auxiliary is helping and providing special treats. With our inmates the name "Ladies' Auxiliary" is synonymous with "love and good cheer."

Another highlight of the year is the Annual Concert and High Tea provided by the Ballarat and District Unit of the Presbyterian Girls' Fellowship. Your Board is indeed grateful to the members of the Ladies' Auxiliary, the members of the P.G.F., and those other bodies of ladies and gentlemen who have provided good cheer, entertainments and comforts for the old folk in its care.

**EGG APPEAL :** The result of last year's appeal showed an improvement on the previous year and the Board's best thanks is extended to the Teachers and Children of our schools, as well as our other kind friends, for generous donations of eggs.

**HONORARY OFFICERS:** The Board is sincerely appreciative of the valuable professional services given so graciously by our Honorary Medical Officers, Drs. G. T. James, Wm. Sloss and W. A. Spring; our Honorary Dentist, Dr. S. A. Wilson; our Honorary Optometrists, Messrs. Wastell and Cutter; our Honorary Solicitor, Mr. H. G. Morrow, and our Honorary Architects, Messrs. P. S. Richards and G. S. Richards.

The physical needs of the inmates have never received better attention. Our Medical Officer, Dr. M. V. Robinson, has been attentive and his directions have been carried out with kindly skill by Matron, Sisters and Nursing Staff. The comfort of the inmates depends upon the efficiency of several departments. Food is prepared in the main kitchen, washing is handled by the laundry, cleaning is done by the staff of cleaners, warmth in winter, hot water, steam, etc., is provided by the boiler-house staff, each staff having its own departmental heads and the work of all departments is co-ordinated by the administrative staff into a smoothly operating whole.

The spiritual welfare of our inmates is attended to by the Chaplains of the Anglican, Methodist, Presbyterian and Roman Catholic Churches and by Clergymen of other denominations as well as many groups and individuals who do much to comfort those whose lives are drawing towards the close.

The recreational life and entertainment of the inmates is particularly well catered for. Talkie shows are held in Lederman Hall every second Wednesday and on the alternate Wednesday a concert of inmate artists is provided. This has been most successfully organised by our Ladies' Auxiliary with Mesdames G. Flack and E. Morison as comperes and Mr. Percy Campbell as pianist. Many other organisations have provided concerts and other entertainments for the inmates. Programmes from the Lederman Hall are relayed through our amplifier system to every ward in the building.

The Bowling Club is not as strong numerically as your Board has expected but it is a most enthusiastic Club and has its own Officers and Committee. Mr. D. Stenning has been coach and adviser and the members are particularly grateful to him for his great interest.

The Library has now been moved to the room adjacent to Lederman Hall, which was formerly used as a Nurses' Dining Room. Matron has made this popular amenity her special care and Mr. C. W. Murray of 509 Eyre Street, Ballarat, has regularly given several afternoons a week to the repairing, renumbering and cataloguing of the books donated by many kind friends of the Home. To Matron and Mr. Murray and their inmate assistants, the Board tenders its grateful thanks.

**THE CHARITIES BOARD OF VICTORIA:** This body, which had been in existence for 25 years, ceased to exist from 15th November, 1948, and from that date its functions were taken over by the Hospitals and Charities Commission. Your Board records its very sincere appreciation of the excellent services of the members of the Charities Board and its officers in the Hospital Field and extends to the Chairman, Mr. C. L. McVilly, the Deputy Chairman, Dr. R. F. Watson, and Mr. C. R. Frencham of the recently established Hospitals and Charities Commission, its congratulations upon their appointment and its thanks for their advice, assistance and co-operation since they assumed office.

There have been many official and unofficial visits from representatives of many organisations and public bodies and while it is not possible to enumerate them all, your Board mentions the visits of Sir Albert Dunstan, M.L.A., when Minister of Health; The Hon. Gartside, M.L.C., Minister of Health, Victoria; and The Hon. C. A. Kelly, M.L.A., Minister of Health for New South Wales, and the Hon. J. G. Barclay, High Commissioner for New Zealand.

FINANCE: The Hospitals and Charities Commission has directed that the financial year of Hospitals and Institutions under its control shall terminate on the 31st March in each year, consequently the statements of Accounts presented with this report cover the period from 1st July, 1948, to 31st March, 1949. This should be taken into consideration when comparisons are made with statements published for previous years.

The Statements submitted clearly set out the receipts and expenditure for the period under review and amplification is hardly necessary.

The total revenue for the period is satisfactory and appreciable improvements under many headings are apparent.

The expenditure has also increased considerably, due to conditions beyond your Board's control. The full impact of the 40 hour week is now reflected in our wages' account, and under practically every heading the cost per head has increased. The year closed with a deficiency of £707.

The average cost per head per day for the period was 7/9. The average cost for the previous year was 6/7.

A budget for the year 1st April, 1949, to 31st March, 1950, prepared by your Officers and examined very carefully by your Finance Committee shows a rather alarming estimated deficiency.

SOCIAL SERVICES: Many official and semi-official statements have been made regarding the increases during the past few years that have been made in the contributions by Commonwealth and State Governments towards the cost of maintaining public hospitals and allied charitable institutions. On these statements and in view of the taxation for social services there is a regrettable tendency on the part of ill-informed or thoughtless people to publicly urge that the whole of the money required by Hospitals and Charities should be raised by taxation. While it is only fair that the Commonwealth and State Governments should contribute towards the extra costs of maintaining hospitals, some of which are directly due to higher wages and shorter working hours, your Board earnestly urges the contributors to oppose the suggestion that all hospitals and institutions should be wholly financed by the Governments.

If such came into effect the Government would demand the full control and management of the hospitals and institutions. Your Board maintains that a managing body, elected by the contributors and representing a cross section of the professional, business and industrial life of the community, with the members having direct contact with patients and their relatives, freedom of choice in the selection of its executive officers and staff and the liberty to introduce (within the limitations of the Hospitals and Charities Act) such improvements in the standards of service and management as it may deem necessary, can provide the Community with a more efficient, humane and flexible service. On the other hand, purely government controlled hospitals would be hampered by regulations; the introduction of improved services retarded, original thought discouraged and the Executive Officers frustrated and disillusioned by the dead hand of officialdom.

In conclusion, while it is impossible to mention all our kind friends and benefactors by name, your Board desires to place on record its very deep appreciation of the splendid support and encouragement given by the public generally. The work of caring for the aged and chronic sick, the helpless, homeless and infirm, is no light task and makes heavy demands upon the physical and mental strength of the staff. The Board feels that it will be appropriate to conclude this report with a "Thank You" to the Staff.

On behalf of the Board of Management,

ARTHUR W. NICHOLSON, President.



#### ADDENDA.

As President I would like to record my appreciation and thanks to all those who play their part so well and effectively in placing this Home on the highest standard of effective service to the aged and infirm.

To Mr. Keith Mackay, our Manager, I tender my grateful thanks for his unfailing assistance to make my year of office most enjoyable. His devotion to the well-being of the inmates, ability, foresight and careful management has created goodwill and respect of the highest order, not only in this City but very far afield.

To Mr. C. C. FitzGerald for his thorough and most efficient work as Accountant.

To Matron G. Mandeville Halls for her able control on the nursing side and her ability to handle and care for the very large number in her charge.

To Sub-Matron Zachariah, who ably assists Matron in her task.

To the Engineer, Mr. H. R. Tonks, who has with great enthusiasm and ability kept plant and buildings in excellent condition.

To Mr. J. Allan, head Gardener, for his beautifying and orderly control of the very fine surroundings to the Home.

To Mr. C. A. Young for his able and courteous representation as Collector of public subscriptions.

To the remainder of the Staff, thank you for your courteous co-operation.

I cannot express in full my gratitude and thanks to the members of the Board of Management and the Treasurer for their co-operation during my term as President. Any achievement, progress and consolidation has been furthered by their considerate help. We have worked as a Board most harmoniously with the objective of not only improving, but of extending the service and capacity of the Home to provide for all needy cases, especially the chronic sick requiring our care. We shall continue to work towards this very desirable and necessary objective.

In conclusion, we thank the Ballarat "Courier" for valuable and informative publicity, and all our benefactors and the public generally for their splendid support and encouragement in the work and maintenance of The Queen Elizabeth Benevolent Home.

ARTHUR W. NICHOLSON, President.



MATRON AND SISTERS.



A CORNER OF THE LIBRARY.

### RESERVE ACCOUNT

To Transfer to Capital Account .....	£5,427 6 11	By Balance at 1st July, 1948 .....	£5,070 19 2
" Transfer to Reserve Investment .....	1,397 0 0	" Legacies .....	509 13 4
" Balance, 31st March, 1949 .....	70 19 2	" Transfer from Reserve Investment .....	1,200 0 0
		" Transfer from Property (Capital) Bank Account .....	114 13 7
	£6,895 6 1		£6,895 6 1

### ENDOWMENT ACCOUNT

To Transfer to Maintenance Account .....	£70 4 2	By Balance, 1st July, 1948 .....	£2,900 0 0
" Balance, 31st March, 1949 .....	2,900 0 0	" Income from Investments .....	70 4 2
	£2,970 4 2		£2,970 4 2

### PROPERTY (CAPITAL) BANK ACCOUNT

To Government: Grants .....	£846 0 0	By Balance, 1st July, 1948 .....	£5,962 18 9
" Loans .....	1,499 12 8	" Repayments: Loans .....	1,871 0 0
" Donations (Specific) .....	514 19 0	" Land and Buildings Account—	
" Transfer from Maintenance Bank Account .....	17 0 6	New Buildings .....	£63 6 5
" Transfer from Reserve Account .....	4,227 6 11	Additions and Major Alterations .....	1,452 5 1
" Transfer from Furniture and Equipment Account .....	344 9 6	Minor Works .....	309 3 11
" Balance, 31st March, 1949 .....	3,803 9 1		1,824 15 5
		" Plant and Machinery .....	417 0 5
		" Furniture and Equipment .....	1,177 3 1
	£11,252 17 8		£11,252 17 0

### REPAIRS AND REPLACEMENTS RESERVE BANK ACCOUNT

To Balance, 1st July, 1948 .....	£7 12 8	By Proportion of Wages paid to Employees on the Maintenance of the Establishment: .....	£2,403 19 8
" Transfer from Maintenance Bank Account—		Other Expenses incidental to Establishment Maintenance .....	1,278 6 7
Government: Grant .....	1,413 0 0	" Balance at 31st March, 1949 .....	1 6 5
Institution's Contribution .....	2,263 0 0		£3,683 12 8
	£3,683 12 8		

**MAINTENANCE ACCOUNT**  
**STATEMENT OF INCOME AND EXPENDITURE FROM 1st JULY, 1948, to 31st MARCH, 1949**

<b>To ORDINARY EXPENDITURE:</b>			
Provisions .....	£10,244	4	7
Surgery and Dispensary .....	793	13	7
Domestic .....	5,859	18	10
Salaries and Wages .....	37,599	14	3
Miscellaneous and Administration .....	1,417	0	7
<b>SERVICE COST</b>	<b>55,914</b>	<b>11</b>	<b>10</b>
Establishment Charges—Repairs to Buildings .....	3,570	0	0
Finance .....	1,243	1	9
<b>TOTAL COST</b>	<b>60,727</b>	<b>13</b>	<b>7</b>
<b>EXTRAORDINARY EXPENDITURE</b> .....	<b>18</b>	<b>13</b>	<b>0</b>
<b>TOTAL GENERAL EXPENDITURE</b> .....	<b>60,746</b>	<b>6</b>	<b>7</b>
<b>By ORDINARY INCOME:</b>			
Government Grant—			
Hospitals and Charities Fund .....	£29,061	0	0
Hospital Benefits Fund: Public Wards .....	10,615	0	0
On account Mental Patients .....	5,156	10	0
<b>Municipal Grants</b> .....	<b>55</b>	<b>12</b>	<b>0</b>
<b>Charitable Contributions—</b>			
Annual Subscriptions .....	1,658	4	10
Entertainments .....	2	10	0
Ballarat Charity Sunday Fund .....	112	0	0
Other Collections and Donations:			
Cash .....	£1,025	12	11
Kind .....	175	0	6
<b>Legacies (Unconditional) in Sums not exceeding in each case £100</b> .....	<b>471</b>	<b>10</b>	<b>3</b>
<b>Patients' Fees or Payments on account of Inmates—</b>			
In-Patients (Public Beds) .....	1,050	7	4
Commonwealth Government Payments—			
Old Age and Invalid Pensions .....	9,426	16	6
Widow Pensions .....	44	15	5
War Service Pensions .....	88	14	11
<b>Income from Investments</b> .....	<b>171</b>	<b>2</b>	<b>10</b>
<b>Miscellaneous—</b>			
Sale of Produce, Refuse and Stores .....	144	7	7
<b>TOTAL ORDINARY INCOME</b> .....	<b>59,259</b>	<b>5</b>	<b>1</b>
<b>EXTRAORDINARY INCOME—</b>			
Proceeds from Public Appeals .....	780	2	11
<b>TOTAL ORDINARY AND EXTRAORDINARY INCOME</b>	<b>60,039</b>	<b>8</b>	<b>0</b>
Deficiency for Financial Period .....	706	18	7
<b>GRAND TOTAL</b> .....	<b>£60,746</b>	<b>6</b>	<b>7</b>

## MAINTENANCE FUND ACCOUNT

To Deficiency—Financial Period .....	£706 18 7	
" Transfer to Reserve Investment Account .....	217 11 4	
" Balance, 31st March, 1949 .....	935 9 7	
	£1,859 19 6	
By Balance, 1st July, 1948 .....		£1,859 19 6
		£1,859 19 6

## BALANCE SHEET at 31st MARCH, 1949.

<b>LIABILITIES.</b>			
Bank Overdraft—			
Maintenance .....	£10,398 14 6		£1 6 5
Sundry Creditors—Maintenance .....	1,063 10 4		75 0 0
Loans—Bank .....	£16,657 9 3		3,274 7 6
Property (Capital) .....	3,803 9 1		1,993 19 8
Reserve Fund .....	20,460 18 4		200 3 0
Endowment Fund .....	70 19 2		10,915 10 1
Repairs and Replacements Reserve Fund .....	2,900 0 0		70 19 2
Unexpended Capital Gifts .....	1 6 5		2,900 0 0
Institution Capital .....	1,720 0 0		158,830 19 6
Maintenance Fund—Accumulated Surplus .....	174,760 7 5		34,078 15 5
Deposits on Tenders .....	935 9 7		
In-Patients' Fees Paid in Advance .....	50 0 0		27 5 0
Trust Account .....	7 0 0		19,855 2 5
	£232,223 8 2		
<b>ASSETS.</b>			
Cash at Bank—			
Repairs and Replacements Reserve Account .....			£1 6 5
Cash in Hand .....			75 0 0
In-Patients' Fees Outstanding .....			3,274 7 6
Income Accrued .....			1,993 19 8
Prepayments .....			200 3 0
Stores on hand .....			10,915 10 1
Reserve Investments .....			70 19 2
Endowment Investments .....			2,900 0 0
Buildings .....			158,830 19 6
Plant, Machinery, Furniture and Equipment .....			34,078 15 5
Commonwealth Bonds—Balance due by Employees on ac- count Bonds purchased on their behalf .....			27 5 0
Trust Account Investments .....			19,855 2 5
	£232,223 8 2		

### AUDITORS' CERTIFICATE.

We hereby certify that we have audited the Books, Vouchers and Documents of the Institution and find that the postings are accurately made under their proper headings and that the Statement of Accounts, including the Balance Sheet, are correct. We have inspected the Securities and Insurance Policies and obtained Bankers' Certificates with respect to the balances represented by Assets in the various Statements of Accounts and found them in order.

Dated 19th May, 1949.

W. A. AIKINS, A.C.A. (Aust.), }  
G. A. GILLBERT, A.C.A. (Aust.), } Auditors.



THE MEN'S SUN ROOM



Harold Blair, the Celebrated Aboriginal Tenor, singing to Patients and Staff.



★

Mr. L. LEDERMAN, Honorary Treasurer.

Elected Member of Board  
of Management, 1902.

President 1912.

A Member of the Board  
for 47 years.

Honorary Treasurer  
for 37 years.

★



THE LEDERMAN HALL (Concert Hall and Dining Room)

## BOARD OF MANAGEMENT ATTENDANCES.

	Board Special	Board.	Executive.	Building.	Finance.	Special Finance.	Gardens.	Bowling Green.	Public Relations.
NICHOLSON, ARTHUR W. (President) . .	10	6	12	9	13	1	3	1	1
CUTTER, G. B. (Senior Vice-President) . .	9	4	12	7	13	1	3	1	1
HURREN, F. J. (Junior Vice-President)	9	2	6	3	8	1	2	1	1
LEDERMAN, L. (Hon. Treasurer) . . .	11	6	12	9	13	1	3	—	—
ARCHER, K. S. B. (Govt. Nominee) . . .	9	4	—	—	4	1	—	—	—
PITTARD, HON. A. J. (Board Member)	4	2	—	—	—	—	—	—	—
KEITH, J. . . . .	6	2	—	—	—	—	2	—	—
BARNES, D. . . . .	10	4	—	—	—	—	—	—	1
DAVIES, F. T. . . . .	8	5	—	7	—	—	3	—	—
EYRES, C. N. . . . .	4	5	—	4	—	—	—	—	—
FRASER, A. C. . . . .	7	2	—	—	—	—	—	—	1
SMAIL, J. J. . . . .	9	4	7	7	—	—	—	—	—
NORTH, L. F. . . . .	7	5	—	6	—	—	—	—	1
LAWRY, G. B. . . . .	9	3	12	3	12	1	1	1	—
KENT, E. N. . . . .	8	6	8	8	9	—	—	—	—

MEETINGS HELD: Board, 11; Special Board, 6; Executive, 12; Building, 9; Finance, 13;  
Special Finance, 1; Gardens, 3; Bowling Green, 1; Public Relations, 1.



COMPARATIVE STATEMENT AT 30th JUNE, 1948.

RECEIPTS—	1945	1946	1947	1948	*
	1949				
Government Grants . . . . .	£19635 1 2	£27725 8 7	£45844 14 7	£54097 17 3	£44832 10 0
Municipal Grants . . . . .	266 6 6	256 17 6	247 18 6	243 19 6	55 12 0
Annual Subscriptions . . . . .	1394 16 2	1711 9 6	2327 10 8	2129 12 0	1658 4 10
In-Patients . . . . .	21431 4 10	17748 17 7	8337 4 6	10533 14 11	10640 14 2
Income from Investments . . . . .	587 2 9	426 9 10	418 2 5	493 15 10	171 2 10
Other Sources of Ordinary Revenue . . . . .	2612 19 8	1636 5 11	2269 9 8	2893 9 1	1931 1 3
<hr/>					
Total Ordinary Revenue . . . . .	45927 11 1	49505 8 11	59445 0 4	70392 8 7	59259 5 1
Total Extraordinary Revenue . . . . .	3431 15 0	599 1 7	659 6 11	776 9 3	780 2 11
<hr/>					
EXPENDITURE—					
Provisions . . . . .	8580 6 7	9537 5 6	10493 15 3	11498 10 10	10244 4 7
Surgery and Dispensary . . . . .	248 10 2	834 2 8	763 1 0	979 8 9	793 13 7
Domestic . . . . .	5944 19 3	6352 11 1	5108 1 2	6726 12 6	5859 18 10
Establishment Charges . . . . .	3609 3 9	3834 12 1	2558 0 0	3800 0 0	3570 0 0
Miscellaneous and Administration . . . . .	1361 0 5	1107 7 4	1949 14 5	1854 6 10	1417 0 7
Salaries and Wages . . . . .	25121 7 0	32214 7 3	37742 11 6	43239 3 2	37599 14 3
Finance . . . . .	1215 11 3	1198 1 6	1729 2 11	1672 4 0	1243 1 9
<hr/>					
Total Ordinary Expenditure . . . . .	46080 18 5	55078 7 5	60344 6 3	69770 6 1	60727 13 7
Total Extraordinary Expenditure . . . . .	—	109 0 0	—	36 6 3	18 13 0
<hr/>					
FINANCIAL—					
Bank Overdraft :					
Maintenance . . . . .	748 11 0	1140 13 1	5600 3 1	7174 3 8	10398 14 6
Capital . . . . .	21715 2 0	28746 7 1	29260 8 7	22991 15 4	20460 18 4
Bank Credit :					
Maintenance . . . . .	—	—	—	—	—
Capital . . . . .	—	—	—	—	—
Sundry Creditors . . . . .	438 2 5	744 2 9	852 12 6	1236 8 8	1063 10 4
Sundry Debtors . . . . .	4454 0 4	3651 4 3	4266 7 7	4634 8 5	5495 15 2
Endowments . . . . .	2900 0 0	2900 0 0	2900 0 0	2900 0 0	2900 0 0
Reserve . . . . .	7828 5 9	6200 0 0	6270 19 2	5070 19 2	70 19 2
<hr/>					
STATISTICAL—					
Average Cost per Bed					
Occupied . . . . .	80.3	95.16	104.08	121.103	105.8
Daily Average: In-Patients . . . . .	573.3	578.78	579.75	576.12	573.9
Daily Average: Paid Staff . . . . .	112	137	132	160	170
Accommodation . . . . .	535	575	575	575	581

\*For 9 months ended 31st March, 1949.



THE ORMOND LOUNGE.



THE VERANDAH OF THE MARGARET HOARE WARD.



ONE OF THE EIGHTEEN-BED WARDS FOR WOMEN



MEDICINE TIME

## MAINTENANCE COSTING STATEMENT

FINANCIAL YEAR. 1st JULY, 1948, TO 31st MARCH, 1949.

DAILY AVERAGE OCCUPIED BEDS FOR THE YEAR (PATIENTS)—573.9.

Total In-Patients Treated—787.

Headings of Expenditure.	Cost	Proportion of Cost allocated to In-Patients	Average Cost per Bed for Daily Average In-Patients	
Provisions . . . . .	£10,244 4 7	£10,244 4 7	17.8	
Surgery and Dispensary ..	793 13 7	793 13 7	1.3	
Domestic . . . . .	5,859 18 10	5,859 18 10	10.2	Average Cost per day 7/9
Salaries and Wages . . . . .	37,599 14 3	37,599 14 3	65.5	
Miscellaneous and Administration . . . . .	1,417 0 7	1,417 0 7	2.4	
<b>SERVICE COST . . . . .</b>	<b>£55,914 11 10</b>	<b>£55,914 11 10</b>	<b>97.4</b>	Average Cost per In-Patient treated £77.1
Establishment . . . . .	3,570 0 0	3,570 0 0	6.2	
Finance . . . . .	1,243 1 9	1,243 1 9	2.1	
<b>TOTAL COST . . . . .</b>	<b>£60,727 13 7</b>	<b>£60,727 13 7</b>	<b>105.8</b>	
Extraordinary . . . . .	£18 13 0			
<b>GRAND TOTAL . . . . .</b>	<b>£60,746 6 7</b>			

## CONSUMPTION OF COMMODITIES

Commodity.	Total Consumption.	Consumption per 100 Patient and Staff Days.
Meats . . . . .	48,205 lbs.	30.1 lbs.
Bacon . . . . .	570 lbs.	.35 lbs.
Fish . . . . .	2,297 lbs.	1.4 lbs.
Milk . . . . .	16,989 galls	10.6 galls.
Butter . . . . .	8,509 lbs.	5.3 lbs.
Eggs . . . . .	4,306 doz.	2.6 doz.
Bread . . . . .	79,336 lbs.	49.6 lbs.
Flour . . . . .	6,450 lbs.	4.03 lbs.
Sugar . . . . .	23,681 lbs.	14.8 lbs.
Jam . . . . .	6,589 lbs.	4.1 lbs.
Tea . . . . .	3,143 lbs.	1.9 lbs.
Coffee and Cocoa . . . . .	144 lbs.	.09 lbs.
Cereals . . . . .	15,234 lbs.	9.4 lbs.
Soap {Laundry} . . . . .	15,572 lbs.	9.7 lbs.
Soap {Household} . . . . .	2,317 lbs.	1.4 lbs.
Vegetables . . . . .	126,634 lbs.	79.2 lbs.
Fruit . . . . .	31,779 lbs.	19.8 lbs.
Cotton Wool . . . . .	251 lbs.	.15 lbs.
Lint . . . . .	—	—
Gauze . . . . .	2,200 yds.	1.3 lbs.
Firewood . . . . .	1,873 tons	1.17 tons
Coal and Briquettes . . . . .	83 tons	.05 tons
Coke . . . . .	6 tons	.003 tons
Fuel Oil . . . . .	—	—
Gas . . . . .	223,500 c. ft.	139.8 c. ft.
Electric Current . . . . .	79,122 units	49.5 units

Patient or Inmate Days . . . . .	157,251
Resident Staff Days . . . . .	2,572
TOTAL . . . . .	159,823



MEAL TIME (AMBULATORY WOMEN)



A CORNER OF THE SOUTH SOLARIUM



★  
MORNING  
TEA  
★



★  
THE MAYOR  
(Cr. F. C. Wray)  
and  
Mrs. WRAY  
greeting  
Mrs. HORNSBY  
on her  
100th BIRTHDAY

★

## LIST OF CONTRIBUTORS

ANONYMOUS.		
Anonymous	£0	10 0
A Friend	0	10 0
Anonymous	5	0 0
Bull Frog	1	1 0
Anonymous	1	1 0
Anonymous	105	0 0
Blacksmith	0	10 0
Anonymous	1	1 0
Anonymous	1	1 0
Anonymous	0	10 0
Anonymous	0	10 0
Wellwisher	40	0 0
Anonymous	7	0 0
Anonymous	1000	0 0
Anonymous	5000	0 0
Ashley, W. W.	1	1 0
Abson, M.	1	0 0
Abraham, I., Pty. Ltd.	1	1 0
Aikins, W. A.	1	1 0
Archer, K. S. B.	1	1 0
Andre, M.	0	10 6
Adams, Herbert, Pty. Ltd.	5	5 0
Ashkar, A.	1	1 0
Apex Club of Ballarat	1	1 0
Australian Exhibition Commissioners	2	2 0
Andrews, Chas.	1	1 0
Anstis, J. A., Pty. Ltd.	1	1 0
Allison, E. M.	0	10 0
Alexander, S.	0	10 0
Aronson, D. & A.	0	10 6
Adamthwaite, A.	0	10 0
Allan Bros.	1	1 0
Allchin Bros.	0	10 6
Abbey, Mrs., and Lean, Miss	3	0 0
Arthur, Mrs. G. T.	0	10 0
Anderson & Bryant Pty. Ltd.	0	10 6
Avent, F.	1	1 0
Arthur, J.	0	10 0
Allan, Jane	9	10 0
Amalgamated Eng. Union Members	3	1 0
BANKS.		
Commercial Bank of Australia Ltd.	2	2 0
Union Bank of Australia Ltd.	2	2 0
National Bank of Australia Ltd.	3	3 0
Commercial Banking Co. of Sydney	1	1 0
Bank of New South Wales	3	3 0
English, Scottish and Australian Bank Ltd.	3	3 0
Bank of Australasia	2	2 0
Ballarat Banking Co. Ltd.	3	3 0
Baxter & Stubbs	1	1 0
Barlow, Mr. and Mrs. H.	2	2 0
Blomeley, C. A.	1	1 0
Bray, C. C.	0	10 6
Bartle, R. C.	0	10 6
Banks, W.	0	10 0
Bickart, A. L.	1	1 0
Ballarat Broadcasters Pty. Ltd.	25	0 0
Brooks, G. H.	1	0 0
Boustead, A. C.	1	1 0
Briant, Mrs. R.	1	1 0
Burrumbeet & Windermere Farmers' Co-Operative Society	1	1 0
Ballarat Steam Laundry	2	0 0
Ballarat Products Ltd.	7	7 0
Ballarat Sub-Branch Printing Employees' Union of Australia	1	1 0
Bartrop, Edgar	1	1 0
Brown, Miss Irene	0	10 0
Burge, F.	0	10 0
Bilsons Pty. Ltd.	1	1 0
Ballarat Theatres Ltd.	2	2 0
Blakely, Bob & Co.	0	10 6
Blayney, M.	0	10 6
Brown, C. E.	1	1 0
Baird, D.	1	1 0
Bryant & Gourley	1	1 0
Brown, J. H. & Son Pty. Ltd.	1	1 0
Brierley, T. G.	1	10 6
Beaurepaire Tyre Service Pty. Ltd.	1	1 0
Burgess, J.	0	10 6
Beaufort Football Club	1	1 0
Ballarat Bankers' Social Club	1	1 0
Black Hill Fair Committee	1	1 0
Butler, A. E.	0	10 0
Booth, H.	1	1 0
Barnes, F. W. & Son	2	2 0
Beacham, Mrs. J.	1	1 0
Britannia Pictures	1	1 0
Brophy, Foley & Co.	1	1 0
Ballarat Star Dairies Pty. Ltd.	1	1 0
Bryce, Mrs. H.	1	0 0
Bullock, A. B.	2	0 0
Ballarat Tramways Social Welfare Benefit Mortality Club	5	5 0
Baker, Mrs. Elsie	1	0 0
Ballarat Tramway & State Electricity Commission Benefit Fund	0	10 6
Ballarat "Courier" Social Club	1	1 0
Balfour, W.	0	10 0
Bruce, John	1	0 0
Binder, Marion	0	10 0
Brown's Hardware Store	1	1 0
Bulluss, Ray	0	10 6
Ballarat "Courier" Pty. Ltd.	2	2 0
Brown's Confectionery Pty. Ltd.	2	2 0
Bowman, Eric	1	1 0
Berry, Anderson & Co.	1	1 0
Brown, Miss E.	0	10 0
Barrell, W.	0	10 0
Byrne, T. E.	0	10 6
Britt, J. J.	0	10 6
Bridgewater, E. S.	0	10 0
Ballarat Gas Company	2	2 0
Brownlow, Mrs. M.	0	10 0
Bouzoukies, N.	0	10 6
Bailey Bros.	0	10 6
Blain, Eric	0	10 0
Ballarat Memorials Pty. Ltd.	1	1 0
Berryman, E. J.	1	1 0
Boulger, Mr. & Mrs. M.	0	10 0
Ballarat Bowling Social Club	1	1 0
Ballarat Meat Stores	1	1 0
Ballarat Trustees, Executors & Agency Co. Ltd.	1	1 0
B'air, Miss J.	1	1 0
Bedggood, A. S.	1	1 0
Ballarat Fidelity Club	2	2 0
Buckland, R. J.	0	10 0
Ballarat Woollen & Worsted Co. Ltd.	5	5 0
Ballarat Brewing Co. Ltd.	5	5 0
Brown, Harry & Co.	1	1 0



Blomely, T. A. . . . .	1	1	0
Boyd, J. H. . . . .	0	10	0
Blackman, L. A. . . . .	0	10	6
Bracks Bros. . . . .	1	1	0
Ballarat Gas Co. Welfare Club . . . . .	0	10	6
Ballarat Modern Dairy Co. Pty. Ltd. . . . .	2	2	0
Bedggood, A. E. . . . .	1	1	0
Brogden Bros. . . . .	1	1	0
Bryant & Cockburn . . . . .	1	1	0
Bennett, F. J. & Co. . . . .	1	1	0
Burnett, Emma . . . . .	2	10	0
Begg, N. . . . .	11	3	0
Ballarat Travellers' Social Club . . . . .	379	3	3
Bennett, H. P. . . . .	5	0	0
Binmore, Est. Hannah . . . . .	0	16	1
Ballarat Yacht Club . . . . .	1	1	0
Brown Hill Progress Assn. . . . .	1	1	0
Bennett, Est. Emma . . . . .	18	1	8
Ballarat Trustees, Executors & Agency Company Limited [Special donations] . . . . .	6	10	9
Benson, Miss M. . . . .	80	0	0

BOXES

Queen Elizabeth Home . . . . .	3	4	6
Park Hotel, per A. M. Murray . . . . .	6	10	0
Camp Hotel . . . . .	4	5	6
Cattle Yards Inn . . . . .	2	10	0
Carlyons Hotel . . . . .	1	13	6
Eyres Bros. . . . .	6	14	0
Bunch of Grapes Hotel . . . . .	0	16	0
Railway Hotel . . . . .	1	2	9
Canberra Hotel . . . . .	0	16	6

Coliseum Motors Pty. Ltd. . . . .	1	1	0
Cant, Mrs. A. . . . .	1	1	0
Cates, Graeme . . . . .	0	10	6
Cross & McGregor Bros. . . . .	1	1	0
Congress & Hickey . . . . .	1	1	0
Courts, W. . . . .	1	1	0
Clark & Crouch . . . . .	0	10	0
Crick, A. M. . . . .	0	10	0
Crosthwaite, R. W. . . . .	1	0	0
Cutbush, G. C. & Co. . . . .	1	1	0
Cooper, R. J. . . . .	1	0	0
Cook, E. A., Pty. Ltd. . . . .	0	10	6
Connell, R. J. . . . .	1	1	0
Clark & Dobson . . . . .	0	10	6
Co-Operative Fishermen's Association of Victoria Ltd. . . . .	0	10	0
Crawford Dowling Pty. Ltd. . . . .	1	1	0
Coulsen, E. A. . . . .	1	1	0
Coburg Visiting Billiard Players . . . . .	1	0	0
Cuthbart, Morrow, Must & Shaw . . . . .	2	2	0
Crocker, Geo., Pty. Ltd. . . . .	1	1	0
Carter, S. . . . .	0	10	6
Collins, A. H. . . . .	1	1	0
Cochran, E. B. . . . .	0	10	6
Currie, Miss Jean . . . . .	2	2	0
Coburn, H. L. . . . .	1	1	0
Chandler, D. & W., Ltd. . . . .	1	1	0
Cowley's Eureka Ironworks Pty. Ltd. . . . .	1	1	0
Coltman, W. F., Pty. Ltd. . . . .	1	1	0
Cornell, Walter & Sons . . . . .	1	1	0
Coyte, Miss V. . . . .	1	1	0
Chartres Pty. Ltd. . . . .	0	10	6
Connell, H. . . . .	0	10	0
Country Women's Assn., Burrumbeet Branch . . . . .	0	10	0
City R.S.L. (Melb.), Warrnambool & Redcliffs Bowlers . . . . .	5	5	0
Cameron, J. B. & Co. . . . .	1	1	0

Cherry, Wal Signs . . . . .	0	10	0
Carlton, T. A. . . . .	7	15	0
Caledonian Service Station . . . . .	0	10	6
Couison, E. . . . .	1	1	0
Crocker, Misses H. & C. . . . .	0	10	0
Clarke, David . . . . .	1	1	0
Conaughton, J. P. & Co. . . . .	1	1	0
Curwen-Walker, J. . . . .	1	1	0
Coghlan, O. . . . .	0	10	6
Crosthwaite, R. W. . . . .	0	10	6
Coghlan, Mrs. E. J. . . . .	0	10	0
Coles, G. J. & Co., Ltd. . . . .	2	2	0
Champion, J. G. . . . .	1	1	0
Coghlan, Mrs. E. R. . . . .	1	1	0
Charles, Jack . . . . .	1	0	0
Capell, Dr. W. A. . . . .	0	10	6
Clark, Geo. . . . .	1	0	0
Caledonian Ladies' Auxiliary . . . . .	2	5	0
Coulter, G. . . . .	0	10	0
Cockings Store Pty. Ltd. . . . .	1	1	0
Corbet, J. B. . . . .	0	10	6
Charles, A. O. . . . .	1	0	0
Charles, J. L. . . . .	0	10	0
Cameron, Mrs. W. E. . . . .	1	1	0
Cooke, C. . . . .	0	10	0
Clamp, C. H. . . . .	1	1	0
Collins, E. J. . . . .	1	1	0
Coone, Mrs. C. . . . .	1	1	0
Crouch, N. A. . . . .	1	1	0
Campbell, D. A. . . . .	0	10	0
Cripps & Deveson . . . . .	1	1	0
Cameron, Neil W. . . . .	5	5	0
Chambers, G. & W. . . . .	1	1	0
Cramer, G. . . . .	0	12	0
Comer, Mr. & Mrs. T. A. . . . .	2	2	0
Coughlan, Mrs. E. . . . .	0	10	0
Collins, Arthur J. . . . .	5	0	0
Corbett, Mrs. Janet . . . . .	56	0	0
Carroll, Mrs. M. J. . . . .	6	0	0
Cormack, Clara, Est. . . . .	3	16	6
Commercial Travellers' Assn. . . . .	10	10	0
Coad, Mrs. G. E. . . . .	1	0	0
Curnow, Est. Albert . . . . .	5	8	3
Country Women's Assn., Waubra . . . . .	5	0	0
Calway, Henry . . . . .	20	0	0
Calway, Est. Arabella . . . . .	3	15	7
Cormack, Mrs. A. S. . . . .	28	0	0
Douglas, Dr. J. C. . . . .	1	1	0
Ditchfield, C. . . . .	0	10	0
Ditchfield, Miss A. V. J. . . . .	1	1	0
D'Angri, W. . . . .	0	10	0
Dick, W. & Sons . . . . .	1	1	0
Duncan, F. E. . . . .	5	0	0
Dickens, S. E., Pty. Ltd. . . . .	51	1	0
Darling Miss A. . . . .	0	10	0
Davies, Mrs. E. M. . . . .	1	1	0
Duetscher, H. F. & Son . . . . .	1	10	0
Davies, W. B. . . . .	0	10	6
Dolan, R. . . . .	1	1	0
Davidson, Dr. G. R. and Baker, Dr. B. . . . .	0	10	6
Dickinson, Mrs. R. . . . .	0	10	6
Davies, H. A. . . . .	1	1	0
Duncan, Howard, Pty. Ltd. . . . .	1	1	0
Donis Smith, Mrs. . . . .	7	7	0
Dahlenbury, E. W. . . . .	1	0	0
Doepel, Lilley & Taylor . . . . .	1	1	0
Darling, Smith Pty. Ltd. . . . .	1	1	0
Dellaca, J. A. . . . .	1	1	0
Dunn, John . . . . .	1	1	0
Doble Bros. . . . .	0	10	6

Davidson, G. M.	0	10	0
Dean, Mrs. C. T.	0	10	6
Donovan, P.	0	10	0
Davey, J. M.	0	10	0
Driscoll, McIvor & Co.	1	1	0
Davies, Harry & Co. Pty. Ltd.	1	1	0
Dalgety & Co. Ltd.	1	1	0
Doyle, F. C.	1	1	0
Dooley, W.	0	10	6
Davis, J.	0	10	6
Dunstan, H. J.	2	2	0
Doodt, Norman	0	10	6
Davey, J. H.	0	10	6
Davis, Walter & Co.	0	10	6
Davies, F. T.	1	1	0
Downer, T. & Co.	1	1	0
Dobson, Mrs. C.	2	0	0
Dowdle, Mary	2	0	0
Eureka Sawmill & Timber Co.	2	2	0
Eyres Bros.	2	2	0
Elliott & Magill	1	1	0
Edwards, T. C.	0	10	6
Evans, A. & Sons	0	10	0
Eckt, J.	1	0	0
Edge, F. L.	1	0	0
Elder & Co.	0	10	0
Eckersley, Miss E.	1	0	0
Emu Footwear Pty. Ltd.	1	1	0
Eastern Joinery Works	0	10	0
Early & Co.	0	10	6
Ellis, Keith & Son	1	1	0
Earles & Jermyn	0	10	6
Edgar, G.	1	1	0
Ellis, Morris	0	10	6
Eldridge, Mrs.	1	0	0
Eldridge, Robert & Ellen	5	0	0
Evans, H. & Sons	1	1	0
Eva & Russell	2	2	0
Exchange Garage	1	1	0
English, Misses	1	0	0
Eureka Dry Cleaners	1	1	0
Evans & Metcalfe	1	1	0
Eves, Geo.	0	10	0
Ewins, J. & Sons Pty. Ltd.	1	1	0
Edmonds, Mrs. E. C.	1	0	0
Ezywalkin Pty. Ltd.	0	10	6
Eureka Terra Cotta & Tile Co. Ltd.	1	1	0
Eldridge, Mrs. M.	0	10	0
Ellis, Robert	60	0	0
Eldridge, Eric	20	0	0
Fargher & Roff	1	1	0
Frank, Mrs. A.	0	10	0
Fraser, A. C.	1	1	0
Fewtrell, Alan	1	0	0
Fraser, G.	1	1	0
Fletcher, Mrs. B. E.	0	10	0
Ford, Jim	0	10	0
Foord, Norman	0	10	6
Feltham, J. C.	1	1	0
Feary, W. G. & Sons	1	1	0
Fisken, A. C.	2	2	0
Ford Bros.	1	1	0
Freeman, Mrs. C.	0	10	0
Freeman, Mrs. E.	0	10	0
Ferguson, F. E.	1	1	0
Foo, A.	1	1	0
Finn, J.	0	10	6
Flohm, Miss L.	0	10	6
Faull, T. G.	1	1	0
Foord, J. C. & Co. Pty. Ltd.	1	1	0
FitzGerald, C. C.	1	1	0

Ferguson, Est. Douglas	14	8	3
Forbes, Mrs.	1	0	0
Fitzgerald, Mrs. J.	1	0	0

#### GEELONG SUBSCRIBERS.

Geelong Woolbrokers' Association	2	2	0
Cheatham Salt Pty. Ltd.	1	1	0
Bright & Hitchcock Pty. Ltd.	1	1	0
Bragge, T. C.	0	10	0
Solomons Pty. Ltd.	1	1	0
Purnell, Robert, Pty. Ltd.	1	1	0
Hawkes Bros. Pty. Ltd.	1	1	0
Trembath, Jack and Max	1	1	0
Andersons Pty. Ltd.	0	10	6
Blakeston & Co. Pty. Ltd.	5	0	0
Glover, C. & Sons	1	1	0
Griffiths, W. J.	1	1	0
Cole, Chas. & Co. Pty. Ltd.	1	1	0
Geelong Aerated Waters Pty. Ltd.	0	10	6
Thompson, Robert & Sons	1	1	0
McGie, R. R.	0	10	0
Jacobs, Morris, Pty. Ltd.	0	10	6
Crawcour & Hollyhoke	0	10	6
Harwood & Pincott	0	10	6
Volum Brewing Co. Ltd.	0	10	6
Sparrow, W. E.	0	10	6
Vogue Shoe Store	1	1	0
Stewart, Hugh	1	0	0
Hooper, Geo. & Co.	1	1	0
Hearne, W. G. & Co. Ltd.	1	1	0
Baxter, Mr. and Mrs. J. P. H.	5	0	0
Backwell, E. and Son Pty. Ltd.	1	1	0
Taylor, J. C. & Son Pty. Ltd.	0	10	6
Weddell, R. E.	0	10	6
Fagg Bros. Pty. Ltd.	0	10	0
Munday, James & Co. Ltd.	1	1	0
Collins Bros. Pty. Ltd.	2	2	0
Hooper, Harry	2	2	0
Purnell, B. E.	1	1	0
Redpath, W. R., Pty. Ltd.	1	1	0
Phoenix Wool Co. Pty. Ltd.	1	1	0
Chisholm, Est. J.	1	0	0
Veal, Miss A. K.	1	0	0
Donaghy, M. & Sons Pty. Ltd.	1	1	0
Shirley, Miss A. A.	0	10	0
Whyte, L. M.	2	0	0
Gray, A. S.	1	1	0
Washington, W. W.	0	10	0
Geelong R.S.L. Woollen & Worsted Manuf. Co.	0	10	0
Hirst, L.	1	0	0
Buchan, Laird & Buchan	0	10	0
Illingworth, W. G.	0	10	0
Crowe, T.	1	1	0
Nicholls, R. T.	2	2	0
McDonald & Fort	0	10	0
Davis, G. L.	1	1	0
Federal Woollen Mills Pty. Ltd.	2	2	0
Greenfields Pty. Ltd.	1	1	0
Gemmola, V.	0	10	6
Graham, R. & Sons Pty. Ltd.	2	2	0
George, H.	0	10	0
Grant, P.	10	0	0
Gears' Pharmacy	0	10	6
Griffiths, Dr. W. R.	1	1	0
Gillbert, G. A.	1	1	0
Goon, F. S.	0	10	6
Gainger, Arthur	2	2	0
Gunner Saunders Pty. Ltd.	1	1	0
Greene & Robertson	1	1	0
Gooch, W.	0	10	6

Grainger, Mrs. L. E.	1	1	0
Gullan, J. C.	1	1	0
Greenwood, F. H.	1	1	0
Green, C.	1	0	0
Gwyn, F.	0	10	6
Gullan, R.	0	10	6
Gallagher, O.	0	10	6
Gower, Mann & Roberts	0	10	0
Gay, G. & Co.	0	10	6
Gilbert, J. B. & Son	0	10	6
Gunns' Box Factory	0	10	6
Grigsbey, L. J.	0	10	6
Gower's Hosiery House	1	1	0
Garden City Flour Mill	1	1	0
Goller, J. J. & Co. Pty. Ltd.	2	2	0
Gribble, W. & Co. Pty. Ltd.	1	1	0
George, Miss K.	1	1	0
George, H. B.	1	1	0
Gurton, W. H., Tyre Co. Pty. Ltd.	0	10	6
Goodfellows Pty. Ltd.	0	10	6
Golden Pura Dairy	0	10	6
Gale, Mrs. F. C.	1	1	0
Griffiths J. J.	0	10	6
Gribble, Hollway & Heinz	1	1	0
Garlick, E. W.	1	1	0
Griffith, R. L.	0	10	6
Graham, Mrs. M. E.	1	1	0
Gallagher, M.	1	0	0
Griffiths Sweets Pty. Ltd.	0	10	6
Gangol, R.	20	6	1
Gibbs, Ruth	4	3	4
Graham, Florence A.	35	0	0
Granister, R.	0	15	0
Glendinning, Mrs. R. M.	12	12	0
Glasson, Mrs. Louisa	54	12	0
Halsted, W. H.	0	10	6
Heseltine, A. F.	1	1	0
Handbags and Novelties	1	1	0
Howie, F. S.	1	1	0
Hitchcock, E. A.	1	0	0
Henderson, A. L.	0	10	0
Herbert's Music Warehouse	0	10	6
Harrison, C. H.	0	10	0
Hives, J. H.	0	10	0
Hoskins' Stores Charity Fund	1	1	0
Halloran Motors	0	10	6
Hynes, R. P.	1	1	0
Hampton Hotel	0	10	0
Holmes, Miss M.	1	1	0
Hamilton, Mrs. P.	0	10	0
Hames & Woodward Pty. Ltd.	0	10	0
Harrison, A. B.	1	1	0
Herald & Weekly Times	3	3	0
Hewitt, T. J.	0	10	0
Hudson, R. A.	1	1	0
Healing, A. G., Ltd.	2	2	0
Hanrahan, Gerald	1	1	0
Honner, Mrs. M.	1	0	0
Hon, H.	1	1	0
Howell, R. C.	7	0	0
Holderson & Neilson Fresh Food Pty. Ltd.	1	1	0
Henderson, R. F.	0	10	0
Haymes, T. J.	0	10	6
Haymes, Henry, Pty. Ltd.	1	1	0
Hewitt & Whitty Pty. Ltd.	1	1	0
Hancock, A. W. & Co.	1	1	0
Harris, Miss E. A.	1	0	0
Harris, Fred.	1	0	0
Hately, S. A.	0	10	0
Hay, A. G.	0	10	0

Higgins, Mr. and Mrs. C. W.	1	0	0
Heres, Mrs. V.	1	0	0
Hoskin, J. A. & Son	1	1	0
Herbert, H. F.	0	10	6
Hitchcock, Mrs. H.	0	10	0
Holtz, Miss Olga	1	1	0
Hogg, J.	1	1	0
Hollway, John & Sons	1	1	0
Hayden, B. E. & Co.	1	1	0
Hobson, S. E.	1	1	0
Heinz Bros. Pty. Ltd.	1	1	0
Henderson, S. C.	0	10	6
Hutchinson, Mr. and Mrs. Albin	1	1	0
Hall-Taylor, C. H.	1	1	0
Harris, J. A.	1	1	0
Hennessy, L. E.	0	10	6
Hughes, T. & Sons	0	10	6
Hitchcocks, J. C.	1	1	0
Harbour, W. B.	0	10	0
Hendricksen, J. H.	1	1	0
Huddart, Parker Ltd.	1	1	0
Hager, A. W. & Sons	1	1	0
Hurren, F. J.	1	1	0
Hager, R.	1	1	0
Harrison, Mrs. M.	1	1	0
Hall, Miss Ellen	10	0	0
Hughes, Mrs. E.	115	10	0
Hall, Miss M. G.	54	0	0
Hazlett, Mrs.	8	10	0
Hals, Miss G. Mandeville	15	0	0
Hynam, F.	66	3	0

#### INSURANCE COMPANIES.

United Insurance Co. Ltd.	2	2	0
South British Insurance Co. Ltd.	1	1	0
Standard Insurance Co. Ltd.	1	1	0
New Zealand Insurance Co. Ltd.	1	1	0
Liverpool, London & Globe Insurance Co.	1	1	0
Royal Insurance Co. Ltd.	2	2	0
Insurance Office of Australia	0	10	6
Irwin, H. B.	1	1	0
Jones, W. & Son	1	1	0
John, I. R.	1	1	0
Jermyn, R.	1	1	0
James, Dr. C. T.	0	10	6
Jago's	0	10	6
Jenkins, D. W.	1	1	0
John, M. B. Ltd.	1	1	0
Jenkins, Ern.	1	1	0
Johns, A.	0	10	0
Jelbart Bros.	3	3	0
Jones, W. H.	0	10	0
Jenkins, H. V.	1	1	0
Jenkins, Chris.	2	2	0
Jephson & Co.	1	1	0
Jones, Hugh	0	10	6
Jenkins, E. & W., Bros.	0	10	0
John, M. B.	1	1	0
John, W. O.	1	1	0
John, J. T.	1	1	0
John, I. A.	1	1	0
John, D. L.	1	1	0
Jewell, W. C.	0	10	6
Johnson, Rt. Rev. Dr. W. H.	1	1	0
Johnson, Est. Margaret	0	18	6
Joyce, Est. Frederick	1	4	0
Jones, Mrs. A. A.	10	0	0
Johns, William C.	5	5	0

Kent, George	1	1	0
Kay Bros.	0	10	0
Kelly, J.	1	0	0
Kennedy, Martin	0	10	6
Keath, V. E.	1	1	0
Kodak (Aust.) Pty. Ltd.	1	1	0
Kittson, Hon. J. F.	1	1	0
Kaith, J.	1	1	0
Kinghorn, Mrs. J. C.	2	2	0
Keyes, J. & Son	0	10	0
Kent, E. N.	1	1	0
Keirce, F. T. & Co.	0	10	0
Kiniry, Rev. Father	0	10	6
Kewley, Mrs. J.	0	10	0
Kennedy, Murray Pty. Ltd.	1	1	0
King & George Motors Pty. Ltd.	0	10	6
Kane, M.	1	1	0
King, Alex. & Sons Pty. Ltd.	1	1	0
Knights, Miss	0	10	0
Knott, W. O.	0	10	0
Kerr, Mrs. J.	1	1	0
Kerr, T. A.	0	10	0
Knight, N.	0	10	6
Kelly, Est. Annie L.	5	11	0
Kerr, Mrs. Rachel	20	0	0
Kallowt, Est. Robert	2	4	2
Kay, W.	0	10	0
Kellam, E. A.	60	0	0

LISTS.

Ballarat North Railway Workshops Staff	7	12	6
Jeilbart Bros., Staff	0	16	0
Railway Goods Shed, Office Staff	1	2	0
Jas. Smith Pty. Ltd., Staff	1	16	0
H. George, Staff	0	16	0
Sunshine Biscuit Factory, Staff	6	2	0
Ballarat Railways, Ways and Works Staff	1	0	0
Camperdown Butter and Cheese Co. Ltd., Staff	4	12	0
Myer Mill, Staff (Special Effort)	2	2	0
Ballarat Water Commission Timber Mill Staff	3	3	0
M. B. John Ltd., Staff	21	13	6
Interknit Hosiery Co. Ltd., Clunes, Staff	3	0	0
Emu Footwear Pty. Ltd., Staff	1	3	6
J. H. Brown & Son Pty. Ltd., Staff	2	14	6
Oliver & Stevens, Staff	1	15	0
R. Graham & Sons Pty. Ltd., Staff	1	5	6
P.M.G. Lines Branch, Staff	1	15	0

LODGES.

All Nations Lodge, No. 28, Clunes	0	10	6
Loyal Victoria Lodge, M.U.I.O.O.F., No. 4731	0	10	6
A.N.A. Lodge, No. 4	1	1	0
Buninyong Lodge, No. 23	5	5	0
Loyal Ballarat Lodge, No. 20	1	1	0
A.N.A., No. 50 Branch	0	10	6
Yarrowee Chapter Lodge, No. 7	2	2	0
Wendouree Lodge, No. 336	1	1	0
St. John's Lodge, No. 36	2	2	0
Sturt Lodge, No. 427	2	2	0
Pioneer Lodge, I.O.O.F.	0	15	0
Sebastopol Lodge, No. 63	1	1	0
Hope Masonic Lodge, No. 274	2	2	0
Yarrowee Lodge, No. 10	2	2	0
Orion Lodge, No. 53	2	2	0
Ballarat Mark Master Masons Lodge, No. 114	1	1	0
Ballarat Preceptory, No. 228	2	2	0

Ballarat District M.U.I.O.O.F.	1	1	0
Ballarat Lodge, No. 114	2	2	0

LEGACIES AND TRUSTS.

Anstis Est., M. A.	£250	0	0
Hassell Est., Thos.	157	0	0
Wilson, Edward Charitable Trust	60	0	0
Cant, Est., R.	50	0	0
Pinkerton Est., F.	58	9	6
Jenkins Est., E. A. P.	170	4	7
Roberts Est., Eliza R.	3	2	6
Grayling Est., Jano	5	10	8
Lopez Est., A. D.	5	13	0
Felton, Alfred Bequest	140	0	0
Bolster Est., Richard	25	0	0
Brennan Est., Patrick	50	0	0
Forrest, C. L. Trust	10	0	0
Langlands Est., Henry	4	19	10
Hartley Est., J. R.	10	0	0
Mills Est., C. J.	50	0	0
Hutchinson Est., Alex.	100	0	0
Chard Est., Ellen	50	0	0
Pollard Est., W. B.	25	0	0
Foley Est., Timothy	102	13	4
Loftus, Moran, Pty. Ltd.	1	1	0
Leishman, A. T.	1	1	0
Leister, Mrs. J.	0	10	0
Lucas' Welfare Assn.	3	3	0
Lewis Construction Co. Pty. Ltd.	5	5	0
Liston, W.	1	1	0
Lemke, Geo. A. & Co.	1	1	0
Lockett, Howard & Sons	1	1	0
Lancashire, R. H., Pty. Ltd.	0	10	6
Lean, Mr. and Mrs. A.	0	10	6
Longhurst, W. E. & Sons	1	1	0
Levin, A. J.	5	0	0
Lederman, L.	4	4	0
Langford, R. W.	0	10	0
Lister's Junction Service Station	2	2	0
Ludbrook, H. C.	1	1	0
Ludbrook, E. G.	1	1	0
Littlehales, R.	0	10	6
Lear, Geo. C.	1	1	0
Lucas, E. & Co. Pty. Ltd.	2	2	0
Leckie, R.	1	0	0
Lifeguard Milk Products Pty. Ltd.	1	1	0
Leviston, Miss F. H.	5	0	0
Larsense & Sons	0	10	0
Littlehales, J.	1	1	0
Lancaster, J. W.	80	0	0
Leo, Mrs. Eda	12	1	0
Lee, Julianna	1	0	0
Lake, Mrs. E. A.	31	0	0
Leighton, Mrs. S.	1	0	0
MacRobertsons Pty. Ltd.	1	1	0
McGeachin, R.	0	10	6
McMahon, P.	0	10	6
McKenna, J.	1	0	0
McQueen, Miss J.	1	0	0
McFadyen & Taylor	1	1	0
McKenzie, A. K.	1	1	0
McDonald, C. M.	1	0	0
McGowan, Miss Edith	5	0	0
McPherson, M.	1	1	0
McClymont, Mrs. J.	0	10	6
McKay, James & Sons, Pty. Ltd.	1	1	0
McAloney, R.	0	10	0
McLean & Boakes	1	1	0
MacLeod & Booth	2	2	0
McArdle, Mrs. E. A.	0	10	0

McCartney, S. . . . . 0 10 0  
 MacLeod, John & Co. Pty. Ltd. . . . . 2 2 0  
 McKenzie, Mrs. Gladys . . . . . 5 5 0  
 McKinnon, E. D. . . . . 2 2 0  
 McIver, S. K. . . . . 1 1 0  
 McRae, Mrs. D. . . . . 1 1 0  
 McCoy, A. S. . . . . 3 0 0  
 McDonald, Mrs. Lydia . . . . . 25 4 0  
 McCaw Est., S. . . . . 6 4 8  
 McKinnon Est., Angus . . . . . 5 8 9  
 McKay, L. H. & B. . . . . 10 10 0  
 McKay, Miss I. . . . . 15 0 0  
 McDonald Est., Sarah . . . . . 13 3 2

Maddern & Sons . . . . . 1 1 0  
 Millers The Clothiers . . . . . 0 10 6  
 Marks, C. & Co. . . . . 0 10 6  
 Maroney, Frank . . . . . 1 1 0  
 Miller, Mrs. M. . . . . 0 10 0  
 Murphy, Mrs. N. . . . . 0 10 6  
 Myer Woollen Mills Pty. Ltd. . . . . 4 4 0  
 Myer Mill Welfare Assn. . . . . 3 3 0  
 Morsheads Pty. Ltd. . . . . 2 2 0  
 Mann, Misses E. & L. . . . . 0 10 6  
 Moorhouse, S. . . . . 0 10 6  
 Murphy Bros. . . . . 2 2 0  
 Moynihan, J. G. . . . . 0 10 0  
 Morgan, H. R. . . . . 0 10 0  
 Mackie, Mrs. Edith . . . . . 5 0 0  
 Martin, Mrs. Nellie . . . . . 2 2 0  
 Menzies, F. H. . . . . 0 10 0  
 Mark & Philp Pty. Ltd. . . . . 1 1 0  
 Morris, N. E. . . . . 1 0 0  
 Mitchell, Miss A. . . . . 1 0 0  
 Mathews, Mrs. H. . . . . 2 2 0  
 Morris, A. E. . . . . 30 0 0  
 Morgan, Mr. and Mrs. R. G. . . . . 1 1 0  
 Morris, E. P. . . . . 0 10 0  
 Marks Motors Service . . . . . 1 1 0  
 Morton, G. F. . . . . 0 10 6  
 Morrison, Miss Margaret G. . . . . 3 3 0  
 Miller, A. K. . . . . 1 1 0  
 Marshall, Margaret C. . . . . 1 1 0  
 Messer & Opie Pty. Ltd. . . . . 3 3 0  
 Murray, Mrs. W. . . . . 0 10 0  
 Messer, Mr. and Mrs. W. . . . . 5 0 0  
 Martin, Mrs. A. A. . . . . 3 3 0  
 Maxwell, J. . . . . 20 1 0  
 Moran & Cato Pty. Ltd. . . . . 1 1 0  
 Mahy, J. . . . . 0 10 6  
 Morley, I. & R. Pty. Ltd. . . . . 2 2 0  
 Menzies, L. J. . . . . 1 0 0  
 Mott, C. . . . . 1 1 0  
 Martin Stoneware Pipe Ltd. . . . . 3 3 0  
 Mortimer, J. J. . . . . 1 1 0  
 Metz, M. . . . . 2 2 0  
 Miller, Peter . . . . . 1 1 0  
 Maine, W. B. . . . . 1 1 0  
 Martin Bros. . . . . 1 1 0  
 Mooney, C. D. . . . . 1 0 0  
 Mathews, C. L. . . . . 1 1 0  
 Martin, Mrs. A. . . . . 2 2 0  
 Mong, Mrs. A. . . . . 1 1 0  
 Maxwell, J. . . . . 20 0 0  
 Miller Bros. Ironworks Pty. Ltd. . . . . 0 10 6  
 Mackay, Keith . . . . . 1 1 0  
 Mitten, Miss G. E. . . . . 0 10 0  
 Maxwell, Miss Helena . . . . . 95 0 0  
 Michell Est., Francis . . . . . 1 1 8  
 Monk Est., Samuel . . . . . 1 18 2  
 Mooney, Est. J. T. . . . . 0 10 11

Mooney, Mrs. M. . . . . 5 5 0  
 Macdonald, W. B. . . . . 0 10 6

MUNICIPALITIES.

City of Ballarat . . . . . 125 0 0  
 City of Geelong . . . . . 50 0 0  
 City of Geelong West . . . . . 20 0 0  
 City of Warrnambool . . . . . 10 0 0  
 Town of Ararat . . . . . 1 1 0  
 Town of Colac . . . . . 3 3 0  
 Town of Newtown & Chilwell . . . . . 10 0 0  
 Borough of Portland . . . . . 0 10 6  
 Borough of Stawell . . . . . 2 2 0  
 Shire of Ballan . . . . . 5 0 0  
 Shire of Bannockburn . . . . . 2 2 0  
 Shire of Buninyong . . . . . 10 0 0  
 Shire of Colac . . . . . 2 0 0  
 Shire of Creswick . . . . . 3 3 0  
 Shire of Dimboola . . . . . 1 1 0  
 Shire of Kowree . . . . . 1 1 0  
 Shire of Lexton . . . . . 2 2 0  
 Shire of Talbot . . . . . 1 0 0

Nolan, J. . . . . 0 10 0  
 Northy, W. T. . . . . 0 10 0  
 North-Western Fruit Growers Ltd. . . . . 2 2 0  
 Nicholson, J. W. . . . . 0 10 6  
 Nice, Roy . . . . . 0 10 0  
 Nicholson, Arthur W. . . . . 2 2 0  
 Nischelm Bros. . . . . 1 0 0  
 Nichol, T. . . . . 0 10 0  
 Nicholson, A. H. . . . . 1 0 0  
 Nevett, Nevett & Glenn . . . . . 0 10 6  
 Nunn Bros. . . . . 0 10 0  
 Nichol, R. H. . . . . 1 1 0  
 Nightingale Supply Co. (Vic.) Ltd. . . . . 1 1 0  
 Naylor, John . . . . . 15 0 0  
 Nicholas, Mrs. E. M. . . . . 10 0 0

O'Halloran, Miss W. J. . . . . 1 0 0  
 Orr, Mrs. G. E. . . . . 0 10 6  
 Oliver, J. . . . . 1 0 0  
 Oliver & Stevens . . . . . 1 1 0  
 Owen, Jas. F. . . . . 1 1 0  
 Owen, W., Pty. Ltd. . . . . 1 1 0  
 Oxbrow & Co. . . . . 1 1 0  
 Ovo Pty. Ltd. . . . . 0 10 6  
 O'Collins, Most Rev. Dr. J. P. . . . . 1 1 0  
 Opie, Mr. and Mrs. F. . . . . 8 0 0  
 Owen, Mrs. B. . . . . 1 0 0  
 Owen, Mr. and Mrs. C. . . . . 61 0 0  
 Owen, P. . . . . 39 0 0

Pattie & Banes . . . . . 0 10 6  
 Pittard, A. C. . . . . 1 1 0  
 Philp, A. L. . . . . 1 1 0  
 Penney, Jas. & Sons . . . . . 1 1 0  
 Parry, W. J. & Son . . . . . 1 1 0  
 Pizzey, George & Sons . . . . . 1 1 0  
 Perkins & Jenkins . . . . . 0 10 0  
 Potter, J. T. . . . . 2 0 0  
 Presbyterian Girls' Fellowship . . . . . 1 15 0  
 Parents and Friends Church of England  
 Girls' Grammar School . . . . . 1 1 0  
 Plumridge, Eric W. . . . . 1 1 0  
 Parker Bros. . . . . 1 1 0  
 Peters Stores Pty. Ltd. . . . . 1 0 0  
 Parker, W. H. & Co. . . . . 1 0 0  
 Perry, J. A. . . . . 1 1 0  
 Powell, W. . . . . 1 1 0  
 Pickford, A. . . . . 1 1 0  
 Podger, Dr. D. P. . . . . 0 10 6

Patter, William	1	1	0
Pennant, C. W.	1	1	0
Phillips, Mrs. W. M.	2	0	0
Pittard, Hon. A. J.	1	1	0
Palmer, A. M. & Co.	1	1	0
Parrot Bros.	1	0	0
Punshon & Wilkie	1	1	0
Pratt, David & Sons	1	1	0
Philmeres' Frock Salon	1	1	0
Patten, Mrs.	2	2	0
Pilgrim, Mrs. S. E.	1	1	0
Powell, G.	0	10	0
Parker & Chamberlain	0	10	6
Pulbrook, G. D.	2	2	0
Page, F.	0	10	0
Pascoe, R.	1	0	0
Pittard Bros.	0	10	6
Preen, Betty.	0	10	6
Follock, A.	0	10	0
Pearson, H.	0	10	0
Price, Mr. and Mrs. K. H.	2	2	0
Paterson, Laing & Bruce Ltd.	1	1	0
Pierce, H. R.	1	1	0
Poulton, A.	1	0	0
Pryor, Dr. W. A.	0	10	6
Price, John	1	1	0
Plummen, J. L.	1	1	0
Pearce, Dr. Harrie	0	10	6
Parkinson, Rosetta	1	0	0
Pritchard, Miss A.	5	0	0
Powling, F. C.	45	0	0
Pyke, Miss	10	0	0

Queen's Church of England Girls' Grammar School	0	10	0
Quirk, Jim	0	10	0
Quayle, Mr. and Mrs. A.	1	1	0
Quinert, W.	5	0	0
Quinert, G.	1	0	0
Quinert Est., William	1	10	0

Rowland, A. J.	1	1	0
Richards, P. S. & G. S.	2	2	0
Robinson, D. Pty. Ltd.	2	2	0
Russo, Miss Connie	1	1	0
Reed, Roy	0	10	6
Redan Under 16 Football Club	0	10	6
Robinson Bros.	0	10	0
Rodda, W. J. Pty. Ltd.	1	1	0
Redman, George	0	10	0
Rice, J. W.	0	10	6
Ritchie, J. G.	2	2	0
Ryan, W. E.	0	10	0
Roberts, Drs. G. and Davies, E.	0	10	6
Roddis, W. C. & Co.	1	1	0
Ryan, Rev. Father N.	0	10	6
Re Bros.	0	10	6
Richards, W. J.	0	10	0
Rizzoli, L. J.	1	1	0
Famsay, R. H.	1	1	0
Richards, Mrs. L.	2	2	0
Russell, Phillip	5	5	0
Riddell, W. S.	0	10	0
Rowen, W. J. & Co.	1	1	0
Rex Cafe	0	10	0
Robinson, E. A.	1	1	0
Ritchie, Wm. Pty. Ltd.	1	1	0
Ronaldson Bros. & Tippett	1	1	0
Reeve, E. J.	1	1	0
Robinson Pros.	1	1	0
Ryall, H. R. & Co.	2	2	0
Roberts, G. L.	0	10	0

Roberts, W.	0	10	0
Rowe, Chas. & Son	1	1	0
Richardson Mrs. H.	1	1	0
Rinaldi, Mrs. H.	0	10	0
Redan Old Scholars' Assn.	1	1	0
Roger, David Pty. Ltd.	1	1	0
Rowe, J. C.	3	3	0
Ronaldson Bros. & Tippett Pty. Ltd. Social Club	2	0	0
Rehfish & Co. Pty. Ltd.	0	10	0
Roberts, Mr. & Mrs. E. J.	0	10	6
Rodda, Jack	1	1	0
Reams, H. W.	0	10	6
Rae, J.	1	0	0
Rowlands Pty. Ltd.	1	1	0
Robson, E. W.	1	1	0
Ritchie, Robert	1	1	0
Richardson, Dr. C. E.	1	1	0
Rasmussen, Miss C.	5	3	0
Richardson, T. B.	4	0	0
Rust, C. C.	5	0	0
Ralph, Mrs. Isabella	73	15	0
Rowe, R. J. A.	23	2	0
Roughton, Albert	50	0	0
Robertson, A. S.	5	0	0
Rosman, Mrs.	5	0	0
Richards, A. H.	20	0	0
Rock Est., John	4	4	0
Rapkin, H.	1	10	0
Rothwell, Miss C.	10	0	0
Robson, Mrs. E. J.	10	0	0
Rosenthal, D. B.	2	2	0
Robinson, Mrs. A.	1	10	0
Ray, W.	2	0	0
Ritchie, Robert	10	0	0
Robinson, J. D.	5	5	0
Russell, Exors. of late George	5	5	0
Reid, Est. John	1	1	0
R.S.S. & A.I.L.A. (Sebastopol Sub Branch)	2	2	0
Spring, Dr. W. A.	1	1	0
Swan, J.	0	10	0
Smearon Presbyterian Church	1	0	0
Shell Co. of Aust. Ltd.	1	1	0
Smith, Rev. Father	0	10	0
Seamen's Mission, Ballarat Branch	0	10	6
Stevenson & Taylor	1	1	0
Soss, Dr. W.	1	1	0
Steele, T.	1	1	0
Selkirk, James, Pty. Ltd.	0	10	6
Sang, Joseph E.	1	1	0
Stevenson, P. S.	1	1	0
Sim, Robert & Co.	1	1	0
Sing, J.	0	10	0
Slattery, J. P.	1	1	0
Soyers, A.	1	1	0
Slattery, Miss M.	0	10	0
Slattery, Miss A.	0	10	0
Strickland, E. J. & Sons	1	1	0
Smith, Herbert E., Pty. Ltd.	1	1	0
Sterling, J.	1	1	0
Stone's Drapery Store	0	10	6
Sproull, A.	0	10	0
Sprague, Mrs. G.	0	10	0
Senior, Mary	5	0	0
Smith, James, Pty. Ltd.	1	1	0
Stevenson, D.	0	10	0
Symons, H. J., Pty. Ltd.	1	1	0
Salter, Dr. A. C. H.	1	1	0
Sykes, P. A.	0	10	6
Swallow & Ariel Ltd.	1	1	0

Shepperbottom, J.	0	10	0	Thompson, Mark and Catherine	2	10	0
Stewart, R. I. L.	1	0	0	Tonner, Ida	18	0	0
Spiers, Austin	1	1	0	Tamplin Est., Andrew	2	16	6
Stohr, A. E.	1	1	0	Turner Est., Samuel	1	4	1
Scott, Mr. and Mrs. G. L.	1	1	0	Troup Est., Mary	30	0	0
Smith, L. A.	0	10	6				
Smith, A. E.	0	10	0	Urch, Chas.	0	10	0
Selwyn Scott, F. E.	1	1	0	Ubergang, A. W.	2	2	0
Saph, A. S.	1	1	0				
Stansfield & Smith Pty. Ltd.	2	2	0	Vernon, Mrs. L. J.	0	10	0
Straughan, Dr. J. C.	0	10	6	Vawdrey, E. G.	0	10	6
Sunnyside Woollen Mill Social and Welfare Club	2	2	0	Victorian Inland Meat Authority	0	10	6
Schenk, Frank	1	0	0	Valentine, S. G., Pty. Ltd.	1	1	0
Simpson, Ken.	0	10	0	Valpied, W.	1	1	0
Sellwood, Miss A.	0	10	0	Vickery, J. S. & Son Pty. Ltd.	1	1	0
Smail, J. J.	1	1	0	Vaughan, Chas. & Co.	1	1	0
Safford, S.	0	10	0	Vaughan, William	1	0	0
Sarah, Mrs. Les.	0	10	0	Vikings Club	1	1	0
Sharkey, M. B.	1	1	0	Videan, Louisa	10	0	0
Scott Bros.	1	1	0				
Skelton, E. A.	0	10	0	Wain, A. S.	0	10	6
Strafford, C.	5	5	0	White, H. M.	5	5	0
Sykes, O. J.	1	0	0	Walker, John	2	0	0
Stewart Est., Elizabeth	24	3	1	Walker, Stanley	1	1	0
Sim, T. Kinsley	1	1	0	Walters, Mrs. W.	0	10	6
Sandlant, G.	6	0	0	White, H.	0	10	0
Skerritt, George	100	0	0	White, W. R.	0	10	0
Snell, Miss E. G.	25	0	0	Wimmera Flour Mill Co. Pty. Ltd.	1	0	0
Sultons Pty. Ltd.	1	1	0	White, W. W.	0	10	0
Spacey, Mr.	1	12	0	Walker, Miss L. P.	1	1	0
Stevens, Mrs. E.	1	0	0	Wotherspoon, J. R. & Co.	0	10	6
Salgrem, G. J. & B.	1	1	0	Williams, A. A.	1	1	0
Stewart, George	1	1	0	Weickhardt, F. W.	1	1	0
				Webb, Stan.	1	1	0
Taylor & Taylor	1	1	0	White, A. C.	0	10	6
Tweedie, H. F.	0	10	0	Williams, R.	0	10	6
Topper, George	5	0	0	Whiffen, J. H.	0	10	0
Trafford, E. H.	0	10	6	Westcott, C. W. V.	1	1	0
Tardrew, J. W.	0	10	0	Woodward, A. & Sons	1	0	0
Tippett, A. R. & Sons	1	10	0	Williams, Miss G.	0	10	0
Todd, E. H.	1	1	0	Wills, Thos.	2	0	0
Temby, A. J.	1	1	0	Waldron, W. H.	2	2	0
Thege, W. & Sons	1	1	0	Wilson, P. L.	0	10	0
Toose, Misses E. & J.	1	0	0	Weir, S. J.	0	10	6
Taylor, Ralph	0	10	6	Wilson, Miss A.	1	0	0
Thomas, Mrs. A. L.	0	10	0	Wilkinson, Jack	0	10	6
Toshack, H. J.	5	0	0	Wilson, Dr. S. A.	1	1	0
Tunbridge, R. & Sons Pty. Ltd.	1	1	0	Wallace, Millbrook & Buninyong But- ter Co. Ltd.	1	1	0
Titheridge & Growcott	1	1	0	Wastell & Cutter	2	2	0
Trahar Bros.	1	1	0	White, C.	1	1	0
Trades and Labour Council, Ballarat	1	1	0	Winter, Mrs. M. A.	1	1	0
Tucker, S. L.	0	10	0	White, R., Pty. Ltd.	1	1	0
Iyers, Mrs. J.	2	2	0	Waller & Chester	1	1	0
Tinney, Mrs. A.	0	10	6	Wills, W. D. & H. O. (Aust.) Ltd.	3	3	0
Troon, H.	1	1	0	Waight, E. D.	2	2	0
Tulloch, C. N.	2	2	0	Whittenbury, Mrs. N. E.	0	10	0
Tinney Bros. & Hanrahan	1	1	0	Watson, J. J.	1	1	0
Taylor, M. G. Car Sales Pty. Ltd.	0	10	6	Williams, C.	0	10	0
Thomas, Evan	1	0	0	Weilandt, J. H.	0	10	6
Taylor, Kevin R.	2	2	0	White, Mrs. W. W.	0	10	0
Trotman & Beames	1	1	0	Williams, Mrs. M.	1	1	0
Turner, R.	0	10	0	Wilson-Smith, Mr.	0	10	0
Turner, Gordon	1	0	0	Williams The Shoemen Pty. Ltd.	1	1	0
Thornton, P.	0	10	0	Wilkie, Bert	1	1	0
Taylor, J.	0	10	0	Wylie, Mrs. A.	1	1	0
Thiessen & Irvine	1	1	0	Wilkinson, G. R.	1	1	0
Thomas' Supply Stores	2	2	0	Wilson, M. S.	1	1	0
Thomas, W. C. & Sons Pty. Ltd.	3	3	0	White, H.	0	10	0
Tregoning, Harry, Pty. Ltd.	5	5	0	Wendourse Rowing Club	1	1	0
				Wilson, R.	0	10	0
				Webb, L.	0	10	0

Wyres Bros. . . . .	0 10 6	Wrigley, Harold . . . . .	50 0 0
Woolworths Ltd. . . . .	0 10 6	Werner, Mrs. Agnes . . . . .	20 0 0
Wendouree Sports Club . . . . .	2 2 0	Walters Est., George . . . . .	3 11 8
White, George . . . . .	1 1 0	Walker, C. J. B. . . . .	21 0 0
Wardrop My Tailor . . . . .	1 1 0	Welch, L. M. . . . .	10 0 0
Western Fruit & Produce Co. Pty. Ltd. . . . .	0 10 6	Young, C. A. . . . .	1 1 0
Wilkie, A. & Sons . . . . .	1 1 0	Young, F. H. . . . .	1 0 0
Ware, Mr. and Mrs. Len. . . . .	1 1 0	Young & Co. . . . .	1 1 0
Waller, Les. . . . .	1 1 0	Young, J. J. . . . .	5 5 0
Whykes, H. L. . . . .	1 1 0	Young, Mr. & Mrs. R. G. . . . .	0 10 6
Walker, O. . . . .	1 0 0	Young, Keith . . . . .	1 1 0
White, Joe & Co. Pty. Ltd. . . . .	65 15 0	Zachariah, Miss M. . . . .	2 0 0
Wilson, G. A. . . . .	35 0 0	Zillas, L. . . . .	0 10 6
Watson, David . . . . .	2 15 0		
Williams, Miss Annie . . . . .	1 0 0		
Williamson, D. A. . . . .	10 0 0		



THE HON. A. J. PITTARD, C.B.E.,

Elected to the Board 1907.

President 1914.

Member of the Charities Board of Victoria during the  
whole period of its existence, 1923-1948.





CHIROPODY.



INFRA RED RAY TREATMENT.

## DONATIONS IN KIND.

- Mr. G. Pearpoint, dressed lambs.  
 Mr. Strain, fruit.  
 Mr. G. White, plants.  
 Mrs. Schow, wheel chair.  
 Mrs. Ellis, clothing.  
 Mr. H. Dunstan, wheel chair.  
 Mr. A. Munro, clothing.  
 Anonymous, pipes, hats, furniture, clothing, spectacles, footwear, bowls, fruit, Bibles.  
 Mr. J. Heinz, spectacles.  
 Mr. S. Walker, clothing.  
 Mr. R. Nichol, clothing.  
 Mrs. A. Mason, clothing.  
 Mr. W. Sutherland, spectacles and cases.  
 Mrs. E. Daly, clothing.  
 Mrs. D. Izard, fruit.  
 Miss V. Stewart, clothing.  
 Herbert Adams Pty. Ltd., cake.  
 Pleasant Street State School, Ballarat, magazines.  
 Mrs. Kerchel, magazines, clothing and footwear.  
 Mr. Tonkin, spectacles.  
 Rev. H. V. Jenkins, clothing.  
 W. Dick & Sons, provisions.  
 Neil Street Methodist Church Trust, Ballarat, clothing.  
 Berry, Anderson & Co., magazines.  
 Mr. J. Driscoll, books, magazines and hats.  
 Mr. A. D. Nichol, magazines.  
 Mr. Monaghan, magazines.  
 Mr. R. McGregor, sandwich cutters.  
 Mr. T. G. Faulk, furniture.  
 Miss Restarick, magazines.  
 Mr. G. Barnett, vegetables.  
 City Bowling Club, Ballarat, provisions.  
 Miss Finn, magazines.  
 Mr. P. Farrow, magazines.  
 Miss A. Tyson, clothing.  
 Mr. W. Lucas, clothing.  
 Mr. A. McDonald, clothing and wheel chair.  
 Miss M. Cassidy, clothing.  
 Miss A. Guy, clothing.  
 Mr. K. Mulholland, clothing.  
 Mrs. George, clothing and magazines.  
 Mr. E. Rowlands, meat.  
 Miss F. Sage, hats.  
 Mr. Sheffield, magazines.  
 The Public Trustee, clothing.  
 Mr. Joseph Way, clothing.  
 Estate C. A. Martin, Exors. of, clothing.  
 Mrs. Whykes, magazines.  
 Mrs. J. Thomas, footwear.  
 State Relief Committee, potatoes, onions and fruit.  
 Mrs. Elliott, magazines.  
 Mr. Roy Reed, fruit.  
 Miss E. Dale, magazines.  
 Miss Jacobi, magazines.  
 Mrs. R. Whittle, magazines.  
 Miss Wright, magazines.  
 Mr. L. N. Welch, clothing and crutches.  
 Mr. A. McIver, clothing.  
 Mr. S. Westwood, clothing.  
 Mr. James Lalor, clothing.  
 Mr. C. A. Heighway, magazines.  
 Mrs. Boyack, clothing.  
 Mr. N. Spielvogel, magazines.  
 Mr. Jacques, magazines.  
 Mr. G. A. Lemke, bowling mats.  
 Mrs. Speed, clothing.  
 Mr. Eric Newton, potatoes.  
 Mr. L. H. Finch, magazines.  
 Mrs. G. Welsh, clothing.  
 Mrs. Elliott, clothing.  
 Mrs. King, clothing.  
 Mr. Membrey, clothing and magazines.  
 Mrs. Harden, magazines.  
 Mr. A. C. Christie, books.  
 Mr. G. Dickson, clothing.  
 Mr. Leith, magazines.  
 Mr. H. R. Parsons, clothing.  
 Mr. W. Quinert, clothing and magazines.  
 Mrs. M. White, clothing.  
 Mrs. K. Price, clothing.  
 Mrs. K. Ward, clothing.  
 Mr. W. R. M. Lewis, clothing.  
 Mr. D. Stenning, magazines.  
 Mr. R. Blair, eggs and cakes.  
 Mrs. Spiers, magazines.  
 Mr. R. Dunstan, clothing.  
 Dr. W. A. Capell, magazines.  
 Mr. Vickers, magazines.  
 Mr. H. Haymes, drums.  
 Mr. B. Rowe, magazines.  
 Mr. Preston, magazines.  
 Mr. J. Belcher, flowers.  
 Woolworths Ltd., Christmas decorations.  
 Mr. W. Balfour, clothing.  
 Mrs. McIntosh, clothing.  
 Mr. G. Nelson, magazines.  
 Mrs. Osbourne, magazines.  
 Mrs. Snow, magazines and playing cards.  
 Mrs. A. Dent, magazines.  
 Mrs. Gladman, magazines.  
 Mr. D. Berlyn, magazines.  
 Mr. Murphy, books.  
 Mrs. Wearne, clothing.  
 Mrs. E. McDonald, clothing.  
 Mr. Thos. Ritchie, clothing.  
 Mrs. M. Taylor, clothing.  
 Mr. J. Tregoe, clothing.  
 Mr. R. Kallawik, clothing.  
 Mr. R. Gallagher, pipes.  
 J. C. Foord & Co. Pty. Ltd., provisions.  
 Mr. E. G. Eldridge, clothing.  
 Miss Wright, magazines.  
 Mrs. R. O. Mallett, spectacles.  
 Mr. E. N. Kent, vegetables.  
 Mrs. H. Osmond, magazines.  
 Mrs. Dunn, magazines.  
 Mrs. Ridge, magazines.  
 Mrs. A. Monk, clothing.  
 Miss M. Joyce, clothing.  
 Mr. E. G. Pollard, clothing.  
 John Macleod & Co. Pty. Ltd., confectionery.  
 Ballarat Brewing Co. Ltd., beer.  
 Mr. W. Tair, dressed pig.  
 Mr. Russell, confectionery.  
 Pleasant Street Methodist Sunday School, Ballarat, provisions.  
 Mr. Davidson, vegetables.  
 J. F. Bennett & Co., fruit.  
 Ballarat Meat Stores, meat.  
 Mr. E. Plumridge, cakes.  
 City Bowling Club, Ballarat, provisions.  
 Rev. J. A. Mosscrip, magazines.  
 Mrs. Cowley, clothing.  
 Mr. A. G. E. Bush, magazines and medicine glasses.

DONATIONS IN KIND—continued

- Miss Marion Gronn, magazines.  
 Mr. C. N. Tulloch, books.  
 Ballarat Orphanage, vegetables.  
 Mr. J. Gibbs, clothing.  
 Mrs. J. Mortimer, clothing.  
 Mrs. O'Dea, magazines.  
 Mr. H. Johnston, clothing.  
 Mrs. Ridge, magazines.  
 Mrs. M. A. Winter, clothing.  
 Mr. G. Hanrahan, clothing and footwear.  
 Mr. A. McKinnon, clothing.  
 Mr. Caddy, footwear.  
 Mr. A. H. Sanders, clothing.  
 Mrs. Grady, books.  
 Mr. G. Garrett, fruit.  
 George Crocker Pty. Ltd., haberdashery.  
 Miss A. Flett, clothing.  
 Mrs. E. Newman, magazines.  
 Mrs. Lederman, spectacles.  
 Mr. H. Allen, spectacles.  
 Miss Drape, fruit.  
 Mr. H. K. Parker, clothing.  
 Mrs. H. Grinter, clothing.  
 Mr. Jackson, magazines.  
 Mr. H. J. McLean, clothing.  
 Ebenezer Presbyterian Church, Ballarat, fruit.  
 Mrs. V. M. Aitchison, clothing.  
 Mrs. E. Wilkinson, books.  
 York Street Church of Christ, Ballarat, fruit and vegetables.  
 Ballarat City Fire Brigade, provisions.  
 Mrs. R. Anderson, clothing.  
 Mr. R. Sudholz, clothing.  
 Mrs. S. Mitchell, clothing.  
 Mr. F. Mitchell, clothing.  
 Mrs. Briant, playing cards.  
 Mr. S. A. Walter, clothing.  
 Presbyterian Church, Smeaton, provisions, fruit and vegetables.  
 Mrs. E. M. Taylor, clothing.  
 Ballarat Trustees, Executors & Agency Co. Ltd., clothing.  
 Miss M. Ryan, clothing.  
 Miss McKay, clothing and footwear.  
 Mr. G. S. Richards, magazines.  
 Mrs. Smith, clothing.  
 Mr. J. T. Orchard, clothing.  
 Mrs. Kilgour, books.  
 St. Andrew's Presbyterian Church, Donald, provisions, vegetables and fruit.  
 Mr. A. V. Curnow, clothing.  
 Mr. Bannon, magazines.  
 Mr. H. Gribble, magazines.  
 Mr. Clarke, magazines.  
 Mrs. McKay, clothing.  
 Sturt Masonic Lodge, flowers.  
 Miss Florence A. Graham, piano.  
 Mr. G. A. Simcocks, clothing.  
 Mr. R. F. Dyson, fruit.  
 Mr. Rogers, spectacles.
- Miss Sutton, footwear.  
 Mrs. Quick, magazines.  
 Miss Walker, clothing.  
 Mr. Linaker, magazines.  
 Miss Pearson, magazines.  
 Miss F. Nicholson, clothing.  
 Mr. G. R. Wilkinson, magazines.  
 Pleasant Street Methodist Church Endeavour, Ballarat, magazines.  
 Miss Johnson, magazines and clothing.  
 Mr. J. A. Wilkie, clothing.  
 Mrs. Parker, clothing.  
 Mr. Tapscott, magazines.  
 Mrs. Hook, books.  
 Miss Walker, clothing.  
 Mr. A. E. Lee, fruit.  
 Mr. G. Grant, clothing.  
 Mrs. Brew, magazines.  
 Miss Knight, magazines.  
 Mrs. Marston, clothing.  
 Gullan's Newsagency, Ballarat, magazines.  
 Berry, Anderson & Co., magazines.  
 Miss I. McKay, clothing.  
 Mr. C. Sykes, clothing.  
 Mr. Avent, magazines.  
 Mr. W. R. Brown, flowers.  
 Mr. G. Sandlant, clothing.  
 Mrs. A. G. Western, clothing.  
 St. Andrew's Presbyterian Church, Ballarat, fruit and vegetables.  
 Mr. W. C. Johns, magazines.  
 Mrs. J. T. Mooney, clothing.  
 Mrs. Blyth, magazines.  
 Mrs. J. Snell and Miss Rohn, spectacles.  
 Mr. Mangan, fruit.  
 Mr. Collins, magazines.  
 Mrs. J. Binns, vegetables.  
 Mr. Graves, magazines.  
 Mrs. J. Robertson, clothing.  
 Mr. D. McCalman, clothing.  
 Mr. D. Kerr, clothing.  
 Quayle & Hutton, vegetables.  
 Mrs. Allen, magazines.  
 Mrs. Mouser, clothing.  
 Mr. A. E. George, clothing.  
 Mr. J. Mullins, clothing.  
 The South Geelong Methodist Ladies' Guild, handkerchiefs.  
 Miss O'Donnell, magazines.  
 Mrs. T. R. Odum, music.  
 Miss McCurdy, books.  
 Mr. Clark, magazines.  
 Mr. E. H. Todd, magazines.  
 Miss Coulter, playing cards.  
 Mrs. A. Preston, clothing.  
 Mr. J. Veal, clothing.  
 Mr. B. Dunstan, clothing.  
 Mr. R. Gangell, clothing.  
 Miss Goldie, clothing.  
 Mrs. M. Quinlivan, clothing.

## DONATIONS TO EGG APPEAL, 1948.

Middle Creek State School . . . . .	4 doz. and 6	Queen St. State School . . . . .	19 doz. and 6
High School, Ballarat . . . . .	60 doz	Girls' School, Hopetoun St., Ballarat . . . . .	35 doz.
Grenville State School . . . . .	19 doz. and 6	Linton State School . . . . .	10 doz.
Mannibadar State School . . . . .	9 doz. and 4	Mt. Pleasant State School . . . . .	18 doz. and 3
Invermay State School . . . . .	34 doz. and 3	Ballarat College . . . . .	27 doz.
Mollongghip State School . . . . .	8 doz.	Humffray St. State School . . . . .	25 doz. and 6
Cambrian Hill State School . . . . .	14 doz. and 6	Middle Creek State School . . . . .	12 doz. and 6
Napoleons State School . . . . .	17 doz. and 8	Queen's Church of England Girls' Grammar School . . . . .	29 doz. and 11
M. Magill . . . . .	2 doz	Queen St. State School . . . . .	4 doz
Dana St. State School . . . . .	30 doz	Alfredton State School . . . . .	10 doz. and 6
Little Bendigo State School . . . . .	10 doz.	Tourello State School . . . . .	13 doz. and 6
Black Hill State School . . . . .	9 doz. and 4	Mr. Adair . . . . .	4 doz. and 6
Macarthur St. State School . . . . .	19 doz.	Addington State School . . . . .	11 doz
N. Smithson . . . . .	3 doz. and 6	Mrs. Murray . . . . .	2 doz. and 6
J. Stabernack . . . . .	5 doz. and 6	Glendaruel State School . . . . .	7 doz.
Ercildoune State School . . . . .	25 doz. and 6	Werneth State School . . . . .	8 doz. and 4
Lexton State School . . . . .	22 doz.	Elaine State School . . . . .	7 doz.
Rocklyn State School . . . . .	4 doz. and 6	Bacchus Marsh State School . . . . .	65 doz
Haddon State School . . . . .	15 doz.	Waterloo Flat State School . . . . .	26 doz
Coghill's Creek State School . . . . .	4 doz. and 6	Mr. F. T. Davies . . . . .	30 doz
Anonymous Donors . . . . .	4 doz.		
Pleasant St. State School . . . . .	80 doz.		

TOTAL . . . . . 769 doz. and 7



Children from one of our Schools personally delivering Eggs.

## LIFE GOVERNORS

Anderson, Thomas	Hitchirs, Mrs. M. A.	Philp, Frederick N.
Bailey, L. H.	Hynam, F.	Pinney, A. E.
Barber, R. J.	Hall, Miss Ellen	Pittard, Mrs. A. J.
Barry, J.	Hall, Miss M. G.	Proven, W.
Baxter, J. P. H.	Hughes, Mrs. E.	Powling, Frank C.
Baxter, Mrs. Hilda G.	John, S.	Rowe, Mrs. W. H.
Beggs, S. J.	Johns, J. C.	Rowe, R. A.
Bennett, H. P.	Jones, Stan.	Ratcliffe, Capt. H. J.
Bilston, C.	John, Mrs. E.	Richards, P. S.
Blinkhorn, A.	Kenny, W. J.	Richards, G. S.
Bosher, C.	Kirk, A.	Reynolds, W.
Brady, C. R.	King, W.	Ronaldson, R. B.
Baglin, K. B.	Kent, Miss M. C.	Roughton, A. J.
Baker, Mrs. E.	Keith, J.	Rodda, R.
Benson, Miss Muriel	Kellam, Eric A.	Robinson, R.
Carbury, E.	Lanigan, E.	Ryan, M. J.
Cochrane, D.	Laurens, Geo.	Roughton, Elliott
Collins, G.	Lazarus, Ruby	Richards, A. H.
Cormack, Mrs. Ada	Levin, Mrs. Laura	Rowe, R. J. A.
Cowley, R.	Lloyd, J.	Rees, Mrs. Rosalie
Curnow, V. T.	Lancaster, Mrs. Caroline	Saunders, Theo.
Douglas, Dr. J. C.	Lancaster, John W.	Scullin, J. H.
Danaher, H.	Lockhart, Alexandor Joseph	Skerritt, Geo.
Davies, Mrs. M. A.	Lockhart, William Francis	Spring, Dr. W. A.
Davey, J. H.	Lake, Mrs. E. A.	Suffren, J. B.
Degan, M.	Madsen, Rev. A.	Sullivan, D.
Dower, Mrs. H. A.	Malyon, Mrs. L.	Snell, Miss E. G.
Doolan, J.	Morrow, H. G.	Thomas, Mrs. W. C.
Dodd, J. T.	Marx, A.	Thompson, W.
Downer, John	Mawby, V.	Todd, E. H.
Dickins, S. E.	Miller, Mrs. F. D. P.	Tompkins, Robina
Ellis, R.	Mong, W.	Toop, T. B.
Evans, C.	Morris, T. A.	Torney, G.
Eldridge, Eric G.	Morris, T.	Torney, R.
Food, Mrs. Cath.	Murphy, J.	Tinworth, Edward
Foulkes, R.	Maxwell, J.	Vickery, Geo. S.
Furlong, Mrs. V. M.	Maxwell, Helena Ann	Wallace, Dr. F. H.
Fraser, A. C.	Maxwell, J. Y. C.	Wallace, R. V.
Garrett, R.	Morris, A. E.	Wilson, T. P.
Gough, S.	Mackay, Keith	Wilson, Dr. S. A.
Graham, I. G.	McDonald, Stuart M.	Walker, A.
Graham, Florence Adelaide	McKenzie, R. L.	Walters, J. B.
Gangeli, R.	McKenzie, H.	Webster, R.
Haines, R.	McIver, Colin B.	Welsh, Wm.
Hamilton, K. L.	McDonald, A.	Westcott, C. W.
Hammer, Mrs. G. H.	McDonald, Mrs. Lydia	Whittle, R.
Harris, H.	Nelson, C. H.	Williams, M.
Harty, J.	Owen, Mrs. C.	Williams, A.
Heathershaw, R. S.	Patterson, J.	Wilson, A.
Hugo, H.	Pearson, S. W. H.	Wrigley, Harold
		Walker, C. J. B.
		Werner, Mrs. Agnes

N.B.—An Obituary List of Life Governors is filed at the Institution, and the Manager will be obliged if notification is given him of the names of deceased included in the above list.



TWO BROTHERS AND SISTER—All Inmates of the Home.



HUSBAND AND WIFE—Both Inmates.



The President (Cr. Arthur W. Nicholson) and Mrs. Nicholson conveying greetings to an old lady on her 101st birthday



Preparing insulin injection for one of our 40 diabetic patients.

## THE QUEEN ELIZABETH BENEVOLENT HOME LADIES' AUXILIARY.

---

### ANNUAL REPORT FOR YEAR 1948-49.

To our Members and Friends.

Ladies and Gentlemen,—

I have the honour to present the Annual Report covering the activities of the Auxiliary for the past year.

**MEMBERS :** During the year several new members have been welcomed to our Auxiliary and have proved themselves most helpful. Unfortunately, there have been several resignations too—two of which being our very old members, Mrs. Rees and Mrs. Tompkins, who for so long have conducted the Old Folks' Sing Song. We do regret their resignations, and thank them on behalf of the Old People too for their goodness to us all for so many years of service. To Mrs. Davies, who had to resign because of ill-health, we thank and sincerely wish her good health in the future.

**EFFORTS :** One large Bridge Party was held in the Amenities Hall at the Home during the year—it was most successful. Also an Opportunity Shop was held which brought a little more towards our funds. We had a stall in Sturt Street to assist the Travellers' Day Appeal; this also proved very popular.

**THE CHRISTMAS FETE** was held in the Lederman Hall on December 4th. It was opened by the Mayoress, Mrs. F. Wray. This was a very bright afternoon, with vocal items and Mrs. Rooney with her South Street team. The proceeds and donations helped us considerably with the Old Folks' Christmas Gifts.

**THE CHRISTMAS TREE** was held on December 16th. This went well, and thanks to Matron and her helpers it was very well organised. The inmates received an assortment of gifts in their very attractive carton bags. We have to thank the Red Cross for same. There were three Fathers Christmas who did very good work, for which we thank them, Mr. Keith having completed his twentieth year doing this to entertain the Old People. There was a concert in the Hall with Mrs. Rees conducting for the last time. Suitable presentations were made to them both from the Auxiliary and the dear Old People, all being sad to lose Mrs. Rees, although the whole evening was proof of the inmates' gratitude for the little we can do to make their lives a little brighter.

**THE ANNUAL PICNIC :** On February 22nd we started our year's activities by taking the patients out. Unfortunately, we struck a very unpleasant day. We had to change our plans from the usual Lake Picnic to a bus drive to Buninyong and then back to St. Peter's Hall for a concert and tea. It was at this gathering the Old Folks farewelled Mrs. Tompkins, their pianiste for so many years. Those unable to attend the picnic were given a special tea in the wards.

**SPECIAL TEAS :** Several special teas have been provided. At Christmas, Easter and King's Birthday and the Birth of Princess Elizabeth's son Charles.

**ENTERTAINMENT :** We were most fortunate in securing the honorary services of Mrs. Elsie Morison and Mrs. Flack to conduct our Sing Songs, which are now held fortnightly instead of monthly as before. Mr. Percy Campbell is their talented accompanist. We are greatly indebted to these very kindly people.



FINANCE: It will be noticed by the balance sheet to be submitted at this meeting that our finances are most satisfactory, £50 being put to our trust account.

APPRECIATION: In conclusion, I desire to thank most cordially all contributors to our funds. The Christmas Cheer and Tobacco Fund is the direct result of their generosity. We feel sure that this generosity will continue and thus bring joy to so many old people.

I should like to express my sincere appreciation to the Ladies of the Auxiliary who have helped me so much, to Mr. Mackay, Matron and Staff for their always ready support which has assisted me tremendously, to our Auditor and to the Press for their assistance and co-operation, I convey our real appreciation.

D. CUTTER, Hon. Secretary.

August 15, 1949.

ADDENDUM: I wish to express my grateful thanks and appreciation to the members of the Auxiliary for their loyal support throughout the year, to Mrs. Cutter for her efficient work as Secretary, to Mrs. Spiers for her splendid services as Treasurer, and to Mr. Mackay, Matron and all members of the Office and Staff for their willing co-operation in all our efforts.

ELAINE RICHARDS, President.



THE CHAPEL  
(Furnished by the Ladies' Auxiliary)

THE LADIES' AUXILIARY OF THE QUEEN ELIZABETH BENEVOLENT HOME, BALLARAT.

STATEMENT OF RECEIPTS AND EXPENDITURE FOR NINE MONTHS ENDED MARCH 31, 1949

RECEIPTS.		EXPENDITURE.	
To Balance at 30th June, 1948	£22 10 7	By Printing, Stationery and Advertising	£5 8 2
Members' Fees	6 0 0	Tobacco, Christmas Cheer Fund	87 17 2
Sundry Donations	15 2 0	Materials and Provisions	79 19 5
Proceeds from Functions, etc.	114 7 7	Rent	2 3 6
Tobacco and Christmas Cheer Fund	117 7 5	Cole Memorial Fund	10 0 0
Collections—A/c. Mrs. Cole Memorial Fund	1 10 0	Donation to Ballarat Orphanage Appeal	3 3 0
Proceeds of War Savings Certificates	7 0 0	Sundries	16 14 3
Sundries	1 18 0	Transfer to Trust Fund	50 0 0
		Balance at State Savings Bank	24 10 1
	£279 15 7		£279 15 7

BALANCE SHEET AT MARCH 31, 1949.

LIABILITIES.		ASSETS.	
Surplus of Assets over Liabilities	£283 6 1	Cash at Savings Bank	£24 10 1
		Funds held in Trust A/c.	£204 16 0
		Add Deposits	50 0 0
		War Savings Certificates	254 16 0
	£283 6 1		4 0 0
			£283 6 1

R. V. SPIERS,  
Hon. Treasurer.

Examined and found correct.  
J. E. F. HEWITT, A.I.C.A., Hon. Auditor.  
April 23, 1949.



LEAVING FOR PICNIC ARRANGED BY THE LADIES' AUXILIARY.



A STEAMER RIDE IS A FEATURE AT EVERY PICNIC.

Wholly Set-up and Printed by  
**WALLER & CHESTER**  
34 Armstrong St. N. Bariat