





**Wimmera Base Hospital**

**99th Annual Report**



# OFFICE BEARERS AND COMMITTEE 1972-73

MR. A. A. JOHNS (President)  
DR. R. E. ABUD  
MR. R. R. BURGESS  
MR. T. E. CONROY  
MR. M. W. CUDDIHY (Appointed 3-5-1973)  
MR. E. L. A. ELDRIDGE  
MR. W. F. HUMPHREYS (Senior Vice-President)  
MR. R. G. LIDDY  
MR. K. H. LOVETT (Treasurer and Govt. Nominee)  
MR. D. J. McFARLANE (Junior Vice-President)  
DR. M. M. O'BRIEN  
MR. H. J. RANDALL  
MR. R. W. SHEPHERD  
MISS M. A. R. SMITH  
MR. R. B. STEWART  
DR. R. W. WEBSTER (Resigned 24-11-1972)

## **Auditors**

GREEN, TAYLOR AND GREENALL  
CHARTERED ACCOUNTANTS

## **Honorary Solicitors**

POWER & BENNETT

## **Bankers**

COMMERCIAL BANKING COMPANY OF SYDNEY

## **Manager**

MR. J. E. WALTER, F.H.A.

PROOF PROOF











# PRESIDENT'S REPORT

TONY JOHNS,  
PRESIDENT

Next year, 1974, will be this Hospital's Centenary.

Everyone associated with the Hospital will be justified in sharing with us a sense of pride in the achievements of Wimmera Base Hospital during the past 100 years. I hope also that in celebrating the Centenary there may be created a new vigour within the Hospital which will be directed towards even further improvements on our past performances, great as they may be.

We have a staff of specially skilled, dedicated people, capable of providing a Hospital service of the highest standard. While we are fortunate in having these people we must all accept a community responsibility to ensure that facilities are available at least matching the quality of the staff. Some of these facilities are in fact not available today. Two areas I believe are in urgent need of development.

## 1. Intensive Care:

Increasingly it has become obvious that medical and nursing staff must attend emergencies of a life and death nature in unsuitable surroundings. On such occasions it is essential to have first class equipment available together with personnel properly trained in the use of such equipment and adequate areas to ensure space and privacy when treating emergencies.

An Intensive Care Area is essential. Attempts to convert existing ward areas to cope with this intensive care have failed and it remains for future construction to provide a suitable area.

## 2. Care of Aged and Disabled Persons:

Remarkable results are being obtained from rehabilitative therapy for aged and disabled persons. Our staff have endeavoured to introduce such measures in this Hospital. The design of the old wards and overcrowding seriously limits the scope of work which can be undertaken. Improved accommodation and rehabilitation facilities for improved care of these persons is of high priority.

## Planning:

We are working closely with the Hospitals and Charities Commission planning to overcome these deficiencies and others. They are urgent matters and I am sure the Hospitals and Charities Commission views them accordingly.

We, as a community however, must show that we seriously want these facilities for our people and I believe the way to achieve this is to indicate our preparedness to contribute towards the cost. You will realise that there are many communities competing with us for the allocation of Government resources to improve their health services.

## Public Appeal:

During next year we intend to inform every member of our community of the need for these improved health services and will be asking for a great effort from the people to raise the considerable sums of money which will be required to make these aims a reality.

The Board of Management is extremely pleased that Mr. E. G. Brownstein F.R.C.S. (Edinburgh), F.R.A.C.S., Honorary Surgeon, has agreed to appointment as Director of the Centenary Appeal and Mr. R. Bethel has accepted the position of Chairman of Appeal Committees.

We know the team of people developing around them represents an excellent group of civic minded leaders and the Board stands ready to support their Appeal work in every possible way.







## MANAGER'S REPORT

JOHN WALTER,  
MANAGER

In last year's report mention was made of the need for hospitals to become involved beyond the traditional ward bed role in order to better understand and meet community health service needs. In this direction this year we joined with the School of Health Administration, University of New South Wales, in a continuing survey of Health Services available in the Wimmera Region. The initial survey was conducted in Rainbow where the team received excellent co-operation from the community.

An innovation this year was the introduction of a Patient Questionnaire which asked patients what they thought of the services they received while in Hospital. The answers have been most interesting and the Hospital Inspection Advisory Committee have been trying to take advantage of patients' comments and thereby improve services where possible.

Planning is under way for the establishment of a Day Hospital which would care for aged and handicapped persons during the day, thereby avoiding the need for some admissions to hospital beds and also providing follow-up services for patients discharged from hospital beds.

The Board of Management has continued an investigation into future needs of this Base Hospital and as a result has determined that a program of rebuilding must be embarked upon. To this end the Board has presented a lengthy submission to the Hospitals and Charities Commission seeking the Commission's co-operation in developing these new and improved services.

The scheme of rebuilding proposed is of considerable magnitude and the support of the public will be essential for any program of rebuilding approved by the Hospitals and Charities Commission.







## MEDICAL STAFF

## MEDICAL SERVICES

DR. TOM WALPOLE,  
CHAIRMAN,  
HONORARY MEDICAL STAFF

Rapid change is the order of the day and our medical emphasis is changing in two ways:

First there is an increasing tendency for specialists to serve the increasing complexity of the fields once covered by general practitioners.

Second there is the increased emphasis in preventative and social medicine, especially geriatric medicine, opening new fields for the family doctor.

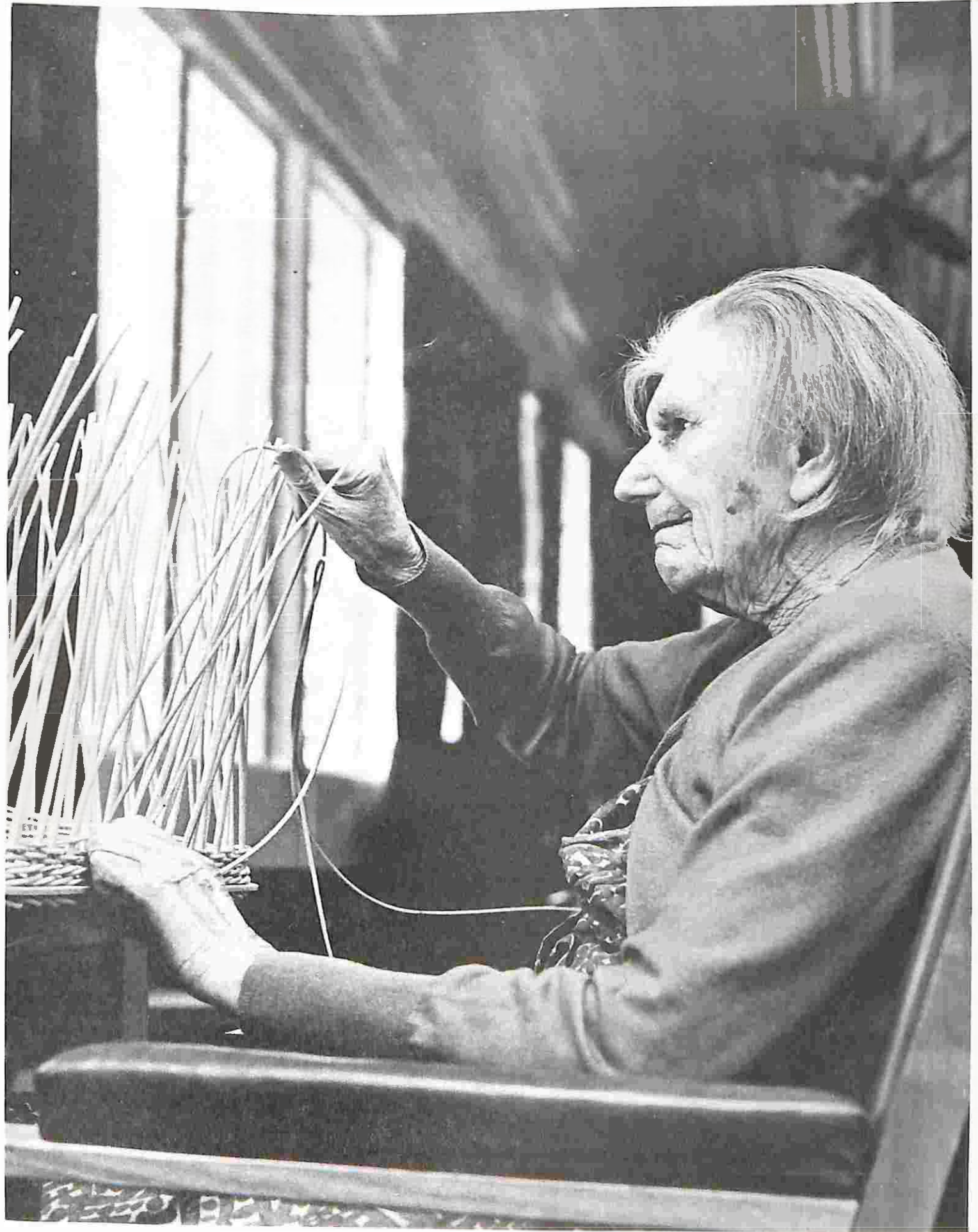
It seems that in the near future we shall have our own Day Hospital catering chiefly for elderly persons. This will be the first of many changes in social medicine and in fact probably the beginning of quite considerable physical and medical re-organisation of the Hospital.

Honorary Medical Service is unlikely to continue in its present form although the future structure in the present political climate is as yet uncertain.

During the year we farewelled, with regret, Dr. Ross Webster after twenty years honorary service. However we welcomed Mr. Ben Teo as an Honorary Surgeon and Dr. Howard Grey as an Honorary Assistant Medical Officer. These additions ensured our ability to continue to provide first class medical service without undue individual work overloads.

*Thomas Walpole*

- R. E. ABUD, M.B., B.S., M.R.A.C.P.  
(Honorary Physician)
- E. G. BROWNSTEIN, M.B., B.Ch., F.R.C.S. (Edin.), F.R.A.C.S.  
(Honorary Surgeon)
- B. M. CURRIE, M.B., B.S., D.P.M.  
(Honorary Psychiatrist)
- J. HOWARD GREY, M.B., B.S.  
(Honorary Assistant Medical Officer)
- P. P. HASLAU, M.B., B.S.  
(Honorary Medical Officer)
- G. B. LEYTON, M.A., M.D., D.C.P., F.R.C. PATH, F.R.C.P.A.  
(Pathologist)
- G. MANGAN, M.R.C.S., L.R.C.P., D.O.  
(Honorary Ophthalmologist)
- A. McBAIN, M.B., B.S.  
(Honorary Medical Officer)
- E. T. MILLER, M.B., B.S., M.R.C.O.G.  
(Hon. Obstetrician and Gynaecologist)
- J. S. MORLEY, M.B., B.S., F.R.C.S., F.R.C.S., L.R.C.P.  
(Honorary Orthopaedic Surgeon)
- M. M. O'BRIEN, M.B., B.S., M.R.A.C.G.P.  
(Honorary Medical Officer)
- R. A. TAYLOR, M.B. B.S.  
(Honorary Medical Officer)
- B. H. TEO, M.B., B.S., F.R.A.C.S.  
(Honorary Surgeon)
- T. V. WALPOLE, M.B.E., M.B., B.S., M.R.A.C.G.P.  
(Honorary Medical Officer -  
Chairman Hon. Medical Staff)
- R. W. WEBSTER, M.B., B.S., F.R.A.C.G.P.  
(Honorary Medical Superintendent)  
(Resigned 24-11-1972)
- L. WONG SHEE, M.B., Ch.B., M.C.R.A.  
(Radiologist - Medical Superintendent)





## MAINTENANCE SERVICES REPORT

JOHN IRELAND,  
ENGINEER

The year was marked by considerable activity in the services area.

During the 1972 Winter, the two wood-fired boilers, each of 130 horsepower, used to supply steam to the Hospital and Group Laundry were replaced by oil-fired steam generators.

The new boilers are Trevor Type "A", one of 150 horsepower, the other 250 horsepower. As only one boiler was installed at a time, there was minimum disruption to steam production in the Hospital.

The two new boilers are capable of producing up to 14,000 lb. of steam per hour. At the moment, approximately 50 ton of heavy furnace oil is used each month to produce up to 5,000 lb. steam per hour, the oil being stored in two underground tanks each holding 4,000 gallons.

Because of the high sedimentation carried in the Horsham Water Supply it has been found necessary to instal a Water Filtration Plant in order to prolong the life of the new boilers. Plans are under way, and the Plant will be installed during the current financial year.

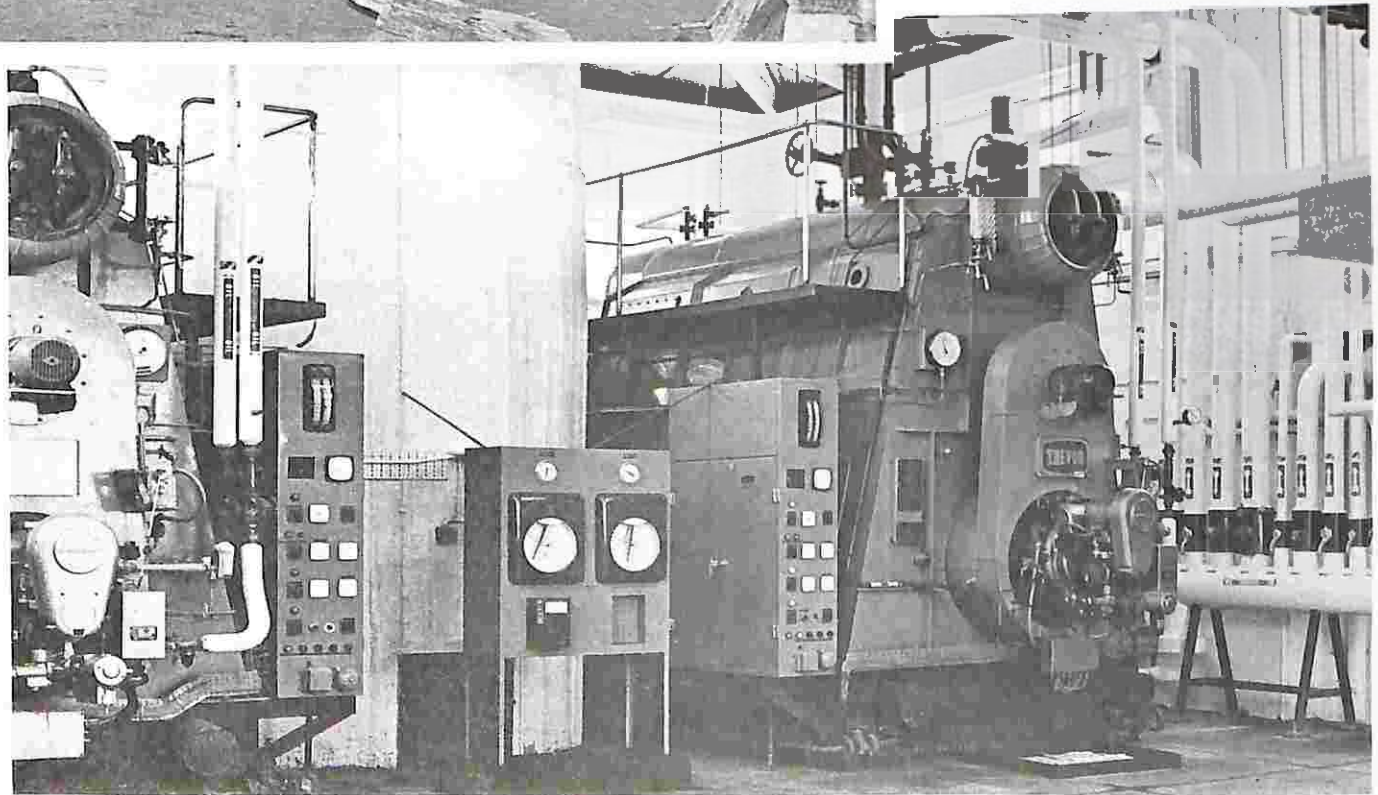
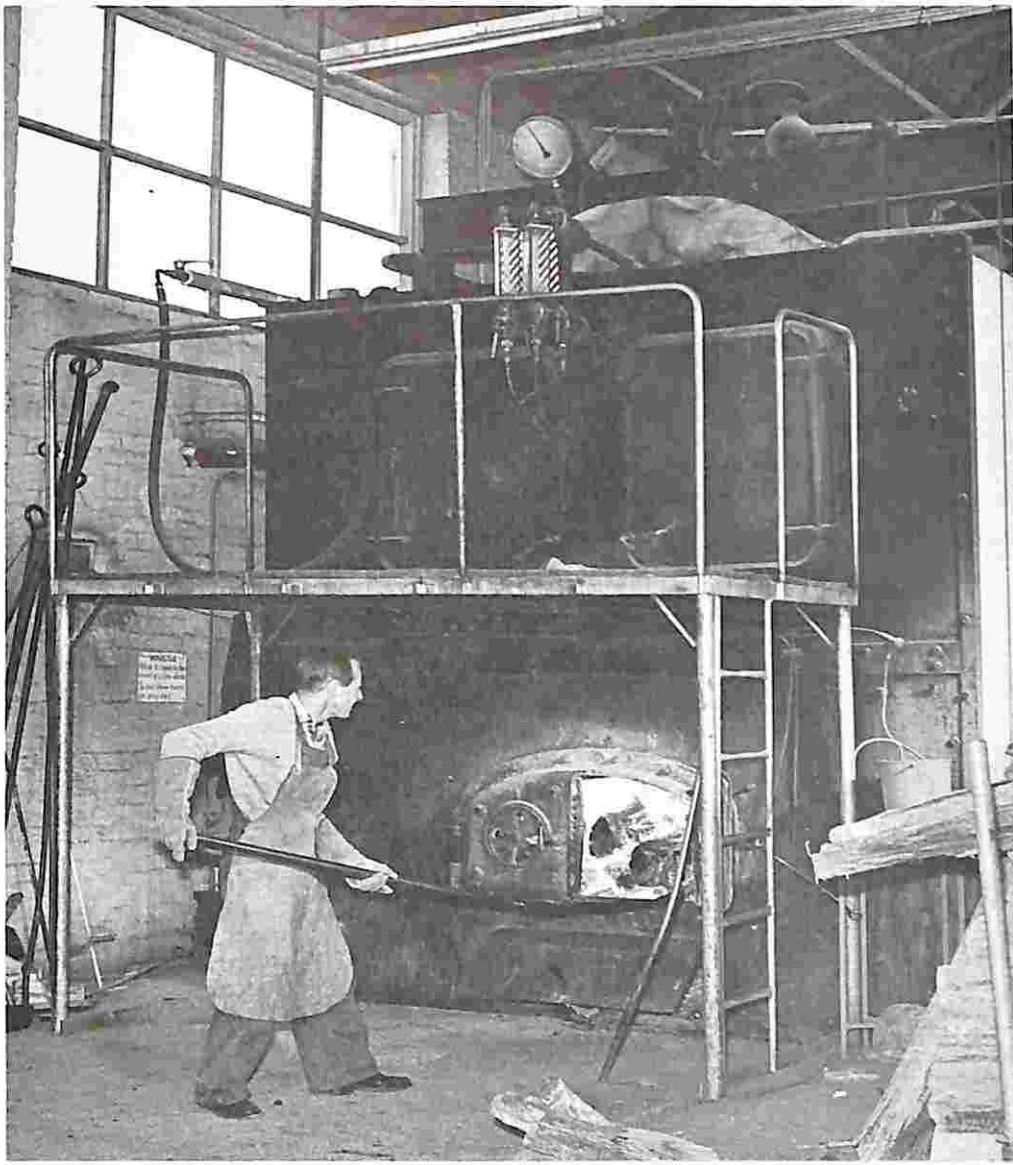
To allow for the building of the new Group Laundry, the old Maintenance Services Building, which included Workshops and Amenities area, had to be demolished. A new Maintenance Services Building is in course of construction and, during this construction the Chalet is being used for Workshops and Amenities.

In order to minimise traffic passing through the Children's Ward area and to enable more direct access to the Public Ward Areas, the Maintenance Staff constructed a new covered way between the Baillie Street Building and the Robinson Street Building. This was a most successful alteration in traffic areas.

The Briquette fired Hot Water Service in the Geriatric Wards was replaced with a steam line and a Heating Calorifier and Hot Water Storage Unit.

At the present time work is under way for an Electrical Substation. This will be sited between the Chalet and the Pathology Department Building and will include underground cabling between Baillie Street and the Sub-station. This work is expected to be completed by 9th October, and thus be completed before the New Group Laundry is in operation.







## DR. ROSS WEBSTER,

M.B., B.S., F.R.A.C.G.P.



Dr. Ross Webster was appointed to the Honorary Medical Staff of the Wimmera Base Hospital on 6th February, 1953. When he resigned to take up the position of Administrative Medical Officer at the Cancer Institute on 27th November, 1972, he had completed almost twenty years of selfless and devoted service to the Wimmera Base Hospital and the people of Horsham and the Wimmera Region. On 4th March, 1954, Dr. Webster was appointed to the Committee of the Wimmera Base Hospital to fill a casual vacancy, was subsequently re-elected, and remained a Committeeman until his resignation in November, 1972.

While a Committeeman he served on the House, Finance, Building and Nurse Education Committees for varying periods; and on the Wimmera Regional Council.

From 1960 to 1963 Ross Webster was President of the Wimmera Base Hospital Committee of Management. He was Chairman of the Honorary Medical Staff and later Chairman of the Nurse Education Committee. Between 1955 and 1972 Dr. Webster acted as Honorary Medical Superintendent, a position in which he revealed himself as an extremely capable administrator. During this time, many of the enduring medical administrative arrangements commenced.

Most people would have considered the above list of achievements as quite enough for one person, but not Ross Webster. Sandwiched between his work at the Wimmera Base Hospital and the ever increasing demands on his services as a physician, Doctor Webster was elected to the Horsham City Council in 1967, and was Mayor during 1970-71. Even after his appointment to Melbourne in late 1972 he still found time to commute between Melbourne and Horsham to attend Council Meetings during the remainder of his term as City Councillor.

In private life, apart from the responsibilities of rearing a family, he was an Elder of the Presbyterian Church and served on the Committee of the Lutheran Rest Home.

In saying farewell to Ross Webster, we acknowledge that our loss is Melbourne's gain. We wish him well in his future endeavours.



## WIMMERA HOSPITALS' GROUP LINEN SERVICE

STATEMENT OF INCOME AND EXPENDITURE FOR THE YEAR ENDED  
30th JUNE, 1973

1971-72	Income	1972-73
116,536	Services Charges .....	134,565
1,888	Collective Buying Subsidy .....	1,204
808	Income from Investments .....	907
<u>\$119,232</u>		<u>\$136,676</u>
	<b>Expenditure</b>	
2,679	Administration .....	2,759
72,326	Laundry .....	82,080
23,392	Linen .....	29,294
5,910	Mending and Manufacture .....	6,678
8,208	Transport .....	9,231
<u>\$112,515</u>		<u>\$130,042</u>
6,717	Surplus for the Year .....	6,634
<u>\$119,232</u>		<u>\$136,676</u>

### BALANCE SHEET FOR YEAR ENDED 30th JUNE, 1973

1971-72	ASSETS	1972-73
	<b>Current Assets</b>	
3,334	Cash at Bank .....	—
6,005	Maintenance Capital .....	31,433
<u>9,339</u>		
17,740	Sundry Debtors .....	25,363
52,405	Linen in use .....	52,572
11,495	Stores .....	11,219
<u>90,979</u>		<u>120,587</u>
	<b>Deferred Assets and Investments</b>	
18,000	Maintenance (Int. Bearing Dep.) .....	18,000
66,000	Capital (Govt. Bonds & Int. Bear Dep.) .....	74,000
<u>174,979</u>	Total Current and Deferred Assets .....	<u>92,000</u>
	<b>Fixed Assets at Cost</b>	125,976
44,110	New Buildings .....	44,110
9,269	Laundry Plant and Equipment .....	9,269
737	Linen Service Plant and Equipment .....	737
7,108	Mending and Manufacture Equipment .....	7,108
464	Motor Vehicle Transport and Equipment .....	464
	General Plant and Equipment .....	61,688
	Less Provision for Deprec. Plant, Machinery and Equipment and Plant Replacement .....	61,360
<u>58,428</u>		<u>328</u>
<u>\$178,239</u>	Total Assets .....	<u>\$338,891</u>
	<b>EQUITIES</b>	
	<b>Current Liabilities</b>	
5,200	Bank Overdraft (Maintenance) .....	19,631
2,547	Provision for Maintenance and Repair .....	6,726
163	Provision for Long Service Leave .....	3,196
<u>7,910</u>	Accrued Expenses and Sundry Creditors .....	1,860
	Capital	31,413
67,518	Capital Fund .....	221,815
102,811	Maintenance Fund .....	85,663
<u>\$178,239</u>	Total Equities .....	<u>307,478</u>
		<u>\$338,891</u>

#### AUDITORS' REPORT

In our opinion the above Balance Sheet and Statement of Income and Expenditure are drawn up so as to exhibit a true and fair view of the state of affairs of Wimmera Hospitals' Group Linen Service as at 30th June, 1973 and the results of its services for the year then ended.

GREEN, TAYLOR AND GREENALL, Chartered Accountants



# WIMMERA BASE HOSPITAL

## MAINTENANCE ACCOUNT

STATEMENT OF INCOME AND EXPENDITURE FOR YEAR ENDED 30th JUNE, 1973

1971-72	Income	1972-73	%
	Government Grants and Payments:		
\$545,396	Government Grants .....	\$656,568	41.7
32,213	Pharmaceutical Benefits .....	45,007	2.9
953	T.B. Patients .....	1,284	0.1
—	Other .....	4,650	0.3
<u>\$578,562</u>		<u>\$707,509</u>	<u>45.0</u>
	<b>Patients' Fees</b>		
45,813	Non Qualified Inpatients (M.C.A., W.C., Repat.) .....	55,253	3.5
145,685	Qualified Public Inpatients (Inc. P.M.S.) .....	148,335	9.4
456,671	Qualified Non Pub. Inpats. ....	532,482	33.8
64,863	Outpatients' Fees .....	84,360	5.4
<u>\$713,032</u>		<u>820,430</u>	<u>52.1</u>
	<b>Miscellaneous Income</b>		
401	Charitable Contributions ..	278	
45	Income from Investments ..	67	
7,383	Sundry Income .....	8,451	0.5
<u>7,829</u>		<u>8,796</u>	<u>0.5</u>
1,299,423	Total Operating Income ..	1,536,735	97.6
2,520	Non Operating Income .....	1,636	0.1
1,301,943	Total Income .....	1,538,371	97.7
340	Deficit for the year .....	35,766	2.3
<u>\$1,302,283</u>	Total .....	<u>\$1,574,137</u>	<u>100.0</u>
	<b>Expenditure</b>		
937,086	Salaries and Wages .....	1,127,525	71.6
71,203	Administration .....	90,516	5.8
63,647	Dietary .....	71,168	4.5
8,254	Housekeeping .....	9,921	0.6
67,967	Linen, Laundry, Sewing ..	74,064	4.7
17,985	Lighting, Power, Heating ..	17,338	1.1
40,088	Maintenance of Buildings, Plant and Equipment .....	60,851	3.9
83,745	Medical and Surgical .....	113,895	7.2
1,289,975	Total Operating Expend. ....	1,565,278	99.4
12,308	Non Operating Expend. ...	8,859	0.6
<u>\$1,302,283</u>	Total .....	<u>\$1,574,137</u>	<u>100.0</u>

### AUDITORS' REPORT

We report that we have examined the Accounts of the Wimmera Base Hospital for the year ended 30th June, 1973. In accordance with usual hospital accounting practice, provisions have not been made for Depreciation of Buildings, Plant and Equipment. Subject to the foregoing, in our opinion the Balance Sheet and Statements of Income and Expenditure are properly drawn up so as to give a true and fair view of the state of the Institution's financial affairs at 30th June, 1973, and of the financial results of its services for the period ended on that date. The accounting and other records examined by us have been properly maintained.

GREEN, TAYLOR AND GREENALL, Chartered Accountants.



# WIMMERA BASE HOSPITAL

## BALANCE SHEET AS AT 30th JUNE, 1973

1971-72		1972-73
	<b>ASSETS</b>	
	<b>Current Assets</b>	
110	Cash in Hand .....	110
	<b>Cash at Bank</b>	
1,000	Maintenance (Manager's Advance) .....	1,000
1,180	Patients' Trust Deposits .....	1,224
1,725	Special Purposes .....	8,804
160	T. F. Ryan Prize .....	170
36,777	Govt. Trust Fund .....	—
<u>40,952</u>	Total Cash in Hand and at Bank .....	<u>11,198</u>
13,368	Stock .....	11,308
135,987	Patients' Fees Outstanding (after providing \$12,988 for doubtful debts) .....	154,533
37,110	Income Accrued .....	43,373
1,645	Prepaid Expenses .....	4,322
8,760	Debtors — Other .....	4,691
4,203	Debtors — Spec. Purp. Medical .....	4,756
	<b>Investments</b>	
800	Endowment .....	800
12,236	Reserve .....	12,236
28,000	Special Purposes (Medical) .....	35,000
700	T. F. Ryan Prize .....	700
200	Maintenance .....	200
125,000	Capital .....	90,000
<u>166,936</u>	Total Investments .....	<u>138,936</u>
408,961	Total Current Assets .....	<u>377,527</u>
	<b>Fixed Assets</b>	
875,416	Land and Buildings, at cost .....	1,005,723
372,446	Plant and Equipment at cost .....	377,144
<u>1,247,865</u>	Total Fixed Assets .....	<u>1,382,867</u>
<u>\$1,656,826</u>	Total Assets .....	<u>\$1,760,394</u>
	<b>EQUITIES</b>	
	<b>Current Liabilities</b>	
76,694	Creditors (Maintenance) .....	58,006
40,346	Accrued Expenses .....	47,780
4,757	Other Creditors (Maint.) .....	7,473
70,100	Provision for Long Service Leave .....	91,862
23,864	Bank Overdraft — Maintenance .....	79,102
27,939	Bank Overdraft — Capital .....	18,551
<u>\$243,700</u>		302,774
	<b>Endowment, Special Purpose and other Funds</b>	
800	Endowment .....	800
12,236	Reserve .....	12,236
1,180	Patients Trust Accounts .....	1,224
33,928	Special Purposes (Medical) .....	48,560
36,777	Government Trust .....	—
860	T. F. Ryan Prize .....	870
<u>\$85,781</u>		\$63,690
	<b>Capital</b>	
1,344,926	Hospital Capital .....	1,454,316
(17,581)	Maintenance Fund Accum. Deficit .....	(60,386)
<u>1,327,345</u>		<u>1,393,930</u>
<u>\$1,656,826</u>	Total Equities .....	<u>\$1,760,394</u>



### SPECIAL PURPOSES (MEDICAL) FUND

FOR YEAR ENDED 30th JUNE, 1973

Income	Expenditure
Fees Received direct from Insurers .....	Payment of Bonuses, Prof. Memberships and sub- scriptions to Prof. Journals .....
1,152	3,674
40% of O.P. Fees received by Path Dept. ....	Transfer to Capital Fund for Purchases of Plant and Equipment .....
24,299	8,965
Interest on Investments .....	Surplus for the Period .....
1,820	14,632
<u>\$27,271</u>	<u>\$27,271</u>

### CAPITAL FUND ACCOUNT

FOR YEAR ENDED 30th JUNE, 1973

3LK Appeal Expenses .....	Balance 1st July, 1972 .....
69	1,344,926
Interest on Overdraft .....	Govt. Trust Fund .....
1,564	36,777
Transfer to Wimmera Hospitals Group Linen Service (covered by Special Govt. Grant per contra) .....	Special Purposes Medical Cash Receipts incl. Donations, Govt. Grant etc. ....
125,975	8,965
Balance 30th June, 1973 .....	Interest on Account .....
1,454,316	511
<u>\$1,581,924</u>	<u>\$1,581,924</u>

### COMPARATIVE FINANCIAL STATEMENTS

FIVE YEARS IN REVIEW — FIGURES AS AT 30th JUNE IN EACH YEAR

Income	1969	1970	1971	1972	1973
Government Grants and Payments .....	\$274,010	\$335,228	\$487,459	\$578,562	\$707,509
Patients' Fees .....	455,414	473,898	520,040	713,032	820,430
Miscellaneous .....	5,116	4,979	7,415	7,829	8,796
<b>Total Operating Income</b> .....	<b>734,540</b>	<b>814,105</b>	<b>1,014,914</b>	<b>1,299,423</b>	<b>1,536,735</b>
Non Operating Income .....	1,761	1,585	2,292	2,520	1,636
	<u>736,301</u>	<u>815,690</u>	<u>1,017,206</u>	<u>1,301,943</u>	<u>1,538,371</u>
<b>Expenditure</b>					
Salaries and Wages .....	469,678	550,667	718,250	937,086	1,127,525
Administrative .....	42,756	46,656	61,052	71,203	90,516
Dietary .....	55,055	54,787	60,549	63,647	71,168
Housekeeping .....	7,245	6,747	7,367	8,254	9,921
Linen, Laundry, Sewing .....	46,542	46,246	58,082	67,967	74,064
Power, Lighting, Heating .....	15,560	16,313	17,766	17,985	17,338
Maintenance .....	24,230	31,036	38,055	40,088	60,851
Medical and Surgical .....	50,603	58,936	65,246	83,745	113,895
<b>Total Operating Expend.</b> .....	<b>711,669</b>	<b>811,388</b>	<b>1,026,367</b>	<b>1,289,975</b>	<b>1,565,278</b>
Non Operating Expend. ....	12,817	9,386	8,932	12,308	8,859
	<u>\$724,486</u>	<u>820,774</u>	<u>1,035,299</u>	<u>1,302,283</u>	<u>1,574,137</u>

### COMPARATIVE STATISTICS

FIVE YEARS' STATISTICS ENDED 30th JUNE, 1973

Total Inpatients Admitted .....	3,177	2,930	2,917	2,876	3,224
Total Inpatients Treated .....	3,296	3,065	3,041	3,009	3,553
Total Bed Days .....	45,097	44,215	45,271	45,639	49,003
Daily Average Occupied Beds .....	123.6	121.2	124.0	124.7	134.3
Average Stay of Patients (days) .....	13.7	14.4	14.9	15.2	14.6
Total Outpatients Treated .....	10,080	10,970	11,994	13,754	14,182
Total Outpatients Attendances .....	17,431	20,326	21,242	20,099	21,019

## J. K. (JACK) NEIGHBOUR

STOREMAN



Jack Neighbour started work at the Base Hospital in March, 1953. However, his association with the Hospital goes back many years beyond this to 1939 when he would come to the Hospital as Assistant to the Visiting Pharmacist. In those days the Baillie Street section of the Hospital was an open paddock and there was a farm attached to the Hospital which provided poultry and livestock.

During the second world war Jack was a member of Australia's Armed Forces. In 5 years of service to his country, he participated in the campaigns in Lae, Port Moresby and Bougainville.

In 1953, when appointed Storeman, there were seventeen separate stores including the farm produce stores. Today there is just one big central store, and on the place where this stands there used to be a small cottage with a T.B. Chalet at one end.

There have been many startling changes at the Hospital during the last twenty years, but the one that had the greatest impact on Jack was the closing of the T.B. Chalet. In 1953 the Chalet was full and it was a time when many people were concerned with the effects of Tuberculosis.

Other noticeable changes have been the emergence from the charity concept of hospitals to a more open handed policy based on need; and the more recent introduction of the electronic era. Of a minor note is the noticeable lack of hospital smells that used to exist when Chloroform and Ether were in use.

Looking back Jack cannot understand how the hospital existed in the old days when things were so much harder.



## GROUP LAUNDRY SERVICE

RON MIATKE,  
LAUNDRY MANAGER

The Wimmera Regional Hospitals' Group Laundry Service commenced in September, 1959.

It is a completely self supporting entity comprising seventeen participating institutions from the Wimmera region.

The only income available to the service consists of charges raised to participating institutions for the supply of clean linen; plus a small amount derived from interest in invested funds and rebate from a collective buying scheme. The service charge to participating institutions was recently raised from 10c. per pound to 12.75c. per pound (28c. per kilo); the first increase since operations commenced in 1959. By far the greatest item of expense is salaries and wages, which accounts for over 60% of total cost. Initially, a rebate was paid to participating institutions, but as costs have risen over the years, these have had to be absorbed, and consequently, no rebate has been declared since 30th June, 1971.

The service was designed for a maximum output of eight tons per week, and while the initial output was only 4½ tons per week, today it is approximately eleven tons per week.

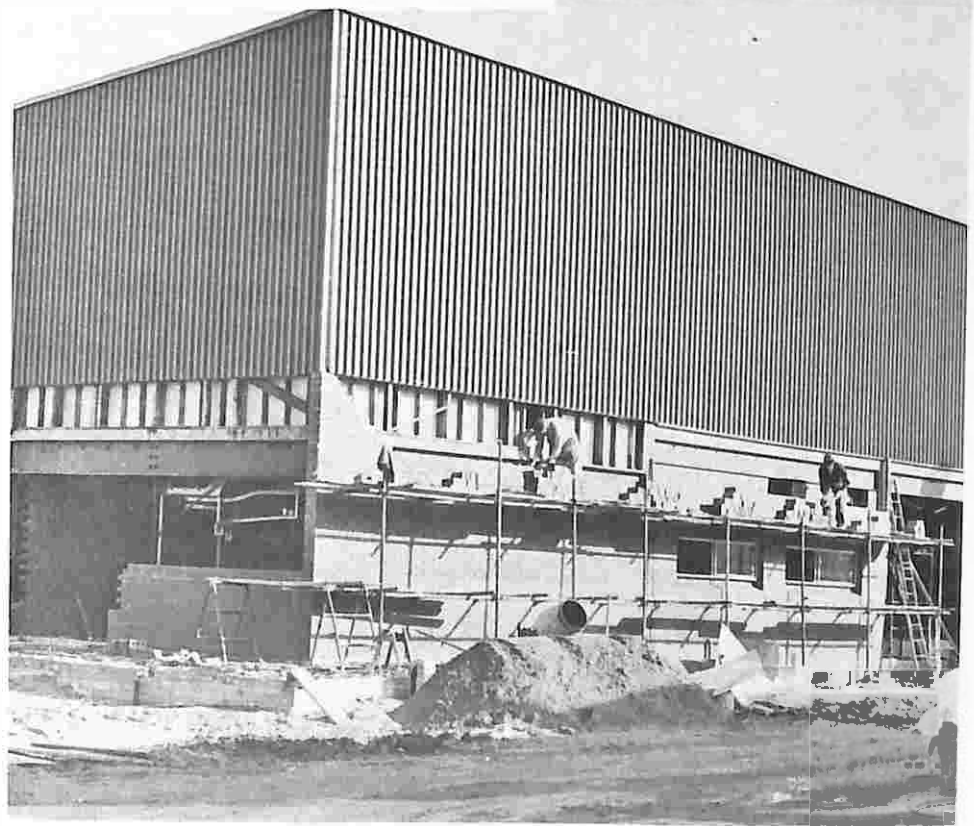
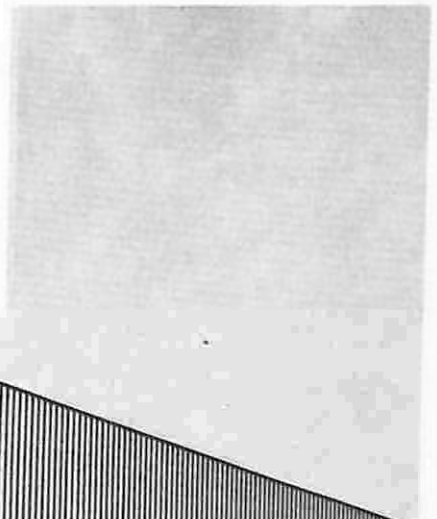
The need for new premises was, therefore, an urgent requirement.

With the assistance of the Hospitals and Charities Commission, who have agreed to paying the full cost of rebuilding, a new Group Laundry is in the course of construction. This will commence operations towards the end of 1973, and has been designed to take up the expansion resulting from anticipated increased demand over the years to come.

New labour saving equipment such as a conveyor belt system, chute loading of washing machines, washer extractors and multi folding equipment will allow for increased expansion without an off-setting increase in staff employed, thus stabilising costs.

With the opening of the new laundry, we look forward to an improved service to the Wimmera Region and the maintenance of the co-operative relationships that exist between the participating institutions.

*R. E. Miatke*



## VISITING MEDICAL SERVICES

LES WONG SHEE,  
MEDICAL SUPERINTENDENT

We are fortunate at this Hospital to be able to provide a wide range of services to patients. This requires both trained staff and specialised equipment. The servicing of equipment is a major problem in a country centre and for many problems we rely on the skill and initiative of our technical and engineering staff.

There is an increasing demand for blood transfusions from both medical and surgical patients. The voluntary workers who organise the Blood Bank and the many donors provide what is now an essential service.

This year a Hospital training course for Ambulance Officers was commenced and it is hoped that a wider range of resuscitative measures will be able to be carried out on badly injured patients at the roadside.

Medical records is well organised and statistics from computer data are now readily available.

Preston and Northcote Community Hospital has not been able to provide our full complement of Resident Medical Officers for the first half of this year but the position has now improved.

Several medical students will do their elective terms at this Hospital during the year. This will be a valuable part of their medical training.

It is not possible to mention all the many Hospital services which contribute to the patients' welfare. I hope that the friendly co-operation between departments will continue.







## NURSING SERVICES

LESLEY WOOLLEY,  
MATRON

Once again we were able to maintain an extremely high standard of nursing care. This, in spite of the ever increasing requirements of the new nursing curriculum and a daily average considerably higher than the previous year. We are fortunate indeed to be able to maintain a high level of recruitment to the Nursing Service.

To assist with the teaching of Psychiatric Nursing, Sister Jan Woolley attended a course in Psychiatric Nurse Teaching at Royal Park.

As part of a continuing pattern of providing the best in Nursing Care, Sister Pannan undertook a crash course in Coronary and Intensive Care Nursing at the Preston and Northcote Community Hospital.

The Annual Graduation Ceremony was held on the lawns of the Nurses Home, with Dr. Ross Webster as Guest Speaker. Miss Wendy Maddern was awarded the Ryan Prize for Best Practical Nurse, while Miss Nola Borgelt received the Past Trainees' Prize. Graduation Certificates were presented to the following nurses:—

BORGELT, Nola  
BROOKSBY, Julie-Anne  
CARGILL, Jennette  
CLUGSTON, Kay  
COLBERT, Susanne  
DICKERSON, Dawn  
EDMONDS, Nola  
JOCHINKE, Janis  
KEATING, Paulinne  
KRANZ, Denise  
KRAUSE, Beverly  
KRELLE, Marion  
LYONS, Julie

MADDERN, Wendy  
MANNINGTON, Yvonne  
MATHEWS, Patricia  
McALLISTER, Barbara  
McDONALD, Janis  
McLINDEN, Marilyn  
PHELPS, Darlene  
RABONE, Dianne  
RICKETS, Sandra  
SEMMLER, Elaine  
SCHULTZ, Leonie  
STEELE, Carolyn  
WILLY, Cheryl

Finally, I would like to express my thanks to all members of the Nursing, Medical and Administration Staff for their co-operation during the year.

*L. G. Woolley*



## LADIES' AUXILIARIES

AUDREY McKELLAR,  
PRESIDENT

It is my privilege and pleasure to present the Annual Report of the Wimmera Base Hospital Ladies Auxiliary for 1972-73.

Once again it has been a very successful year both financially and socially. Our objective was to furnish an Activities Area and Toilet Block, and, as the result of some very successful functions, the wonderful sum of \$6245.76 was raised.

This sum would not have been possible without the generous support of the Horsham and district people. Our special thanks go to the Mail-Times, 3WV and 3LK for publicity; The Church Guilds and District Ladies Clubs for helping stock the Opportunity Shop and donating dinner raffles; The City Band for providing music at the Garden Party; the Apexians for their wonderful help on several occasions; the ladies who donated goods for Raffle Prizes; and Mrs. Maddern for floral work; Mr. Edwards for Mrs. Corner, our Opportunity Shop organiser; Mrs. Block auditing; Miss Healey and Kitchen Staff for catering; Mr. Walter, Mr. Leith and hospital staff for their help at all times; and many others who have helped during the year.

Our Social Functions for the year were — a Sherry Party and Fur Parade at the home of Mr. and Mrs. Ron Schmid; a Casserole Luncheon and Shoe Parade by Rene Shoes; a Garden Luncheon Party at the "Como" home of Mr. and Mrs. E. Jackman, featuring a display of bark paintings by Mrs. Wright; a Poolside Sherry Party at Horsham Drive-In with a parade by Prestige; the Annual Garden Party held in the Hospital grounds with a Fashion Parade, courtesy of Maria de Ros; a Wine and Dine held in Town Hall with the musical program by Mrs. Roma Carlson and Mr. Wren; and several house parties held in members' homes. My special thanks go to all the Office Bearers for their wonderful help during my two years in Office and to all auxiliary Members for their generous and loyal support. By best wishes to the in-coming Office Bearers and may we all continue to work happily together for our hospital — the Wimmera Base.

*Audrey McKellar*





# LIFE GOVERNORS

ALFORD, MRS. L.  
ANDERSON, A. S.  
ANDERSON, MRS. A. N.  
AUMANN, SEN., MRS. H. W.  
BEYNON, J. H.  
BRIDGE, A. L.  
BUTLER, L. H.  
BUTLER, WILLIAM  
CAIN, MRS. T.  
CARTER, MRS. J.  
CATHCART, MISS D.  
CATHCART, MISS RUBY  
CHARLES, MRS. R. E.  
CLAYTON, S.  
CONROY, T. E.  
CORNER, MRS. P.  
DENEYS, CHARLES  
DRAFFIN, ISAAC

DUMESNY, MRS. I. M.  
EMANUEL, R. G.  
FREEMAN, R. C. S.  
GARTH, D. J.  
GILL, WILLIAM  
GRANT, D.  
HARFIELD, MRS. C. R. M.  
HARFIELD, MISS J. E.  
HATELEY, B. V.  
HOLE, LIONEL, T. A.  
HUTCHESSON, MRS. A. L.  
HUTCHINSON, MRS. M.  
HUTCHINSON, L. R.  
HUTTON-JONES, B.  
ISBEL, MISS JULIA  
KENT, GEORGE  
KROKER, MRS. C. O.  
LEIVESLEY, A. G.

LOVETT, K. H.  
MASSEY, A.  
MONAGHAN, P. C.  
McAULEY, A.  
McCLINTOCK, W.  
McINTYRE, V. C.  
NETTLEBECK, GEORGE  
O'BRIEN, M. M.  
O'CONNOR, K. J.  
PEDERICK, E. B.  
PHILLIPS, A. W.  
PIETSCH, E. B.  
POWELL, MRS. J.  
RANDALL, H. J.  
REID, L. E.  
ROBERTSON, PETER  
ROBINSON, W. R.  
RUSSELL, MRS. E. W.

RUSSELL, M. S.  
SCHMIDT, JOHN  
SCHOLES, ALBERT  
SCHULZ, F. P.  
SCHURMANN, MISS N. J.  
SHEPHERD, R. W.  
SIMPSON, M. S.  
SINCLAIR, WILLIAM  
SMITH, J. E.  
SMITH, MRS. MAISE  
STENHOUSE, MISS L.  
TIPPETT, MRS. E. M.  
WATT, D. McL.  
WEBSTER, R. W.  
WIK, MRS. W. M.  
WILLIAMSON, S. V.

# DONATIONS

## A

Abud R. Dr., \$2; Alcoholics Anonymous, \$5; Alexopoulos G., \$20; Allen D. M/S., \$2; Ampol Petroleum P/L, \$20; Andrews A. W. & L. L., \$5; Andrews V. L. \$6; Anonymous, \$9.60.

## B

Backyard Bazaar, Sharon Driscoll, Beverley Hartigan, Jan Gregor, Joanne Moloney, \$9; Ball R. Mrs., \$1; Barry N. S. Mr., \$12; Beckett E. M., \$6; Berry J. Mr., \$85; Blake C. Mr., \$5; Bowden A. Mr. & Mrs., \$5; Boyle M. Miss, \$195; Brennan E. Mrs., \$2; Buckler J. P. & A. L., \$435; Bunge E. Mr., \$15; Burgess R. Mr., \$2; Butler E. Mrs., \$2.

## C

Carruthers I. Mrs., \$20; Clarke E. Mrs., \$8; Clarke N. J. Mr., \$12; Coles G. J. & Co., \$15.50; Collier Custodian Corp., \$1000; Collins H. Mr. & Mrs., \$5; Colyer E. Mrs., \$341; Commercial Bank of Aust., \$10; Cossatz A. F. Mrs., \$1; Cuddihy M. Mr., \$2.

## D

David Anderson & Co., \$31; Dawson Mrs. E. A. (Deceased) & B. Miss, \$2; Dooen Ladies Guild, \$10.

## E

Eldridge E. Mr., \$2; Epilepsy Social Fund, \$130.

## F

Farrington G. Mr., \$1; Flack J. E. Mr., \$90; Freeman M. Mr., \$20; Fuga G. Mrs., \$6.

## G

Gerlach E. Mr., \$10.50; Goods A. Mrs., (Deceased), \$10; Gross A. R. Cr., \$6.

## H

Hallam L. Mr. \$2; Hanna J. M/S., \$2; Hanna, W. T. Mr., \$5; Harnath, J. Mr. & Mrs., \$4; Harris G. Mrs., \$4; Harrison A. Mr. & Mrs., \$30; Harvey E. Miss, \$30; Hateley, C. Mrs., \$20; Hately, H. Mr., \$150; Hawkins A. J. \$40; Hawkins C. F.,

\$10; Hawkins J. M., \$5; Hemley W. Mr. & Mrs., \$2; Henderson G. M/S., \$6; Henke E. Mr., \$10; Hennessy C. Mrs., \$650; Henstridge, C. Mr., \$270; Henstridge, M., \$5; Herald & Weekly Times, \$350; Hill D. Mrs., \$3000; Holligan M. Miss, \$2; Hood F. L. Mrs., \$40; Horsham Arts Council, \$50; Horsham City Brass Band, \$10; Horsham High School, \$50; Horsham Old Folks Auxiliary, \$230; Horsham Rifle Club, \$3; Horsham Telephone Exchange, \$54; Horsham Urban Fire Brigade Ladies Auxiliary, \$10; Humphreys W. Mr., \$2.

## I

Independent Order of Oddfellows, \$10.50; International Harvester Company, \$20; Isobel J. E. Miss, \$2.

## J

Jackman E. B. Mr. & Mrs., \$50; Janetzki M. Mrs., \$20; Jardine M. Miss, \$5; Johns A. Mr., \$2; Jolee Sports, \$10.

## K

Keene M., C., & J., \$1; Kemp E. Mr., \$30; Kewell Primary School, \$10.

## L

Lange E. V., \$4; Lange L. Mr., \$6.30; Lawson A. Mr., \$10; Liddy R. Mr., \$2; Lord Mayors Fund, \$70; Lowery, E. Mr., \$5; Lutheran Sunday School, \$53.

## M

McCallum G. Mr., \$3; McClure P. F. Mr., \$5; McCombe E. Mrs., \$263; McFarlane D. Mr., \$2; McFarlane W. Mr., \$5; McGregor Mary (Estate), \$200; Mackley H. W. \$10; Macumber, G. Mr. & Mrs., \$2; Merck, Sharpe & Dohme, \$20; Methodist Women's Fellowship, \$10; Millar, A. Mr & Mrs., \$3; Mitchell, A. Mr., \$10; Mitchell, C. Mr., \$10; Muhlnickel M. E. L. Miss, \$100; Muhlnickel, V. F. Mr., \$400; Murphy, E. Mr., \$160.

## N

Newell, E. Mrs., \$5; Nixon, F. W. & A. E., \$10; Northfield, J. Mr., \$10; Nunan, M. Mr., \$5.

## O

O'Brien, M. M. Dr., \$2.

## P

Pascall L. G. Mrs., \$5; Pearson, J. Mrs., \$3; Pretlove, H. J., \$2; Puls, N. Mr., \$10.

## R

Radio Station 3LK Staff, \$9; Rissmann, O. V. Mr., \$5; Robinson, B. Mr., \$10; Ross, Miss E. H. (Deceased), \$55; Royal Victorian Nursing Council, \$100.

## S

Scott, E. R. Mrs., \$10; Schulz, H. Mrs., \$125; Semmler, H. Mr., \$4; Smith, C. I., \$5; Smith, D. Y. Mrs., \$3; Smith, F. G. Mr., \$80; Smith, M. A. R. Miss, \$20; State Electricity Commission, \$5; Stevens, N., \$0.50; Stewart, B. Mr., \$2; Stewart, R. Mrs., \$4.

## T

Tait, D. Mrs., \$2; Taylor, L. & M., \$10; W. C. Thomas & Sons, \$20; W. C. Thomas Trust Fund, \$300; Tucker, N. Mrs., \$336; Tuermann, A. Mrs. (Deceased), \$30.

## W

Waldron, R. Miss, \$5; Walker, I. Mrs., \$10; Wallis, M. Miss, \$352; Walter, J. E. Mr. & Mrs., \$4; Walter, R. Mr. & Mrs., \$15; Warwick, A. Mrs., \$5; Waterfield, B. \$1; Watt, E. B. Miss, \$500; Williams, T. & F. (Deceased) \$800; Wills, D., \$10; W. D. & H. O. Wills Ltd \$20; W.B.H. Ladies Auxiliary \$5457.88; W. B. H. Younger Set, \$107.75; Wimmera Group Honorary Justices Association, \$20; Wimmera Legacy, \$50; Wondah North S. S., \$9.40.

## Y

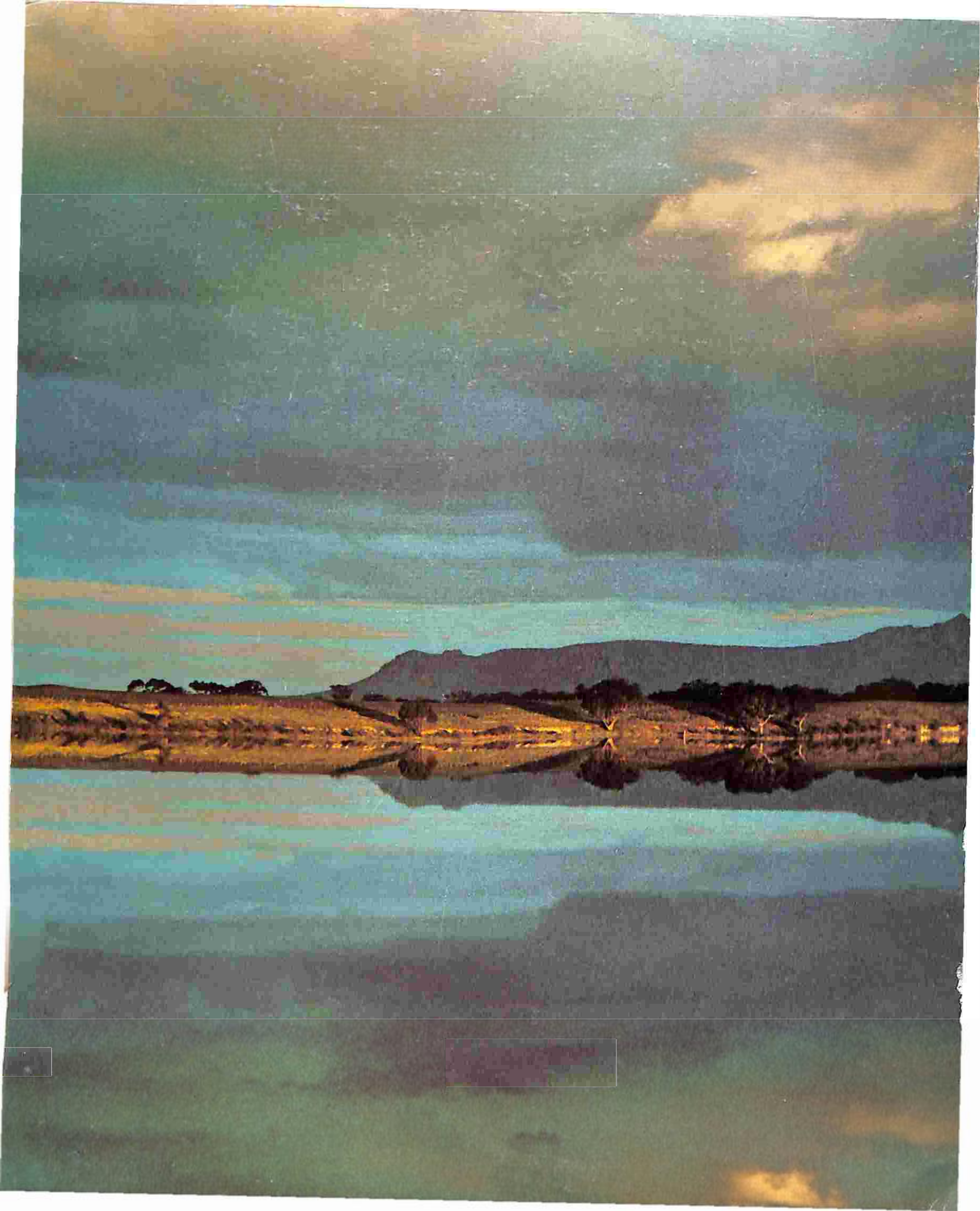
Yanac Primary School, \$5; Yeates, L. Mr., \$16.

## Z

Zweck, C. Mrs., \$0.40.

FRONT AND BACK COLOR COVER OF GREEN LAKE BY  
BRIAN MURRAY STUDIOS, HORSHAM. WIMMERA  
OTHER PHOTOGRAPHS BY HUGH JENKINS, HORSHAM.  
MAIL-TIMES AND BRIAN MURRAY STUDIOS,

PRINTED LITHO BY WIMMERA MAIL-TIMES PTY. LTD., HORSHAM.





# ***Wimmera Base Hospital***

## ***100th Annual Report***

