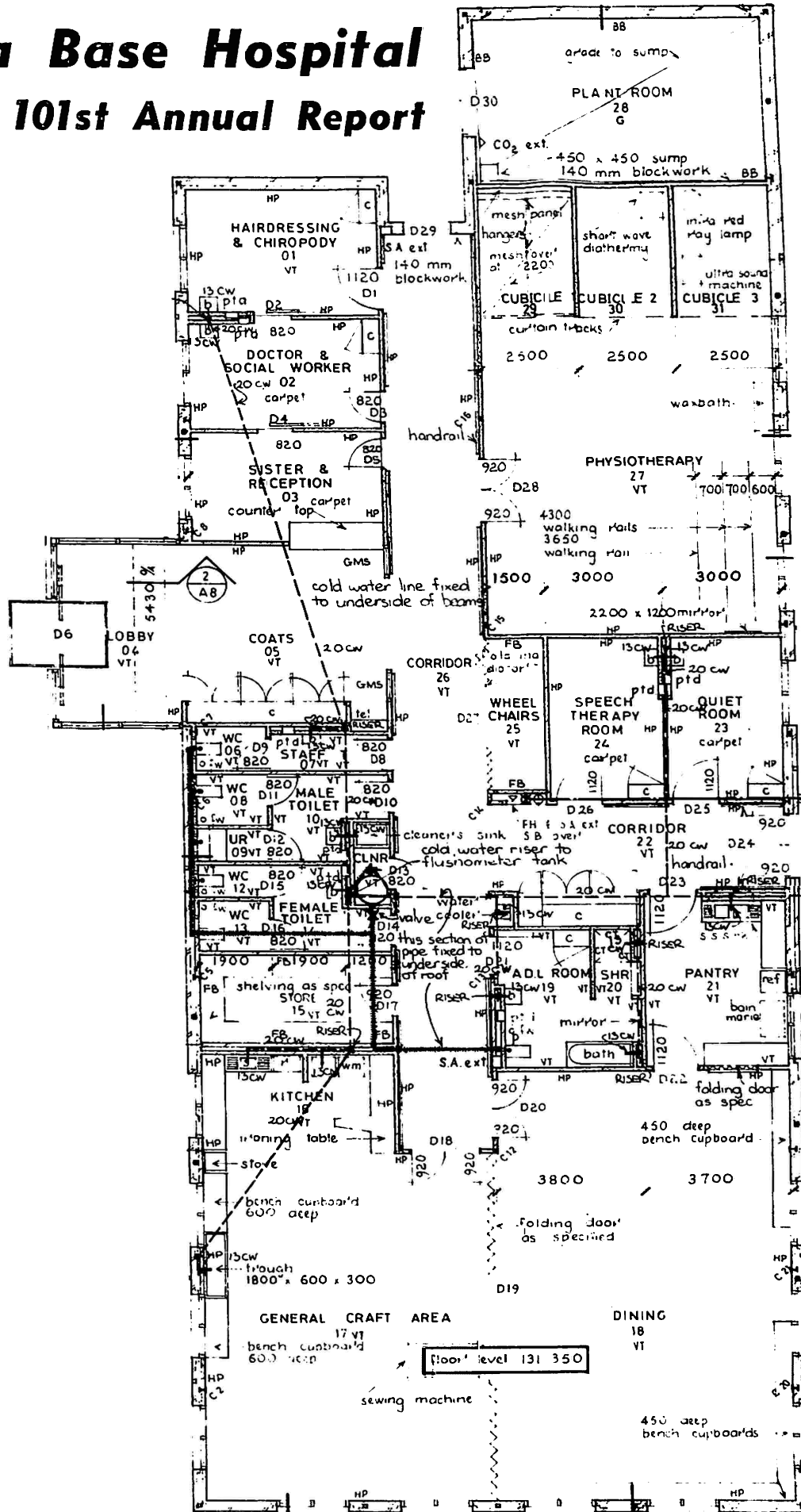


Wimmera Base Hospital

101st Annual Report



**OFFICE BEARERS
AND COMMITTEE
1974-75**

MR. D. J. McFARLANE (President)
DR. R. E. ABUD (Senior Vice-President)
MR. R. R. BURGESS (Junior Vice-President)
MR. K. H. LOVETT (Treasurer and Govt. Nominee)
MR. T. E. CONROY
MR. M. W. CUDDIHY
MR. E. L. A. ELDRIDGE (Resigned 5/6/75)
MR. A. A. JOHNS (Resigned 7/11/74)
MR. R. G. LIDDY
DR. M. M. O'BRIEN
MR. H. J. RANDALL
MR. R. W. SHEPHERD
MISS M. A. R. SMITH
MR. R. B. STEWART

Auditors

GREEN, TAYLOR AND GREENALL
CHARTERED ACCOUNTANTS

Honorary Solicitors

POWER AND BENNETT

Bankers

COMMERCIAL BANKING COMPANY OF SYDNEY

Architects

R. S. DEMAINE, RUSSELL, TRUNDLE,
ARMSTRONG AND ORTON PTY. LTD.

Manager

MR. J. E. WALTER, F.H.A.



PRESIDENT'S REPORT

DAVID McFARLANE,
PRESIDENT

1974 will be remembered in Horsham and surrounding areas for quite some time as the year of the Wimmera Base Hospital Appeal.

When we set the Centenary Appeal Organisation a target of \$250,000 I am sure many members of the Board of Management doubted the ability of any appeal, no matter how successfully organised, to succeed in raising such a large total.

The Appeal is now behind us and a sum in excess of \$250,000 has been achieved and is held in readiness for the building programme, currently in progress.

The efforts of Mr. Brownstein, as Director, and Mr. Bethell, as Chairman, together with their sub-committee chairmen, have been recognised in the award of Centenary Governorships. The responsibility is now squarely on the Hospital, to ensure that the support given by the public during 1974, results in a first class Base Hospital facility for the people of the Wimmera.

A number of projects are in progress and are dealt with by the Manager in his report.

The Board of Management was pleased to receive news of the appointment of one of its former members — Dr. Ross Webster — to the Chair of Community Medicine at Melbourne University and we have congratulated Dr. Webster on his appointment.

During the year, the Board received the resignations of Mr. Tony Johns and Mr. Earle Eldridge. Mr. Johns had served the Board since 1962 and during that time held the offices of Vice-President and eventually President in the years 1967 to 1972. While Mr. Eldridge served a short term, he contributed significantly to the Hospital's progress and the Board wishes to record its appreciation of his service.

The Board of Management has recently begun action to streamline the functioning of the Board and its Executive and Advisory Committees by reducing the number of Board members from 15 to 12. The change will result in greater involvement in the functions of the Hospital for each member of the Board.

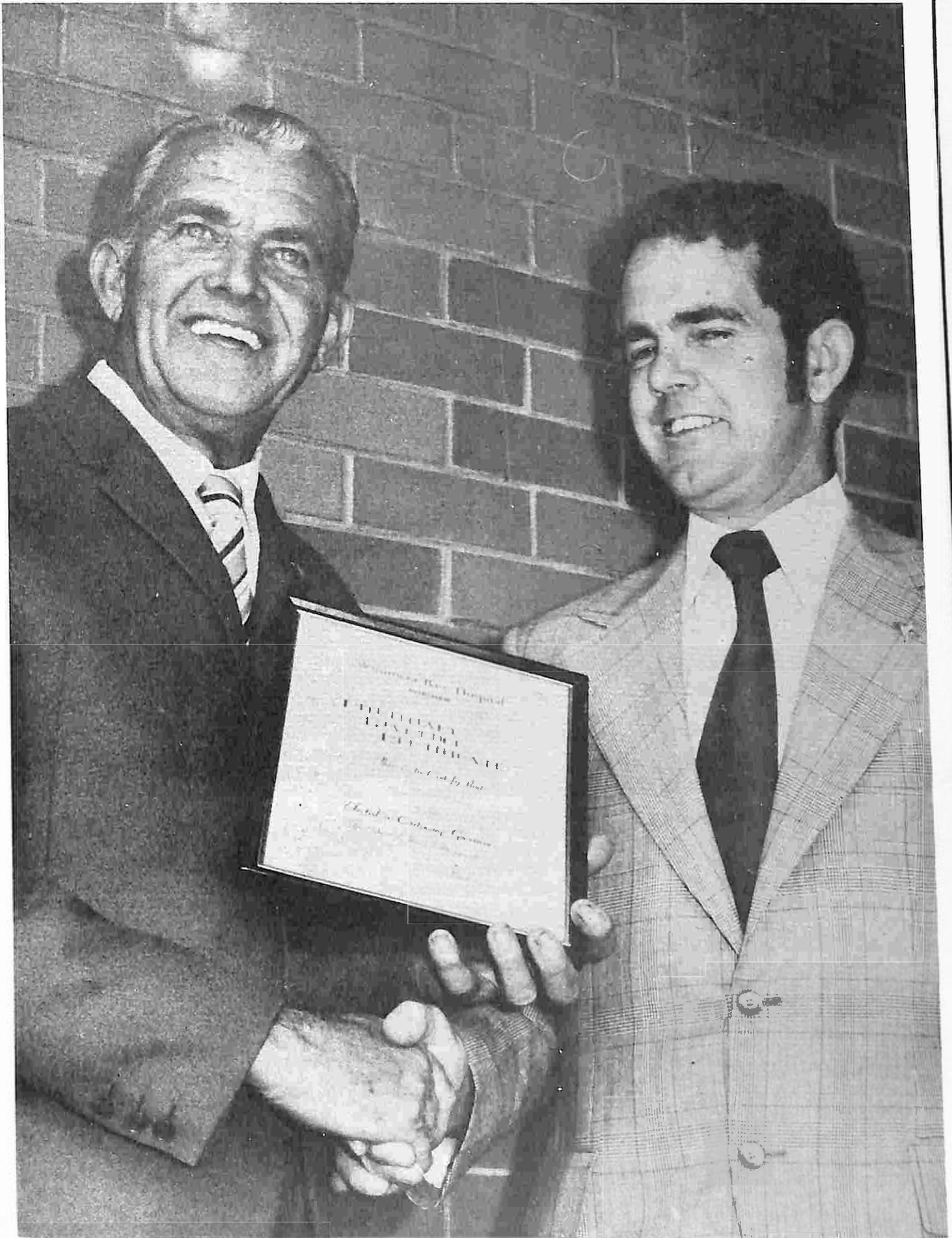
A new venture by the Australian Council of Hospital Standards has commenced in a number of states under the name of Hospital Accreditation. Hospital Accreditation involves the surveying of Hospital Standards by a team selected from the professions of nursing, medical administration and hospital administration. Your hospital has supported this venture and will, in due course, receive a report on an investigation undertaken in the Wimmera Base Hospital.

The Hospital was pleased to receive a visit from the Honorable A. H. Scanlan, Minister for Health, in company with Mr. J. E. McCabe, M.L.A., on Thursday 24th July, 1975.

The Hospital, through members of its Board, and its staff, is keeping in touch with developments in the Health field, through its membership of the Australian Hospital Association, the Victorian Hospital Association, the Wimmera Regional Council and many professional organisations.

I would like to take this opportunity of expressing the Board's appreciation to the staff of the Hospital for their continued efforts to improve and advance the Hospital services and can assure the contributors and Life Governors that the Hospital will continue to bring these improvements to the benefit of the community.

D. J. McFarlane



MANAGER'S REPORT

JOHN WALTER,
MANAGER

The community effort expended in the success of our 1974 Centenary Appeal, has paved the way for the extensive re-building and re-development schemes envisaged at our Hospital. Although the first phase of this scheme is nearing completion it will be many years before the total benefits derived from this Appeal will be seen by the Wimmera community. However, you may rest assured that the final product will be a Base Hospital offering first class facilities for the people of the Wimmera.

Outlined below is a description of the various projects included in our re-development programme, and their progress at this point of time.

Day Hospital: This is an extension of Hospital services, similar in many respects to an outpatients department. It aims to provide planned and supervised treatment for patients who may otherwise require admission to Hospital, and to provide follow-up service for inpatients. Services provided include Physiotherapy, Occupational Therapy, Speech Therapy, Medical and Nursing supervision, Social Welfare, Chiropidy and Hairdressing. Already commenced and due to be completed early in 1976, the Day Hospital complex, the largest of its kind in Victoria, is expected to cost in the vicinity of \$200,000

Water Filtration Plant: Completed in 1974 at a cost of approximately \$70,000 the Water Filtration Plant provides clean filtered water to the Laundry, Boiler House, and to all patient services. A more detailed description of this plant can be found in the Engineer's Report.

50-Bed Frail Aged Unit: Approval has been granted by the Australian Government Department of Social Security for the construction of a 50-bed Frail Aged Unit to increase geriatric services at this Hospital, and drawings are now before the Hospitals and Charities Commission. To be located in the South-East section of the Hospital, this unit is expected to cost approximately \$600,000.

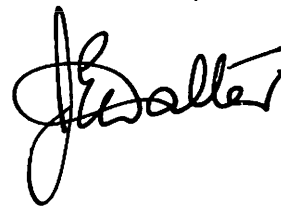
Western Extensions to Main Buildings: A submission is now before the Hospitals and Charities Commission requesting that we proceed to drawings for our proposed extension to the main building, at the Western end, to fourth floor level. This extension will provide the following services.

- extended outpatient/casualty services, including a Dental Clinic and Specialist Consulting and Examination Rooms.
- Intensive/Coronary Care Unit.
- new Medical Records Department.
- a 12-bed Ward Unit for patients requiring acute medical and surgical care.

This past twelve months has also seen the purchase of several items of advanced medical equipment. These include a Weck Operating Microscope for use in Ophthalmology, new equipment for Physiotherapy treatments, and Toshiba equipment for the X-Ray Department.

In addition, we have received approval from the Hospitals and Charities Commission to refurbish Wards 5 and 7 at a total cost of \$15,000.

In April, 1975, we saw the departure of our Assistant Manager, Mr. R. G. Edwards. After four years' service he has left to take up appointment as Manager of the newly formed Moorabbin Community Hospital. Mr. Edwards was awarded a Centenary Governorship of the Hospital for his role in the 1974 Centenary Appeal. The Hospital has been very fortunate to appoint Mr. S. G. Phillips as the new Assistant Manager. Mr. Phillips was formerly Manager of Epworth Hospital in Melbourne, and has previously worked in both the Royal Melbourne Hospital and the Army Medical Corps.



W.B.H. ORGANISATION STRUCTURE

BOARD OF MANAGEMENT

Medical Consultative)
 Committee)
 Medical Advisory Board)
 Chaplains)

Advisory Committees

- (Planning Committee
- (Building and Engineering Services
- (Hospital Inspection Advisory
- (Frail Aged Services
- (Nurse Education
- (Central Linen Services
- (Special Purposes (Medical) Fund

EXECUTIVE COMMITTEE-----

HOSPITAL ADMINISTRATION

MEDICAL ADMINISTRATION

which includes:

- Visiting Medical Staff
- Resident Medical Staff
- Pathology
- Radiology
- Pharmacy
- Physiotherapy
- Occupational Therapy
- Social Work
- Speech Therapy
- Medical Records
- Casualty/Outpatients
- Day Hospital

GENERAL ADMINISTRATION

which includes:

- Business Administration
- Engineering and Maintenance
- Catering
- Domestic Services
- Purchasing and Stores
- Central Linen Service

NURSING ADMINISTRATION

which includes:

- Wards
- Theatres
- Casualty / Outpatients
- C.S. S.D.
- School of Nursing
- Nurses Homes
- Day Hospital

OCCUPATIONAL THERAPY DEPARTMENT

JUDY MORLEY,
CHIEF OCCUPATIONAL THERAPIST



Although the progress of the rebuilding program has necessitated the Occupational Therapy Department to adopt a temporary base lacking the space and facilities of the former building, the various programmes have continued with few modifications.

The Department is staffed by two therapists, Miss J. Morley and Mrs. J. Hall, and two assistants, Miss H. Exell and Mrs. N. McRae. Activities are diverse and may be broadly classified into a number of areas.

Geriatrics: Many of the long-term elderly people within the Hospital are incorporated into the program of the 'Activities Room' under the supervision of the O.T. assistants and a nursing aide. The programme aims to maintain and/or develop maximum physical and mental function in a pleasant social atmosphere. Despite the severe limitations of lack of space and limited patient capabilities, much valuable work is done in this area. Until the completion of the new Day Hospital, the Activities Room also accommodates some of the older outpatients and residents of the geriatrics annexe. During the period from July 1974, to June 1975, the 'Activities' programme has involved 4,912 patients.

Rehabilitation: One therapist is in charge of patients referred for physical and/or psychological rehabilitation. The treatment is usually on a 1:1 basis. Activities are geared to meet individual needs (To develop movement and strength, to aid independence in basic activities, to overcome perceptual problems, to develop confidence). Because follow-up is essential, home visits are often made with the patient before discharge and patients continue to attend as outpatients after discharge. During 1974/75, there have been 839 inpatient rehabilitation treatments and 318 outpatient treatments.

Outpatient Group: A 3-day programme is organised each week by one therapist for a small group of outpatients who, because of emotional, social and/or mental handicaps have difficulty assimilating in the general community work force. The programme is divided between educational and socialisation and workshop activities. These outpatients are paid for their work which includes much of the Hospital printing, candle making and assorted craft activities. At present this group occupies the temporary O.T. Department, but when building is completed, the workshop activities will be accommodated in a separate building adjacent to the new Day Hospital. Outpatient group attendances for 1974/75 totalled 1,059.

Regional Services: Because of the work load at the Base Hospital, the regional service is limited. One therapist attends the Hospitals at Nhill, Dimboola and Warracknabeal on three days each week. Associated visits are also made to hospitals at Murtoa, Edenhope and Stawell. As well as individual rehabilitation treatments for in and outpatients the therapist acts as an advisor, giving support and direction to the handcraft workers working at the Hospitals, and also liaising with management regarding suggestions for improving present services.

The last year has provided many challenges for the Occupational Therapy Department but, no doubt, new facilities and extension of services will provide even more.

A handwritten signature in cursive script, reading 'J Morley'. The signature is written in black ink on a white background.

SPEECH THERAPY DEPARTMENT

FRANCES HANNAFORD,
SPEECH THERAPIST



The Speech Therapy Department provides a service for both in-patients and outpatients. Patients treated are of all ages, from young children to aged pensioners.

The types of speech disorders treated range from slow speech and language development, stuttering, paralysis of the muscles, necessary for speech and brain injury resulting from strokes, car accidents and birth trauma.

In the past twelve months, 79 patients have been referred for therapy. Of these, 53 were children (mostly pre-school age) and 13 of the remaining 26 adults were hospital inpatients.

Since July 1974, the speech therapy department has obtained an audionete which provides a means for basic assessment of hearing problems.

Although this service is located at the Wimmera Base Hospital, it is provided for the whole region. Generally patients are brought in from the regional hospitals by ambulance. However, on occasions the Speech Therapist does go out to Regional Hospitals and Kindergartens.

PHYSIOTHERAPY DEPARTMENT

MARY STARR,
CHIEF PHYSIOTHERAPIST



The Physiotherapy Department is staffed by three full-time Physiotherapists, one of whom provides a continued Regional service to Warracknabeal, Dimboola and Nhill Hospitals on a sessional basis, one part-time Physiotherapist, and a Receptionist viz: Mrs. Mary Starr, Miss Judith Wood, Mr. David Britten, Mrs. Madeliene Edgar, Mrs. Aileen Hower.

In November 1974, it was decided to relocate the Department in the old T.B. Chalet, thus providing ample space for a much needed rehabilitation section. With the inclusion of fixed parallel bars, a mirror, a suspension room, a mat room, and an electrically operated tilting table, it is now possible to provide much more comprehensive rehabilitation of the chronically handicapped than ever before.

It has also been possible to provide more efficient and accurate diagnosis and treatment for those with peripheral neurological impairment by the purchase of both diagnostic and treatment machines, and the recent purchase of an electrically operated intermittent traction table, has already relieved many headaches and backaches in the community.

The following table illustrates the number of treatments carried out during the last financial year, 1974/75:

Wimmera Base Hospital		Regional	
Inpatients	4,148	Inpatients	592
Outpatients	4,561	Outpatients	2,371
Ante and Post Natal	298	Ante and Post Natal	427
	9,007		3,390

COMBINED TOTAL: 12,397

I feel that the above figures illustrate a growing awareness of the place of Physiotherapy in maintaining the health of the community, and we look forward to providing an even more extensive service when the Day Hospital is completed.

NURSING SERVICES

JOAN MATUSCHKA,
MATRON

The School of Nursing has again increased the theoretical content of the Nurse Training Programme over the past twelve months. All Half Study Days have been increased to Full Study Days and Phase I students now receive a series of lectures in Physics and Science at the Horsham Technical School.

The Medical Staff have also given valuable assistance to the School by increasing and expanding their Lecture Programmes and with the Clinical Teaching of Student Nurses throughout the year.

Graduation: The Annual Graduation Ceremony was held at the Lutheran Hall on March 25th and Mr. J. McClelland, Manager of the Geelong Hospital, was the guest speaker.

Miss Wendy Fulton was presented with the Ryan Prize, and Miss Roslyn Sykes received the Past Trainees Prize. Miss Marjorie Light received the prize for the highest aggregate over the three years training.

Certificates were presented to the following graduates: Marilyn Borgelt, Rosemary Carracher, Wendy Fulton, Nola Godden, Jennifer Hawkins, Christine Lamenta, Elizabeth McKenzie, Judith Miatke, Raelene Netherway, Lesley Schubert, Roslyn Sykes, Marjorie Light, Patricia Fereday, Karen Kimberley, Julie Merrett, Ruth Quick, Suzanne Rowe, Shirley Sleep, Adele Trewin.

Sister L. Hoffman attended a three-week Work Study Course at the Mayfield Centre in April, and Sisters N. Krelle, M. Donovan, J. Amos and E. Natrass have attended the two-week Middle Management Course at the Mayfield Centre during the past twelve months.

In addition, trained staff have attended a variety of Study Days and Seminars on subjects related to patient care, during the year.

A number of changes and increases have been made in the Nursing Staff Establishment over the past twelve months. Sister N. Wright commenced duties as Assistant Matron in May 1975 and Sister L. Hoffman commenced duties as Charge Sister for the proposed Central Sterilizing Department. Sister M. Jobe was appointed as Sister in Charge of Ward 2.

The increases in the daily average of patients and in nurse teaching hours have made higher demands on already overcrowded wards, but the Ward Sisters have still managed to maintain their high standard of patient care over the past twelve months.

J M Matuschka



ENGINEERING DEPARTMENT

**JOHN IRELAND,
ENGINEER**

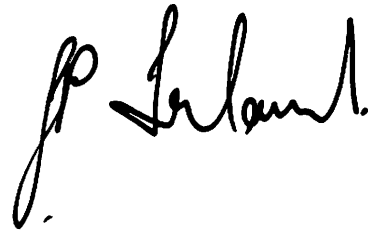
This year has seen the commissioning of the Filtered Water Plant. This was supplied by Commando Products of Adelaide and installed by Muller Services. The plant is working well and the clean, clear water is appreciated by all areas of the Hospital.

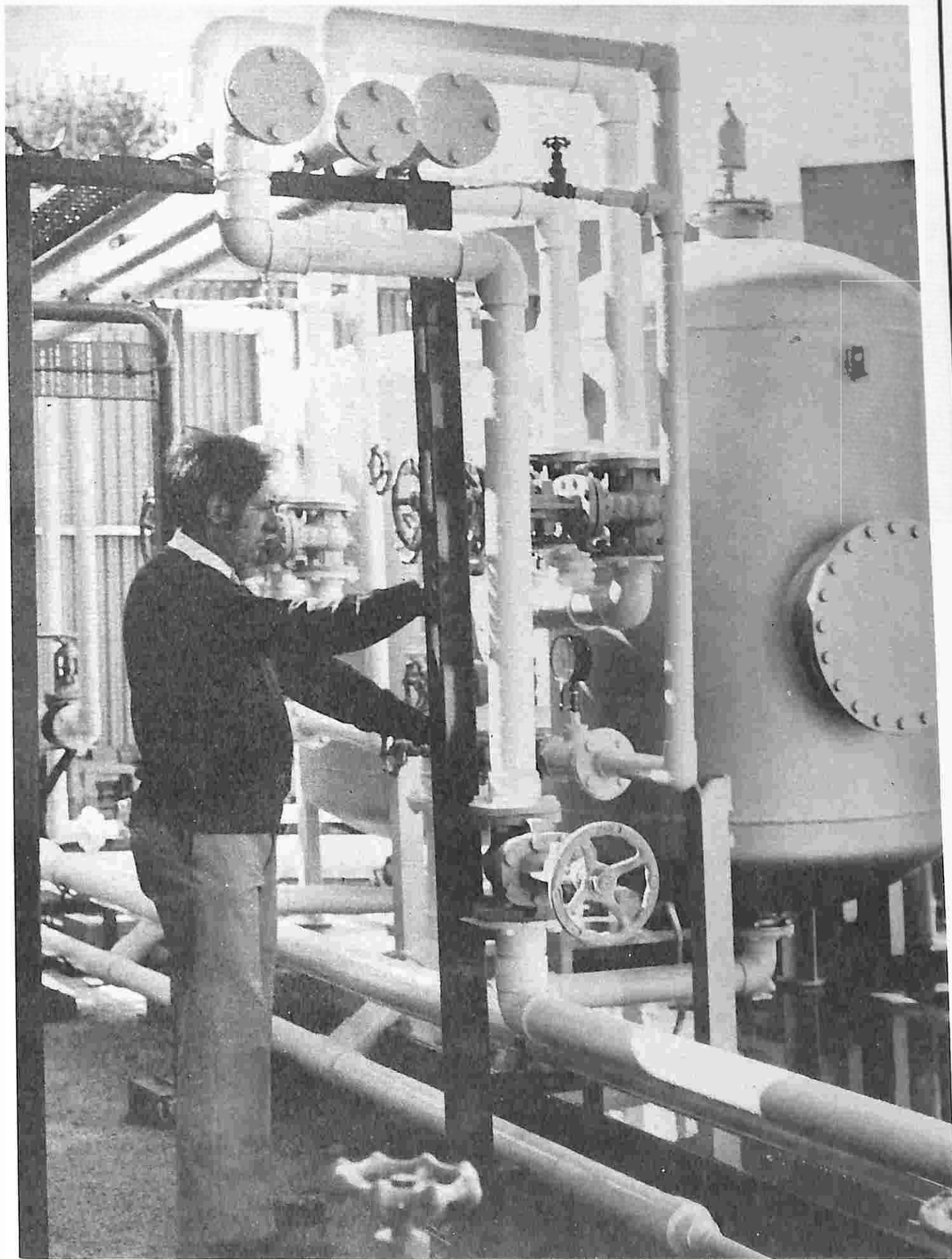
The Maintenance Staff installed 2,000 feet of pipe around the Hospital to supply areas with filtered water. The main hospital, Pathology, Kitchen, X-Ray, Laundry, Boiler House, Services Building and Nurses' Homes are all using filtered water.

To enable the service road to continue past the Boiler House and Sub Station, the covered ways had to be removed. To enable this to be done, all the services carried on the covered way had to be re-run in a new concrete tunnel under the road. This was also done, mainly by the maintenance staff. The services were: Steam Condensate; Hot Water; Heating; Electrical Mains; Lighting; Fire Alarms; Telephones.

A new multiple purpose machine tool was purchased for the workshop and works extended to include a welding bay. We now have apprentices in Carpentry, Fitting and Turning, Electrical and Painting.

This year, S. Minne resigned after two years' service and Arch Constable after 18 years' service. Arch Constable has seen many changes over the years. Probably the one with the most impact was the changeover to the automatic boiler from the wood-fired ones. Ron Orchard was appointed Plumber in June 1975.





PATHOLOGY DEPARTMENT

**DR. G. B. LEYTON,
PATHOLOGIST**

The volume of work, passing through the Department of Pathology continues to increase at the expected rate of approximately 12 percent per year.

During the last year the Sub-Departments examined the following number of specimens:

Bacteriology	2,669
Biochemistry	4,285
Haematology	6,234
Histology	1,283
Serology and Cross Matching of Blood	2,908

This volume of work placed a great strain on the laboratory staff in their very limited space. During the year it was found necessary to utilise automated processes more fully, even at the expense of some delay in reporting results which were not regarded as urgent.

Even with this rationalisation, it is doubtful if the volume of work could have been handled without some loss of accuracy, except for the departments good fortune in having no staff changes during the year.

The car collection service provided for country centres has been very popular and also has helped in the smooth running of the laboratory, since it has ensured that specimens from the country arrive at regular times rather than haphazardly throughout the day.

G. B. Leyton

MEDIBANK

**STEPHEN PHILLIPS,
ASSISTANT MANAGER**

The agreement by the Victorian and Australian Governments to share costs of maintaining public hospitals in Victoria is a topic currently under review by the Board of Management.

The impact of Medibank upon Wimmera Base Hospital can only be enormous, and the hospital is looking forward to the challenge of providing the highest possible standards of care under these new arrangements.

At the end of the period under review, it was not clear as to the precise changes which would be necessary, nevertheless, the Board of Management is determined that our reputation as a hospital providing care will not suffer.

Stephen Phillips

WIMMERA HOSPITALS GROUP LINEN SERVICE
STATEMENT OF INCOME AND EXPENDITURE FOR
THE YEAR ENDED 30th JUNE, 1975

1973/74:		1974/75
	Income:	
\$170,533	Service Charges	\$175,938
1,340	Collective Buying Subsidy	1,190
—	Income from Investments	169
1,069	Cash Discount on Purchases	33
<u>\$172,942</u>		<u>\$177,330</u>
	Expenditure:	
\$ 2,593	Administration	\$ 6,188
116,613	Laundry	139,824
24,769	Linen	45,360
8,868	Mending and Manufacturing	6,649
10,980	Transport	12,844
<u>\$163,823</u>		<u>\$210,865</u>
9,119	Surplus (Deficit) for year	(33,335)
<u>\$172,942</u>		<u>\$177,330</u>

WIMMERA HOSPITALS GROUP LINEN SERVICE
BALANCE SHEET AT 30th JUNE, 1975

1973/74		1974/75
	ASSETS	
	Current Assets:	
24,951	Capital — Cash at Bank	11,809
24,407	Sundry Debtors	18,241
54,024	Linen In Use	54,023
15,633	Stores	20,355
6,378	Accrued Income	7,372
<u>\$125,393</u>		<u>\$111,800</u>
	Deferred Assets and Investments:	
8,000	Maintenance (Interest Bearing Deposits)	8,000
18,000	Capital (Govt. Bond & Interest Bear. Dep.)	18,000
<u>\$ 26,000</u>		<u>26,000</u>
	Fixed Assets At Cost:	
296,184	New Buildings	316,494
172,723	Laundry Plant and Equipment	174,869
7,161	Linen Service Plant and Equipment	7,161
2,624	Mending and Manufacture Equipment	2,624
9,268	Motor Vehicle and Transport Equipment	9,843
1,791	General Plant and Equipment	1,791
<u>489,731</u>		<u>512,782</u>
		312,782
22,544	Less: Provision for Depreciation Plant and Equipment — Capital	40,553
<u>\$467,207</u>		<u>472,229</u>
<u>\$618,600</u>	TOTAL ASSETS:	<u>\$610,029</u>
	EQUITIES	
	Current Liabilities:	
17,888	Bank Overdraft (Maintenance)	6,794
5,884	Provision of Maintenance and Repair	7,001
12,318	Provision for Long Service Leave	12,943
38,890	Accrued Expenses Sundry Creditors and Employees Super., Assessment	15,364
<u>\$ 94,980</u>		<u>42,102</u>
	Deferred Liabilities:	
—	Other Creditors — Operating Fund	174
		174
	Capital:	
421,165	Capital Fund	465,299
16,792	Provision for Asset Replacement — Reserve Fund	16,792
85,663	Operating Fund	85,662
<u>\$523,620</u>		<u>567,753</u>
<u>\$618,600</u>	Total Equities:	<u>\$610,029</u>

WIMMERA BASE HOSPITAL

MAINTENANCE ACCOUNT

STATEMENT OF INCOME AND EXPENDITURE FOR YEAR ENDED
30th JUNE, 1975

1973/74	Income	1974/73	%
	Government Grants and Payments:		
\$ 871,708	Government Grant	\$1,270,046	47.1
42,751	Pharmaceutical Benefits	60,536	2.2
4,633	Other	9,643	0.4
<u>\$ 919,092</u>		<u>\$1,340,225</u>	<u>49.7</u>
	Patients' Fees:		
\$ 61,857	Non Qualified Inpatients .. (M.C.A., W.C., Repat.)	\$ 63,491	2.3
192,174	Qualified Public Inpatients	185,366	6.9
648,642	Qualified Non Public In- patients	935,070	34.7
94,236	Outpatients Fees	120,685	4.4
<u>\$ 996,909</u>	TOTAL PATIENTS' FEES	<u>\$1,304,612</u>	<u>48.3</u>
	Miscellaneous Income:		
\$ 169	Charitable Contributions ..	\$ 247	
10,620	Income, Sundry Sources	9,985	
26	Income from Investments	87	
<u>\$ 10,815</u>	TOTAL MISC. INCOME	<u>\$ 10,319</u>	<u>0.4</u>
1,926,816	Total Operating Income ..	2,655,156	98.4
1,335	Non Operating Income	7,253	0.3
1,928,151	TOTAL INCOME: ..	2,662,409	98.7
69,981	Deficit for the year	35,404	1.3
<u>\$1,998,132</u>	TOTAL:	<u>\$2,697,813</u>	<u>100.0</u>
	Expenditure:		
\$1,481,792	Salaries and Wages	\$1,974,197	73.2
91,264	Administration ..	141,209	5.2
92,477	Dietary	103,733	3.8
13,357	Housekeeping	15,953	0.6
89,088	Linen, Laundry, Sewing	94,062	3.5
24,031	Lighting, Power, Heating	34,572	1.3
79,231	Maintenance on Buildings, Plant and Equipment	136,253	5.1
120,853	Medical and Surgical	171,733	6.4
<u>\$1,992,093</u>	TOTAL OPERATING EX- PENDITURE: ..	<u>\$2,671,712</u>	<u>99.1</u>
6,039	Non Operating Expend. ..	26,101	0.9
<u>\$1,998,132</u>	TOTAL:	<u>\$2,697,813</u>	<u>100.0</u>

AUDITOR'S REPORT

We report that we have examined the Accounts of the Wimmera Base Hospital for the year ended 30th June, 1975. In accordance with usual hospital accounting practice, provisions have not been made for Depreciation of Buildings, Plant and Equipment. Subject to the foregoing, in our opinion the Balance Sheet and Statements of Income and Expenditure are properly drawn up so as to give a true and fair view of the state of the Institution's financial affairs at 30th June, 1975, and of the financial results of its services for the period ended on that date. The accounting and other records examined by us have been properly maintained.

GREEN, TAYLOR AND GREENALL, Chartered Accountants.

WIMMERA BASE HOSPITAL

BALANCE SHEET AS AT 30th JUNE, 1975

ASSETS:

1973/74		1974/75
\$ 110	Current Assets:	\$ 110
	Cash in Hand	
	Cash at Bank:	
1,000	Maintenance (Manager's Advance) ..	\$ 1,000
	Maintenance Wages Advance ..	5,000
1,270	Patients' Trust Deposits	21,700
5,134	Special Purposes	9,891
212	T. F. Ryan Prize	138
<u>\$ 7,726</u>	Total Cash in Hand and at Bank	<u>\$ 37,729</u>
18,858	Stock	28,448
242,633	Patients' Fees Outstanding after providing for doubtful debts	297,121
41,311	Income Accrued	36,605
1,645	Prepaid Expenses	1,645
11,681	Debtors — other	11,782
6,364	Debtors Special Purposes Medical	6,443
53,999	Debtors Group Linen Service Capital	—
<u>\$ 376,491</u>		
	Investments (Govt. Securities, Banks):	
\$ 800	Endowment	\$ 800
	Reserve	1,399
60,236	Special Purposes Frail Aged	63,703
28,000	Special Purposes (Medical)	38,225
700	T. F. Ryan Prize	700
200	Maintenance	200
90,000	Capital	275,500
<u>\$ 179,936</u>	Total Investments	<u>\$ 380,527</u>
<u>\$ 564,153</u>	TOTAL CURRENT ASSETS	<u>\$ 800,410</u>
	Fixed Assets:	
\$1,069,343	Land and Buildings at Cost	\$1,310,855
420,265	Plant and Equipment at Cost	453,963
<u>\$1,489,608</u>	Total Fixed Assets	<u>\$1,764,818</u>
<u>\$2,053,761</u>	TOTAL ASSETS	<u>\$2,565,228</u>
	EQUITIES:	
	Current Liabilities:	
\$ 46,931	Creditors Maintenance	\$ 79,585
81,627	Accrued Expenses	93,744
	Advance Income	1,978
11,555	Other Creditors Maintenance	11,691
140,417	Provision for Long Service Leave	176,866
161,674	Bank Overdraft — Maintenance	178,217
119,994	Bank Overdraft — Capital	18,542
<u>\$ 562,198</u>		<u>\$ 560,623</u>
	Endowment, Special Purposes and Other Funds:	
800	Endowment	800
	Reserve	1,399
60,236	Special Purposes Frail Aged	65,869
1,270	Patients' Trust Accounts	21,700
39,498	Special Purposes Medical	52,393
912	T. F. Ryan Prize	838
<u>\$ 102,716</u>		<u>\$ 142,999</u>
	Capital:	
\$1,513,613	Hospital Capital	\$2,021,776
(124,766)	Maintenance Fund Accum. Deficit	(160,170)
<u>\$1,388,847</u>		<u>\$1,861,606</u>
<u>\$2,053,761</u>	TOTAL EQUITIES	<u>\$2,565,228</u>

SPECIAL PURPOSES (MEDICAL) FUND
FOR YEAR ENDED 30th JUNE, 1975

INCOME		EXPENDITURE	
Fees Received direct from Insurers	\$1,222	Payment of Bonuses, Prof. Membership and Subscriptions to Prof. Journals	\$1,926
40% of O.P. Fees received by Pathology Dept.	32,893	Travelling Expenses	1,500
	<u>34,115</u>	Transfer to Investments	28,000
Less Bad Debts	548	Miscellaneous	560
Realization of Investments	28,000	Transfer to Capital Fund for Purchase of Plant and Equipment	19,521
Interest on Investments ..	2,835	Surplus for the Period	12,895
	<u>\$64,402</u>		<u>\$64,402</u>

CAPITAL FUND ACCOUNT FOR YEAR ENDED 30th JUNE, 1975

3LK Appeal Expenses	\$359	Balance 1st July, 1974	\$1,513,613
Interest on Overdraft	8,745	Transfer Special Purposes Fund Medical	19,521
Transfer to Wimmera Hospitals Group Linen Service	72,151	Transfer C'tenary Appeal	240,518
Balance 30th June, 1975	2,021,776	Cash Receipts including: Donations, Gov. Grants	323,733
	<u>\$2,103,031</u>	Interest on Investm'ts	5,646
			<u>\$2,103,031</u>

COMPARATIVE FINANCIAL STATEMENTS

FIVE YEARS IN REVIEW — FIGURES AS AT 30th JUNE IN EACH YEAR

	1971	1972	1973	1974	1975
Income:	\$	\$	\$	\$	\$
Govt. Grants & Payments	487,459	578,562	707,509	919,092	1,340,225
Patients' Fees ..	520,040	713,032	820,430	996,909	1,304,612
Miscellaneous ..	7,413	7,829	8,796	10,815	10,319
Total Operating Income	1,014,914	1,299,423	1,536,735	1,926,816	2,655,156
Non Operating Income ..	2,292	2,520	1,636	1,335	7,253
	<u>1,017,206</u>	<u>1,301,943</u>	<u>1,538,371</u>	<u>1,928,151</u>	<u>2,662,409</u>
Expenditure:					
Salaries and Wages	718,250	937,086	1,127,525	1,481,792	1,974,197
Administrative	61,052	71,203	90,516	91,264	141,209
Dietary	60,549	63,647	71,168	92,477	103,733
Housekeeping..	7,367	8,254	9,921	13,357	15,953
Linen, Laundry, Sewing	58,082	67,967	74,064	89,088	94,062
Power, Lighting, Heating	17,766	17,985	17,338	24,031	34,572
Maintenance ..	38,055	40,088	60,851	79,231	136,253
Medical and Surgical	65,246	83,745	113,895	120,853	171,733
Total Operating Expenses	1,026,367	1,289,975	1,565,278	1,992,093	2,671,712
Non Operating Expenses	8,932	12,308	8,859	6,039	26,101
	<u>1,035,299</u>	<u>1,302,283</u>	<u>1,574,137</u>	<u>1,998,132</u>	<u>2,697,813</u>

COMPARATIVE STATISTICS

FIVE YEARS STATISTICS ENDED 30th JUNE, 1975

	1971	1972	1973	1974	1975
	\$	\$	\$	\$	\$
Total Inpatients Adm.	2,917	2,876	3,224	3,351	3,345
Total Inpatients Treat.	3,041	3,009	3,553	3,494	3,489
Total Bed Days ..	45,271	45,639	49,003	49,883	50,785
Daily Average Occupancy of Beds	124.0	124.7	134.3	136.7	139.1
Average Stay of Patients (Days)	14.9	15.2	14.6	14.2	14.6
Total Outpatients Treated	11,994	13,754	14,182	16,807	19,078
Total Outpatients Attendances	21,242	20,099	21,019	23,425	26,182

SISTER M. E. CRAIG



As the longest serving Sister on the Nursing Staff, we would like to pay tribute to the services made by Sister M. E. Craig to the Base Hospital.

Born in Leeton, New South Wales, Sister Craig commenced her training at the Base Hospital in November 1938 and has remained in the township of Horsham ever since. On the 14th September, 1945, Sister Craig became a member of the trained nursing staff of this Hospital, working in Ward Seven at a weekly salary of 6 shillings and 8 pence. Ironically enough, she is now Sister-in-charge of Ward Seven, the very same ward in which she began her career as a trained nurse.

Over the past 30 years, Sister Craig has seen and coped with quite significant changes in the treatment of patients at this Hospital. The most notable of these, she suggested, were the great advances made in the quality and quantity of medical equipment and the introduction of many forms of disposable goods. She added that the most noticeable change she has experienced in the wards over the years has been the decreased average bed stay per patient.

Averse to speaking about herself, Sister Craig instead wished to compliment all the recent trainee nurses for their efficiency and dedication to duty. She believes that the improved conditions and the greater opportunities for thorough training have been reflected in the high standards that these trainee nurses are able to achieve.

To Sister Craig, for a lifetime of service to the Base Hospital and to the Wimmera community, we hope this tribute in some small way rewards you for your efforts.

R. W. (Ron) SHEPHERD

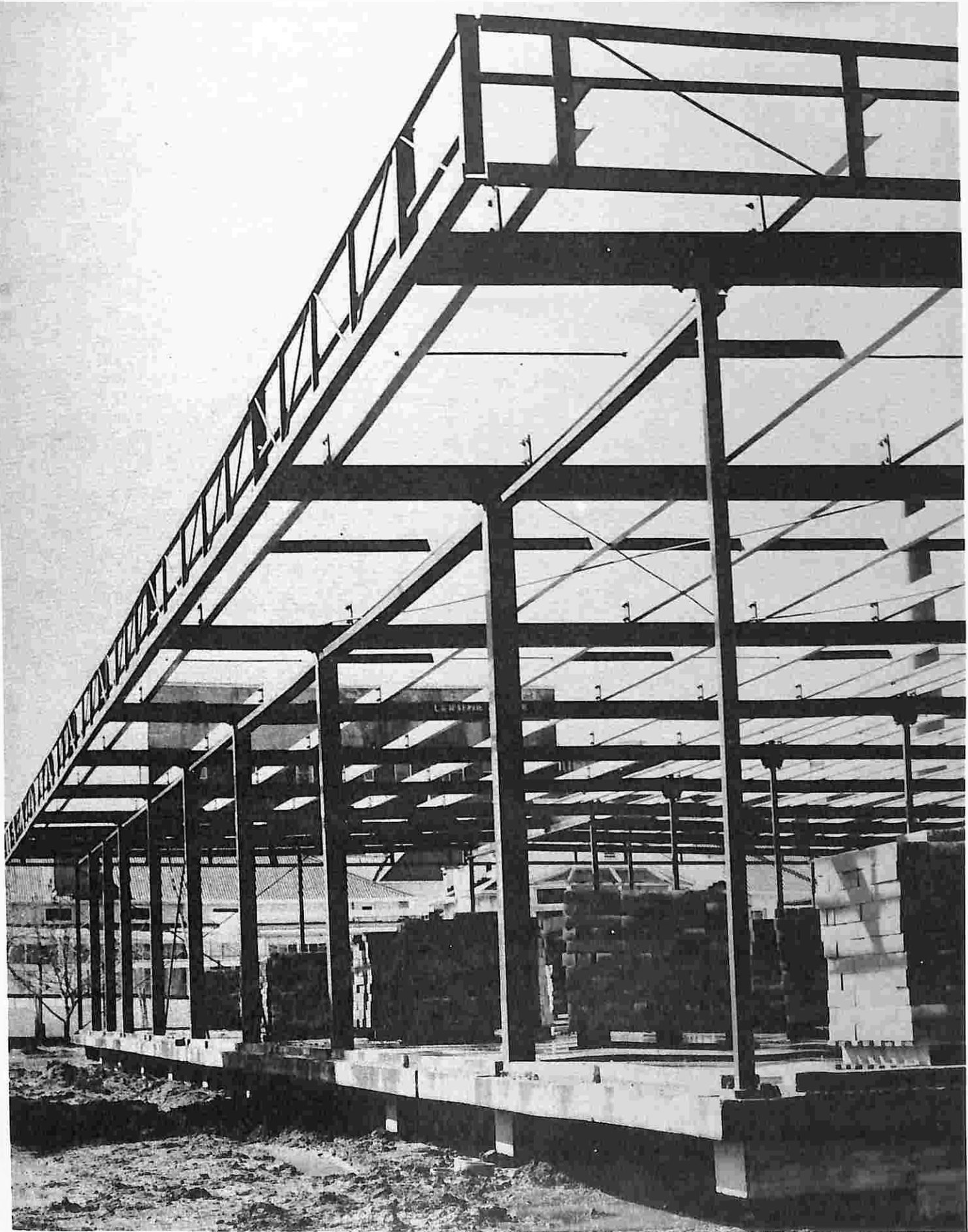


In this year's Annual Report, the Hospital wishes to acknowledge the services to the Wimmera Base Hospital, and to Horsham in general, made by Mr. Ronald William Shepherd.

A resident of Horsham since 1925, Mr. Shepherd first became actively involved in Hospital affairs in the late 1940's when he was made a Life Governor, following a donation of £1,800 by the Apex Club to the Hospital Building Appeal. Soon after Mr. Shepherd was asked to join the Board of Management of the Hospital, a position he has retained ever since. His active participation over the last 25 years has included one period of 3 years as President of the Board from 1952 to 1955.

During this period on the Board, Mr. Shepherd has represented the Hospital on the Country Hospitals' Association, and through this he became a Member of the Victorian Hospitals' Association. For the past 10 years, Mr. Shepherd has been a Member of the Board of this Association, and is at present in his second year as Chairman of the Board. By informing the Board of Management of the Base Hospital on the policies of this Association, Mr. Shepherd has helped create harmonious working relations between the two bodies.

As Director-Manager of a family clothing store, a position he has also held since 1946, one wonders where Mr. Shepherd finds the time to meet all the commitments that these positions demand. Yet, contrary to this, his interest in the welfare of the people of Horsham has led to his involvement in many other community projects and activities, including a term of nine years as City Councillor and one year as Mayor of Horsham.



WIMMERA HOSPITAL'S GROUP LINEN SERVICE REPORT

**RON MIATKE,
MANAGER**

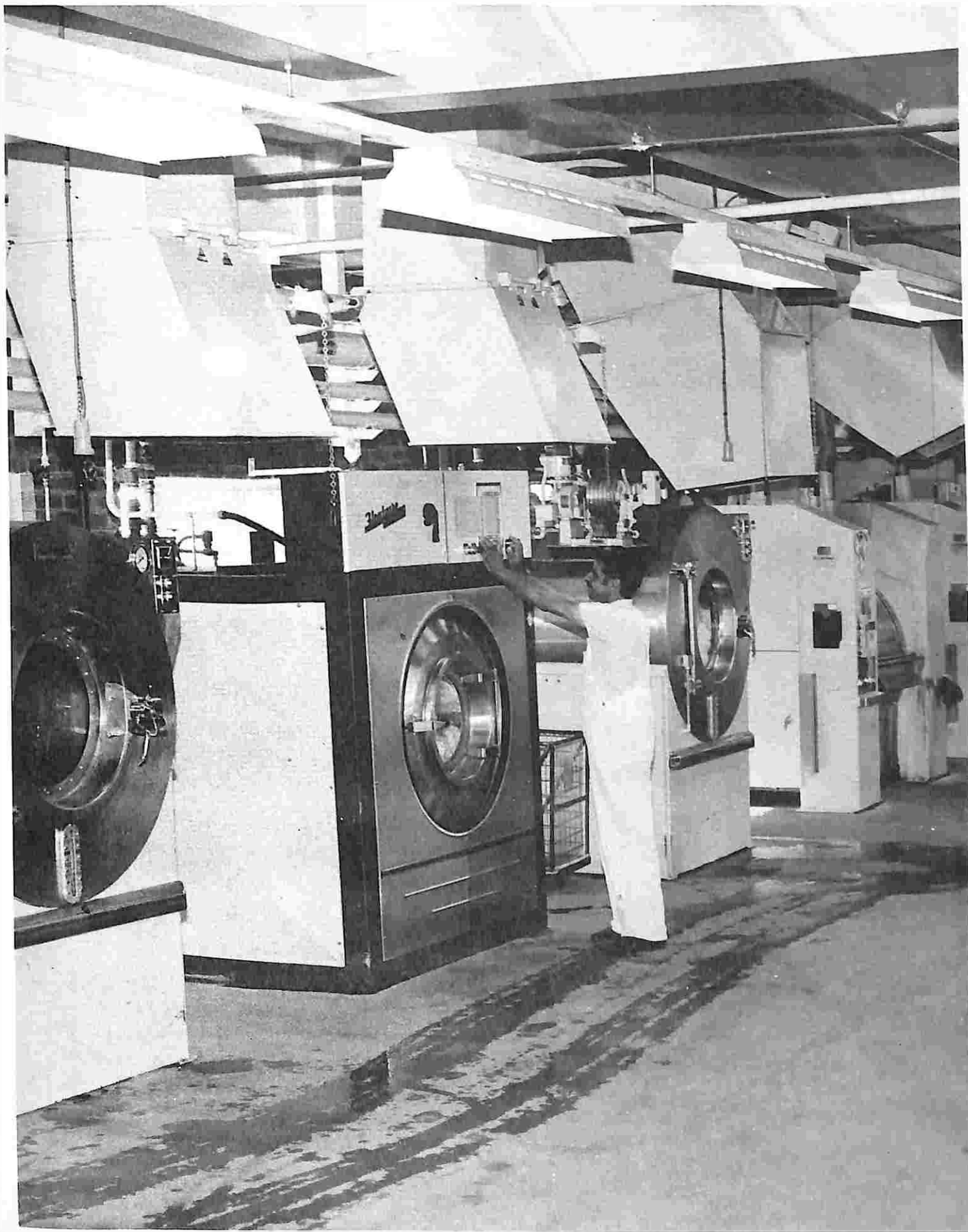
As a self-supporting entity employing a total staff of 21, the Wimmera Regional Hospitals' Group Laundry Service, like most industries today, has had to cope with the problem of inflation. With the price of linen steadily rising, and wages constantly being reviewed, it became necessary to once again increase the charge for laundry services. The new cost for these services is 32 cents per kilo, compared to the 28 cents per kilo previously charged.

Despite this increase, we believe the Group Laundry Service is able to provide a more efficient and economical service than could be provided by individual institutions. This point is enhanced by the fact that we now have a total of 18 participating institutions in our service. These being: Wimmera Base, Wimmera Ambulance, Kaniva, Nhill, Jeparit, Dimboola, Stawell, Murtoa, Rupanyup, Minyip, Warracknabeal, Avonlea, Beulah, Eventide, Goroke, Allambi, Rainbow and Birchip.

Our new Group Laundry, completed early in 1974, is functioning smoothly and providing staff with excellent equipment and working conditions. Designed to cater for a maximum weekly total output of 15 tonnes, we are currently operating at a figure in excess of 11 tonnes per week.

During the last financial year, we saw the departure of several staff members, with many years' service to the Group Laundry. To Mrs. M. Avery, Mrs. F. Power, Mrs. P. McCourt, and Mr. A. Ball, we say thank you for a job well done.

R. E. Miatke



VISITING MEDICAL SERVICES

DR. T. V. (Tom) WALPOLE,
CHAIRMAN

This year has not seen any changes in the Visiting Medical Staff.

The Hospital has been approved for Family Medicine training but so far no junior trainees have been attached to the Hospital.

However, Dr. Chris Foord and Dr. Howard Grey have been approved as advanced trainees and Dr. Anna McBain has been involved in a retraining program for women graduates. It is hoped that an extension of Family Medicine attachments in Horsham will eventually provide some relief for solo practitioners in the Wimmera.

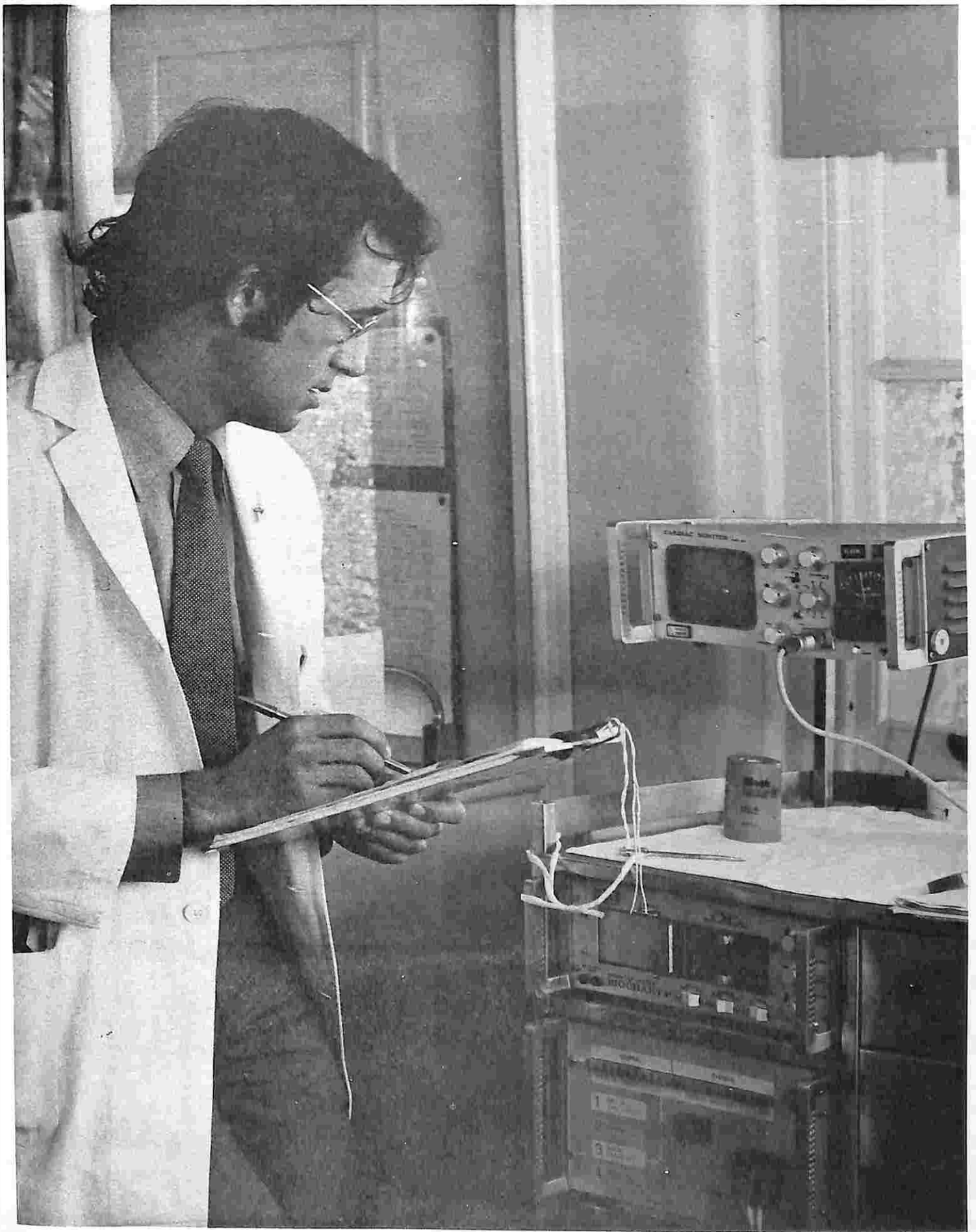
During the latter part of the year Dr. Rodney Abud spent some months on study leave in England and America and his experience should prove beneficial to practitioners and patients in this area.

Post graduate teaching has continued at a high level with a good response from the whole Wimmera area.

The changing politics of medical practice has absorbed a disproportionate amount of time during the year and we look forward to a coming year of increasing stability in these matters so that real medical progress may be made.

MEDICAL STAFF

- R. E. ABUD M.B., B.S., F.R.A.C.P.
(Visiting Physician)
- E. G. BROWNSTEIN, M.B., ChB., F.R.C.S. (Edin.), F.R.A.C.S.
(Visiting Surgeon)
- B. C. CURRIE, M.B., B.S., D.P.M.
(Visiting Psychiatrist)
- C. H. FOORD, M.B., B.S., Dip. Obst., R.C.O.G.
(Visiting Assistant Medical Officer)
- J. HOWARD GREY, M.B., B.S.
(Visiting Assistant Medical Officer)
- P. P. HASLAU, M.B., B.S.
(Visiting Medical Officer)
- G. B. LEYTON, M.A., M.D., D.C.P., F.R.C. PATH, F.R.C.P.A.
(Pathologist)
- G. MANGAN, M.R.C.S., L.R.C.P., D.O. (Lond.)
(Visiting Ophthalmologist)
- A. McBAIN, M.B., B.S.
(Visiting Medical Officer)
- E. T. MILLER, M.B., B.S., M.R.C.O. G.
(Visiting Obstetrician and Gynaecologist)
- J. S. MORLEY, M.B., B.S., F.R.C.S., F.R.A.C.S., L.R.C.P.
(Visiting Orthopaedic Surgeon)
- M. M. O'BRIEN, M.B., B.S., F.R.A.C.G.P.
(Visiting Medical Officer)
- R. A. TAYLOR, M.B., B.S. (Lond.), L.M.S.S.A.
(Visiting Medical Officer)
- B. M. TEO, M.B., B.S., F.R.A.C.S.
(Visiting Surgeon)
- T. V. WALPOLE, M.B.E., M.B., B.S., F.R.A.C.G.P.
(Visiting Medical Officer — Chairman of Visiting Medical Staff)
- L. WONG SHEE, M.B., ChB., M.R.C.R.A.
(Radiologist — Medical Director)



LADIES' AUXILIARY

BETTY SMITH,
PRESIDENT

It is my privilege and pleasure to present the Annual Report for the Wimmera Base Hospital Ladies' Auxiliary for 1974/75.

It has been a most successful year, all our functions have been very well supported and a record \$8,537 was raised. During the Hospital Appeal last year, we were able to donate \$11,239, and this year our main objective will be to provide furnishings for the first 50-bed Frail Aged Unit.

The Horsham and District people have been most generous with their support, which has enabled us to raise such a large sum of money and our special thanks go to the Church Guilds and District Ladies' Clubs for donating dinner raffles and providing goods for the Opportunity Shop, which this year has raised a record \$3,024. We would also like to thank the Mail-Times, 3WV and 3LK for publicity, the Apexians for their help at functions, donors of prizes and goods for raffles, particularly Mrs. Stewart, who donates the doll annually, Mr. Edwards and Mr. Barry Harrison for auditing, Miss Healey and the Catering Staff for their help during the year, and Mr. Leith and Hospital Staff on their assistance. We are also very grateful to Mr. Greg Block for presenting a most successful "Floral Art Spectacular" at La Fontana.

Other social functions for the year were: A Casserole Luncheon and Floral Art demonstration by the Goroke Floral Art Group, the Annual Garden Party, with a talk on potting plants by "Bonney", the Golden Anniversary Wine and Dine with a Melodrama presented by the Horsham players and items by Mr. Peter Gray, a Garden Luncheon at "Como", the home of Mr. and Mrs. E. Jackman, with a cosmetic demonstration by Coty, and several Coffee and Sherry Parties held in members' homes.

It is 50 years since the Auxiliary was formed, and the City Council sent a letter in recognition of our service to the hospital over the years.

My sincere thanks to all Office Bearers for their help during the year, and all Auxiliary members for their generous and loyal support.

To the incoming Office Bearers, my best wishes, and may we all continue to work together for the improvement of our Hospital.

Betty Smith



BARKUMA

KEN DOWSLEY,
PRESIDENT

Barkuma has now completed 18 months service to the Wimmera Base Hospital, following its inception early in 1974.

The initial fund-raising efforts were in support of the Centenary Appeal and resulted in a contribution of over \$2,000 in September of the first year.

In June this year, another \$750 was presented to the Wimmera Base Hospital.

As the Appeal is now concluded contributions are being directed toward a particular item of the re-building — a 12-bed extension to the Ward 3 area.

Barkuma has a membership of about 30 and they, together with their wives, husbands and friends have been involved in a wide range of activities. These are aimed sometimes at money raising and sometimes at social enjoyment, but such is the approach of those partaking that both aspects generally become entwined.

During the last year, activities included a fashion parade with John Claringbold, a wine tasting dinner dance and a basket cabaret, catering for several local events, raffles, a film evening, a car trial, stewarding at the Apex Fishing Contest and excursions to the theatre in Horsham and to the wine cellars at Great Western.





LIFE GOVERNORS

ALFORD, MRS. L.
 ANDERSON, MR. A. S.
 ANDERSON, MRS. A. N.
 AUMANN, SEN., MRS. H. W.
 BEYNON, MR. J. H.
 BRIDGE, MR. A. L.
 BUTLER, MR. L. H.
 CAIN, MRS. T.
 CARTER, MRS. J.
 CATHCART, MISS D.
 CATHCART, MISS R.
 CHARLES, MRS. R. E.
 CLAYTON, MR. S.
 CONROY, MR. T. E.
 CORNER, MRS. P.
 DENEYS, MR. C.

DRAFFIN, MR. I.
 DUMESNY, MRS. I. M.
 GARTH, MR. D. J.
 GILL, MR. W.
 HARFIELD, MRS. C. R. M.
 HARFIELD, MISS J. E.
 HATELEY, MR. B. V.
 HOLE, MR. L. T. A.
 HUTCHINSON, MR. L. R.
 HUTTON-JONES, MR. B.
 ISBEL, MISS J.
 JOHNS, MR. A. A.
 KENT, MR. G.
 KROKER, MRS. C. O.
 LEIVESLEY, MR. A. G.
 LOVETT, MR. K. H.

MASSEY, MR. A.
 MONOGHAN, MR. P. C.
 MCAULEY, MR. A.
 McCLINTOCK, MR. W.
 McINTYRE, MR. V. C.
 NETTLEBECK, MR. G.
 O'BRIEN, DR. M. M.
 O'CONNOR, MR. K. J.
 PEDERICK, MR. E. B.
 PHILLIPS, MR. A. W.
 PIETSCH, MR. E. B.
 POWELL, MRS. J.
 RANDALL, MR. H. J.
 REID, MR. L. E.
 ROBERTSON, MR. P.
 ROBINSON, MR. W. R.

RUSSELL, MRS. E. W.
 RUSSELL, MR. M. S.
 SCHULZ, MR. F. P.
 SCHURMANN, MISS N. J.
 SHEPHERD, MR. R. W.
 SIMPSON, MR. M. S.
 SMITH, MR. J. E.
 SMITH, MRS. M.
 STENHOUSE, MISS L.
 TIPPETT, MRS. E. M.
 WATT, MR. D. McL.
 WEBSTER, MR. R. W.
 WIK, MRS. W. M.
 WILIAMSON, MR. S. V.

CENTENARY GOVERNORS

BETHELL, MR. R.
 BROWNSTEIN, MR. E. G.
 CHISHOLM, MR. G.
 COUTTS, MR. P. A.
 CRELLIN, MRS. E.
 CUDDIHY, MR. M. W.

EDWARDS, MR. R. G.
 ELDRIDGE, MR. E.
 FINCH, MR. A.
 GRANT, MR. R. G.
 HEARD, MR. G.
 HILL, MRS. D.

JENKINSON, MR. C.
 JOHN, MR. M. D.
 LIND, MR. G. B.
 MATUSCHKA, MR. E.
 MOORE, MR. L. G.
 MUHLNICKEL, MR. V. F.

O'BRIEN, DR. M. M.
 PATTERSON, MR. R.
 RODDA, MRS. H.
 SMITH, MISS M. A. R.
 TAYLOR, MR. M. H.
 VAN DYK, MR. J. A.

CAPITAL DONATIONS

A

Allen, Mr. F. A., \$12; Anonymous, \$1,007;
 Aumann, Miss, \$100.

B

Ballinger, Mr. E., \$10; Berry, Mr. J., \$100;
 Binnie, Mr. A. W., \$15.

C

Carrathers, Mr. H., \$40; Carter, Mr. L. M.,
 \$100; Charman, Mr. B., \$30; Clark, Mr.
 N. J., \$15; Colyer, Mrs. E., \$189; Coustley,
 Miss R., \$186; Cuddihy, Mr. M., \$2.

D

Dalton, Mr. B., \$50; Delahunty, Mr. J.,
 \$5.

F

Ferguson, Mrs., \$2; Flack, Mr. F., \$20;
 Flack, Mr. J., \$100; Francis, Mr. E., \$20;
 Freeman, Mrs. A. S., \$200.

G

Garvin, Mrs. S., \$20; Goroke Young Far-
 mers, \$20; Greenall, Mr. D., \$20.

H

Hamilton, Mr. J., \$5; Hampson, Mr. and
 Mrs. R., \$2; Hartman, Mrs. E., \$40; Hen-
 derson, Miss G., \$5; Hennessey, Mrs. C. A.,
 \$350; Hinch, Mr. A., \$11.80; Holy Trinity
 Lutheran Church, \$66.84.

K

Kemp, Mrs. Z., \$5.

L

Lehmann, Mr. A. M., \$20; Lord Mayor's
 Fund, \$15; Loveridge, Mrs. V., \$50; Lovett,
 Mr. K. H., \$3.50.

Mc

McCombe, Mr. E., \$124; McGennissen, Mr.
 J., \$10.

M

Mellington, Mr. J., \$10; Miatke, Mr. E. A.,
 \$10; Miller, Mr. J., \$5; Miller, Mr. L. D.,
 \$60; Minyip Lions Club, \$15.81; Mitchell,
 Mr. A., \$10; Mott, Mr. T. M., \$112; Muller,
 Mr. A. C., \$50.

O

Olden, Mr. E. G., \$134.50.

P

Pannan, Mrs. E. A., \$200; Pethard Tarax
 Charitable Trust, \$150.

R

Rae&, Mr. G., \$70; Rideout, Mrs. A. J.,
 \$5; Ryan, Mrs. N., \$100.

S

Schubert, Mrs. A. C., \$100; Scott, Mrs. E.
 R., \$10; Sun-News Pictorial, \$100.

T

Thomas, W. C. & Sons Pty. Ltd., \$20;
 Tucker, Mrs. N., \$100; Turnbull, Mr. C. J.,
 \$5.

W

Wallis, Miss M. T., \$240; Walter, Mr. J.
 E., \$2; Wilkinson, Mr. L. W., \$20; The
 Truby and Florence Williams Charitable
 Trust, \$450; Wimmera Base Hospital Lad-
 ies' Auxiliary, \$3,651.90; Wimmera Soaring
 Club, \$8.

Cover photograph is the architect's drawing of future Day Hospital, as supplied by R. S. Demaine, Russell, Trundle, Armstrong and Orton Pty. Ltd., Architects.
Other photographs by Wimmera Mail-Times.

Printed Litho by Wimmera Mail-Times Pty. Ltd., Horsham.