

**WIMMERA
BASE
HOSPITAL
109th Annual
Report 1983**

WIMMERA BASE HOSPITAL



109th ANNUAL REPORT 1982/83

CONTENTS

Our Hospital's Objectives	2	Highlights of the Year — In Camera	16
The Year's Highlights — at a glance	3	Administrative Services Division	18
Office Bearers and members of the Board of Management	4	The Community in the Hospital	21
Annual Report 1982/83	6	Statistics for 1982/83	22
Medical Division	9	Finance	24
Nursing Service Report	12	Donations	30
		Life and Centenary Governors	31
		The Hospital in the Community	32

THE WIMMERA BASE HOSPITAL was established in 1874 as the Horsham Hospital and was incorporated by authority of the Hospitals and Charities Act (No. 5300) on 27th August, 1877. The name of the hospital was changed in 1950 to the Wimmera Base Hospital with the approval of the Hospitals and Charities Commission of Victoria.



The Wimmera Base Hospital believes strongly in the adage 'prevention is better than cure' and to this end embarked on a major health promotion project during the year.

Some 200 staff underwent various screening tests on a voluntary basis to determine their personal level of health and fitness, and received professional advice as to the methods by which they could improve their health.

The Hospital is about to conduct a series of programmes on stress management, weight reduction and exercise to assist staff in their efforts to improve their level of health and fitness.

The photograph shows Sr. Julie Brooksby and Physiotherapist Liz Tivey monitoring Barbara Guthrie's fitness rate while undertaking a bicycle test.

OUR HOSPITAL'S OBJECTIVES

The registered objects of the Wimmera Base Hospital are:

- (a) To afford relief, including maintenance and the treatment or cure of, or attention to, any disease or ailment, or any injury consequent on any accident, medical and/or surgical attendance, medicine, nursing assistance, support or aid of any kind or in any form to such persons as are entitled thereto under the Hospitals and Charities Act.
- (b) To provide facilities for the treatment of private and hospital patients or either of them.
- (c) To provide facilities for the carrying out of investigations into ailments, diseases, injuries or other matters affecting the human body.
- (d) To provide facilities for the training of medical, para-medical, nurses and other hospital personnel as approved.

PRINCIPAL EXECUTIVE OFFICERS

Manager

Mr. S. B. Capp, B. Comm. (Melb.),
M. Admin. (Mon.), A.H.A., A.A.S.A. (Snr.)

Director of Nursing

Mrs. G. M. Curran, Dip. Theatre Man.,
F.C.N.A.

Medical Administrator

Dr. M. A. Griffith, M.B., B.S.,
D.A. (Melb.), F.F.A.R.A.C.S.

Assistant Manager

Mr. M. D. Williams, B. Bus., M.H.P.,
A.A.S.A., A.H.A. (Prov.)

THE YEAR'S HIGHLIGHTS — at a glance

DEVELOPMENT OF SERVICES TO PATIENTS, STAFF AND THE COMMUNITY

- * Initiation of Healthy Lifestyle Project.
- * Arrival of renal dialysis equipment on loan from the Royal Melbourne Hospital.
- * Intensive fluency courses for stutterers.
- * Provision of chemotherapy as a standard pharmaceutical service.
- * Educational programmes for expectant mothers and for primary school children on back care.
- * Move of many of the Occupational Therapy Workshop group to the Wimmera Wool Factory.

DEVELOPMENT OF BUILDINGS AND EQUIPMENT

- * Official opening of the Intensive Care Unit.
- * Creation of a recovery room for post-operative patients.
- * Relocation of the Central Sterile Supply Department.
- * Extension of the workshop area.
- * Creation of a sterile stock room.
- * Additional diagnostic and treatment equipment.
- * Increase in computing capacity.
- * New washing machine in the laundry.

FURTHER HIGHLIGHTS

- * Increases in departmental activity levels during a year of continuing financial restriction.
- * Student nurse graduation.
- * Fire training exercise for staff.
- * Identification badges issued to all staff.
- * New-look monthly staff news sheet — the Base Bulletin.

OFFICE BEARERS AND MEMBERS OF THE BOARD OF MANAGEMENT

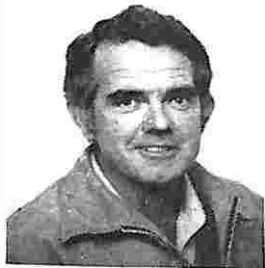


Mr. Reece Burgess — President

Ph.C. M.P.S.

Mr. Burgess was appointed to the board of management in October 1971 and has held the office of president since October 1982. He operates a retail pharmaceutical business in Horsham and with other members of the board of management is committed to improving the quality of care provided by the hospital. Mr Burgess brings paramedical qualifications as well as general management and personnel management skills to the board. He currently serves on the following board sub-committees:

Executive Committee
Planning Committee
Hospital Services Review Committee
Special Purpose Medical Fund Committee
Medical Consultative Committee
Medical Advisory Board
Audit Committee



Mr. David McFarlane

Joined the board in June 1967 and during that time has held the office of President for a four year period. Mr McFarlane is a company director of the plumbing business which he developed in Horsham and brings building and planning skills to the board. His broad experience in hospital affairs over a sixteen year period strengthen the board's working knowledge of hospital procedures and development. Mr. McFarlane also contributes on these sub-committees:

Building and Engineering Services Advisory Committee
Hospital Services Review Committee



Mr. Max Cuddihy — Senior Vice-President

M.A. (Leeds) L.A.C.S.T. I.P.T.C. M.A.A.S.H.

Appointed to the board of management in May 1973, Mr. Cuddihy was elevated to the position of senior vice-president in October 1982. His experience in the field of education combined with paramedical qualifications and interests in speech therapy enhance Mr. Cuddihy's contribution to the board's activities. He is currently serving the hospital as a board representative on the following sub-committees:

Hospital Services Review Committee
Medical Consultative Committee
Accreditation Advisory Committee

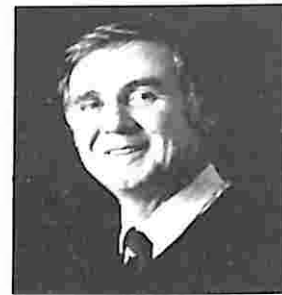


Dr. Rodney Abud

M.B., B.S., F.R.A.C.P.

Dr. Abud was appointed to the board in December 1970 and is the immediate past-President of the hospital having been appointed to that office in 1977. He is a specialist physician who possesses an in-depth knowledge of the hospital from both an administrative and medical perspective. Dr. Abud is acutely aware of the health needs of the community served by the hospital and also contributes through the following:

Executive Committee
Planning Committee
Nurse Education Advisory Committee
Medical Advisory Board
Medical and Surgical Equipment Advisory Committee



Mr. Graeme Lind — Junior Vice-President

Joined the board in September 1975 and since that time has been actively involved in hospital matters, more recently in the position of junior vice-president. Mr. Lind provides the board with the benefit of extensive managerial business experience in the local community and serves the processes of management on the following board sub-committees:

Executive Committee
Planning Committee
Building and Engineering Services Advisory Committee
Personnel and Establishment Advisory Committee
Public Relations Advisory Committee
Audit Committee.



Mrs. Heather Mitchell

J.P., M.B.E.

Mrs. Mitchell joined the board in June 1976 and is only the second woman to have been appointed to the board in 109 years. As a trained nurse, her ability to advise the hospital on that aspect of patient care is invaluable. As a leading member of the Wimmera community with extensive involvement in other community interests, Mrs. Mitchell is a dedicated contributor who also serves the board through its:

Executive Committee
Hospitals Services Review Committee
Nurse Education Advisory Committee
Medical Advisory Board
Public Relations Advisory Committee



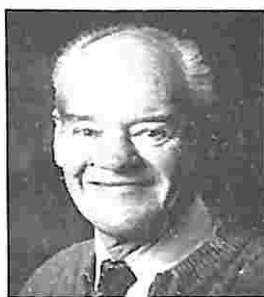
Mr. Keith Lovett — Treasurer

F.A.S.A., F.I.M.A., L.M.A., J.P.

Mr. Lovett was appointed to the board of management in December 1949 and has been the hospital's treasurer for a number of years. Recently retired from the position of Wimmera Shire Secretary, Mr.

Lovett's long experience in local government administration as a qualified accountant, provides the board with extensive financial and management expertise. As the board's longest serving current member, Mr. Lovett also serves on the following sub-committees:

- Executive Committee
- Central Linen Service Advisory Committee
- Special Purposes Medical Fund Committee
- Medical Advisory Board
- Audit Committee



Mr. R. Shepherd

J.P.

Mr. Shepherd joined the board in August 1950 and is currently a director of the business which he developed in Horsham. Over his long period of service to the hospital, Mr. Shepherd has developed a very detailed knowledge of hospital matters which has been enhanced by his representation of hospitals on The Victorian Hospitals Association and Country Hospitals Association. A past President of the hospital, Mr. Shepherd's guidance is also valued on the following sub-committees:

- Planning Committee
- Special Purposes Medical Fund Committee
- Medical Consultative Committee
- Personnel and Establishment Committee



Dr. Mark O'Brien

M.B., B.S., F.R.A.C.G.P.

Appointed to the board in April 1954 Dr. O'Brien is a past President of the hospital and holds Life and Centenary Governorships. As a medical practitioner his wealth of experience in the provision of health care in the Wimmera provides the board with important advice on patient care and medical matters. Dr. O'Brien serves on the board's:

- Medical and Surgical Equipment Advisory Committee
- Operating Theatre Advisory Committee.



Mr. Geoffrey Heard

Appointed in September 1976, Mr. Heard is the only farmer and grazier on the board despite the local community's strong rural basis. As a past Shire President of the Shire of Arapiles, Mr. Heard expands the input to the board from community leaders and ensures that the needs of the communities surrounding the City of Horsham are represented during the board's planning function.



Mr. Lachlan Campbell

B.C.E., Dip. CE, M.I.E., Aust., E.W.S.

Appointed to the board in October 1981 Mr. Campbell is the City Engineer for the City of Horsham. He is a qualified civil engineer and building surveyor whose expanding contribution to hospital matters is facilitated through membership of the board's:

- Executive Committee
- Building and Engineering Services Advisory Committee
- Central Linen Service Advisory Committee
- Medical and Surgical Equipment Advisory Committee



Rev. Allan Thompson

B.A., B.D.

Reverend Thompson is the most recent appointment to the board of management having joined in February 1983. As a Minister of Religion and office bearer of the Ministers Fraternal, he has brought to the board a deep pastoral concern for patient welfare. Rev. Thompson's wide community involvement increases the community's input to hospital matters. He also serves on the following sub-committees:

- Hospital Services Review Committee
- Nurse Education Advisory Committee



Mr. Reece Burgess
President
Committee of Management

ANNUAL REPORT 1982/83

On behalf of the board of management, we have much pleasure in presenting to you this summary of hospital activities for the year ended June 30, 1983. Our hospital functions to serve all in the community and to afford the highest possible standard of health care delivery to all those in need.

We believe that over the past year this objective has been fulfilled and the standards of care provided reflect the skills and professional expertise of a highly qualified and motivated staff desirous of improving the health of our community.

BOARD MEMBERSHIP

Since 1980, appointments to the board of management have been made by the Governor-in-Council on the recommendation of the Minister of Health. In order to assist the minister in making these recommendations, a new system of appointment was instituted in 1982. This required the hospital to advertise vacancies and seek applications from interested persons.

Four board members were appointed until August 1985 under this process. These are Mr. Geoffrey Heard, Mr. Keith Lovett, Dr. Mark O'Brien and Rev. Allan Thompson. The board has been pleased to welcome Mr. Thompson to its number. The other three appointees were previously members of the board and their return to office is also welcomed.

This round of appointments necessitated the retirement from the board of Mr. Bruce Stewart. Mr. Stewart had been a member of the board since 1971 and his significant contribution to the board is appreciated. Mr. Stewart's connection with the hospital remains strong through his position with our solicitors, Power and Bennett.

HOSPITAL DEVELOPMENT

The major event for the year was the official opening of the William Buckland Intensive Care Unit on July 16, 1982. This five-bed unit was constructed at a total cost in excess of \$370,000.

The Minister of Health, Mr. Tom Roper, performed the opening ceremony and in doing so commented on the need for such facilities to be developed in centres like Horsham. The utilisation of the unit since its opening confirms the board's decision to proceed with its construction.

It is unfortunate that the development of other ward facilities throughout the hospital have not yet received the approval of government to proceed. Last year's annual report advised of the board's participation in a joint working party of Health Commission and hospital personnel. The aim of this working party was to clearly define the role of Wimmera Base Hospital and to determine the type and level of services provided.

By December a most comprehensive document was prepared by hospital staff and it now remains for the Health Commission to consider and advise on the document. It is acknowledged that an assessment of the state's capital works programme is needed and it is pleasing to see that such an investigation is being conducted for the Minister of Health. It is hoped that the work already done by us will clearly identify the needs of this hospital and its requirements for future capital development.

Some works have been possible through the Health Commission's minor works programme, and during the year two projects were completed.

The first was the establishment of a recovery room in the operating theatres and the re-establishment of the Central Sterilising and Supply Department at a total cost of \$50,000. This project was designed and constructed by hospital staff and necessitated a major disruption to the normal workings of these areas. The board wishes to record its appreciation to all staff involved for their approach to the task. Particular thanks are due to the Engineering Department for their excellent workmanship and to the medical and nursing staff for their co-operation.

The second significant project was the extension to the engineering workshops. This construction cost \$47,000 and now gives this department a facility of an extremely high standard.



Building extensions to the Engineering Department

TO THE COMMUNITY



Mr Stan Capp
Manager

FINANCE

This financial year the accounting systems reverted to a complete accrual system and for the first time depreciation has been charged as a cost of operating the hospital. This change coincides with a major improvement in personnel budgeting systems and has greatly assisted in more appropriate financial information being made available to the board.

The Hospital's turnover on annual recurrent expenditure is now approaching \$11.5 million and it is pleasing to record that, despite many cost increases, we have managed to remain within our approved budget allocation.

The future funding of hospitals is expected to become increasingly more stringent with the prospect of arbitrary reductions in budgets being suggested for all areas of government expenditure. It is a matter of concern to the board that the persons to suffer most from any reductions in service will be patients and our staff.

It is hoped that economic considerations will not override our fundamental considerations which must be for the provision of high quality patient care.

HEALTHY LIFESTYLE PROGRAMME

The board was delighted to support the establishment of a Healthy Lifestyle Committee comprising staff from several disciplines and two members of the visiting medical staff. The committee has organised a number of activities throughout the year with its major effort being the screening of 200 staff, board members and medical practitioners, in an effort to identify their key health risk factors.

The screening process was particularly assisted by the input of Dr. Alan Wolff. Dr. Wolff was on secondment from the Royal Melbourne Hospital as part of his Fellowship in Medical Administration and worked with us for six months. A great deal of the programme's success is due to his enthusiasm and commitment to the principles behind the programme.

Expertise on health promotion activities and the conduct of training programmes has been called upon and classes are now being developed to enable staff to address particular areas of interest, be it in exercise, weight reduction or stress management.

The board is happy to report the progress of this initiative and to highlight it as a most significant feature of the year's activities.

NURSE EDUCATION

For some time the board has been considering the future directions of nurse education and the effect of external influences on the future role of our own School of Nursing. The board recognises that there is a

need for higher level education to meet the increasing demands which will be placed on the nursing profession in the years ahead.

The board is currently investigating the feasibility of developing a comprehensive nurse training programme at a tertiary institution, preferably at a degree level. Current thinking is that our school would form part of a university open campus. Under this proposal we would have access to a tertiary level course and yet retain the significant advantages of students remaining in Horsham to undertake training.

It is essential that our School of Nursing remains the centre of nurse education for our region, and the board will resist most strongly any move to a more centralised approach. The standards of academic and practical excellence achieved are adequate testimony to this view.



View of the main block of the hospital.

STAFF

The board was pleased to make two new appointments to the medical staff this year and to recognise the long service of Dr. Royston Taylor.

Dr. Michael Giles was appointed Visiting Ophthalmologist, Mr. Andrew McQueen was appointed Consulting Orthopaedic Surgeon and Dr. Taylor was appointed a consulting medical officer. The board also wishes to express its thanks to Mr. James Morley who has retired from his position of Consulting Orthopaedic Surgeon.

Other senior appointments made during the year were Mrs. Jillianne Waixel, Deputy Director of Nursing; Mrs. Margery Pannan, Principal Nurse Teacher; and Mr. John Walker, Relieving Hospital Manager.

APPRECIATION

The hospital is supported in many ways from several sections of the community. This year has once again witnessed substantial support from various groups and the board would like to express its sincere appreciation to all who have worked and contributed so generously to the hospital.

Outstanding donations were received from the Wimmera Base Hospital Ladies' Auxiliary and members' untiring efforts are sincerely appreciated.

Another significant donation was received from the Uncle Bob's Club which generously donated \$4,839 to enable the purchase of paediatric equipment. The work of this group towards the needs of children is acknowledged with gratitude.

The audit of our finances has been the responsibility of Green, Taylor and Greenall, chartered accountants. The board appreciates the assistance and professional approach of our auditors. In particular we wish to acknowledge the contribution of Mr. David Greenall who has been the principal most involved with the hospital. Mr. Greenall resigned from his firm during the year. His contribution to our financial management has been appreciated.

Once again our architects, R. S. Demaine, Russell, Trundle, Armstrong and Orton Pty. Ltd. have worked closely with us on our building works and we acknowledge their co-operation and expertise.

To our bankers, the National Commercial Banking Corporation of Australia Ltd. and our solicitors, Power and Bennett, we express our sincere appreciation for their assistance throughout the year.

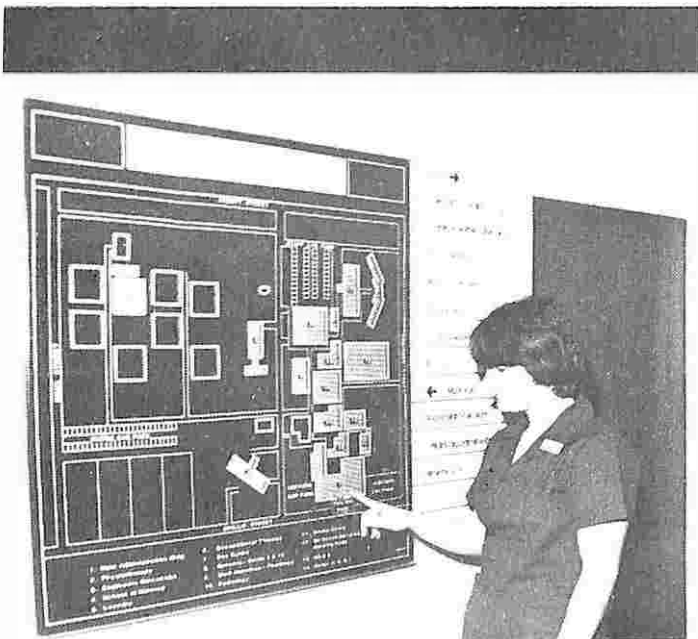
The board would also like to express special thanks to the following organisations:

Health Commission of Victoria
Department of Social Security
The Victorian Hospitals Association Limited
Australian Hospitals Association
Horsham City Council
Wimmera Mail-Times
Radio stations 3WV and 3WM
Television station BTV6

In conclusion we wish to thank all staff throughout the hospital who each assist in the ongoing operation of the hospital and in the delivery of high quality health service to the people of the Wimmera.

Reece Burgess
PRESIDENT

Stan Capp
MANAGER



Mrs. Cicely Sutton studying the new directory in the hospital foyer





Dr. Max Griffith
Medical Administrator

MEDICAL DIVISION

During 1982/83 all medical departments combined their resources to begin a unique project — a screen of over 30 per cent of the hospital's staff for lifestyle risk factors.

Hospital staff were invited to take part in a personal assessment of their lifestyle. Factors which were checked included:

1. Diet
2. Fitness level
3. Smoking
4. Blood pressure
5. Stress
6. Weight

If positive risk factors were found, staff were given the opportunity to talk to an appropriate person (eg. doctor, dietitian, physiotherapist) or join a hospital conducted class in:

1. Exercise
2. Weight control
3. Relaxation and stress management.

The enthusiasm for the programme was very encouraging for the Healthy Lifestyle Committee. It is hoped that the programme will be expanded in the future.

Highlights during the year for individual departments included:

***Speech Pathology** is now conducting intensive fluency courses for people who stutter, and lip-reading courses for those with hearing impairments.

The department also assists audiologists from Melbourne screening for hearing problems at the Wimmera Machinery Field Days.

A toy library is being established in Horsham to provide toys and information for parents and children regarding speech development.

*The **Medical Record Department** was relocated in May to Baillie Street.

The Department regularly visits smaller hospitals in the region in an advisory capacity.

Changes in the system for completion of the medical records by Resident medical officers has resulted in a dramatic drop in the number of diagnoses outstanding reported to the Health Commission.

*The opening of the Wimmera Wool Factory and the subsequent employment of most of the O.T. Workshop group was a major highlight for **Occupational Therapy** during the year. A dramatic change in confidence, social skills and work performance in the group was seen.

A music group now meets in the Sir Robert Menzies Nursing Home on a weekly basis.

The handyman services has continued its valuable operation, with its most notable feature being the continually increasing demand for the service as more people are able to be maintained at home rather than entering permanent hospital care.

*Additions to the **Library** in the past year include Index Medicus, Nursing and Allied Health Index, Scientific Serials in Australian Libraries and a microfiche reader. All are useful tools in tracing written materials and their location.

The Library now has 1300 books, and subscribes to over 60 journals.

*In the **Physiotherapy Department**, Elizabeth Tivey has begun classes for women in the early stages of their pregnancy. In addition night classes in ante-natal education have been started and are well received by expectant couples.

Peter Bond is compiling an education programme for primary school children about back care. The aim is to educate children who may then in turn educate their families at home.



Medical Records staff in front of their new department

*The number of Ultrasound examinations carried out by the **Radiology Department** has increased 30 per cent in the past year. The capability of Ultrasound to display cross-sectional images of the body has helped greatly in patient diagnosis. The method does have limitations and complex problems may require more sophisticated equipment available at other centres. The number of X-rays performed in the year remained constant at six and a half thousand.

*During the year **Pharmacy** extended several of its services. Chemotherapy is now a standard service. As treatments can be rather complicated guidelines have been produced.

With an ever-increasing amount of paperwork, procedures in several areas have been improved with the use of a mini-computer. With the aid of programmes devised by Dr. Graham Humphries the computer is used to prepare regional hospital accounts, stocktaking figures and stocklists.

Microfiche information has been provided in the areas of treatment of overdoses and poisonings and intravenous additive information.



Medical technologist, Mr Ken Sutherland, undertaking a video microscopic examination in the Pathology Department.

The **Pathology Department**, in addition to continuing its regular pathology service, has increased its capacity and skills in the world of computers. Dr. Humphries has spent many hours writing programmes for use in other hospital areas. His efforts are much appreciated.

From the Special Purpose Medical Trust Fund was purchased a video recording system which allows the video taping of macroscopic and microscopic pathology specimens. The recorded playback has improved audience appreciation of pathology specimens. A number of visiting lecturers contributed to the Thursday lunchtime clinical meetings. The lectures have been given under the auspices of the Victorian Medical Postgraduate Foundation. It is pleasing to note that the average attendance at clinical meetings has been 68 per cent.

Mr. James Morley, who for many years provided a consultant orthopaedic service, has retired. His friendly nature and conservative advice have been greatly appreciated in the Wimmera region.

Professor Dick Lovell has entertained and educated so many of us who had the privilege of attending the professorial meetings. His final meeting was conducted with all the enthusiasm of a young physician. His teaching will be remembered and our wishes go with him in his retirement.

To all medical staff, consultant, visiting, resident and full-time, my sincere thanks for the maintenance of the high standard of medical practice which exists at the Wimmera Base Hospital.

The major part of this report was completed by Dr. Alan Wolff. He is Fellow in Medical Administration at the Royal Melbourne and had been seconded to Wimmera Base to study medical administration in a base hospital.

It has been my personal pleasure to have such a willing colleague to share the work for six months. In particular I wish to convey the gratitude of many people for his contribution to the healthy lifestyle programme.

Dr. Max Griffith,
MEDICAL ADMINISTRATOR

MEDICAL STAFF

at June 30, 1983

Medical Administrator:

M.A. Griffith, M.B., B.S., D.A. (Melb.) F.F.A.R.A.C.S.

Director of Pathology:

G. Humphries, M.A., B.M., Ch.B., D.T.M. and H.,
D.R.C.Path., M.R.C.Path.

Director of Radiology:

L. Wong Shee, M.B., Ch.B, M.R.C.R.A.

Director of Anaesthesia:

R. C. Bennett, M.B., B.S., D.A. (Lond.), M.F.A.R.C.S.

PARA MEDICAL STAFF

at June 30, 1983

Chief Pharmacist:

Mr. I. Gerlach, Ph.C., M.P.S., F.S.H.P.

Chief Radiographer:

Mr. H. Kortman, M.I.R., A.R.M.I.T.

Chief Physiotherapist:

Miss M. Cassuben, B. App. Sc. (Physio.)

Speech Pathologist:

Miss D. Blackburn, B.App.Sc. (Speech Pathology)

Chief Medical Records Administrator:

Mrs. C. Dooling, Assoc. Dip.(Medical Records
Administration)

Medical Librarian:

Mrs. J. Sheldon, B.A.

Chief Occupational Therapist:

Mrs. J. Jarred, B. App. Sc. (O.T.), M.V.A.O.T.

Dietitian:

Miss P. Lade, B.Sc. (Monash), Grad. Dip. Diet.

Podiatrist:

Miss C. Tynan, Dip. App. Sc. (Podiatry)

VISITING MEDICAL STAFF

at June 30, 1983

Consulting Staff:

R.A.M. Taylor, M.B., B.S., (Lond.), L.M.S.S.A.

M. M. O'Brien, M.B., B.S., F.R.A.C.G.P.

Consulting Pathologist:

G. B. Leyton, M.A., M.D., D.C.P., F.R.C.Path., F.R.C.P.A.

Consulting Surgeon:

E.G. Brownstein, M.B., Ch.B., F.R.C.S. (Edin), F.R.A.C.S.

Obstetrician and Gynaecologist:

E.T. Miller, M.B., B.S., F.R.C.O.G.

Ophthalmologist:

D. Kaufmann, M.B., B.S., F.R.A.C.S.

M. Giles, M.B., B.S., F.R.A.C.S.

Oral Surgeon:

P. Bowker, M.D.Sc., F.D.S.R.C.S. (Eng)

Orthopaedic Surgeon:

A. McQueen, F.R.A.C.S.

Paeditrician:

M. Brown, M.B., B.S., F.R.A.C.P.

Physician:

R. E. Abud, M.B., B.S., F.R.A.C.P.

Psychiatrist:

I. V. Jackson M.B., B.S., D.P.M., M.R.C. Psych.

Otolaryngologist:

R.L. Thomas, M.B., B.S., F.R.A.C.S., F.R.C.S.

Surgeon:

G. S. R. Kitchen, M.B., B.S., F.R.A.C.S.

Vascular Surgeon:

I. A. Ferguson, M.B., B.S., F.R.A.C.S., F.R.C.S.

Medical Officers:

C. H. Foord, M.B., B.S., Dip. Obst., R.C.O.G.

P. P. Haslau, M.B., B.S., F.R.A.C.G.P.

A. Horwood, M.B., B.S.

J. Jenkinson, M.B., B.S.

D. Leembruggen, M.B., B.S.

R. M. Lloyd, M.B., B.S., Dip. Obst.

A. McBain, M.B., B.S.

G. A. O'Brien, M.B., B.S., Dip. Obst., R.C.O.G.

Dental Surgeons:

B. Bourke, B.D. Sc., L.D.S.

D. Lye, B.D. Sc., L.D.S.

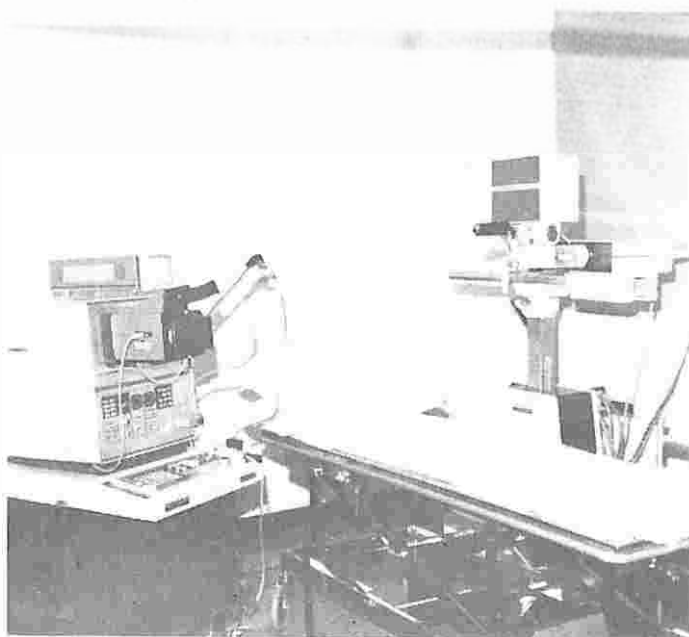
J. McCombe, B.D. Sc., L.D.S.

G. Mason, B.D. Sc., L.D.S.

M. Monk, B.D.S. (Land.)

C.W. Pearson, B.D. Sc., L.D.S.

E. Wollff, M.D. Sc., L.D.S., F.R.A.C.D.S.



Ultrasound unit in the Radiology Department.





Mrs Gillian Curran
Director of Nursing

NURSING SERVICE REPORT

The Nursing Service has experienced the difficulties engendered by severe financial constraints coupled with the need to implement the new practices required to keep pace with progress in nursing and medicine. Although it is pleasing to note the reduction in average length of stay for patients admitted to hospital, there has not been a reduction in daily average bed occupancy. This increased workload, together with the further development of specialist surgical services undertaken by visiting consultants, has been achieved without any increase in staff numbers. The high standard of nursing care, to which our community has become accustomed, has been maintained only by the continued commitment and dedication of the staff. I wish to convey my sincere gratitude to them all for their continued loyalty and contribution to the Nursing Service of Wimmera Base Hospital.

Our students of nursing continue to perform well and many have obtained credits and distinctions in the State Registration Examination. A great deal of time has been spent in seeking a means to ensure the retention of our nurse training school, however the public should be aware that this is by no means assured. I ask you all to use whatever means or influence you have, to assist in this matter. The Wimmera can not afford to lose this important facility, a true part of its heritage.

The annual nurses' graduation ceremony was held on 25th March, 1983. The following graduates were presented with their certificates by Mr. Gordon Edwards who was guest speaker:

Anne Louise Bowden	Janine Kay Borgelt
Roslyn Kaye Frew	Ann Maree Fitchett
Helen Marie Williams	Donna Lea Hunter
Wendy Joy Breiherton	Catrina Alexander
Lorraine Alice Brooks	MacAuslan
Leanne Shirley Hadden	Andrea Oswald
Patricia Mary Hamilton	Jillian Raie Sayer
Clare Veronica Maher	Jacqueline Anne Sheward
Lynette Joy Paynter	Lance James Stapledon
Jeanette Mary Walsh	Jennifer Anne Mackley
David John Corbett-	Christine Elizabeth
Cannell	Watson

The T. F. Ryan Prize was awarded to Leanne Hadden, the Wimmera Base Hospital Past Trainees Prize was awarded to Christine Watson, and Clare Maher received the Award for Academic Excellence.

Students who commenced their training during the year:

Group 882

Susan Jane Blair
Christine Anne Dufty
Sally Marlene Finnigan
Cheryl Dawn Heinrich
Stuart Leslie King
Robert Remo Ron Koper
Judith Maria Kreunen
Susan Lyndel Logan
Heather Ann Murray
Meredith Jane Sudholz
Susan Irving Wood

Group 283

Sarah Kathryn Burgess
Tracey Lee Clugston
Anne Katherine Curran
Heather Margaret Haines
Deborah Joy Heath
Kerrie Beverley Hemley
Anne Elizabeth Johnson
Maxwell John McLean
Clare Jane MacGugan
Miriam Elizabeth Mibus
Josephine Notting
Deidree Rees
Jan Elizabeth Ruwoldt
Simone Lynne Ryan

Several senior nursing staff appointments have been made during the year, Mrs. Jillianne Waixel, Deputy Director of Nursing; Mrs. Shirley Wines and Mrs. Louise Walsh, Assistant Director's of Nursing; Mrs. Jo. Yarwood and Miss. Chris Lamenta, Evening Supervisory Sisters; Mrs. Margery Pannan, Principal Nurse Teacher and Mrs. Beverley Taylor, Deputy Principal Nurse Teacher.

New Charge Sisters are Mrs. Beryl Moloney, Day Centre; Mrs. Sue Rowe, Ward 8, Mrs. Ruth Smith, Intensive Care Unit and Mrs. Pam Muszkiera, Central Sterilizing and Supply Department/Infection Control. Miss. Lorna Hoffman and Miss. Norma Krelle retired from the nursing staff at the end of June, Sr. Hoffman after 38 years service to Wimmera Base Hospital and Sr. Krelle after 28 years. These nurses have given long and exemplary service to an institution and a community they loved. On behalf of all nurses I thank them for their contribution to this hospital and to nursing, we are proud to have been their fellows in our profession. The board of management has continued in its efforts to improve facilities under extreme difficulties, it is a continued disappointment that plans for new ward accommodation and theatre facilities are non-existent.

The engineering staff have performed several small miracles throughout the hospital, with finance under the Health Commission of Victoria's minor works programme.

SCHOOL OF NURSING

The School of Nursing has completed another very satisfying year with several new projects included on an already busy calendar.

Highlights include:

- ★ A new classroom, enabling more flexibility in planning classes and lectures.

- ★ The first students on secondment from Pleasant Creek Training Centre undertook general nursing experience in August, 1982 and Group 882 Preliminary Training School commenced.

- ★ During September and October Group 282 successfully completed the phase 1 examination and two nurse teachers from other hospitals undertook practical teaching experience as part of their studies in Diploma of Nursing Education through Armidale College (NSW).

- ★ Students in year 3 of their psychiatric nursing training at Aradale Hospital spent four weeks gaining general nursing experience. These four students were also the first to come on secondment from Aradale and we now have completed the reciprocal secondment arrangements between Wimmera Base Hospital, Aradale and Pleasant Creek.

- ★ Group 280 completed the State Registration Examination in December and plans were well underway for a lecture programme for registered and state enrolled nurses. The Graduate Nurse In-service Education Programme (G.N.I.E.P.) commenced in January and was an immediate success, an average of 65 nurses from all hospitals in the Wimmera attend each week.

- ★ Group 283, with 14 students, commenced their preliminary training school in January.

- ★ The nurses' graduation in March was the highlight for our nurses who completed training.

- ★ Group 882 successfully completed phase 1 in May and a second group of students from Aradale spent there four weeks here.

- ★ Group 880 completed the State Registration Examination in June.

- ★ Work experience in nursing was undertaken by many Wimmera secondary school students.



1983 Student Nurse Graduates

THEATRE

During October 1982 replacement of an air-conditioning unit took place. An emergency theatre and central sterilizing and supply department (C.S.S.D.) was set up on 3rd floor using the old special care unit.

In January 1983, once again an emergency theatre and C.S.S.D. was set up on 3rd floor and alterations to the theatre suite commenced.

Relocation of the sterilizers heralded the set-up of C.S.S.D. as a separate unit. Incorporating the room vacated by two sterilizers and passage way, knocking out some walls, the old linen room area has been opened up to provide a suitable recovery area adjacent to theatre. By removing another wall and closing up a doorway, a changing room and separate tea room for staff was enlarged; a sterile stock storage area was also incorporated with the inclusion of double glazed windows. In the recovery area we now have a spacious area for our patients recovering from anaesthesia and surgery. A special pendant incorporating enough power points for equipment and oxygen, nitrous oxide, air and suction attachments was

constructed by hospital engineering staff. Three patients may recover simultaneously. The area is supervised by a senior registered nurse.

The Uncle Bob's Club donated a Hetomatt heat circulator mattress system to Wimmera Base Hospital this year. The Hetomatt heat circulator is a heating system used to prevent or reduce heat loss from young children — newborn to 4 years — during surgery. The child is placed on the temperature controlled heating mattress. Six pre-adjusted temperatures from 30 degrees to 45 degrees can be selected by turning a switch. With a constant temperature of the circulated water a steady heating of the mattress is obtained.



Sr. Pat Strachan explaining the operation of a hetomatt heat circular mattress with Uncle Bob's Club President, Mr. Tony Pettit.

CENTRAL STERILIZING AND SUPPLY DEPARTMENT

A central sterilizing and supply department has been developed by utilizing the area vacated when the intensive care unit was commissioned. Sterilizers were relocated from the operating theatres to provide facilities for packaging and sterilization. A decontamination area was established where all soiled instruments and equipment are delivered for processing through a new Miele washer, this very prized piece of equipment has the appearance of a dishwasher. The machine has a control panel where the washing programme is selected by the insertion of programmed cards. A pass-through flash sterilizer is used to transfer instruments and equipment from the work room to the sterilizing and packing area, thus reducing traffic to help prevent cross-infection.

A rotary heat sealer has been purchased to enable the use of peel-open packaging and reduce the risk of contamination as sterile articles are withdrawn from the package.

The C.S.S.D. services only the theatres at present, but by the end of 1983 all wards and departments will be provided with a daily imprest system.

INTENSIVE CARE UNIT

Medical staff have been most helpful in conducting lectures and study sessions in I.C.U. for the benefit of staff education.

Education of staff is an extremely important factor in the provision of high quality nursing care by a team that is knowledgeable, efficient and motivated.

We are very aware of the need for experience and knowledge in the field of paediatric and neo-natal intensive care. Dr. Mary Brown is conducting a series of talks covering paediatric emergencies.

Dr. Rex Bennett is presenting a series on anaesthetics for I.C.U. and theatre staff, and will soon talk about respiratory care.

Weekly study sessions have been held on coronary care, and a study day on respiratory intensive care will be held in September.

A student nurse programme has been developed and includes a list of objectives for students while they spend their two weeks in the unit.

The unit aims to maintain its reputation of providing the best possible standards of patient care, to promote education, experience and motivation of the staff.

STAFF EDUCATION

Registered nurses continue to upgrade their qualifications by undertaking studies through colleges of advanced education. This study is done mostly by correspondence in the staff members' own time. Staff involved and institutions include:

Mrs. M. Pannan and Mrs. B. Taylor —
Graduate Diploma in Educational Administration,
Hawthorn Institute of Advanced Education.

Mrs. L. Mentha and Mrs. P. Keyte —
Diploma of Teaching (Nursing), Armidale (NSW)
College of Advanced Education.

Mrs. J. Waixel, Mrs. L. Walsh, Mrs. J. Scarlett and Mrs. J. Pymer —
Diploma of Health Administration, Mitchell College
of Adult Education, Bathurst (NSW).

Mrs. G. Curran —
Certificate of Hospital Administration, Royal Melbourne
Institute of Technology.

Mrs. Ruth Smith successfully completed a full-time course in intensive care nursing at Prince Henry's Hospital in Melbourne.

The hospital continues to sponsor nurses to undertake the one-month course in coronary care at the Royal Melbourne Hospital. Ruth Smith and Therese Florence both attended the course this year.

The first Lyndal Skea Scholarship was awarded to Mrs. J. Scarlett who attended the oncology unit at the Royal Melbourne Hospital to gain experience in the nurses' role in treatment of patients by administration of cytotoxic drugs.

The hospital has again received support from the ladies' auxiliary, many service clubs, and people interested in the welfare of our patients. The Uncle Bob's Club became involved with our hospital for the first time this year, we are most grateful for their generous gifts of equipment to assist in the care of babies and children. Our sincere thanks to all who have given so generously to their hospital.

To the staff of all departments, all visiting staff and the board of management, the nursing staff thank you for assisting us in our endeavours to meet our objective—the provision of high quality patient care.

We look forward to meeting the challenges of another year.

Gillian Curran
DIRECTOR OF NURSING

NURSING STAFF

at June 30, 1983.

Director of Nursing:

Mrs. G.M. Curran, Dip. Theatre Man., F.C.N.A.

Deputy Director of Nursing:

Mrs. J.I. Waixel

Assistant Director of Nursing:

Mrs. S. Wines

Mrs. L.A. Walsh

Mrs. K. Taylor, (Study Leave), Assoc. Dip. N. Studies,
Admin. (Armidale)

NURSE TRAINING SCHOOL

at June 30, 1983.

Principal Nurse Teacher:

Mrs. M. I. Pannan, Assoc. Dip. N. Ed. (Armidale)

Deputy Principal Nurse Teacher:

Mrs. B.J. Taylor, Assoc. Dip. N. Ed. (Cumberland)



Sr. Pauline Keyte, instructing a group of student nurses.



HIGHLIGHTS OF THE YEAR — IN CAMERA



The Wimmera Base Hospital float in the City of Horsham centenary procession.



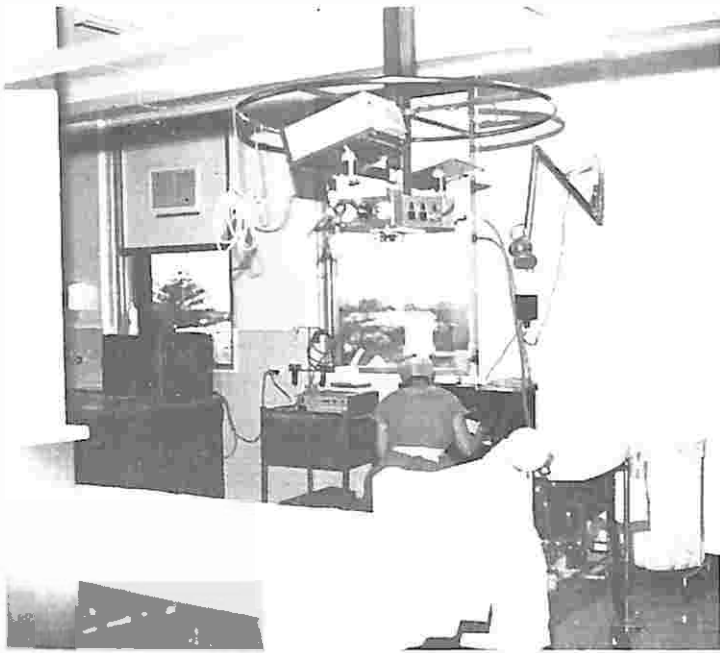
From left: Srs. Louise Walsh, Gillian Curran, Jillianne Waixel and Shirley Wines in period uniform.



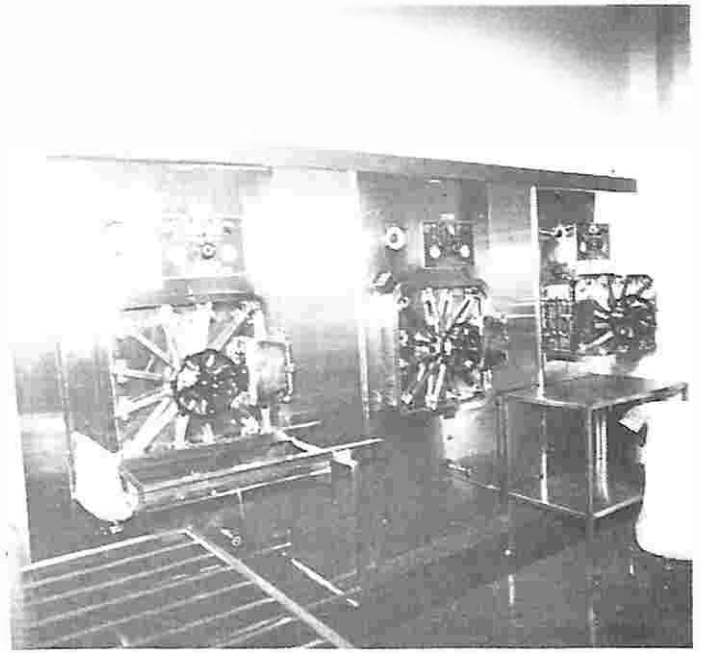
Nurses graduation Ryan Prize winner Miss Leanne Had den pictured with her twin sister, Mrs. Deb Hogari.



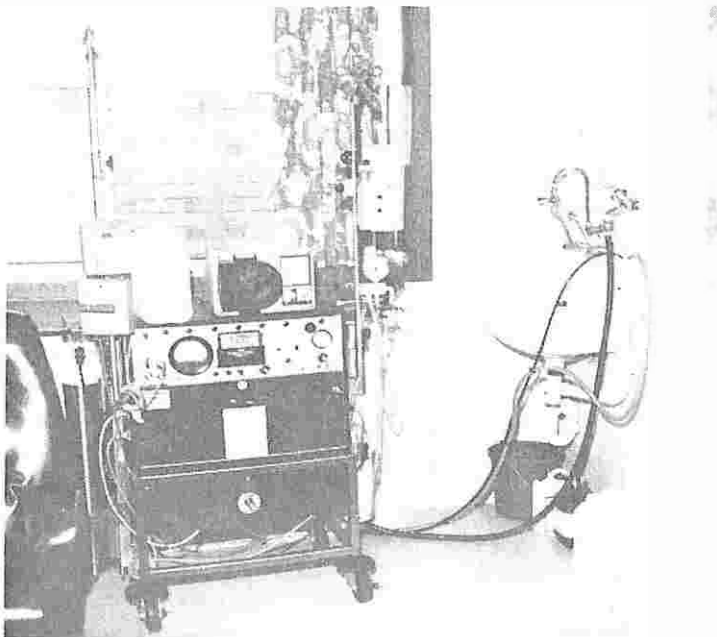
Safety Officer Mr. Ross Haby instructing Mrs. Fernanda Smith in the practical use of fire extinguishers.



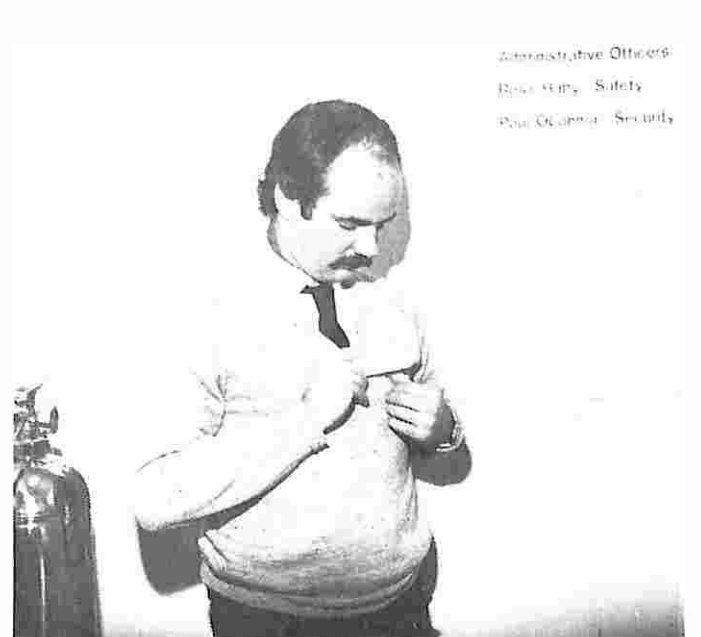
Theatre recovery room completed under the minor works programme.



The new Central Sterilizing and Supply Department, completed by hospital engineering staff.

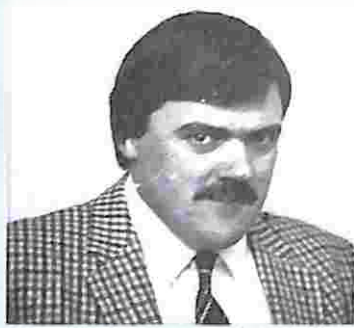


Dialysis equipment on loan from the Royal Melbourne Hospital.



Administrative Officers:
 Ross Kelly - Safety
 Paul O'Connor - Security

Security Officer Mr. Paul O'Connor attaching an identification badge, now compulsory for all hospital staff.



Mr. Murray Williams
Assistant Manager

ADMINISTRATIVE SERVICES DIVISION

ADMINISTRATIVE DIVISION

The Administrative Services Division of the hospital functions to provide support services and administrative back-up to those doctors, nurses and paramedical staff involved in direct patient care. The support services are provided through the Food Services Department, the Engineering Department, and the General Services Department. Laundry services are provided through the Wimmera Hospitals' Group Linen Service. The administrative back-up is provided through the Personnel Department and the Business Administration Department which incorporates the Purchasing Department. In addition to these departments, Administrative Officers and, more recently, a Regional Relieving Manager expand the administrative services provided to this hospital and regional hospitals.

The past year has been characterised by senior administrative staff settling into new positions, or taking on additional duties, and it is hoped that a less mobile management structure will develop from this period of stabilisation.

ed principally through these staff members competing in salon culinaire events held throughout Victoria. These events include:

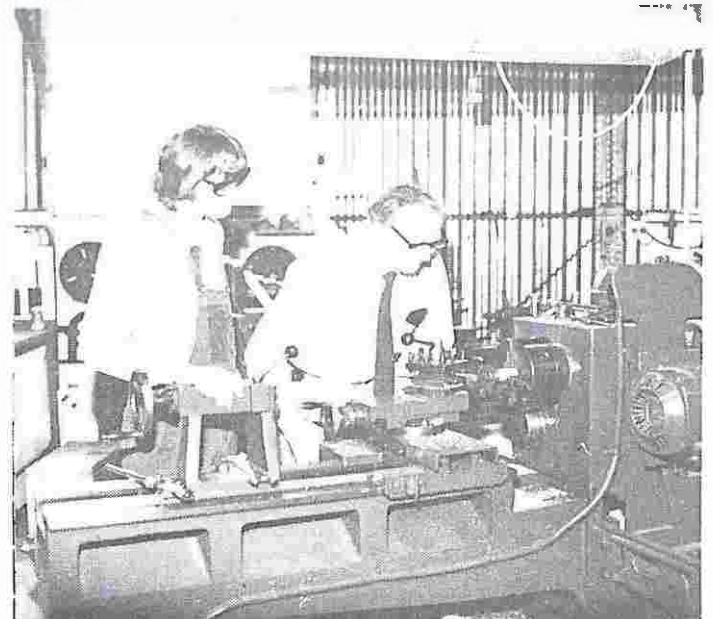
- The Institute of Hospital Catering Salon Culinaire
- The Western Victorian Combined Hospitals Salon Culinaire
- The Australian Work Skills Competition

It was gratifying that chef Ken Reichelt received an encouragement award in the Western Victorian competition and also that apprentice chef Renzo Panozzo was selected, after examination, to compete as one of the top twelve apprentices in the Australian Work Skills Competition. Staff movements in the food services department have been minimal, although Mrs. Marj. Hardingham has taken her well-deserved long service leave prior to retiring in October 1983. Mrs. Hardingham, a Life Governor of the hospital, has completed a magnificent 39 years of service at Wimmera Base.



From left: Mrs. Corrie Hadzig, Miss Gina Scutti and Mrs. Barbara Peskett pictured in the serveries of the cafeteria.

The **Food Services Department** has continued to provide for the catering needs of patients and staff and hospital visitors despite the limited facilities available in the kitchen. Over the past year the department's objective has been to upgrade the skills of the hospital's chefs and apprentice chefs, and this has been achieved



Mr. Tom Martin, Chief Engineer, explaining the use of a centre lathe to Apprentice Dean Baker.

The **Engineering Department** has responsibility for the maintenance and upkeep of the hospital's buildings, plant, equipment and grounds, as well as responsibility for opening the hospital boilers for the production of steam and hot water, the water treatment facility and the emergency power generation

equipment. The department's major project for the year involved remodelling the operating theatre and central sterile supply departments to provide for a theatre recovery area immediately adjacent to the theatres on the second floor of the hospital's main block. We are fortunate to have staff with the skills to carry out work of this nature and achieve such a fine result. The materials cost for this project and the cost of constructing a large extension to the engineering workshop area during the year were met by the Health Commission's minor works programme. Staff movements in the engineering department have also been minimal over the past year, although five successfully completed apprenticeships resulted in our saying farewell and good luck to Rod Bell (carpenter), Rob Binion (electrician), Dennis Dickerson (painter), Craig McKenzie (plumber), and Maurice McClure (fitter).

All of the apprenticeship positions have now been refilled. Of particular note was the appointment to the gardening section of Mrs. Lisa Schneider, a qualified gardener.

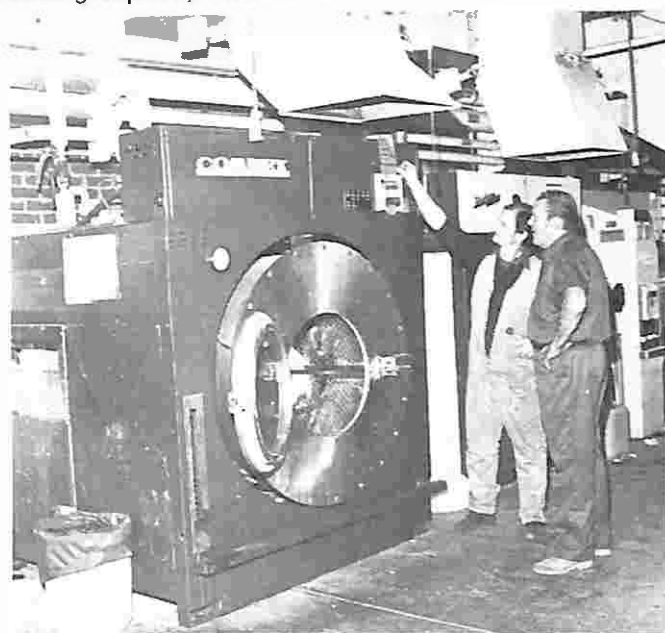


Mr. Bernie Waixel General Services Manager, instructing members of the cleaning staff.

The hospital continues to take great pride in the quality of work performed by the staff of the **General Services Department**. The domestics, cleaners and orderlies who make up the department are responsible for a large amount of the praise given to the hospital for its cleanliness and the cheerful nature of the staff. There has been a large emphasis placed on staff training during the year and both domestic and cleaning staff have benefited from these programmes. One of the significant changes during the year for the general services department was to stop using disinfectant throughout the whole hospital and confine its use to only high-risk areas. Since September 1982 general ward areas have been cleaned with detergent instead of disinfectant.

Another department which runs the risk of being taken for granted because of the consistently high quality of their work, is the **Group Linen Service**. As with the other support-service departments, the laundry staff make a necessary and important contribution to the care of patients. The laundry staff process linen for twenty-four institutions throughout the Wimmera, averaging 19 tonnes a week. Highlights of the year included the installation of a new 55 kilogram Combex washer and the review of all washing cycles.

These changes will enable the laundry to produce even cleaner linen whilst also increasing the machine loading capacity for smaller items of linen.



From left: Mr. Campbell Mitchell and Mr. Laurie Hirst in front of the new Combex washer in the Wimmera Hospital's Group Linen Service.

The hospital's **Personnel Department** exists to service the needs of all our employees, and is actively involved in the procedures of staff selection and induction, payroll processing, staff training and control over the staff budgetary levels set by the Health Commission. The new-look Base Bulletin originates from this department and a monthly circulation of 500 copies ensures that interesting hospital events/gossip/news are circulated to all concerned.

Our personnel budget of 439.94 equivalent full-time staff has been reviewed by the Health Commission and now the numbers and award classifications of staff for each department in the hospital have been set. During the year Paul O'Connor was promoted to the position of administrative officer-general and Peter O'Beirne was promoted to the position of paymaster. Phillip O'Connor completes the pay office team which is now responsible for processing twelve payrolls for health care organisations throughout the Wimmera.



Personnel Manager, Mr. Stuart Schneider, shown with payroll staff Mr. Peter O'Beirne and Mr. Phillip O'Connor.

The **Business Administration Department** is charged with the responsibility for controlling the hospital's finances. This control is provided through the determination of financial policy, the formulation of budgets, financial and cost analyses, management reporting, general accounting functions, as well as the administration of annexe and associated institution accounting functions. The hospital's departments have responded well to the pressures imposed by the continuing climate of financial restriction, and the monthly budget reports distributed to departments have assisted in this regard. For the business administration department, the year has been notable for the continuing emphasis on prompt patient fee collections, prudent investment of the hospital's capital funds and a consolidation of accrual accounting techniques to the stage where all management financial reports are now accrual as opposed to cash based.



Purchasing Officer, Mr. Maurie O'Connor enters the new sterile stock room.

Within the ambit of business administration is the **Purchasing and Supply Department** which is responsible for the purchase of all goods and materials needed for the day to day running of the hospital and its annexe and associated institutions. Stock levels are held to a workable minimum as a result of the imprest system used to distribute inventories to departments. The installation of a sterile stock room within the department, and the development of computerised stores control have assisted the distribution and control of quality stock items. It is hoped that further development of this computerised control system will assist the department's staff in maintaining the records for approximately one thousand different stock items ordered and received through the store.

Murray Williams
ASSISTANT MANAGER

ADMINISTRATIVE STAFF

at June 30, 1983

ASSISTANT MANAGER:

Mr. M. D. Williams, B.Bus., M.H.P., A.A.S.A., A.H.A. (Prov.)

FINANCE MANAGER:

Mr. G. R. Mason, B.Bus.

ADMINISTRATIVE OFFICERS:

Mr. R. T. Haby, B.H.A., A.H.A. (Prov.), C.D.
Mr. P. T. O'Connor

GENERAL SERVICES MANAGER:

Mr. B. N. Waixel

PERSONNEL AND TRAINING MANAGER:

Mr. S. M. Schneider, B.S.c., Dip.Ed., B.Ed. (Admin.)

CHIEF ENGINEER:

Mr. T. R. Martin, M.I.H.E., M.A.I.R.A.H.

ADMINISTRATION OFFICER:

Mr. R. S. Cox, A.F.C.I.A., M.I.H.C.

REGIONAL RELIEVING MANAGER:

Mr. J. W. F. Walker, B.H.A., L.H.A.

PURCHASING OFFICER:

Mr. M. J. O'Connor, J.P.



THE COMMUNITY IN THE HOSPITAL

LADIES' AUXILIARY

A busy and rewarding year has been enjoyed by the auxiliary members, culminating in the record amount of \$11,375.60 being presented to the hospital.

We thank the people of Horsham and district for their generous support of, and donations for, our Opportunity Shop, social functions and the raffle kiosk.

We are also most appreciative of the help given us by the various ladies church guilds and district clubs, members of Apex and the Horsham Pipe Band, the Mail-Times and local radio stations, hospital staff members and those friends of the auxiliary who have so kindly lent their homes for our parties.

To the auxiliary members, my sincere thanks for a very happy year as your president and my very best wishes for the continuing success of your voluntary work.

(Mrs) June Griffith
President

RED CROSS LIBRARY

It is my pleasure to present the annual report of the Red Cross Library on the 4th floor of the hospital.

The year has been very busy delivering books to the patients and we also hung two new picture libraries, one in the Day Centre and one in the Geriatric Unit. We also have one in Sir Robert Menzies Nursing Home. These prints are exchanged every three months, they are sent from Red Cross headquarters. They are very much admired and appreciated.

Our Library consists of many interesting books including large print which are much in demand from the aged. We exchange the books often from headquarters where they are cleaned and covered by a band of women workers before being sent out to hospitals and nursing homes.

In February our unit served afternoon tea to patients in the hospital's Menzies Wing to mark Senior Citizen's Week. Mrs. Roma Carlson and her entertaining group entertained them with singing and dancing; it was a very enjoyable afternoon for all.

In December we had a visit from Mrs. Marland, Assistant Director of Hospital Services, and Mr. Hart. They were very impressed with our hospital and our work at the Library.

At Christmas we held our usual party at the Geriatric Unit when the patients were entertained and given a gift. These we buy from a stall held at our meetings. Afternoon tea was served by the Red Cross members. Our thanks go to Miss. Julie Smith for entertaining them. R.S.L. parcels are wrapped and sent from headquarters at Christmas.

During the year we were all very sad at the death of one of our loyal helpers. Mrs. Pat Collins. Pat will be greatly missed by us all.

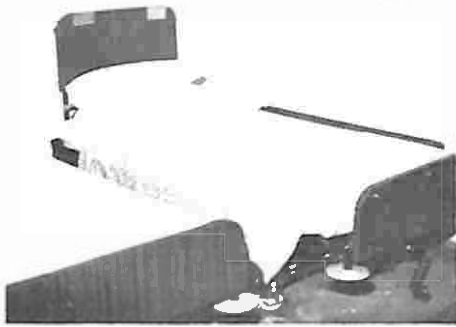
Red Cross certainly gives a lot of pleasure through helping others. When we see the happiness they gain from our visits and assistance it is very rewarding.

In closing my report I would like to thank my assistant, Miss Crafter for her help at all times and to Mr. Capp for help and any advice we needed. To Mrs. Keye, to Matron, Sisters and Nursing Staff for kindness and co-operation during the year. To Miss Maureen White Director Hospital Service's, Mrs. Marland Assistant Director Hospital Service's, and to the people of Horsham and district for books and to all other concerned as this certainly makes our Library work a happy and rewarding one.

Thelma Cain
Librarian



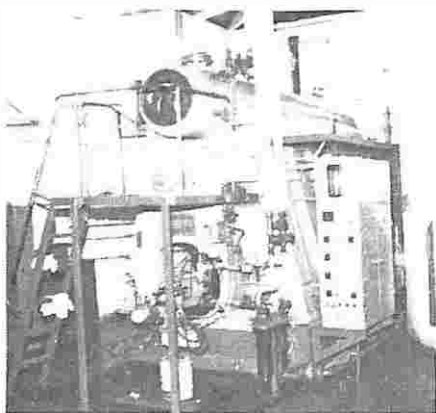
STATISTICS FOR 1982-83



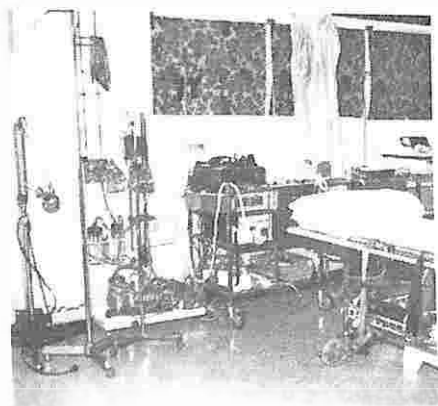
ADMISSIONS
1981/82 3,254
1982/83 3,546



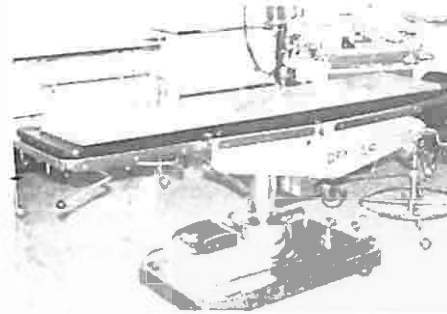
MEALS PREPARED
1981/82 237,020
1982/83 244,953



STEAM GENERATED
1981/82 13,484 tonnes
1982/83 15,023 tonnes



CASUALTY
1981/82 9,062 attendances
1982/83 9,926 attendances



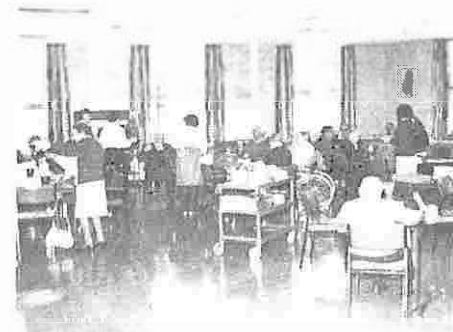
THEATRE OPERATIONS
1981/82 1,634
1982/83 1,608



LAUNDRY
1981/82 975 tonnes
1982/83 1,021 tonnes



DENTAL CLINIC
1981/82 3,357 attendances
1982/83 4,134 attendances



DAY CENTRE
1981/82 5,576 attendances
1982/83 5,750 attendances



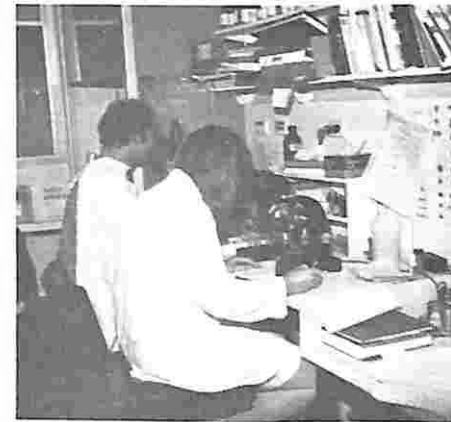
DISTRICT NURSING
 1981/82 18,242 visits
 1982/83 19,909 visits



SOCIAL WELFARE
 1981/82 3,279 consultations
 1982/83 2,721 consultations



X-RAY
 1981/82 7,375 examinations
 1982/83 7,319 examinations



PATHOLOGY
 1981/82 19,139 attendances
 1982/83 21,999 attendances



PHARMACY
 1981/82 115,720 items dispensed
 1982/83 132,709 items dispensed



PHYSIOTHERAPY
 1981/82 3,193 attendances
 1982/83 3,973 attendances



OCCUPATIONAL THERAPY
 1981/82 18,328 treatments
 1982/83 16,863 treatments



SPEECH THERAPY
 1981/82 2,556 attendances
 1982/83 2,750 attendances

WIMMERA BASE HOSPITAL

CONSOLIDATED STATEMENT OF REVENUE AND EXPENDITURE FOR HOSPITAL AND NURSING HOME SECTIONS FOR THE YEAR ENDED JUNE 30, 1983 OPERATING ACCOUNT

	1982	1983
Revenue		
Hospital revenue		
Government grants	\$6,895,923	\$7,917,578 (1)
Inpatient fees	1,159,169	1,559,606 (2)
Non inpatient fees	486,545	457,224
Meals and accommodation	86,324	86,932
Meals on Wheels	20,618	36,664
Other revenue and recoveries	23,511	32,627 (3)
Total hospital revenue	<u>\$8,672,090</u>	<u>\$10,090,631</u>
Nursing home revenue		
Government grants	864,928	1,005,558 (4)
Patient fees	289,107	399,589
Total nursing home revenue	<u>\$1,154,035</u>	<u>\$1,405,147</u>
Combined total	<u>\$9,826,125</u>	<u>\$11,495,778</u>
Expenditure		
Salaries and wages	\$6,805,355	\$8,147,084
Payment to visiting medical officers	168,246	192,770
Superannuation	68,250	97,143
Food supplies	278,369	323,056
Medical and surgical supplies	163,506	213,675
Special service departments	135,732	149,698
Drug supplies	153,892	178,164
Fuel, light and power	292,236	317,503
Domestic and laundry charges	457,441	465,493
Renovations and equipment	162,913	195,564
Repairs and maintenance	147,179	171,329
Administrative expenses	324,368	370,347
Other expenses	299,698	638,973 (5)
Surplus for year	<u>\$9,457,185</u>	<u>\$11,460,799</u>
	368,940	34,979
	<u>\$9,826,125</u>	<u>\$11,495,778</u>

OPERATING FUND

Accumulated surplus (deficit) as at 1 July 1982	\$395,726	\$155,008
Less repayment of prior year cash surplus (deficit)	(10,589)	242,845
Add surplus for year	368,940	34,979
Less funds applied to reduce accumulated surplus	620,247	105,342 (6)
	<u>\$155,008</u>	<u>\$(158,200)</u>

WIMMERA BASE HOSPITAL BALANCE SHEET AS AT JUNE 30, 1983 OPERATING FUND

	1982	1983
Assets		
Advanced accounts and cash on hand	\$16,470	\$31,490
Investments short term secured	489,000	—
Debtors — Patient	364,461	528,636 (7)
— Other	100,456	83,062
Accrued income	—	16,151
Stores	133,039	133,585
	<u>\$1,103,426</u>	<u>\$792,924</u>
Liabilities		
Bank overdraft	\$344,459	\$133,255
Accrued salaries and wages	26,220	82,707
Creditors	303,251	324,251
Provision for long service leave	265,768	390,666
Accrued annual leave	8,720	20,245
Fund		
Fund surplus (deficit)	155,008	(158,200)
	<u>\$1,103,426</u>	<u>\$792,924</u>

STATEMENT OF BALANCES AS AT JUNE 30, 1983
CAPITAL FUND

Assets		Liabilities (9)	
Cash at bank	\$11,703	Loan accounts	\$24,557
Investments	288,000	Tenant bonds	300
Land and buildings	4,343,632 (10)	Fund balance	5,477,641
Plant and equipment \$1,091,242 (10)			
Less provision for depreciation	<u>232,079</u>		
	859,163		
	<u>\$5,502,498</u>		<u>\$5,502,498</u>

SPECIAL PURPOSES MEDICAL TRUST FUND

Cash at bank	\$11,380	Fund balance	\$411,078
Investments	325,000		
Motor vehicles at cost	39,108		
Other debtors	19,249		
Ultrasound loan account	16,341		
	<u>\$411,078</u>		<u>\$411,078</u>

SPECIFIC PURPOSES FUND

Cash at bank	\$1,054	Fund balance	\$283,754 (8)
Investments	282,700		
	<u>\$283,754</u>		<u>\$283,754</u>

**WIMMERA BASE HOSPITAL ANALYSIS OF MAJOR BANK ACCOUNTS
FOR THE YEAR ENDED JUNE 30, 1983**

CAPITAL BANK ACCOUNT SUMMARY

Receipts		Payments	
Balance July 1st, 1982	\$39,453	Land and buildings	\$22,838
Interest received	10,693	Interfund transfers	29,905
Rent	27,018	Transfer to investments	288,000
Donations	21,036	Balance June 30, 1983	11,703
Sundry receipts	14,272		
Government grants	239,974		
	<u>\$352,446</u>		<u>\$352,446</u>

SPECIAL PURPOSES MEDICAL BANK ACCOUNT SUMMARY

Receipts		Payments	
Balance July 1st, 1982	\$63,099	Equipment	\$152,234
Interest received	41,562	Private practice expenses	58,582
Ultrasound receipts	36,184	Ultrasound loan account	31,459
Private practice income	187,810	Transfer to investments	75,000
	<u>\$328,655</u>	Balance June 30, 1983	11,380
			<u>\$328,655</u>

SPECIFIC PURPOSES BANK ACCOUNT SUMMARY

Receipts		Payments	
Balance July 1st, 1982	\$43,219	Equipment	\$6,559
Interest received	96,068	Transfer to investments	182,000
Donations	22,199	Training expenses	4,139
Interfund transfers	29,905	Balance June 30, 1983	335
Other	1,642		
	<u>\$193,033</u>		<u>\$193,033</u>

NOTES ON FINANCIAL STATEMENTS
NOTES TO AND FORMING PART OF THE ACCOUNTS

(1) Government grants

Grants received were:	
Ordinary	\$7,295,000
Specific purpose grants (Collective buy)	11,790
Works and services	205,910
Visiting nurses	51,285
P.A.D.P.	6,593
Employment	46,793
Home nursing subsidy	35,388
Costs met by Health Commission	258,542
Other	6,277
	<u>\$7,917,578</u>

(3) Other revenue and recoveries

Sale of surplus goods	\$3,741
Mortuary fees	798
Sundry	7,171
Reimbursement of workers compensation	20,917
	<u>\$32,627</u>

(5) Other expenses

Depreciation	\$61,958
Costs met by Health Commission	258,542
Additional provision for long service leave	164,802
Provision for annual leave	11,524
Increase Stock	(546)
Ambulance	100,083
Consultant fees	22,842
Other	19,768
	<u>\$638,973</u>

(7) Debtors

Inpatients	
Private	\$185,724
Motor accident	34,993
Workers compensation	6,334
Repatriation	<u>32,333</u>

Less provision for doubtful debts	\$259,384	
	<u>14,801</u>	\$244,583

Outpatients		
General	\$154,543 ★	
Less Provision for doubtful debts	<u>8,803</u>	145,740

Motor Accident Board	\$5,810	
Less provision for doubtful debts	<u>775</u>	5,035

Workers compensation	\$7,825	
Less provision for doubtful debts	<u>1,206</u>	6,619

Nursing Home		
Patient fees		42,780
Commonwealth Department of Health		83,879

★ Includes special purposes debtors

\$528,636

(2) Inpatient fees

Private	\$1,283,389
Motor Accident Board	94,881
Workers Compensation	37,439
Repatriation	143,897
	<u>\$1,559,606</u>

(4) Nursing home revenue government grants

Grants received were:	
Ordinary	\$34,000
Department of Health	947,492
Pharmaceutical benefits	24,066

\$1,005,558

(6) Applied to balance of fund

The following adjustments were made to enable a more accurate result for this financial year to be reported.

Prior year adjustments	
Patient fees outstanding	\$14,061
Employment grant	17,491
Long service leave	(29,053)
	<u>\$2,499</u>
Other	
Transfer of provision for depreciation to capital account	61,958
Assets funded under minor works	(134,081)
Sundry debtors	(35,718)
	<u>(\$105,342)</u>

AUDITOR'S REPORTS

WIMMERA BASE HOSPITAL

We report that we have examined the accounts of the Wimmera Base Hospital and Sir Robert Menzies Nursing Home for the year ended 30th June, 1983.

Our examination included auditing procedures and tests of the records which we considered necessary in the circumstances.

In preparing the financial statements, the hospital has not provided for depreciation of buildings (refer to accounting policies). This is a departure from a statement of accounting standards issued by the Institute of Chartered Accountants in Australia and Australian Society of Accountants.

Subject to the above, in our opinion, the accounts are properly drawn up in accordance with the requirements of the Health Commission of Victoria so as to give a true and fair view of the institutions financial affairs as at 30th June, 1983 and of the results of its operations for the year ended on that date.

The accounting and other records examined by us have been properly maintained in accordance with the provisions of the Health Commission of Victoria's Cost Centre Accounting and Budgeting Systems Procedures Manual.

GREEN, TAYLOR AND GREENALL
CHARTERED ACCOUNTANTS

WIMMERA HOSPITALS' GROUP LINEN SERVICE

We report that we have examined the accounts of the Wimmera Hospitals' Group Linen Service for the year ended 30th June, 1983.

Our examination included such auditing procedures and tests of the records which we considered necessary in the circumstances.

In preparing the financial statements, the organisation has not provided for depreciation of buildings. This is a departure from the statement of accounting standards issued by the Institute of Chartered Accountants in Australia and the Australian Society of Accountants.

Subject to the above, in our opinion, the accounts are properly drawn up so as to give a true and fair view of the organisations financial affairs at the 30th June, 1983 and of the results of its operations for the year ended on that date.

GREEN, TAYLOR AND GREENALL
CHARTERED ACCOUNTANTS

STATEMENT OF ACCOUNTING POLICIES

The accounting policies of the hospital are as follows:

- (a) The accounts of the hospital are prepared and published in accordance with the requirements of the Health Commission of Victoria and normally accepted accounting principles with exceptions being:
 - (i) No provision has been made for the depreciation or revaluation of buildings. Buildings are recorded in the capital fund at cost.
 - (ii) The financial statements have been prepared on the basis of the historical cost convention, with the exception of investments which are valued in accordance with note (b).
- (b) Investments
It is the hospital's policy to hold investment securities until maturity and consequently no provision for diminution to market value is required.
- (c) Income and investments
 - (i) Income from capital investments has been credited directly to the capital account.
 - (ii) Income from investment of endowment and specific purpose funds has been credited directly to the relevant trust fund.
 - (iii) Income from short term investment of operating funds has been credited directly to the specific purposes account.
 - (iv) Income from investments has not been brought to account in determining the year's operating result. This is consistent with prior years.
- (d) Stock on hand
Stocks on hand include all stores in the General Stores and Pharmacy. Stocks on hand are valued at latest purchase price, which is consistent with prior years.
- (e) The accounts of the hospital have been prepared on the basis of accrual accounting. Provisions have been made for long service leave, annual leave, doubtful debts and depreciation of plant and equipment costing more than \$10,000.00 per item.

WIMMERA BASE HOSPITAL DONATIONS FOR THE YEAR ENDED 30-06-83

Abbotts Drug Company		Rotary Club of Horsham	200.00
— W. Mitchell	\$ 50.00	Russell, Elsie Edna	50.00
Anonymous	5,507.00	Rutter, Alec	20.00
A.R.C. Engineering	10.00	Sadies Club	1,000.00
Australion Paper		Sanders, H. J.	10.00
Manufacturers	750.00	Schultz, A. L. Estate of	1,715.37
Barkuma Club	497.76	Sinclair, N. J.	5.00
Brain, Mrs. L.	30.00	Smith, M.A.R.	50.00
Buckler, J. A.	50.00	Snibson, A. G.	400.00
Catholic Women's League	20.00	Spencer, Mrs.	2.00
Collection barrel	114.43	St Michael's School	50.00
Collier Custodian		State Treasury of Victoria	166.00
Corporation	2,000.00	Stewart, Ruby	20.00
Coustley, Rachel, Estate of	764.40	The Equity Trustees	4.00
Crellin, Mr. and Mrs. F.	10.00	The Sun News Pictorial	100.00
Dickens, J. M.	100.00	Timms, Mrs.	20.00
Dooen Ladies Guild	17.00	Tonkin, Mr. R.	20.00
Edmonds, W. M.	10.00	Troeth, Phil	1,947.93
Freeman, Mrs. A. S.	300.00	Turner, Rosa	5.00
Giddings, Mrs.	5.00	Trye, Mrs. R. and Family	20.00
Greek Community	828.35	Uncle Bob's Club	4,839.00
Hatcher, Mr. R.	5.00	Van Dyk, J. H.	1,000.00
Hill, D. I.	100.00	Victorian Hospitals'	
Hooper, Annie	50.00	Association	871.22
Horsham Company of		Weir, Mrs. E.	5.00
Archers	30.00	White, Mrs. H.	5.00
Horsham Darts Association	600.00	Whitehead, Miss Elsie J.	200.00
Horsham and District Cancer		Wimmera Base Hospital	
Crusade	244.35	Ladies' Auxiliary	11,375.60
Horsham and District		Wimmera Mallee Radio	
Diabetic Group	100.00	Appeal Committee	200.00
Horsham High School	160.00		
Horsham Old Time Dance			
and Social Club	100.00		
Houston, Mrs. D.	29.41		
Houston, Mrs. O.	5.00		
Kealy, Miss M.	200.00		
Kemp, E. O.	50.00		
Kroschel, Daryl	4.00		
Lardner, Mrs.	10.00		
Lions Club Horsham	1,450.00		
McCarthy, W. B.	10.00		
McFarlane, Mrs. N.	5.00		
McKee, Mrs. M.	5.00		
McLean, Mrs. Ada	10.00		
McLean, Christina	16.50		
McLean, Miss H.	5.00		
Membrey, J. E.	10.00		
Mitchell, H. and L.	10.00		
Mitchell, H. M.	20.00		
Mitchell, I. A.	10.00		
Mossop, G. and J.	10.00		
Muhlnickel, Miss E.	500.00		
Murra Warra Ladies Club	25.00		
Nixon, E. W. and A. E.	20.00		
Obst, Mr. and Mrs. G. and			
Family	6.00		
Pethard Tarax Charitable			
Trust	500.00		
Pickering, E.	20.00		
Rahley, Mr. M. D.	20.00		
Rentsch, Mrs.	20.00		
Rentsch, Mrs. Klara	5.00		





Members of the Wimmera Base Hospital Sadies Club presenting the hospital with a trolley for the resuscitation and recovery room.

LIFE GOVERNORS

ABUD, Dr. R. E.
 ANDERSON, Mrs. A.
 AUMANN, Mr. R. E.
 BEYNON, Mr. J. H.
 BOEHM, Mrs. G. E.
 BRIDGE, Dr. A. L.
 BROWNBILL, Mrs. K.
 BUTLER, Mr. L. H.
 CAIN, Mrs. T.
 CARTER, Mrs. V. A.
 CATHCART, Miss R.
 CATHCART, Miss D.
 CORNER, Mrs. P.
 COURTNEY, Miss A. R.
 CRAIG, Miss M. E.
 DRAFFIN, Mr. I.
 GARTH, Mr. D. J.
 GILL, Mr. W.

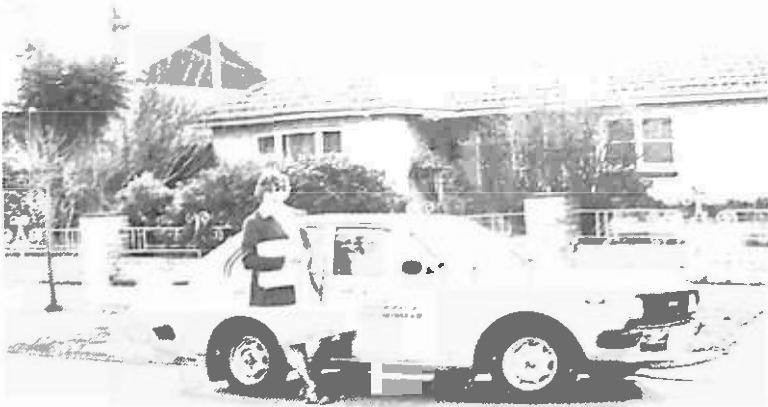
HANNA, Mr. W. T.
 HARDINGHAM, Mrs. M.
 HARFIELD, Mrs. D.
 HEALEY, Miss N.
 HOPKINS, Miss E. V.
 JOHNS, Mr. A. A.
 KROKER, Mrs. C. O.
 LEITH, Mr. C.
 LEIVESLEY, Mr. A. G.
 LEYTON, Dr. G. B.
 LOVETT, Mr. K. H.
 McFARLANE, Mr. D.
 McINTYRE, Miss V. C.
 MONTGOMERY, Mrs. L.
 MOORE, Mr. L. G.
 O'BRIEN, Dr. M. M.
 O'CONNOR, Mr. K. J.
 PASCALL, Mrs. L. G.

PHILLIPS, Mr. A. W.
 PIETSCH, Mr. E. B.
 POWELL, Mrs. J.
 REID, Mr. L. E.
 ROBERTSON, Mr. P.
 RUSSELL, Mrs. E. W.
 RUSSELL, Mr. M. S.
 SCHULTZ, Mr. F. P.
 SCHURMANN, Miss N. J.
 SHEPHERD, Mr. R. W.
 SMITH, Miss M. A. R.
 STEWART, Mrs. R. V.
 STENHOUSE, Miss L.
 TIPPETT, Mrs. A. M.
 TROETH, Mr. P.
 WALPOLE, Dr. T. V.
 WEBSTER, Prof. R. W.
 WIK, Mrs. W. M.

CENTENARY GOVERNORS

BETHELL, Mr. R.
 BROWNSTEIN, Mr. E. G.
 CHISHOLM, Mr. G.
 COUTTS, Mr. P. A.
 CRELLIN, Mrs. E.
 CUDDIHY, Mr. M. W.
 EDWARDS, Mr. R. G.
 ELDRIDGE, Mr. E.
 FINCH, Mr. A.
 FRANCIS, Mr. S.
 GRANT, Mr. R. G.
 HEARD, Mr. G. B.
 HILL, Mrs. D.
 JENKINSON, Mr. C.
 JOHN, Mr. M. D.
 LIND, Mr. G. B.
 MATUSCHKA, Mr. E.
 MOORE, Mr. L. G.
 MUHLNICKEL, Mr. V. F.
 O'BRIEN, Dr. M. M.
 PATTERSON, Mr. R.
 RODDA, Mrs. H.
 ROGERS, Mr. B.
 SMITH, Miss M. A. R.
 TAYLOR, Mr. M. H.
 VANDYK, Mr. J. A.

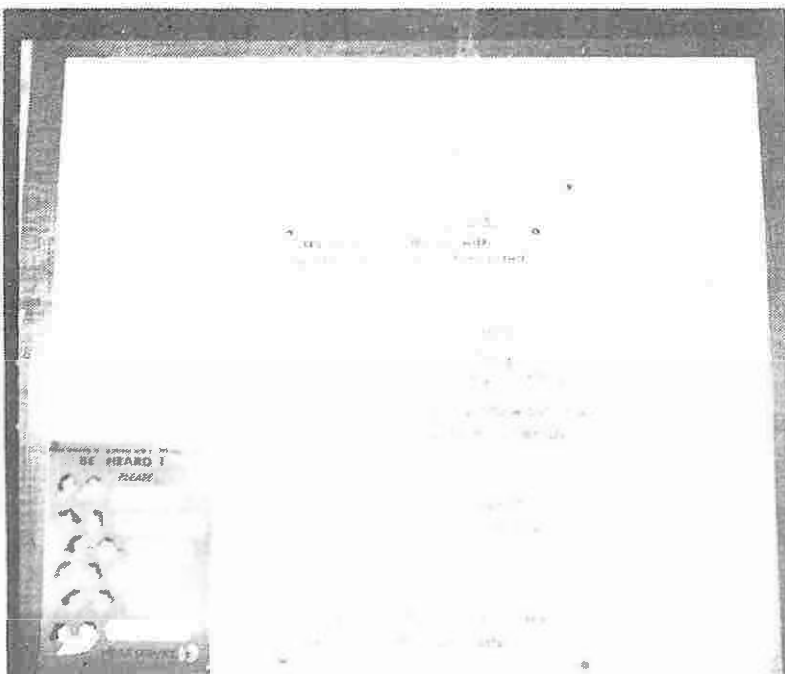
THE HOSPITAL IN THE COMMUNITY



District Nurse Christine Ramsdall on district nursing visits.



The City of Horsham Welfare Officer Mr. Anthony Amor, organising Meals on Wheels.



Sign showing the hospital's handyman service offered to the elderly.



From left: Social Welfare staff, Mrs. Joy Anderson and Miss Lesley Shipham pictured discussing welfare matters.