



Identifying research priorities to optimize allied health care

A modified Delphi study

Dr J Aitken^{1,2}, J Ananthapavan², Dr R Clapham^{3,4}, Dr A Donaldson², A/Prof K McNamara⁴
Dr A Ugalde⁴, A/Prof V Versace⁴, A/Prof A Wong Shee^{3,4}

¹ Rural Northwest Health, ² La Trobe University, ³ Ballarat Health Services

⁴ Deakin University

Contact Renee.Clapham@bhs.org.au





Local issues aren't always addressed in research



People should have a say in research that impacts them

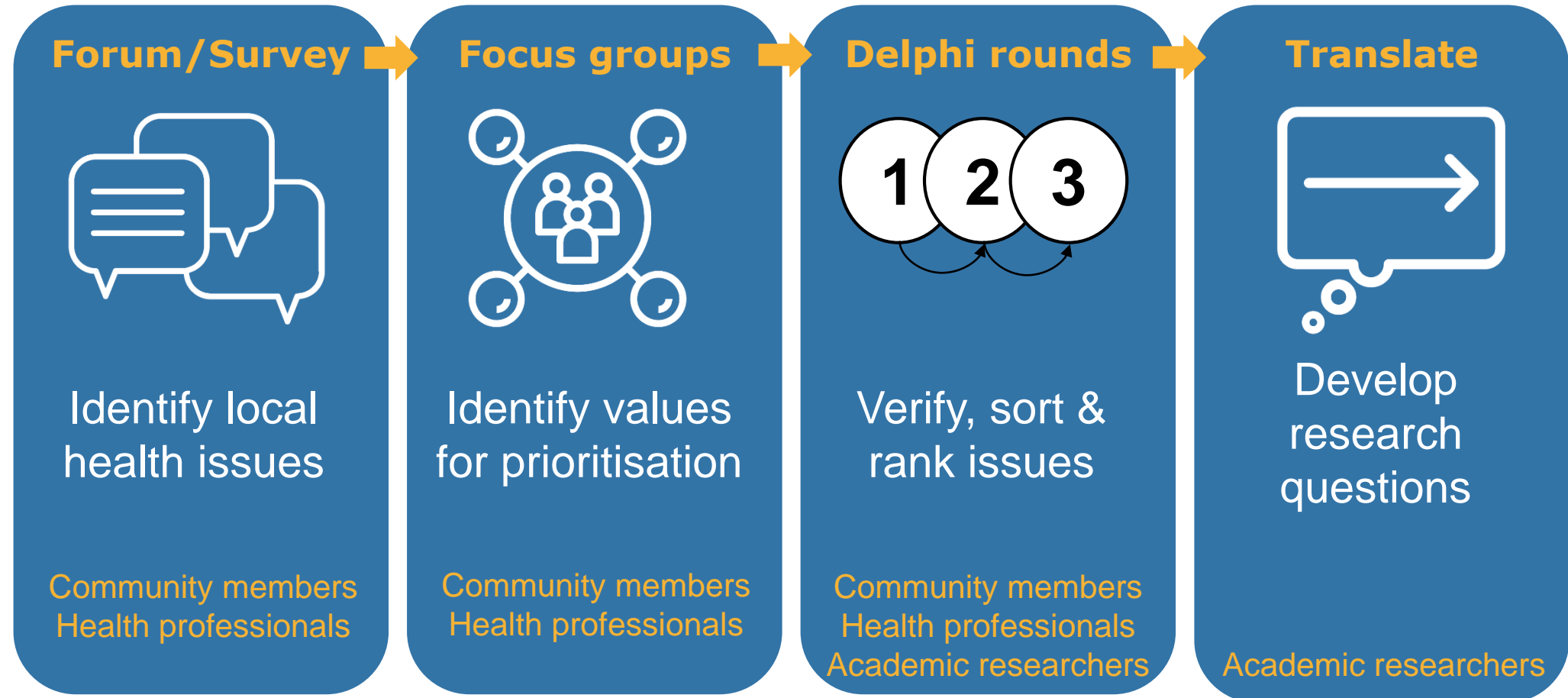


Research drives evidence-based practice

This study engages community, clinicians and researchers to

- Identify regional priority health issues
- Translate priority issues into research questions related to allied health practice

Study design



Access



- Availability of specialists and other providers
- Lack of experienced health providers
- Limited support services

Cost



- Chronic conditions require ongoing care
- Urgent care fees in rural areas

Isolation



- Geographical (distance to services)
- Social (older populations)

Culture



- Sport associated with drinking
- Social stigma
- Lack of support for healthy dietary choices

Implications for future practice

Transparent processes for setting allied health research priorities will

- ★ enhance the relevance of health research,
- ★ facilitate adoption of findings into practice and
- ★ improve patient outcomes

This project will give clinicians and consumers a voice and ownership in regional research decision-making