



The Queen Elizabeth Home

and Hospital for the Aged

●

ANNUAL REPORT

1965

Architect's impression of proposed Day Hospital

*With the Compliments of
The President, Mr. John L. Trevenen
and Members of the
Board of Management of
The Queen Elizabeth Home*

*Your past support is appreciated and your
continued assistance in this current year invited.*

The One Hundred and Eighth

ANNUAL REPORT

of the Board of Management

for the Year ended 30th June, 1965

To the Contributors of the Queen Elizabeth Home.

Ladies and Gentlemen,

It is my privilege on behalf of the Board of Management to present the One Hundred and Eighth Annual Report and Statement of Accounts for the year ended 30th June, 1965.

RETIREMENT EXECUTIVE DIRECTOR, Mr. KEITH MACKAY

In the last Annual Report specific reference was made to the forthcoming retirement of Mr. Keith Mackay, M.B.E., who occupied the position of Chief Executive Officer for a period of more than 26 years. On the evening of 30th September your Board tendered a Complimentary Dinner to Mr. and Mrs. Mackay, when opportunity was taken to make a presentation on behalf of the Board and its past and present members, and the Commissioners of the Hospitals and Charities Commission who were present to express their deep appreciation of the outstanding service rendered by Mr. Mackay over this period.

BOARD MEMBERS

Your Board received with regret the resignation of Mr. John Keith who was appointed to the Board in 1925 and occupied the position of



Mr. Keith Mackay "hands over" to his successor, Mr. Frank Black, on 1st October, 1964

THE QUEEN ELIZABETH HOME

102 ASCOT STREET SOUTH,
BALLARAT

P.O. BOX 199

PHONE: BALLARAT 2 1811

* *

HOSTELS:

PLEASANT HOME

34 Pleasant Street, Ballarat
Phone: Ballarat 2 1841

ANDREW C. FRASER HOUSE

32 Pleasant Street, Ballarat

K. S. B. ARCHER HOUSE

30 Pleasant Street, Ballarat

JOHN KEITH HOUSE

28 Pleasant Street, Ballarat

EUREKA HOUSE

37 Durham Street, Ballarat

DURHAM HOUSE

39 Durham Street, Ballarat

C. N. C. EYRES HOUSE

810 Ligar Street, Ballarat
Phone: Ballarat 2 4720

BALMORAL

1104 Dana Street, Ballarat
Phone: Ballarat 2 1069

BRIM BRIM

Buninyong
Phone: Buninyong 379

NURSING AIDE

TRAINING SCHOOL

111 Ascot Street, Ballarat

A. E. MILLS HOUSE

CRAFT SCHOOL

Phone: Ballarat 2 4550

THE QUEEN ELIZABETH HOME

* *

OFFICE-BEARERS FOR THE YEAR 1964-65

President :

J. L. TREVENEN, Esq.

Vice-Presidents :

J. LONSDALE, Esq.

A. T. FAULL, Esq.

Hon. Treasurer :

JAS. A. THOMAS, Esq.

President in 1931. During this period of 40 years, Mr. Keith rendered outstanding service to the Queen Elizabeth Home as a member of the Board of Management and as a friend to the residents, whom he regularly visited. During this period, Mrs. Keith has also carried out an active part in assisting the residents of the Home as a member of the Ladies' Auxiliary. Your Board takes this opportunity of recording its deepest appreciation of the services of Mr. John Keith.

We welcome to the Board Mr. W. Messer Junior, who has been appointed to the vacancy created by Mr. Keith's resignation.

FINANCIAL

The financial statements are set out in detail. This year the amount of finance available for institutions was very limited and although our income did increase from £473,580 to £515,861, the expenditure rose from £471,412 to £517,927, resulting in a deficit for the financial year of £2,066. The cost per day has risen from 34/10 to 37/- which, however, compares more than favourably with other institutions in the State. This increase in cost has been brought about by conditions beyond the control of your Board through increasing prices and amendments to award wages.

GEO. SKERRITT DAY HOSPITAL AND GERIATRIC UNIT

Over a period of years the Queen Elizabeth Home has developed from an institution which provided accommodation only to a complex organisation providing a variety of services aimed not only at the rehabilitation of residents but the welfare in general of all aged people in need.

As a result, the waiting lists are increasing rapidly and although members of your Board have this matter under continual review, it has become more and more evident that it would be economically impossible to provide full time accommodation for all people who apply, and it is little consolation to know that this problem is one which faces not only the Queen Elizabeth Home but is worldwide.

Your Board, aware of the importance of Day Hospital Services, which mark another change in the modern approach to the care of the aged people in the community, introduced a limited service.

When this present service was established, it was anticipated that it could cater for a maximum of 10 patients per day for three days per week. However this project filled such a need and the demand was so great that a daily average of 35 aged people attend the Home each day for 5 days per week.

This has thrown a great strain on the accommodation and services of the Home, and it is of great satisfaction to report that sketch plans for the new Day Hospital have now been completed to the satisfaction of your Board and the Hospitals and Charities Commission.

As the erection of the Day Hospital will necessitate the demolition of Victoria Ward, the Smoke Room and the Sun Room, with the subsequent loss of beds, it is your Board's hope that it will be possible to provide three floors above the Day Hospital for additional accommodation mainly for short stay patients.

However this additional work will depend on the amount of finance available. Life Governors and Contributors will recall that the sum of £100,000 is available as the Home's proportion of the cost of this project, and that the Premier of Victoria, the Hon H. E. Bolte, M.L.A., gave the assurance that a Government Subsidy of £3 for £1 would be provided.

The past year has therefore been one of consolidation preparatory to the erection and functioning of the new Day Hospital, but it is confidently anticipated that all the preliminary work associated with this project will be completed and tenders called in the very near future.

BED CAPACITY

Excluding the Percy Baxter Homes and the Eyres House Flats, the Queen Elizabeth Home now has the highest daily average in the State and the accommodation available is as follows —

Main Building — Infirmary	534
Ambulant	152
	<hr/>
	686
Hostels ..	84
	<hr/>
	770
Percy Baxter Homes	36
Eyres House Flats ..	4
Percy and Frederick Lloyd Symons Memorial Flats	10
	<hr/>
	820

The total accommodation figure of 820 beds is 28 more than last year. In addition to the residents accommodated in the Home and the Flats there are 80 who attend Day Hospital and 23 more who are cared for in their own homes.

However despite the increased bed capacity, the waiting lists have increased still further and there are now more than 250 applicants awaiting admission.

It is also of importance to record that included in the daily average of 751 residents accommodated in the Queen Elizabeth Home, 542 are over the age of 70 years, and our oldest resident is Mrs. Edith Davies, who celebrated her 103rd birthday on 22nd June, 1965.



Mr. and Mrs. John Keith together served the Home for a period of 40 years, Mr. Keith as a Board Member and Past President and his wife as a foundation member of the Ladies' Auxiliary

WELFARE SERVICES

The changing requirements in the care of the aged became more evident following the establishment of our Welfare Department in the charge of Sister I. M. Dicker. Sister Dicker retired on 20th February, 1965, and was succeeded by Sister M. Woodford who, with the assistance of Sister N. Wright, who joined the staff on 4th January, 1965, keeps in close touch with applicants on our Waiting List and the Home Visiting Service. Generally applications are received when the applicant feels that he or she has no alternative but to apply for admission to the Queen Elizabeth Home. It is quite evident that a great deal more could have been done for these people if they had received advice and guidance very much earlier on many of their problems. Each year this service is becoming more and more valuable in assessing the real needs of applicants on our waiting lists, and the need for a Consultative Clinic to which any elderly person may come for advice on any problem is becoming more evident.

THE QUEEN ELIZABETH HOME

* *

BOARD OF MANAGEMENT

C. H. CLAMP, Esq.
(Government Nominee)

G. B. CUTTER, Esq.

C. N. C. EYRES, Esq.

A. T. FAULL, Esq.

A. C. FRASER, Esq.

W. H. HEINZ, Esq.

P. S. HOBSON, Esq.

J. KEITH, Esq.
(Retired 21st June, 1965)

J. LONSDALE, Esq.

W. B. MESSER, Esq.
(Appointed 21st June, 1965)

ARTHUR W. NICHOLSON, Esq.
O.B.E.

R. B. RONALDSON, Esq.

J. J. SMALL, Esq.

JAS. A. THOMAS, Esq.

GEO. TORNEY, Esq.

J. L. TREVENEN, Esq.

THE QUEEN ELIZABETH HOME

* *

ADMINISTRATIVE STAFF

Executive Director :

KEITH MACKAY, M.B.E., J.P.,

F.H.A., M.R.S.H.

(Retired 30th September, 1964)

Manager :

FRANK G. BLACK, J.P.

F.C.I.S., F.A.S.A., A.C.A.A.,

A.H.A.

Assistant Manager :

A. D. McMILLAN

Administrative Officer :

R. D. QUIN

Accountant :

F. N. M. PETCH,

A.A.S.A., L.H.A.

Auditors :

Messrs.

G. A. GILLBERT, F.C.A.

I. McIVOR, F.C.A.

MEDICAL SERVICES

The Medical Services of the Home continued on the now accepted high plane. During the year our Medical Superintendent, Dr. J. N. Staddin, resigned and took an appointment with the Mental Hygiene Authority. Members of the Board are extremely grateful to Dr. F. P. McArdle as Senior Visiting Medical Officer who has taken an intense interest and has given considerable invaluable service in the medical administration of the Home during the period the position of Medical Superintendent has been vacant. Our thanks are also expressed to our visiting specialists and visiting medical officers who have rendered such valuable service during the year.

NURSING SERVICES

The present situation relating to residents of the Home is that a greater percentage now require nursing attention and the very high standard of nursing care achieved is a credit to the interest and enthusiasm of our Matron, Sisters and Nurses.

NURSING AIDE TRAINING SCHOOL

During the year under review, 72 students commenced training in the Nursing Aide Preliminary Training School. It is most pleasing to report that of the 50 students who successfully completed the examinations, 7 passed with distinction. We offer our congratulations to all the students and to our Tutor Sisters.

PHYSIOTHERAPY

The Physiotherapy Department, under the supervision of Mr. N. Pierini, is making an outstanding contribution to the comfort and rehabilitation of residents of the Home and patients attending the Day Hospital.

During the year your Board was pleased to make an award of a Physiotherapy Bursary to Miss R. Brown who will join the staff in the Physiotherapy Department on the completion of her studies.

OCCUPATIONAL THERAPY

Miss Rosemary Gale, Occupational Therapist, has returned following her overseas tour and this department functions smoothly in co-operation with the Physiotherapy Department.

The increasing frailty of many of the residents has necessitated the centralisation of the activities and the setting up of additional diversional therapy centres in the Home.

OPTOMETRY

The skilled testing of eyes and the provision of spectacles is a most important contribution to the comfort of elderly people, and your Board again records its thanks to Mr. G. B. Cutter, Optometrist, of Messrs. G. B. Cutter and D. H. Gardiner, for his contribution to this work.

DENTAL SERVICES

The regional dental services continue to operate at Grace McKellar House, Geelong, the Bendigo Home and Hospital, Bendigo, and the Alexander Home at Castlemaine.

HOSTELS

The hostels, Balmoral for men and Pleasant Home, Fraser House, Archer House, Keith House, Eyres House, Durham House and Eureka House for women, continue to operate most satisfactorily.

PERCY AND FREDERICK LLOYD SYMONS MEMORIAL FLATS

In the last Annual Report reference was made to the erection of four self-contained flats containing living room, bedroom, kitchenette, toilet, shower recess and small laundry.

Your Board is deeply indebted to the late Mrs. Violet Symons who bequeathed the sum of £10,145/6/10 to be applied as a memorial to her late husband, Percy, and son, Frederick Lloyd Symons. This money has



Ageing is everybody's business. Students from the Ballarat Junior Technical School carrying gift parcels purchased from monies raised by the students. The parcels were later personally delivered to aged people in need

been used towards the erection of a further eight units which accommodate six single people and two married couples and will be known as the Percy and Frederick Lloyd Symons Memorial Flats. These units are now completed and were officially opened on Sunday, 22nd August, 1965.

PERCY BAXTER HOMES

As a result of the generosity of the Percy Baxter Charitable Trust, it was possible to erect a further ten units and these were opened on Sunday, 18th October, 1964, by the Hon. R. C. Guthrie, C.M.G., representing the Percy Baxter Charitable Trust and the Perpetual Executors and Trustees Association of Australia Ltd.

A further contribution from the Trustees has enabled arrangements to be completed for an additional four units, and these will be in course of construction shortly. The Percy Baxter Homes enable many elderly people to be accommodated under ideal conditions at a very moderate rental, and your Board records its appreciation of the financial support given by the Percy Baxter Charitable Trust which made this development possible.

BUILDINGS AND EQUIPMENT

The value of buildings and equipment is nearly one and a half million pounds. Visitors invariably comment on the cleanliness and condition of the Home, and your Board records its appreciation of the interest and efforts of the Engineering, Maintenance, Artisan and Cleaning Staff who take such a personal interest in maintaining these high standards.

FEMALE STAFF AMENITIES

Your Board is pleased to report that a new amenities block for female staff has been completed. This block will fill a need of which your Board has long been conscious.

GROUP LAUNDRY

It is disappointing to report that no further progress has been made in the matter of the Group Laundry.

This delay has been caused by the destruction by fire of the laundry at the Austin Hospital which had to be rebuilt.

LATE DAVID HANNA, D.C.M.

There are many human interest stories which concern the residents of the Queen Elizabeth Home, of which the following is typical —

THE QUEEN ELIZABETH HOME

* *

HONORARY PROFESSIONAL STAFF

Hon. Consultant Surgeon :

Wm. SLOSS,
M.B.E., M.B., etCh.B.,
F.R.C.S.(Edin.), F.R.A.C.S.

Hon. Optometrists :

Messrs. G. B. CUTTER &
D. H. GARDINER

Hon. Solicitors :

Messrs. CUTHBERT, MORROW,
MUST & SHAW

Hon. Consulting Structural
Engineers and Surveyors :

W. J. & W. L. MEINHARDT

Hon. Architects :

Messrs. P. S. & G. S. RICHARDS,
A.R.A.I.A., Ballarat

THE QUEEN ELIZABETH HOME

* *

STAFF

Medical Services

Medical Superintendent :

Dr. J. N. SLADDIN, M.B.B.S.
(Resigned 13th March, 1965)

Dr. ALEX L. ANDERSON, M.B.B.S.,
D.T.M. & H., M.R.A.C.P.

Medical Officers :

Dr. F. P. McARDLE, M.B.B.S.

Dr. J. R. COUSINS, M.B., B.Ch.,
M.A.(Oxon.)

In 1918 David Hanna, a member of the 46th Battalion, was awarded the Distinguished Conduct Medal for bravery in France. He left the medal with Mr. C. W. Cohen of South Caulfield in 1938 for safe keeping, promising to return and collect it.

When he did not return, repeated attempts to locate him were unsuccessful and it was not until 25 years later that he was traced to the Queen Elizabeth Home, and the precious medal returned to him. Following David Hanna's death on 9th October, 1963, members of the 46th Battalion arranged for the medal to be suitably mounted and it was presented to the Queen Elizabeth Home at a ceremony held on Sunday, 8th November, 1964.

LEGACIES AND BEQUESTS

Members of the Board record their appreciation of the many legacies and bequests received during the year. In every case action is taken to ensure that the monies received are applied in accordance with the wishes of the testator.

WORKS STUDY

The Hospitals and Charities Commission arranged for Works Study Consultants to carry out assignments in the Hospital field, and your Board was happy to allow the Consultants to carry out an assignment at the Queen Elizabeth Home. The reports received from the Consultants have been most interesting to your Board.



103 YEARS OLD. Mrs. Edith Davis is congratulated on the occasion of her 103rd birthday by, from left, the Mayoress of Ballarat, Mrs. J. A. Chisholm, Matron of the Queen Elizabeth Home, Miss W. M. Rollett, the Mayor of Ballarat, Cr. J. A. Chisholm, and the President of the Queen Elizabeth Home, Mr. J. L. Trevenen

ACCOUNTING

The Hospitals and Charities Commission has a great responsibility in allocating the huge amount of money now required to finance Homes and Hospitals in Victoria, and has introduced standard modern accounting systems into Institutions. This has resulted in the mechanisation of accounting at the Queen Elizabeth Home as from 1st July, 1965.

OTHER INSTITUTIONS

Modern health services are developing rapidly as more specialties are introduced, and these developments require close co-operation between the institutions and their services.

Such close co-operation exists particularly between the Ballarat and District Base Hospital and the Queen Elizabeth Home. Your Board also expresses its appreciation of the courtesy and efficiency of the Ballarat and District Ambulance Service.

BALLARAT DISTRICT NURSING SERVICE

In its varied activities the Ballarat and District Nursing Service also works very closely with our Home Care and Day Hospital Services. The assistance given to Day Hospital patients in ensuring that they are ready for transport to the Day Hospital has been of great importance in the successful functioning of our Day Hospital Services, and we record our appreciation to the Ballarat District Nursing Service.

THE QUEEN ELIZABETH HOME

* *

Dr. J. GARNER, M.B., B.Ch.,
M.R.C.S., L.R.C.P., M.A.

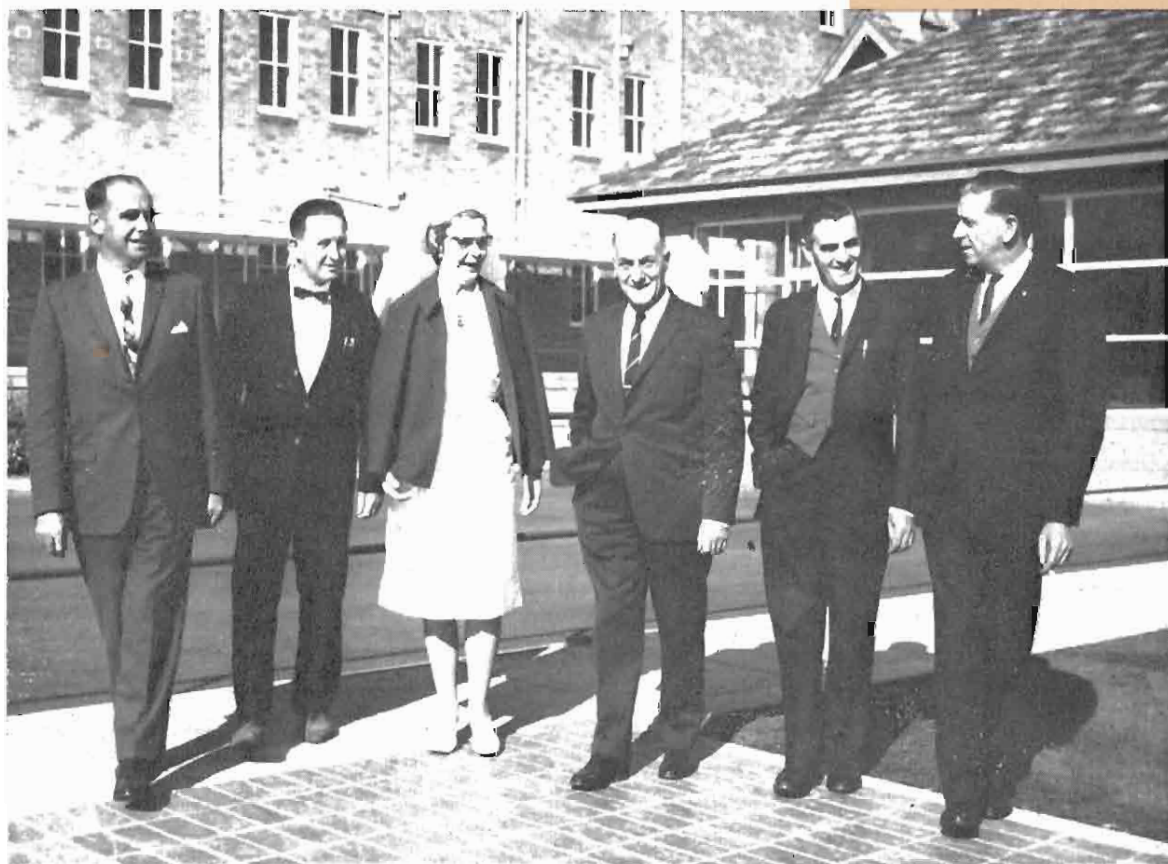
Dr. S. D. GIDDY, M.B. Ch.B.,
D.R.C.O.G., D.A.

Consulting Medical Officers :

Dr. D. A. ALEXANDER, M.D., B.S.,
F.R.A.C.P.

Dr. D. B. SKEWES, M.B., B.S.,
F.R.C.S.(Edin.)

Dr. A. KING, M.B., B.S.(Durham),
D.P.M.(Durham)



Many official visits are paid each year to the Queen Elizabeth Home, and the above scene depicts the evident interest of an overseas Medical Officer who made a study tour on the recommendation of the Hospitals and Charities Commission

THE QUEEN ELIZABETH HOME

* *

Nursing

Matron :

Miss W. M. ROLLETT, S.R.N.

Deputy Matron :

Miss A. CRISPE, S.R.N.

Assistant Matron :

Mrs. D. FLOATE, S.R.N.

Tutor Sisters :

Mrs. P. KILGOUR, S.R.N.

Mrs. L. A. BELL, S.R.N.

Welfare and Home Care Service :

Miss I. DICKER, S.R.N.

Mrs. M. M. WOODFORD, S.R.N.

Mrs. E. MEIKLEJOHN, S.R.N.

Miss N. WRIGHT, S.R.N.

Regional Dentist :

L. BATCHELDER, L.D.S.(Vic.),
B.D.Sc.(Melb. Univ.)

Pharmacist :

J. L. RUSSELL, Ph.C.

Physiotherapist :

NAZARION PIERINI, M.D.P.A.

Speech Therapist :

Mrs. CAROLYN KURI, Ed.D.

Occupational Therapist :

Miss ROSEMARY GALE, A.A.O.T.

Recreational Activities Leader :

Mrs. P. WARHURST

Maintenance

Chief Engineer :

A. HOWELL

Works Foreman :

J. C. McARTHUR

Catering & Personnel Officer

G. H. BAKER, A.H.C.I.

Public Relations Officer

F. A. BEACHAM

ORGANISATIONS

The continued expansion and development of the Home's services would not be possible without the financial support and personal assistance of many organisations and groups, and reference is particularly made to the R.S.S.A.I.L.A., the Mums' and Dads' Association, the many branches of the Country Women's Association, the Red Cross Society, the many Church Ladies' Guilds and Ladies' Auxiliaries, the M. B. John Employees' Charities Group, the Ballarat Travellers' Social Club and the various Social Service Groups from the Schools.

DEPARTMENT OF SOCIAL SERVICES

The numbers of elderly people accommodated at the Queen Elizabeth Home requires close co-operation with the Department of Social Services. The amount of work involved is made much easier by the very happy relationship which exists between the officers of the Department and officers of the Home.

PUBLICITY

It is most important that members of the public are made aware of the activities and development of the Home's Services. Ballarat and district is most fortunate to have such media for publicity as the Ballarat Courier, Ballarat Broadcasters (3BA) Pty. Ltd., and the Television Station, BTW6.

These organisations have most effectively kept the public informed on matters relating to the Queen Elizabeth Home, and your Board records its appreciation to the Management and Staff of the Ballarat Courier, Ballarat Broadcasters (3BA) Pty. Ltd., and BTW6.

LADIES' AUXILIARY

It has been mentioned previously in this report that there are nearly 1,000 elderly people in the care of the Queen Elizabeth Home and more than 400 staff are employed. Your Board is very conscious of the fact that such development can bring in its train a cold and impersonal attitude and destroy the personal atmosphere for which the Queen Elizabeth Home is well known.

The maintenance of the character of the Home has been greatly assisted by the activities of the members of the Ladies' Auxiliary in arranging bus trips, the Annual Picnic and the Christmas Tree. This is a most important function in the activities of the Home, and your Board records again its appreciation of the support given by the Ladies' Auxiliary.

SPECIAL ACTIVITIES AUXILIARY

The keen personal interest shown by members of the Auxiliary has been most encouraging to the members of your Board. On 10th June, 1965, an electrocardiograph was presented to the Home by Cr. A. E. Mills, Chairman of the Special Activities Auxiliary, as the first unit of equipment to be provided by the Auxiliary from monies raised for this purpose.

HOSPITALS AND CHARITIES COMMISSION

Your Board records its appreciation of the interest shown by the Chairman, Commissioners and Officers of the Hospitals and Charities Commission, and the consideration and financial assistance given to all projects raised.

PRESBYTERIAN FELLOWSHIP OF AUSTRALIA

Saturday, 10th July, 1965, was the occasion for the 40th year in succession that the combined branches of the Presbyterian Fellowship of Australia have provided the Annual High Tea and Concert for the residents of the Home.

On this occasion more than 100 young people took over the catering services of the Home and provided the tea for the residents as well as arranging a concert of outstanding quality.

The youth of today often come under criticism, and your Board takes this opportunity of recording its thanks to these young people of the Presbyterian Fellowship of Australia who have shown such interest in the aged people over so many years.

BRIM BRIM

Your Board records its appreciation of the services rendered by Mr. and Mrs. Ellis who retired from Brim Brim last December. Mr. and Mrs. Ellis were the first caretakers of this property and were responsible for the care of the residents and the improvements to the property, which have been commented upon so favourably by visitors. Mr. and Mrs. Ellis have been succeeded by Mr. and Mrs. Ken Unwin, and we are confident that Brim Brim, which is a valuable adjunct to the Queen Elizabeth Home, will continue to fill a most essential need.

FOOD SERVICE

As a topic of conversation the food service in any institution is almost on a par with the weather. This is no exception at the Queen Elizabeth Home where there are over 800 residents and more than 400 staff, and your Board records its appreciation of the work of the catering staff in maintaining an efficient service of such high standard.

RED CROSS

During the year Mrs. C. H. Clamp, who is the official Red Cross Visitor, left on an overseas tour and during her absence we were very pleased that Mrs. Buchanan acted in this capacity.

RELIGIOUS SERVICES

Your Board is indebted to our Chaplains for their faithful ministrations and the visiting clergy and lay workers who bring so much comfort to our residents.

STAFF

Your Board recognises that the smooth functioning of the Home is the result of staff interest and interdepartmental co-operation. It can be readily understood that there are many departments in the Home's organisation, some of which are well known to the public, but others, just as essential, working in the background. To each Departmental Head and to each individual employee the Board of Management says "Thank you" for work well done.

CONCLUSION

In conclusion reference is made to the number of visitors from overseas and interstate who come to the Queen Elizabeth Home for the purpose of studying the Home Care, Day Centre and Day Hospital Services, the accommodation provided in the Flats and Hostels, and the organisation of the Ambulant and Hospital Sections of the main building of the Home.

This circle of care is possibly unique and as mentioned previously, the Queen Elizabeth Home has the highest daily average in Victoria.

Nevertheless your Board continues to study the latest trends in relation to the care of the aged, and will continue to increase the services and facilities available to the aged and needy in keeping with the policies established by the Queen Elizabeth Home for more than 100 years.

On behalf of the Board,

JOHN L. TREVENEN,
President.

★ ★

BOARD OF MANAGEMENT ATTENDANCE RECORD, 1964-65

Number of Board Meetings — 11

CLAMP, C. H.	11	LONSDALE, J.	7
CUTTER, G. B.	9	MESSER, W.	Appointed 7/6/65
EYRES, C. N.	11	NICHOLSON, A. W.	5
FAULL, A. T.	8	RONALDSON, R. B.	10
FRASER, A. C.	10	SMALL, J. J.	10
HEINZ, W. H.	8	THOMAS, J. A.	10
HOBSON, P. S.	9	TORNEY, Geo.	10
KEITH, J.	Retired 21/6/65	TREVENEN, J. L.	11

THE QUEEN ELIZABETH HOME

* * *

COMMODITIES CONSUMED FOR THE YEAR 1964-65

Commodity	Consumption
MEATS	117,565 lbs.
BACON ..	3,084 lbs.
FISH	7,827 lbs.
MILK and CREAM ..	36,940 gals.
BUTTER	17,502 lbs.
COOKING MARGARINE and COOKING OIL ..	5,734 lbs.
EGGS ..	17,089 doz.
BREAD and BREAD ROLLS	120,678 lbs.
TEA	6,085 lbs.
VEGETABLES	214,438 lbs.
BRIQUETTES ..	2,280 tons
COKE ..	5 tons
GAS	3,196,400 cu. ft.
ELECTRIC LIGHT	595,095 k. watts
FUEL OIL	47 tons

MAINTENANCE ACCOUNT

STATEMENT OF INCOME AND EXPENDITURE

from 1st July, 1964, to 30th June, 1965

(Adjusted to nearest £)

1963/64	INCOME	1964/65
	Government Grants	
£101,388	Hospitals and Charities Fund	£118,698
12,976	Pharmaceutical Benefits	13,707
<u>£114,364</u>		<u>£132,405</u>
	Charitable Contributors	
2,194	Annual Subscriptions	3,361
169	Municipal Grants	204
100	Hospital Sunday	100
594	Other Collections and Donations — Cash and Kind	1,143
462	Legacies (Unconditional) in sums not exceed- ing £100	512
<u>3,519</u>		<u>5,320</u>
	Patient Fees on Payment of A/c of Patients	
27,856	Infirmary	27,939
173,280	Commonwealth Nursing Home Benefit	177,850
3,747	Ambulatory including Day Hospital	4,620
117,514	Pensioner Income	130,148
31,040	Mental Patients	31,603
<u>353,437</u>		<u>372,160</u>
181	Income from Investments	196
	Miscellaneous	
1,704	Sale of Produce, Stores and Refuse	2,004
375	Rents and Interest	404
<u>2,079</u>	Percy Baxter Flats Rent	3,372
		<u>5,780</u>
473,580	Total General Income	515,861
-	Deficiency for Financial Period (Transferred to the Debit of Maintenance Fund A/c)	2,066
<u>£473,580</u>		<u>£517,927</u>
	EXPENDITURE	
£53,808	Provisions	£59,052
14,533	Surgery and Dispensary	15,075
36,097	Domestic	35,441
322,866	Salaries and Wages	375,989
9,927	Miscellaneous and Administrative	9,461
<u>£427,231</u>	Service Cost	<u>£495,018</u>
28,084	Establishment Charges	11,777
1,033	Finance	1,268
<u>466,348</u>	Total Cost	<u>508,063</u>
	Extra-Ordinary Expenditure	
5,064	Regional Dental Service	5,110
-	Works Study Consultants	4,587
-	Physiotherapy Bursary	167
		<u>9,864</u>
471,412	Total General Expenditure	517,927
2,168	Surplus for Financial Period (Transferred to Credit of Maintenance Fund A/c)	-
<u>£473,580</u>		<u>£517,927</u>

MAINTENANCE FUND ACCOUNT

1963/64	INCOME	1964/65
£46,716	Balance Beginning of Period	£52,966
-	Transfers — Percy Baxter Flats Maintenance Fund	27
-	Transfers — Percy Baxter Flats Repairs and Replacements Reserve	650
		£53,643
2,168	Surplus Financial Period	-
4,001	Capital Fund Account	-
592	Repair and Replacements Reserve	-
-	Govt. Grant Mental (Adjustment 1964)	4,811
£53,477		£58,454
EXPENDITURE		
£50	Patient Fees Written Off Past Years	-
461	Govt. Grant Pharmaceutical Benefits (Over-claimed 1960/61)	-
-	Deficit Financial Period	£2,066
52,966	Balance at end of Period	56,388
£53,477		£58,454



MAINTENANCE COSTING STATEMENT

FINANCIAL YEAR, 1st JULY, 1964, to 30th JUNE, 1965

DAILY AVERAGE OCCUPIED BEDS FOR THE YEAR — 751.5

TOTAL IN-PATIENTS TREATED — 1,138

Headings of Expenditure	Cost	Average Cost per Bed for Daily Average In-Patients	
Provisions	£59,052	£78.6	Average Cost per Day (In-Patients) 37/-
Surgery and Dispensary	15,075	20.0	
Domestic	35,441	47.2	
Salaries and Wages	375,989	500.3	
Miscellaneous and Administration	9,461	12.6	
Service Cost	495,018	658.7	Average Cost per In-Patient Treated £446.5
Establishment	11,777	15.6	
Finance	1,268	1.7	
Total Cost	508,063	676.0	
Extraordinary	9,864		
GRAND TOTAL	£517,927		

COMPARATIVE STATEMENT

(Adjusted to nearest £)

INCOME —	1961	1962	1963	1964	1965
Government Grant	£128,629	£159,609	£128,487	£114,364	£132,405
Charitable Contributions	5,231	5,531	4,751	3,519	5,320
Patients Fees	235,475	255,509	334,470	353,437	372,160
Income from Investments	209	155	165	181	196
Miscellaneous	1,696	1,910	1,924	2,079	5,780
TOTAL ORDINARY INCOME	371,240	422,714	469,797	473,580	515,861
Deficiency	547	—	—	—	2,066
GRAND TOTAL	£371,767	£422,714	£469,797	£473,580	£517,927

EXPENDITURE —	1961	1962	1963	1964	1965
Provisions	47,210	51,029	51,601	53,808	59,052
Surgery and Dispensary	10,386	11,431	12,167	14,533	15,075
Domestic	34,729	34,670	37,580	36,097	35,441
Salaries and Wages	248,327	284,949	297,804	322,866	375,989
Miscellaneous and Administration	8,646	7,887	8,912	9,927	9,461
Establishment	20,885	28,844	39,984	28,084	11,777
Finance	1,584	1,566	1,183	1,033	1,268
TOTAL COST	371,767	420,376	449,231	466,348	508,063
Physiotherapy Bursary	—	—	—	—	167
Extra-Ordinary (Regional Dental Service)	—	1,512	5,031	5,064	5,110
Works Study	—	—	—	—	4,587
TOTAL EXPENDITURE	371,767	421,888	454,262	471,412	517,927
Surplus	—	826	15,535	2,168	—
GRAND TOTAL	£371,767	£422,714	£469,797	£473,580	£517,927

STATISTICAL —	1961	1962	1963	1964	1965
Daily Average Patients	652.2	708.2	716.9	731.9	751.5
Daily Average Day Hospital Patients	—	—	—	—	14
Number of Paid Staff	354	376	396	425	425
Total Number of Inmates accommodated during period	968	995	1,031	1,091	11,138
Number of Beds Available	708	728	735	762	770
Percy Baxter Flats Accommodation	—	—	26	26	40
Eyres Flats	—	—	—	4	4

COSTS —	1961	1962	1963	1964	1965
Average Cost per Day per Resident	31/3	32/6	34/4	34/10	37/—
Average Yearly Cost per Bed per Daily Average Resident	£570.0	£593.5	£626.6	£637.1	£676.0
Average Daily Cost per Resident Treated	£404-16-0	£422-5-0	£435-7-0	£432-2-0	£466-10-0

FINANCIAL —	Overdraft	Overdraft	Credit	Credit	Credit
Maintenance Bank	£7,585	£14,804	£21,374	£14,611	£26,621
Endowment	3,250	3,250	3,250	3,250	3,250
Building and Equipment Fund	115,674	107,978	103,788	147,983	136,871
Maintenance Fund	30,996	31,181	46,717	52,966	56,388
Capital Bank	231	1,432	20	11,984	2,927

RESERVE ACCOUNT

To Capital Fund	£3,797	By Legacies, Donations	£7,317
.. Special Purposes Account	3,520	.. Income from Investments	30
.. Transfer of Income to Maintenance Account	30		
	£7,347		£7,347

BUILDING AND EQUIPMENT ACCOUNTS (Summary)

To Capital Funds	£68,095	By Balance, 1st July, 1964	£147,983
.. Patients Comforts (Special Purposes)	850	.. Commonwealth Grants	22,368
.. Balance, 30th June, 1965	136,871	.. Donations (Specific)	7,415
		.. Interest	6,265
		.. Transfer Special Purposes	10,765
		.. Transfer Reserve Account	3,520
		.. Transfer Patients Trust	3,800
		Deposits — re Eyres Flats	3,700
	£205,816		£205,816

CAPITAL FUND ACCOUNT

To Furniture and Equipment (Sale of Asset)	£13	By Balance, 1st July, 1964,	£1,222,228
.. Balance, 30th June, 1965	1,322,791	.. Receipt	100,560
	£1,322,804	.. Furniture and Equipment (Soft)	16
			£1,322,804

CAPITAL BANK ACCOUNT (Summary)

To Commonwealth Grant	£977	By Balance, 1st July, 1964	£11,984
.. Government Grant	25,167	.. New Buildings	57,106
.. Donations (Specific)	1,568	.. Additions and Major Alterations	11,134
Transfer from Building and Equipment Accounts	68,095	Plant, Machinery, Furniture and Equipment	17,410
To Patients' Trust (Kiosk Profits)	943	Balance, 30th June, 1965	2,926
.. Reserve Account	3,797		
.. Sale of Assets	13		
	£100,560		£100,560

MUNICIPAL GRANTS

SHIRE OF ARARAT	£5 0 0
CITY OF BALLAARAT	125 0 0
SHIRE OF BALLARAT	5 0 0
SHIRE OF BALLAN	20 0 0
SHIRE OF BUNGAREE	10 0 0
SHIRE OF BUNINYONG	10 0 0
CITY OF COLAC	3 3 0
SHIRE OF COLAC	2 0 0
SHIRE OF CLUNES	2 0 0
SHIRE OF CRESWICK	3 3 0
SHIRE OF LEIGH	5 5 0
CITY OF PORTLAND	5 0 0
BOROUGH OF SEBASTOPOL	3 3 0
SHIRE OF TALBOT	5 0 0

QUEEN ELIZABETH

BALANCE SHEET AS AT

1963/64	LIABILITIES	1964/65	
			<u>MAINTENANCE</u>
£10,613	Creditors	£13,808	}
5,470	Accrued Expenses	7,436	
31	Advance Income	-	
70	Deposit on Tenders	70	
296	Trust Clearing Account	932	
53,643	Balance Accumulated Surplus	56,388	
£70,123		£78,634	
			<u>ENDOWMENT</u>
3,250	Balance	3,250	
			<u>SPECIFIC PURPOSES</u>
£77,104	Patient Trust	£80,319	
300	Government Trust Fund	309	
159,914	Other Funds	136,562	
237,318		217,190	
			<u>CAPITAL FUNDS</u>
£11,983	Bank Overdraft	-	}
1,222,228	Creditors	£3,562	
1,234,211	Balance	1,322,791	
£1,544,902		1,326,353	
		£1,625,427	

SECRETARY'S DECLARATION

I solemnly and sincerely declare that the various statements of account are true and correct, and I make this solemn declaration conscientiously believing same to be true, and by virtue of the provisions of an act of Parliament rendering persons making a false declaration punishable for wilful and corrupt perjury.

F. G. BLACK.

9th August, 1965.

Manager.

BETH HOME

AT 30th JUNE, 1965

	1963/64	ASSETS	1964/65
CE FUND			
£145		Cash in Hand	£130
25,901		Cash at Bank — Maintenance	26,621
296		Cash at Bank — Trust Clearing	932
3,583		Patient A/c Debtors	4,820
20,455		Accrued Income	25,131
241		Prepaid Expenses	294
17,119		Stores	18,847
482		Livestock	495
1,901		Debtors (others)	1,364
	£70,123		£78,634
NT FUND			
	3,250	Investments	3,250
POSE FUND			
£38,108		Cash at Banks	£31,192
199,210		Investments	185,998
	237,318		217,190
FUND			
£977,339		Cash at Bank	£2,926
256,872		Land and Buildings	1,046,462
	1,234,211	Plant and Equipment	276,965
	£1,544,902		1,326,353
			£1,625,427

AUDITOR'S REPORT

We hereby report that we have audited the books, vouchers and documents of the Institution, and find that the postings are accurately made under their proper headings, and that the Statement of Accounts including the Balance Sheet are correct. We have inspected the securities and insurance policies, and obtained Bankers' Certificates with respect to the balances represented by the Assets in the various Statements of Accounts and found them in order.

G. A. GILLBERT, F.C.A.,

I. McIVOR, F.C.A.,

Auditors.

5th August, 1965.

QUEEN ELIZABETH HOME

BALANCE SHEET AS AT 30th JUNE, 1965

1963/64	LIABILITIES	1964/65	1963/64	ASSETS	1964/65
MAINTENANCE FUND					
£10,613	Creditors	£13,808	£145	Cash in Hand	£130
5,470	Accrued Expenses	7,436	25,901	Cash at Bank — Maintenance	26,621
31	Advance Income	—	296	Cash at Bank — Trust Clearing	932
70	Deposit on Tenders	70	3,583	Patient A/c Debtors	4,820
296	Trust Clearing Account	932	20,455	Accrued Income	25,131
53,643	Balance Accumulated Surplus	56,388	241	Prepaid Expenses	294
			17,119	Stores	18,847
			482	Livestock	495
			1,901	Debtors (others)	1,364
£70,123		£78,634	£70,123		£78,634
ENDOWMENT FUND					
3,250	Balance	3,250	3,250	Investments	3,250
SPECIFIC PURPOSE FUND					
£77,104	Patient Trust	£80,319	£38,108	Cash at Banks	£31,192
300	Government Trust Fund	309	199,210	Investments	185,998
159,914	Other Funds	136,562			
237,318		217,190	237,318		217,190
CAPITAL FUND					
£11,983	Bank Overdraft	—	—	Cash at Bank	£2,926
1,222,228	Creditors	£3,562	£977,339	Land and Buildings	1,046,462
	Balance	1,322,791	256,872	Plant and Equipment	276,965
1,234,211		1,326,353	1,234,211		1,326,353
£1,544,902		£1,625,427	£1,544,902		£1,625,427

SECRETARY'S DECLARATION

I solemnly and sincerely declare that the various statements of account are true and correct, and I make this solemn declaration conscientiously believing same to be true, and by virtue of the provisions of an act of Parliament rendering persons making a false declaration punishable for wilful and corrupt perjury.

F. G. BLACK.

Manager.

9th August, 1965.

AUDITOR'S REPORT

We hereby report that we have audited the books, vouchers and documents of the Institution, and find that the postings are accurately made under their proper headings, and that the Statement of Accounts including the Balance Sheet are correct. We have inspected the securities and insurance policies, and obtained Bankers' Certificates with respect to the balances represented by the Assets in the various Statements of Accounts and found them in order.

G. A. GILLBERT, F.C.A.,

I. McIVOR, F.C.A.,

Auditors.

5th August, 1965.

LIFE GOVERNORS

Adair, Mrs. E.	Foley, W. G.	Lean, Mrs. B.	Rowe, Mrs. Matilda
Ainley, M.	Forbas, W. D.	Leonard, T.	Rowe, R. A.
Allan, J. V.	Ford, Mrs. E. G.	Lidgett, H.	Rowe, R. J. A.
Andrewartha, J.	Foulkes, R.	Lindsay, Ross	Rumler, C.
Atkins, Mrs. Linda	Foulkes, Cr. W. C.	Lockhart, A. J.	Rutherford, Miss M.
Austin, Mrs. Ethel	Foy, Mrs. R.	Lockhart, Mrs. R.	Rutledge, T. F.
Bagley, K. B.	Foyster, A. J.	Lockhart, Miss A.	Ryan, M. J.
Bailey, Miss Claire	Francis, Mrs. I.	Lockhart, W. F.	Sampson, W. E.
Bailey, L. H.	Fraser, A. C.	Ludbrook, R.	Sampson, Mrs. W.
Bailey, W.	Fraser, Mrs. Nellie	Lynch, Mrs. K. M.	Sanderson, Mrs. L.
Baker, Mrs. E.	Fry, T. G.	Mackay, Mrs. Agnes	Savage, E.
Baker, G. H.	Furlong, T.	Mackay, Keith, M.B.E.	Scott, G. L., M.L.A.
Barlow, Mrs. H.	Gange, Mrs. Margaret	Magee, A.	Seabrook, G.
Baxter, Mrs. Hilda G.	Gangell, R.	Malara, Mrs. R.	Sedgwick, L.
Beacham, F.	Gardiner, D. H.	Manly, W. G.	Segrott, C. B.
Beggs, S. J.	Garrett, R.	Martin, A. C.	Semmens, E. J.
Bell, R. P.	Gelder, C.	Martin, Mrs. W. T.	Shepherd, F. V.
Bennett, A. J.	Gibb, Mrs. M.	Matthews, Mrs. H. M.	Shuttleworth, Geo.
Benson, Miss Muriel	George, Miss Marion	Maxwell, J.	Simpson, Robert H.
Bird, Miss Bessie	Gilbert, G. J.	Maxwell, J. Y. C.	Sloss, Dr. W. A., M.B.E.
Black, Mrs. Jean	Giles, Mrs. M. E.	Mee, Arthur W.	Sloss, Mrs. B.
Blackmore, C. W.	Glaciman, Walter H.	Michell, V.	Smith, Edwin
Blair, Clifford	Glass, H.	Miller, P. J. R.	Smith, H.
Borch, W. R.	Gordon, G. C.	Miller, W. H.	Smith, W. G.
Borella, Miss P.	Gordon, Mrs. M. N.	Mills, A. E.	Snell, C. T.
Bosher, C.	Graham, I.	Mills, Mrs. C. M.	Soulsby, Miss M.
Bourne, A. S.	Greenhill, T. J. C.	Moar, D. H.	Speedie, Miss J.
Brann, Mrs. H.	Gribble, M.	Mong, Mrs. A.	Spencer, A. L.
Brett, R. C.	Gude, Miss Alice	Mong, W.	Spittle, A.
Brown, C. E.	Guy, Alan	Monteith, Miss J.	Spewart, Mrs. A.
Bryant, Mrs. Ethel	Haddon, W.	Morison, Mrs. E.	Spittle, W.
Buchanan, Mrs. S.	Hall, Mrs. Georgina	Morris, E. A.	Stapp, John
Bullock, A. B.	Hallawall, Mrs. C.	Morris, T. A.	Steele, W.
Burke, Alex D.	Halls, Miss G. Mandeville	Morris, W.	Stevens, Mrs. J.
Carbury, E.	Hamilton, K. L.	Morrow, H. B.	Stevens, J. K.
Carter, J.	Hammer, G. H.	Morton, E.	Stevenson, Mrs. Flora
Casley, J.	Handley, W. T.	McAdie, Miss A.	Stewart, W. J.
Catherall, Mrs. V. M.	Harris, Miss Betty	McConchie, Ivan R.	Stewart, Mrs. W. J.
Chalmers, K.	Harris, O. R. D.	McConville, Mrs. M.	Stewart, W. R.
Chambers, T.	Hartwick, H.	McDonald, L. W.	Storer, J. R.
Chatham, J.	Hartwick, Mrs. H.	McDonald, Stuart M.	Stourgaard, Mrs. H.
Chisholm, J. A.	Harvey, Norman	McDowall, Mrs. W.	Stowe, Mrs. Edna
Christophersen, F. A.	Hatch, Hedley	McGregor, I. W.	Sullivan, D.
Clark, A.	Haugh, J.	McGregor, R. G.	Surridge, Thelma
Clark, Mrs. Margaret	Hayden, B. E.	McIntosh, Mrs. E. J.	Tantau, W. R.
Clark, Mrs. Mary	Heathershaw, R. S.	McLean, A. A.	Tassell, C. T.
Clarke, R. Turner	Hebbard, W. A.	McLean, A.	Taylor, C. T. C.
Clark, Kenneth	Herman, F. G.	McAnamy, T.	Templeton, Miss G.
Clayton, K.	Hillman, W. J.	McPherson, Miss L.	Thomas, Miss M.
Condon, Mrs. C.	Hollway, Mrs. E. A.	Najim, W.	Thomson, G. A.
Cook, B. E.	Holmes, Mrs. Violet	Nicholson, Arthur W., O.B.E.	Thorne, Mrs. Annie
Cook, Mrs. I. M.	Hooper, Mrs. R.	Nimon, Norman A.	Tippett, E. J.
Corner, Mrs. L. G.	Hopkinson, G.	North, L. J.	Tobin, Noel
Courtney, Mr. M. E.	Horvath, Imre	North, W. J. C.	Todd, E. H.
Coxall, D. L.	Howard, S. C.	Oldham, Lindsay	Todd, Rex J.
Coxall, Mrs. D. L.	Hucker, Mrs. Mary	Oliver, F. W.	Torney, Geo.
Crawford, A. C.	Hughes, A.	O'Loughlin, Mrs. M.	Torney, Mrs. Mary
Crawford, John	Hughes, Arthur	O'Malley, R.	Torney, R.
Crocker, Peter E.	Hughes, T.	Pearson, Earl G.	Trevenen, John L.
Crouch, N. A.	Hyde, Roy	Patch, F. N. M.	Trigg, Meyer
Cummins, Miss Marie	Jackson, R. W.	Petrie, N. W.	Valpied, W.
Cutter, G. B.	Jenkins, W., Snr.	Podger, Stanley C.	Vendy, Miss Marlene
Dale, Allan	Jerram, R. G.	Powell, E. J.	Volk, Allan
D'Arcy, J. B.	John, Mrs. E.	Pratt, D. L.	Wain, David
Davey, J. H., O.B.E.	Johns, J. C.	Proven, W. A.	Walker, A. J. R.
Davies, John G.	Jolly, J. H.	Rainbow, R.	Walker, A.
Davis, Alfred	Jones, H. F.	Raworth, A. G.	Walker, C. J. B.
Davis, Charles H.	Jones, Stan	Reading, Mrs. Elsie	Wallace, Dr. F. H.
Dawson, E. E.	Keith, J.	Redfearn, Mrs. E.	Wallace, J. N.
Dayman, I. H.	Keith, Mrs. J.	Reed, Mr. N.	Wallace, R. V.
Dellar, C. E.	Kellam, E. A.	Rehlfisch, Mrs. H.	Walsh, Mrs. Ella
Dickins, S. E. Pty. Ltd.	Kelsall, A. G.	Reid, A.	Weidlich, Mrs. A. C.
Dixon, Mrs. B.	Kemp, Mrs. May	Reynolds, H. V.	Wells, W. G.
Dodgshun, Keith	Kennedy, H. O'C.	Reynolds, R.	Welsh, Wm.
Donovan, F. W.	Kennedy, L.	Richards, A. H.	Westcott, C. W.
Drew, M. G.	Kenwright, Mrs. A.	Richards, G. S.	Whitcher, D. H.
Dugdale, Mervyn	Kilgour, A. N.	Richards, Mrs. Elaine	Whitcher, J. M.
Dunn, Leslie C.	Kilbour, Mrs. G.	Richardson, Mrs. E.	White, Fanny L.
Dunstan, J. F.	King, Miss Marlene	Rizzoli, A. C.	Whiting, Mrs. Mima
Dunstan, W.	King, W.	Robertson, J. V.	Whiting, Maxwell
Duxon, E. J.	Kopke, J.	Robinson, Mrs. Ivy	Whykes, E. J.
Edmonds, E. C.	Lancaster, Mrs. Caroline	Robinson, R.	Williams, A. A.
Eldridge, Eric G.	Lancaster, John W.	Rodda, R.	Williams, Mrs. T.
Elliott, Miss Dorothy	Lane, K. S.	Roff, W. E., C.B.E.	Wilson, Dr. S. A.
Elliott, Edward A.	Larkens, Percy	Rollan, Miss Madeleine	Wood, Oliver
Ferguson, Mrs. E. J.	Lawn, Mrs. Edith	Ronaldson, R. B.	Worrall, Joan
Ferguson, J. T.	Lawrence, E.	Rosendale, Mrs. I.	Wright, Elizabeth
Flecknoe, A. E.	Lea, Mrs. Ida	Ross, A.	Young, John M.
Fletcher Jones Organisation	Lean, A.	Roughton, Mrs. Eva	
Flohm, Miss Leah		Rowe, David T.	

LIST OF CONTRIBUTORS

Abraham, I. Pty. Ltd., £1/1/0; Adair, Mrs. Edith, £2; Adams, Herbert Pty. Ltd., £3/3/0; Adams, Geo. (Estate late), £100; Aitken, P. A., £1; Alexander, Dr. D. A., £2/2/0; Alex King & Sons, £1/1/0; Allen Bros., £1/1/0; Allan, A., £1/1/0; Allan, Misses A. & I., £3; Allison, R., £1; Amoco Service Station, £1; Ampol Petroleum Pty. Ltd., £5; Andrews, Max, £1/1/0; Angow, N., £1; Anonymous, (A. Aikins), £50; Anonymous, Collection Box, £2/9/9; Anonymous, £5/5/0; Anonymous, L. G. S., £10; Anonymous, W. M., £5; Armstrong, Mrs. C., £2; Arthur Brunt Pty. Ltd., £2/2/0; Ashkar, Mrs. V. A., £1/1/0; Ashley, W. W., £1/1/0; Athletic Club Hotel Social Club, £1/7/6; Atkins, Mrs. L., £10; Auchettl, E., £1; Austin, T. L., £1; Australian Exhibition Committee, £2/2/0.

Bacchus Marsh Dairymen's Co-op., £1; Bailey, Mrs. W., £2/2/0; Baker, Miss E., £1; Baker, G. H., £1/1/0; Ball, Misses E. L. & A., £3; Ball, F. L., £5; Ball, J. & M. S., £2/2/0; Ballan C.W.A. Younger Set, £1/1/0; Ballarat A. & P. Society, £2/2/0; Ballarat Associated Fibrous Plaster Pty. Ltd., £5; Ballarat Branch C.W.A., £1/1/0; Ballarat Brewing Co., £5/5/0; Ballarat Broadcasters (3 BA) Pty. Ltd., £25; Ballarat Building Suppliers, £2/2/0; Ballarat Cake Kitchen, £1; Ballarat Cleaning Service, £3/3/0; Ballarat Courier Pty. Ltd., £2/2/0; Ballarat Deep Freeze Co. Pty. Ltd., £5/5/0; Ballarat Florette, £2/2/0; Ballarat Jaycettes, £1/1/0; Ballarat High School Social Service League, £10; Ballarat Land Mortgage Co. Ltd., £1/1/0; Ballarat Light Opera Co. Pty. Ltd., £50; Ballarat Metal Co. Pty. Ltd., £1/1/0; Ballarat Modern Dairy Pty. Ltd., £1/1/0; Ballarat North Technical School Social Service League, £15/15/0; Ballarat Polocrosse Club, £3/3/0; Ballarat Steam Laundry Pty. Ltd., £2/2/0; Ballarat Tanning Co., £1; Ballarat Theatres Ltd., Regent Theatre, £2; Ballarat T.V. & Electrical, £1; Ballarat Woollen & Worsted Co. Ltd., £5/5/0; Ballarat & Western T.V. Ltd., Vic., £15; Ballarat East High School Social Services Club, £15; Ballarat Courier Social Club, £1/1/0; Barlow, Mr. and Mrs., £2/2/0; Barnes, F. W. & Son, £20; Barnett, H. Pty. Ltd., £2/2/0; Barr, Mrs. A. E., £1; Barr, D. K., £2/2/0; Barr, H., £1; Barr, R. C., £1; Barrell, K. F., £1/1/0; Barrett, W. & Sons, £1; Barry, Mrs. Frank J., £4/4/0; Barrow, Edgar Pty. Ltd., £1/1/0; Barutta, A. J., £1; Barwick, T. E., £10/10/0; Bastin, J. N., £1; Bastin, Mrs. N. E., £5/5/0; Batchelder, L., £1/1/0; Batters, C. A., £1; Batters, N. W., £1; Bawden, W. & E., £1; Baxter, Mrs., £5; Baxter & Stubbs, £1/1/0; Bavly, S. W., £1/10/0; Baxter, Mrs., £4; Beacham, F. A., £1/1/0; Beanland, M. & Son, £2/2/0; Beauffort Timber Co., £2/2/0; Beaurepaire Tyre Service Pty. Ltd., £3/3/0; Bedgood, E. G., £2/2/0; Begonia City Hotel-Motel, £1; Bell & Shorten, £1/1/0; Benjamin, M. G. & Co., £1/1/0; Benn, Mrs. R. G., £1/1/0; Bennett, Miss Elizabeth I., £10; Benoit, R., £1/1/0; Berlund, E. G., £1; Berlyn, I. & Son, £1/1/0;

Berry Anderson & Co., £1/1/0; Besemer, J. C., £2/2/0; Bingley, J. D. & D. R., £2/2/0; Bingley, T. J., £5/5/0; Bird, G., £1; Bird, Miss Bessie, £5; Birkett, G., £1; Black, F. G., £1/1/0; Black Hill State School Social Services League, £1/1/0; Blair, Miss J., £2/2/0; Blight, J. R. & Son, £5/5/0; Boadle, L. H. & Sons, £5/5/0; Bogner, J. & A., £1/1/0; Booth, K., £10; Borbridge, Thomas G., £1; Borlase, Miss H. D., £1/1/0; Boustead, A. C. & Son, £1/1/0; Bracks, Roy, £1/1/0; Bradley & Cockburn, £1/1/0; Brann, Mrs. Hilda, £25; Brann, Mrs. Hilda, £50; Broidy, K. J., £1; Brennan, D., £1; Brennan, D. J., £1; Brett, R. C., £50; Britter, Harrv, £5; Brogden Bros. Pty. Ltd., £1/1/0; Brolite Pty. Ltd., £2/2/0; Bromley, H. J. & M. & Son, £1; Brophy, Polcy & Co., £2/2/0; Bullfrog, £2/2/0; Bridges, W. G. & Co., £1/1/4; Brooks, G., £1; Bennett, J. F., £1/1/0; Baker, Miss E., £1; Brown, H. & Son, £1/1/0; Browns Confectionery Pty. Ltd., £2/2/0; Brown, G. W., £1; Brown, H. V. & Son, £5; Brown, Ian, £5; Brown, J. H. & Son Pty. Ltd., £1/1/0; Brown, Ronald, £1/1/0; Brown, W., £2; Browning, F., £1/1/0; Browning, T., £1; Bruty, Mrs. W., £1; Bryant & Gourley, £1/1/0; Bryant, J. F., £2/2/0; Bryant, R. G., £3/3/0; Bryce, Robert & Co. Ltd., £1/1/0; BTV 6 Social Club, £1/1/0; Bugge, Mr. L., £1; Bullus, £5; Burge, Y. M. & W. G., £1; Burke, A. D., £2/2/0; Burrumbeet & Windermere Farmers Co-op. Society, £1/1/0; Burt, Frank, £1; Burton, Roy & Co. Pty. Ltd., £2/2/0; Bush, Miss L., £5; Bustard, J. & Son, £1/1/0; Butler, J. J., £1/1/0; Butterfield, V., £1; Byrne, J. D., £1/1/0; Byrne, Jones & Torney, £1/1/0; Byrne, Hon. Murray M.L.C., £2/2/0.

Cadbury Fry, Pascall Pty. Ltd., £1/1/0; Caddy & Kerr, £1/1/0; Cameron, D. E., £1; Cameron, J. B. & Co., £1/1/0; Cameron, Mrs. W. E., £1/1/0; Cameron, W. F., £1/1/0; Campbell, A., £2/2/0; Cantwell, W. J., £1; Captain Distributing Co. Pty. Ltd., £2/2/0; Capuano, Mrs. J., £1; Cameron, J., £1; Carbury, N., £1; Carmon, Alfred, £30; Carroll, Mrs., £1; Carthew, F., £1/1/0; Casley, J. M., £50; Castlemaine Bacon Co. Pty. Ltd., £1/1/0; Cato, F. R. & R. A. Jelbart, £2/2/0; Central Joinery & Building Suppliers, £1/1/0; Chambers, G. & W., £2/2/0; Charles, Mrs. A. O., £2; Charles, G. R., £1/1/0; Charles, Mrs. H. C., £2; Charles, Mrs. J. L., £1/1/0; Charles, Mrs. M. Z., £1/1/0; Chatham, J. & Co., £3/3/0; Chatham, P., £1; Cheetham Salt Ltd., £2; Christensen, J., £1; Clamp, C. H., £5/5/0; Clarendon Presbyterian Ladies' College Social Service, £3/5/0; Clark, Cr. A., £2/2/0; Clarke, A. D. Pty. Ltd., £5/5/0; Clarke, Miss I. N., £2/2/0; Clarke, J. A., £3; Clarke, J. C., £1; Clarkson, Eric W., £1; Clifford, T. C., £1; Coad, Mrs. M. C., £1; Coats Patons (Aust.) Ltd., £5/5/0; Coburn & Associates, £2/2/0; Cochran, E. B., £1/1/0; Cochran, W. L., £1/1/0; Cody, M. E. & M., £1/1/0; Coghlan, C. C., £1/1/0; Coliseum Motors Pty. Ltd., £2/2/0; Collings, C., £1; Collings, F., £1; Collins, A. H. Pty. Ltd.,

LIST OF CONTRIBUTORS — Continued

£2/2/0; Collins, E. Motors, £1/1/0; Collins, Mrs. H. J., £1/1/0; Colman, W. F. Housing & Timber Co. Pty. Ltd., £1/1/0; Commercial Travellers Association, £5; Conaughton, J. P. & Co., £1/1/0; Conroy, Mrs. E., £1/1/0; Cooke, J. N., Foley & Co., £1/1/0; Cooke, J. H., £2; Cooks Private Hotel, £1; Corbett, Hugh, & G. L. Scott Pty. Ltd., £1/1/0; Cornell, Miss, £5; Cornell, Walter, £1/1/0; Coronet Caravans, £1/1/0; Coulson, E., £1/11/6; Coutts, T. J. Pty. Ltd., £3/3/0; Coutts, Mrs. W., £1/1/0; Cowan, H., £1; Cowleys Eureka Iron Works Pty. Ltd., £2/2/0; Cox, Mrs. D., £1; Coxall, A. B., £2; Coxall, D. L., £1/1/0; Crabbe, Martha (late) Estate, £3/3/0; Craig's Royal Hotel, £5; Cramer, J. C., £1/1/0; Cripps & Deveson, £1/1/0; Crisp Messrs., & Sons, £1/1/0; Critchion Hotel, £1/1/0; Crocker, George Pty. Ltd., £1/1/0; Cross, E. P., £1/1/0; Crouch, E. K., £2/2/0; Crouch, F. & Son, £1/1/0; Crouch, Mrs. F., £1; Crouh, N. A., £1/1/0; Cumming, Mrs. A., £2/2/0; Curwen-Walker, J., £1/1/0; Cutbush, G. C. & Co., £1; Cuthbert, Morrow, Must & Shaw, £2/2/0; Cutter, G. B., & D. H. Gardiner, £2/2/0; Cutter, G. B., £2/2/0; Cooke, J., £3/3/0; Coles, G. J. & Co. Ltd., £2; Coghlan, Mrs. N., £2; Cummings, H. D., £1.

Dale, M. D., £1/1/0; Dale, Peter, £1/1/0; Dalgety & New Zealand Loan Ltd., £1/1/0; Daly, H. A., £1; Darling Smith Pty. Ltd., £2/2/0; Davey, Jas. H., £1/1/0; Davidson, Dr. G. R., B. A. Baker, & K. J. Neerhut, £2/2/0; Davies, Dr. E. E., S. Giddy, & F. J. Morgan, £1/1/0; Davies, F. T. & Sons Pty. Ltd., £2/2/0; Davis, H. A. Motors, £1/1/0; Dawson, E. E., £2; Day, E. E. & Son Pty. Ltd., £1/1/0; Dehnert, C. A., £2/2/0; Dehnert, R., £1/1/0; Dehnert, W. A., £3; Dellaea, J. A. & A. E. Leviston, £1/1/0; Demunck, C. & J., £1; Deuteher, H. F. & Son, £2/2/0; Dickins, S. E. Social Services Fund, £25; Disney-Larson, Dr. D., £1/1/0; Ditchfield, C., £1/1/0; Doepel, Lilley & Taylor, £1/1/0; Dolan, Robert, £2/2/0; Donovan, J., £1; Doodt, Norm & Son, £2/2/0; Dooley, W. J., £1; Downey Flake Food Corporation Pty. Ltd., £2/2/0; Dridan, J., £1; Dridan, R., £1/1/0; Driscoll, Melvor & Co., £2/2/0; Drury, H. D., £1/1/0; Dougherty & Wilson, £1; Dunn, Mr., £1; Dunne, Mr., £1; Durant, W., £2/2/0; Dunn, R. W., £2/2/0; Dyer, Ray G., £2; Dyer, J., £2/2/0; Drug Houses of Aust., £10.

Edwards, J., £1; Edmontson, D. C., £1/1/0; Edwards, C. D., £1; Edmonds, Mrs. E. C., £10; Eclipse Motors Pty. Ltd., £2/2/0; Eckts Drapery Store, £3/3/0; Eckersley, J., £1; Eastern Joinery Works, £1/1/0; Eastern Station Hotel, £1; Eddington, F. H. & D. I., £2/2/0; Elliott & Magill Pty. Ltd., £2/2/0; Ellis, Mr. & Mrs. A., £1/1/0; Ellis, Keith & Son, £1/1/0; Ennis, W., £1/1/0; Erwin, Hon. G. D., M.H.R., £2/2/0; Erwin, S. T., £1/1/0; Esso Standard Oil (Aust.) Ltd., £5; Eureka Dry Cleaners, £1/1/0; Eureka Timber Co. Pty. Ltd., £2/2/0; Eva, L., £1/1/0; Evans

& Metcalfe, £1/1/0; Evans, H. & Son Pty. Ltd., £10/10/0; Evans, T. C., M.L.A., £5/5/0; Everett, F. N., £1; Everett, J. F., £1; Ewins, J. & Sons Pty. Ltd., £1/0/0; Exchange Hotel, £1/1/0; Eyres, C. N., £2/2/0; Ezywalkin Pty. Ltd., £1/1/0; Egan, J. F., £1.

Fagg, I. G., £1; Fagg, J. B., £1/1/0; Fagg, T. A. & Sons, £1/15/0; Fahey, Mrs., £7; Fairbairn, L. A. & Co., £1; Fargher & Roff, £1/1/0; Farmer, Mrs. H., £1/1/0; Farquarson, I., £2/2/0; Fauls Shoe Store, £3/3/0; Feary, W. G. & Sons, £2/2/0; Feltham, J. & Sons, £2/2/0; Feltham, J. & Son, £1/1/0; Fenwick, F. J., £1/1/0; Feild, F., £6; Finch, J., £1; Findlay, A. R., £1; Findlay, J., £1; Fitzmaurice, N., £1; Fitzpatrick, M., £5; Fitzpatrick, T. C., E. V., & C. J., £1/1/0; Flavell's Glanfield Pty. Ltd., £3/3/0; Fletcher Jones & Staff Pty. Ltd., £40; Fletcher, R. & Sons, £1/1/0; Flohm, L., £1/1/0; Flynn, J. M. Estate, £1/1/0; Foley, Brian, £5/5/0; Forbes, A., £1; Ford, Mrs. A. E., £5; Ford, Mr. F. & Mrs. E., £1/1/0; Francis, E. A., £5/5/0; Fraser, D., £1; Fraser, John & Son, £1/10/0; Fraser, Mrs. J. N., £2; Frawley, B., £1; Fiskin, A. C. & Son, £5/5/0; Fagg, R. T., £5/5/0.

Gallagher, M., £1; Gallagher, O., £1/1/0; Garden City Flour Milling Co. Pty. Ltd., £1/1/0; Gardiner, Mrs., £5; Garlick, E. W., £1/10/0; Garner, A., £1; Garner, Dr. J. F., £1/1/0; Gay, G. & Co., £1/1/0; Gears Pharmacy, £1/1/0; Geddes, Miss I., £5; Geelong & District Community Club, £100; Gemmola, V. F., £1/1/0; General Stationers Pty. Ltd., £2/2/0; George Hotel, £1/1/0; George, Miss K., £1/1/0; Gill, T., £1; Gill & O'Keefe, £1/1/0; Gilbert, G. A., £2/2/0; Gilbert, Estate of Mrs. Iris, £5/5/0; Gilbert, R., £1/1/0; Gillett, R. L., £1; Gilmour, Mrs. G. L., £5/5/0; Gingell, H. V. & G., £1/1/0; Goller, J. J. & Co. Pty. Ltd., £15/15/0; Goodfellow & Co., £1/1/0; Gordon, Mr. & Mrs. George, £50; Gordon, Dr. H. A. G., £1/1/0; Gordon, Ian, £1/1/0; Gorman, Mrs. Olga, £2/2/0; Gough, Dr. R. J., £5; Gillett, G. A., £1; Grigsby, L. J., £1/1/0; Golf House Hotel, £1/1/0; Gowers Hosiery House, £1/1/0; Golden Point State School, £1/11/4; Golding, W. J., £2/2/0; Graebisch, J. H., £2; Grant, G., £1/1/0; Green, E. P., £1; Green & Hodges, £1/1/0; Green, J., £1; Greenbank, S., £1; Greig, Miss M., £10; Grenfell, W. H., £1/1/0; Greville, Mr. J., £1/2/0; Gribble, Mrs. I., £1/1/0; Griffey, M., £1/1/0; Griffiths, Dr. G., £1/1/0; Griffiths, M. C., £3/3/0; Griffiths, Dr. W. R., £1/1/0; Grigg, Mrs. D., £1; Grigg, Mrs. J. F., £2/2/0; Grist, Mr. W. & Mrs. H., £2/2/0; Grubb, W. J., £25; Gullans, £1/1/0; Gunn, Mrs. L. N., £1; Guymmer, F. E., £2/2/0.

Hainty, S., £1; Hall, Mrs. Thelma, £5; Hager & Rawlings, £2/2/0; Haintz, T., £1/1/0; Ham, W. S., £1; Hames & Woodward Pty. Ltd., £1/1/0; Hancock, A. W. & Co. Pty. Ltd., £1/1/0; Hannan, J. J., £5/5/0; Hanrahan, J., £1; Harris, J. A. Furniture, £2/2/0; Harris, J. H., £1/1/0; Harrison, Mrs.

LIST OF CONTRIBUTORS — Continued

B., £2/2/0; Harrison, G. £1; Harrison, Harry. £1; Harrison, Mrs. M., £1/1/0; Hart, Mrs. T. J., £1/1/0; Hartwick, Mr. & Mrs. R. E., £20; Harvey, J. & M., £1; Hastie, J. S., £1; Hatley, S. A., £1; Hatfield, Mrs. Amy, £1; Hawkins, Dr. J. R., £1/1/0; Hayden, B. E. & Co., £1/1/0; Hayes, Mrs. W. T., £1; Hayward, W., £1; Healing, A. G. Ltd., £2/2/0; Heath, Dr. A., £1; Heather, L. W., £2/2/0; Heinz & Gordon, £2/2/0; Heinz Bros. Pty. Ltd., £2/2/0; Henry Haymes Pty. Ltd., £1/1/0; Headlam, J. S., £5/5/0; Hepburn, Cliff, £1/1/0; Herald-Sun News Pictorial, £20; Herald & Weekly Times Ltd., £15; Herring, J. F., £5; Herrod, S., £1; Hewitt, J., £1; Hewitt, J. S. & B. M., £2/2/0; Hewitt & Whitty Pty. Ltd., £1/1/0; Hucker, Mrs. M., £25; Hickson, A., £1; Higgins, A. E., £2; Hillman, Mrs. A., £1; Millman, Mr. & Mrs. J., £1; Hitchcock, H. E., £5; Hobson, S. E. & Sons, £3/3/0; Hocking, G., £1; Hodgson, F. & K., £2/2/0; Holding, G. H. C., £5; Holloway, John & Sons, £1/1/0; Holmes, Mrs. C. A., £1/1/0; Holmes, F., £1; Holmes, W. E., £1/10/0; Hon, W., £1/1/0; Hooker, Mr. & Mrs., £1; Hopkinson, S., £1; Hornbuckle, R. A., £1/1/0; Horsham Motel, £1; Horton, R. W., £5/5/0; Hoskin, J. A. & Son, £5/5/0; Houghton & Byrne (Vic.) Pty. Ltd., £5; Howard, M., £1; Howard, W. J., £1; Howell, A., £1/1/0; Howell, R. P., £1/1/0; Howie, R., £1; Hoyce, Leo, £2; Hub Furnishing Centre, £1/1/0; Hudson, R. A., £1/1/0; Hughes, Arthur, £2; Hughes, T. & Sons, £1; Hughes, Mrs. M., £25; Hutchings Motors, £2/2/0; Hutchinson, R. H., £2/10/0; Hutchinson, Sydney, £3; Hynes, E. P., £1.

I. G. Supply Co. Pty. Ltd., £2; Ince, R. V., £1/1/0; Irwin, Mrs. H. B., £1/1/0.

Jackman, C. W., £1/1/0; Jackson, B. L., £3/3/0; James, Barry, £1/1/0; James, C. W. B., £1/1/0; Jamieson, Robert, £5/5/0; Jelbart Bros., £5/5/0; Jenkins, Mr., £10; Jenkins, Chris, £5; Jenkins, E. & W., £1; Johns, A., £2; John, D. H., £2/2/0; John, M. B. & Hattersley Ltd., £5/5/0; Johnson & Johnson Pty. Ltd., £2/2/0; Jolly, A. C., £1; Jolly, J. H., £1/1/0; Jones, C. V., £2/2/0; Jones, C. W., £2/2/0; Jones, E., £10; Jones, Eric, £20; Jones, J. E. R., £1/1/0; Jordon, Mr. & Mrs. E. W., £3/3/0; Joshua, Robert, £1/1/0.

Kavanaugh, B., £1; Keighery, Miss E., £1; Keith, D., £1/1/0; Keith, J., £1/1/0; Kelly, D. P., £1; Kelly, R. J., £1; Kemp Estate, Late Gordon, £10; Kennedy, J. M., £1/1/0; Kennedy, Cr. Les, £1/1/0; Kennedy Murray Pty. Ltd., £1/1/0; Kent, U. & V., £1/1/0; Kerr, Mrs. H., £1/1/0; Kerr, W., £1; Kerr & Lewis, £1/1/0; Kierman, Mrs., £5; Kilgour, Mrs. G., £1; King, A. L. & Co., £1/1/0; King, G. H., £1/1/0; King, R. A. & V., £1/1/0; Kinnersley, N., £1/1/0; Kinnersley, P. C., £2; Kirsch, Jessie, £1; Kittson, Mr. & Mrs. J. F., £1/1/0; Knight, A. A., £1/10/0; Knight & Son, £1/1/0; Knowles, R., £1; Kopke, Mrs. M., £1/1/0.

Lanc, Tom, £1/1/0; Lancaster, Mrs. C., £10; Lancaster, W. J., £10; Lancashire, P. F., £1; Lance & Yorke, £1/1/0; Langlands, J. & Sons Pty. Ltd., £2/2/0; Lawrence, F. I., £2; Lawrie, D. C., £2; Labbett, Mrs. A. E., £1/1/0; Labbett, F. V., £2/2/0; Laidler, L., £1; Lamont Bros., £5/5/0; Lamont, H. J., £5; Leishman, A. G., £3; Leishman, A. T., £1; Leishman, Mrs. D. H., £2/2/0; Leishman, J. H., £2/2/0; Leishman, Ron C., £2/2/0; Lemke, Geo. A. & Co., £1/1/0; Lennox, M. G. & D. A., £10; Leslie-Smith, J., £2/2/0; Lester, R. R., £1/1/0; Lewis, C., £1/1/0; Ley, J. F. & M. H., £2; Lincott Linen Co. Pty. Ltd., £2/2/0; Lindsay & McKenzie Pty. Ltd., £5/5/0; Lockett, Howard & Sons Pty. Ltd., £1/1/0; Lockhart, A. W. F., £2/2/0; Lockhart, A. J., £1; Lockhart, W., £1; Lonsdale, J., £2/2/0; Lopert, Drs. I. & H. J., £2/2/0; Lorensini, Mrs. K., £1; Lowery Bros., £2/2/0; Lucas, E. & Co. Pty. Ltd., £10/10/0; Lucas, M. & N., £1; Lustral Pty. Ltd., £1/1/0; Lynch, D. B. & S. E., £1/1/0; Lynch, L. C., £1; Ludbrook, S. C. & Son, £1/1/0; Leeman, J., £1/1/0.

MacRow, A. J., £1; Madden, J. & J., £1/1/0; Maddern, R. & Son, £1/1/0; Maher, M. & P. J., £1; Malcolm, Jas. & Co. Pty. Ltd., £5/5/0; Manifold, Sir Chester, £5; Manifold, Mrs. John, £2/2/0; Marchant, Mrs. J., £1; MacQueen, Miss F. T., £1; Mario's Fruit Supply, £1/1/0; Mark & Philp Pty. Ltd., £1/1/0; Marks Motor Service, £1/1/0; Mac's Ballarat Garage, £1; Macks Hotel, £1/1/0; Macartney, Mrs. M., £3/3/0; MacKay, Keith, £3/3/0; MacKay, R., £1; Marshman, D. A., £1/10/0; Martin, Miss A., £1; Martin, H. V., £10; Martin, S., £1; Martin Stoneware Pipe Pty. Ltd., £3/3/0; Martins United Tyre Service, £1/1/0; Maryborough Flour Mills Pty. Ltd., £1/1/0; Mathews, A. M., £2; Mathews, A. & L., £1; Matthews, Mrs. Hilda, £1/1/0; Matuschka, V., £5; Maunder, R., £1/1/0; May, A. C., £1/1/0; May & Baker (Aust.) Pty. Ltd., £5/5/0; May, H. A. & Son, £1/1/0; Mayne Nickless Ltd., £5; Mellar, S. A., £2; Memery, H. E., £3/3/0; Menhennett, G. W. Jnr., £3/3/0; Merchants Supply Co., £2; Messer, Mr. & Mrs. W., £2/2/0; Messer & Opie Pty. Ltd., £1/1/0; Middleton, H. W., £1/1/0; Michaelas Hallenstein & Co. Pty. Ltd., £2/2/0; Miles, J., £2; Milk Processors Pty. Ltd., £5/5/0; Millar, A. R., £1; Millard, R. G., £3/3/0; Miller, A., £1; Miller Bros. Ironworks Pty. Ltd., £1/1/0; Miller, P. J. Estate, £1/1/0; M. M. M., £10; Moloney, Mrs. B. J., £1; Monds, A., £1; Moneghetti, J., £1; Moore, Geo. D. & Son, £1/1/0; Morgan, Mr., £1/10/0; Morley, I. & R. Pty. Ltd., £5/5/0; Moroney, Miss K., £1/10/0; Morris, H. A., £1/1/0; Morris & Walker (Ballarat) Pty. Ltd., £5; Mortimer, J. J., £1/1/0; Morrison, S., £1; Morrison, George, £1/1/0; Morshead, William R., £5/5/0; Morsheads Pty. Ltd., £2/2/0; Morton, Eric R., £1; Motor Spares Ltd., £2/2/0; Moyle, Miss A. M., £1; Moyle, J. P., £1; Mullane, S. J., £1; Muller Bros., F. G. & J. E., £10; Muller, J. F., £1; Muller,

RETIREMENT OF Mr. KEITH MACKAY

THE RETIREMENT OF Mr. KEITH MACKAY WAS MARKED BY MANY FUNCTIONS AND PRESENTATIONS



ABOVE : Mr. and Mrs. Keith Mackay with Cr. A. E. Mills and Mrs. Mills, the Mayor and Mayoress of Ballarat, Cr. J. A. and Mrs. Chisholm, and Mr. and Mrs. Frank Black on the occasion of the Public Testimonial

BELOW : Mr. Keith Mackay with Executive Officers of the Home





ABOVE : Mr. and Mrs. Mackay receive
a presentation from the Administrative Staff



At the function organised by the residents of
Percy Baxter Homes and the Hostels



Receiving a presentation from Mrs. R. King,
President of the Q.E.H. Ladies' Auxiliary



Receiving a presentation from the President of
the Staff Social Club, Mr. F. N. M. Petch and
the Deputy Matron, Sister Crispe (right)

LIST OF CONTRIBUTORS — Continued

R., £1/1/0; Muntz, Mrs. E. M., £3/3/0; Muntz, E. W., £3; Murphy, J., £1; Murray, J. C., £1; Myttons Ltd., £2/2/0; Mackay, Cr. W. A., £2/2/0; Miller, S. A., £2; Mahonev, R., £1; McArdie, Miss A., £50; McArdie, F. P., & J. E. Walker, Drs., £2/2/0; McAuley, L. J., £1; McCallum, W., £1/1/0; McCarthy, H., £1; McCartney, S., £1; McCartney, T. W., £1/1/0; McClelland, A., £1; McCrae, Alex., £2; McCrae, L., £2/2/0; McCubbin, W., £1; McCunnie, Dr. W., £1/1/0; McDonald, A. L., £1; McDonald, D., £1; McDonald, C. W. S., £3/3/0; McDonald, Mrs. E., £1; McDonald, Mrs. J. M., £2; McDonald, Mrs. L., £1; McDonald, Noel, £1; McDonald, W. B., £1/1/0; McFadyen & Taylor Pty. Ltd., £1/1/0; McGannon, Mrs. T., £1; McGrath, F., £1; McGregor Bros., A. C. & N., £1/1/0; McIvor, C., £2/2/0; McIvor, S. K., £1/1/0; McKay, Mrs., £1; McKay, John, £2; McKay, Estate Late Mrs. Laura, £10; McKay MacLeod Pty. Ltd., £3/3/0; McKenzie, C., £2; McKenzie, D. J., £1; McKenzie, J. & O., £1/1/0; McKenzie, J. F., £1/1/0; McKew, B., £1/10/0; McKinley, G., £1/1/0; McKinnon, Angus, £1; McLean & Boakes, £1/1/0; McLeod, W., £2/2/0; McManus, J., £1; McMaster, Mrs. H. A., £2; McMillan, A. D., £2; McNair, Miss H., £1; McNaughton, Miss M., £2; McPherson, Mr. M., £1/1/0; McKellor, Mrs. R., £16; McCoy, Mrs. M., £1.

National Tyre Service (Ballarat) Pty. Ltd., £1/1/0; Nestor Bros., £1/1/0; Nestor, Mrs. E., £1/1/0; Nevin, Mrs. G., £1; Nevett & Glenn, £1/1/0; Nicholson, Cr. A. W., £2/2/0; Nicol, Mrs. A. F., £1/1/0; Nicol, A. J., £1; Nightingale Chemicals (Vic.) Ltd., £2/2/0; Ninnis, S. J., £1/1/0; Nolan, J. & Son, £2/2/0; Nunn, E. J., £1; Nunn, H., £1; Nunn, Roy, £1; Norman, R. L., £5.

O'Beirne, J. & F., £1/1/0; O'Brien, Fr. T., £1; O'Collins, Bishop, £1/1/0; O'Donnell, J., £1/1/0; Oddie, Miss Margaret, £5; Odeon Theatre, £1/1/0; O'Donnell, J., £1/1/0; O'Donohue, P., £1; Old Colonists Club, £2/2/0; Oliver & Stevens, £1/1/0; Olney's Cafe, £2/2/0; O'Loughlin, Kevin, £5; Oman, J. R., £5/5/0; Opie, Mr. & Mrs. F., £10; Oppenheim, W., £1; Ordell, Mrs. E. P., £2/2/0; O'Sullivan, Dr. D. M., £1/1/0; Otis Elevator Co. Pty. Ltd., £3/3/0; Owen, J. F., £1; Ox-brow & Co., £3/3/0; Owen, W. Pty. Ltd., £5/5/0; Oxley, A. J., £1; O'Brien, Mrs. P., £2/2/0.

Page, F., £2; Packham, A. J., £1/1/0; Palmer, L. L., £1; Papper, C. & S., £1; Parker, Mrs. P., £1; Parkes, Ron, £1/1/0; Parkes, R. J., £1/1/0; Parkinson, Mrs. A., £1; Parry, W. J. & Son, £1/1/0; Pasco, R., £1; Pascoe, T., £1/1/0; Paterson, Laing & Bruce, £1/1/0; Paulett, J. D., £1; Pearson, H., £1; Pearson, Mrs. H., £1; Pennant, C. W., £1/1/0; Penny, Jas & Sons, £1/1/0; Pern, Dr. G., Dr. N. Pescott & Dr. J. Cousins, £1/1/0; Perry, L. J., £1; Petch, F. N. M., £1/1/0; Peters, Ian, £1/1/0; Peters, Lyle, £2; Petrie, G., £2/2/0; Petrie, J. R., £1/1/0;

Phillips, B., £1; Physiotherapy Group, £1/1/0; Pickford, Mrs. A., £2/2/0; Pickford, Miss E. A., £2; Picot & Widmer, £1/1/0; Pittard, A. C. & Son, £1/1/0; Pittard, H. L., £1/1/0; Pittard, M. J., & Son, £1/1/0; Pizzey, Geo. & Son, £1/1/0; Plinius, J. A., £1/1/0; Pobjoy, A. D., £1; Pope, Charles, £2/2/0; Poole, A. & E., £1/1/0; Porter, F., £1/1/0; Postlewaite, F. J. & M. E., £10; Postlewaite, Mrs. T. C., £1; Poulton, A. W., £1/1/0; Powell, G., £1; Powell, Mrs. W., £1/1/0; Pratt, David & Sons, £1/1/0; Premier Heating & Ventilation Co., £1/1/0; Premier Plumbing Service, £1/1/0; Preston, C., £1; Pinney, N. H. & A. E., £1/1/0; Proud's Pty. Ltd., £1/1/0; Prowse, C., £1/1/0; Punshon & Plummer Pty. Ltd., £1/1/0; Parker & Chamberlain Pty. Ltd., £1/1/0; Pscott, Dr. N. F., £3.

Quarrell, Mrs. E. & Sons, £5; Quayle & Hutton, £1/1/0; Quinlan, Mrs. T., £1; Quin, R. D., £1/1/0; Quinlan, Mrs. M., £5/5/0.

Radio Cabs, £1/1/0; Radio Cabs Service Station, £1/1/0; Rae, Jack, £1; Ramsay, R. H. & Gaunt, £1/1/0; Rankin, L. A., £1; Rapkin, H., £1/1/0; Read Bros., £5/5/0; Redan Old Scholars Association, £2/2/0; Redemptorist Fathers, £1; Redman, A. J., £1; Redman, George, £1; Rehfish, H. & Co. Pty. Ltd., £1/1/0; Reid, Estate John & Sons, £2/2/0; Reid, R. J., £1; Replacement Parts Pty. Ltd., £2/2/0; Reynolds, Mrs. E. L., £1; R. & H. Foodland, £2/2/0; Rice, J. D., £2/2/0; Richards, Mrs., £1/1/0; Richards, P. S. & G. S., £3/3/0; Richardson, B., £10/5/0; Richardson, Mrs., £1; Rickey Bros., £2/2/0; Riddick, Mr. & Mrs. G., £1; Rimmington Bros. Pty. Ltd., £2/2/0; Ristuccia, E., £1/7/6; Ritchie, J., £2/2/0; Ritchie, Robert Pty. Ltd., £1/1/0; Ritchie, W., £1; Ritchie, Wm. Pty. Ltd., £1/1/0; Rizzoli, L. J., £1; Robertson, Miss, £1/15/11; Robertson, Mrs. E. G., £1/1/0; Robertson, McKean & O'Neil, £3/3/0; Robinson, G. R., £1/1/0; Robinson, M. G., £1/1/0; Robson, W. J. & Sons, £1/1/0; Rodda, W. J. & O. J., £1/1/0; Roddis, W. C. & Co., £1/1/0; Roger David Pty. Ltd., £1/1/0; Rollan, Miss M., £20; Roland Tacklock, £10/10/0; Romey, Mrs. H., £3/3/0; Ronaldson, Mrs. A. V., £5/5/0; Ronaldson, R. B., £2/2/0; Ronaldson Bros & Tippet Ltd., £5/5/0; Ronaldson Bros. & Tippet Welfare Society, £2/2/0; Rowe's Mascotte Cafe, £1; Rowe, Chas. & Son, £1/1/0; Rowen, W. J. & Co., £1/1/0; Russell, George (Executors of the late), £5/5/0; Russell, John L., £5; Russell, Keith, £1/1/0; Russell, Major Phillip, £10/10/0; Russo, Connie, £1/1/0; Rutledge, Mrs. F. T., £10/10/0; Ryan, E. J., £1; Ryan, F., £1; Ryan, G., £1; Ryan, Mrs. R., £1/1/0; Ryan, Vin, £1/1/0; Ritchie, William, £26/10/0.

Salter, Dr. A. G. H., £2/2/0; Salter, John, £1/1/0; Sampson, Mrs. G. (Estate of the late E. C. Treadwell) £100; Satchell, Mrs. H., £1; Scales, Mrs. E. E., £1/1/0; Scholes, Miss Elsie, £1/1/0; Schofield, Mrs. E., £1; Schrader & James, £1/1/0; Schreenan, J., £1; Schwepes (Aust.) Pty. Ltd., £2/2/0; Scott, A. C.,

LIST OF CONTRIBUTORS — Continued

£2; Scott, Miss C., £1; Scott, E., £2/2/0; Scott, E. J., £1; Scott, S., £1/1/0; Scutchcon, Mrs. M., £20; Seabrook, T., £2; Schonell, K. & A., £1/1/0; Searle, Miss N., £2; Seers, E. C., £1; Selkirk, James Pty. Ltd., £1/1/0; Sewell & Sewell, £3/3/0; Sewell, Mrs. V. S., £1; Shaw, H., £2; Shearer, I., £1; Shearer, Jack, £1; Shell Co. of Aust. Ltd., £2/2/0; Silver Top Taxis, £1/1/0; Sim, R. & Co., £1/1/0; Skewes, David B., £2/2/0; Sloss, Dr. W. A., £20; Sloss, Dr. W. Lister, £2/2/0; Smail Bros., £2/2/0; Smail, J. J., £1/1/0; Smerdon, R., £1; Smith, Mrs., £1; Smith, Mrs. D., £2/2/0; Smith, Mrs. E. E. E., £3/3/0; Smith, H., £2/2/0; Smith, Herbert E. Pty. Ltd., £1/1/0; Smith, K. T. & E. M., £1/1/0; Smith, Jas. Pty. Ltd., £1/1/0; Smith, Mrs. Wilfred E., £1/1/0; Smith, W. G., £2/2/0; Smith, W. J., £1; Sobey, J. W., £1; Stowe, L. & R. G., £1/1/0; Stadus, I. & J., £1; Steenhuis, Mrs. J., £1; State Savings Bank (Staff), £2/2/0; Stepanell, J. A., £1/1/0; Stevens, John, £2/2/0; Stephen, W. F., M.L.A., £2/2/0; Stevens, Dr. J. S. T., £1/1/0; Stevenson, Percy T., £2/2/0; Stevenson & Taylor Pty. Ltd., £1; Spittle, Mrs. G. H., £1/1/0; Spittle, Mr. & Mrs. W., £60; Strickland, J. & M., £1/1/0; Stoddard, Miss. E. J., £3/3/0; Stohr, A. E., £2/2/0; Stone, Mrs. A., £1/1/0; Stone's Drapery Stores Pty. Ltd., £1/1/0; Stowe, L. & R. G., £1/1/0; Strickland, E. J. & Sons, £1/1/0; Stride, G., £1; Sugg, C., £1; Sutton, Mrs. J. S., £1; Sutton, Kingsley, £1/1/0; Swallow & Ariell Pty. Ltd., £2; Swallows Biscuits Pty. Ltd., £1/1/0; Swan, J. M. & Son, £1; Symons, H. J. Pty. Ltd., £2/2/0; Stevens, T. R., £52/10/0; Storer, Mrs., £1/13/7.

Thompson, Roy, £10; Tait, J. & Son, £1/1/0; Tallent, Mrs. W. F., £2/2/0; Tavor, Cr. F., £1; Taylor, K. J. & C. J., £1/1/0; Taylor, Kevin R., £10; Taylor & Taylor, £1/1/0; Tavor, M. G. Motors Pty. Ltd., £2/2/0; Thiessen & Irvine, £2/2/0; Thom, F., £1; Thomas, N. K., £1; Thomas, G., £1; Thomas, G., £2; Thomas, Jas. A., £2/2/0; Thomas, Dr. J. E., £1; Thomas, N., £1; Thornton, S., £1; Thornton, Mrs. G., £2; Thompson, A. H., £1; Thompson, J. A., £1; Thornton-Richards & Co., £1/1/0; Thynne, P. J., £1/1/0; Tierney, J., £1/10/0; Tinney, A. R., £1; Tippet, Mrs. A. R., £3; Tippet Bros., £4/4/0; Tippet, Mrs. H. J., £1/1/0; Titheridge & Growcott, £1/1/0; Tobin, Noel & Son, £2/10/0; Toohey, Mrs. A., £1; Toohey, C., £2; Toose, A. W., £5; Toose, G. C., £5; Torney, Geo., £2/2/0; Toshack, H. J., £5; Townsing, A. C., £1; Towner, C. G., £1/1/0; Trahar Brothers, £2/2/0; Treadwell Carpets Pty. Ltd., £1/1/0; Treasury, Victoria (Charity Race Meetings), £80/2/8; Tredmar Chemical Products, £5/5/0; Tregenna, W., £1; Tregonning, Harry Pty. Ltd., £5/5/0; Tremaine, J. W., £1; Trengrove, E. A., £1; Trevenen, J. L., £1/1/0; Trewin, L., £1/1/0; Trigg, H. & Son, £1/1/0; Trigg, Mrs. Len, £1; Troon, H. Pty. Ltd., £1/1/0; Trump, D. L., £5; Trust A/c., Bertha Taylor, £4/0/7; Tucker, E. F., £10/10/0; Tucker, J. C., £1; Tucker, L. H.,

£1; Tunbridges (Ballarat), £2/2/0; Turner, A. L., £1; Turner, A. & L., £1; Turner-Clarke, R., £5; Thomas, W. J., £10; Tatlock, Alfred & Son, £10/10/0; Timken, Australian Pty. Ltd., £25.

Uebergang, A. W., £3/3/0; Uebergang, E. P., £3/3/0; Uebergang, G. A., £5; Unilever Australia Pty. Ltd., £10.

Valpied, L. G., £1/1/0; Vawdrey, Mrs. E. M., £5; Vendy, F. J., £1/1/0; Vernon, Mrs. D. M., £1/1/0; Vernon, Miss K. M., £2/2/0.

Waight, Les., £2/2/0; Walker, I., £1; Walker, Stanley, £2/2/0; Walker, W., £1; Wallace, Mr. & Mrs. Alan, £1/1/0; Wallace, J., £1; Wallace Dairy Co. Ltd., £2/2/0; Waller & Chester Pty. Ltd., £1/1/0; Wallis, Robert H. & Son, £1/1/0; Walton, G. C., £1; Walton, J. C., £20; Walton, Cr. W. A., £2; Wangler, A. E., £2/2/0; Watkins, Mrs. M., £1; Wain, A. S. & Son, £1/1/0; Waldron, Mrs. E. M., £1; Walker, J., £1; Ward, M. C. & B. A., £2; Webb, L. & K., £1/1/0; Weir, S. J. Pty. Ltd., £3/3/0; Weller, E., £1; Wells, L., £1; Wood, Oliver, £15; Wendouree Woollen Mills Pty. Ltd., £5/5/0; Wendt, Vic. Motors, £2/2/0; Western Hotel, £2/2/0; Wettenhall, N. S., £2/2/0; Wheeler, S. C., £1; Whettenbury, E. N., £1; Whibley, F. L., £1/1/0; White, C. T. & R., £5; White, Hilton, £25; White, P., £1; White, Joe Maltings Pty. Ltd., £50; Whittaker, Mrs. K. W., £1; Whykes, H. L., £3/3/0; Widgey & Wilson, £1/1/0; Wilding, E., £1/1/0; Wilding, E. K., £1/1/0; Wilkie, J., £1; Wilkinson, Mrs. S., £1; Williams, Alex, £2/2/0; Williams, H., £1; Williams, J., £1; Williams, N. B., £2; Williams, R. & R. A., £1/1/0; Williams The Shoeman Pty. Ltd., £1/1/0; Williams, W., £2; Williams, W. D., £1; Williams & Searle, £1/1/0; Wills, Lewis, £2/2/0; Wills, W. D. & H. O. Aust. Ltd., £5; Wilson, A. C., £2/2/0; Wilson Bolton & Co., £1/1/0; Wilson, F., £1; Wilson, F. Bros., £1/1/0; Wilson, F. N., £2/2/0; Wilson, H. C., £1; Wilson, Mrs. J. V., £1; Wilson, R. V., £1; Wilson, T. W., £1; Wilson, Warne A., £1/1/0; Wood, Artie & Son, £1/1/0; Woodward, A. & Sons, £2/2/0; Woolworths, Pty. Ltd., £2/2/0; Wooster, E. W., £1; Wotherpoon, J. R. & Co., £1/1/0; Wright, Mrs. R., £1; Wyle, C. R., £2; Wylie, Mrs. E. A., £5/5/0; Wylie, R. & A., £5/5/0; Wyres Bros., £1/1/0; Weller, Edward, £1/1/0.

Young, C. A., £2/2/0; Young, C. L., £1; Young, Estate of C. R. Gordon, £2/2/0; Young, Mrs. L. H., £1; Young, Keith, £1/1/0; Young, H., £1; Yuncken Freeman Architects, £15/15/0.

Estate Sir N. Zeal, £40.

BANKS

Australian & New Zealand Bank Ltd., £4/4/0; Bank of New South Wales, £3/3/0; Commercial Bank of Australia, £3/3/0; E.S.&A. Bank Ltd., £3/3/0; National Bank

LIST OF CONTRIBUTORS — Continued

of Australia Ltd., £3/3/0; National Bank of Australia, Lydiard Street, £3/3/0; Commercial Banking Co. of Sydney Ltd., £3/3/0.

BOXES

Eastern Station Hotel, £1/7/0; Avoca Hotel, £1/2/0; Lake View Hotel, £2/6/0; Golden City Hotel, £1/5/0; Hobbs Beaufort Hotel, £2/2/6; Buangor Hotel, £1/14/9; Campbelltown Hotel, £2/10/6; Canberra Hotel, £1/11/0; Capri Coffee Lounge, £3/2/0; Dean Hotel, £4/3/0; Dooen Hotel, £2/16/3; Dunnstown Hotel, £1; Ezywalkin, £4/4/6; Plough Inn Hotel, Myrniong, £2/14/0; McRae's Hotel, £1/12/0; Mt. Jeffcott Hotel, Donald, £1; North City Hotel, £1/1/9; Railways Hotel, £1/12/0; Robin Hood Hotel, £1/11/6; Royal Hotel.

Meredith, £1/14/3; Valpied, W., £15/5/0; Victoria Hotel, St. Arnaud, £4/6/0.

INSURANCES

Caledonian Insurance Co., £1/1/0; New Zealand Insurance Co. Ltd., £10/10/0; London & Lancashire Insurance Co., £1/1/0; Norwich Union Insurance Co., £1/1/0; South British Insurance Co. Ltd., £2/2/0; United Insurance Co. Ltd., £1/1/0; Union Fidelity Trustee Co. Aust. Ltd., £3/3/0.

LODGES

Yarrowee Lodge, No. 10, £2/2/0; Wendouree Lodge, No. 336, £1/1/0; Sebastopol Lodge, No. 63, £2/2/0; All Nations Lodge, No. 28, £1/1/0; Ballarat & District M.U.I.O.O.F. Lodge, £2/2/0; Hope Masonic Lodge, No. 274, £5/5/0.



BEQUESTS AND DONATIONS FROM ESTATES

ANSTIS, M. A., Estate per Evans & Metcalfe. Share in Distribution	£219	12	9
BASAN, E. T. A., Charitable Trust per Gair & Blake. Allocation	50	0	0
BAXTER, Percy, Charitable Trust	5,100	0	0
BELL, Margaret Gladys, Estate per J. F. Strachan & R. R. Aitken Legacy ..	1,000	0	0
BENNETT, Ellen, Estate Donation from relatives	184	11	3
COLLIER, Charitable Trust, Donation	2,000	0	0
DERMER, M. A., Estate per Cuthbert, Morrow, Must & Shaw. Share in Residue	471	12	6
DONNELLY, N. M., Estate per Nevett & Glen. Share of Distribution	207	8	5
DRAPE, Elizabeth, Estate per Mr. L. V. Kennedy. Bequest	20	0	0
DRISCOLL, E. R., Estate per The Union Fidelity Trustee Co. Ltd. Share in Distribution	39	10	8
FELTON, Alfred, Estate per The Trustees Executives & Agency Co. Ltd. Donations from Charitable Trust	300	0	0
GRAYLING, Jane, Estate per The Union Fidelity Trustee Co. Ltd. Share in Estate	9	7	2
MITTEN, Gertrude Emily, Estate per The Union Fidelity Trustee Co. Ltd. Legacy	100	0	0
MORROW, James, Estate per The Union Fidelity Trustee Co. Ltd. Legacy ..	20	0	0
MOZLEY, Winnifred, Estate per Heinz & Gordon. Balance Share in Estate ..	779	8	3
RAE, Jane Trevena, Estate per The Union Fidelity Trustee Co. Ltd. Share in Estate	160	14	6
SEELEY, E. M., Estate per Sewell & Sewell. Legacy	254	10	5
SMITH, James, Estate per The Union Fidelity Trustee Co. Ltd. Share in Estate ..	525	10	6
TAYLOR, Joseph, Estate per The Union Fidelity Trustee Co. Ltd. Legacy ..	25	0	0
THOMAS, C., Estate per Heinz & Gordon. Legacy	50	0	0
THOMAS, W. C., Estate per Malleon Stewart & Co. Allocation from Income ..	200	0	0
WARE, Ethel, Estate. Donation from Relatives	100	0	0
WHITE, Joe, Bequest. Donation	500	0	0
WILKINSON, M. A., Estate per The Perpetual Executors & Trustees Assoc. of Aust. Ltd. Income from Estate	269	13	11
WILSON, J. W. Estate per The Union Fidelity Trustee Co. Ltd. Share in Distribution	89	11	7



The two-rink Bowling Green is a most popular centre during the summer. Shown above are members of the Q.E.H. Ladies' Bowling Club, and below, members of the Q.E.H. Men's Bowling Club





The President, Mr. J. L. Trevenen, and Manager, Mr. F. G. Black, discuss aspects of the Home's Medical Services with the Medical Officer of the Hospitals and Charities Commission, the Home's Medical Superintendent and an overseas doctor



Cr. A. E. Mills (extreme right), Chairman of Special Activities Auxilairy, presents an Electrocardiogram to the President of the Queen Elizabeth Home (Mr. J. L. Trevenen). The Treasurer of the Auxilliary (Mr. R. P. Bell), left, and Mr. Frank Black look on

Queen Elizabeth Home Ladies' Auxiliary

ANNUAL REPORT, 1964-65

To Our Members and Friends.

Ladies and Gentleman,

I have the honour to present to you the 43rd Annual Report covering activities of the Auxiliary for the past 12 months.

MEMBERS: We have added 2 new members to our Auxiliary, and members have given a great amount of their time and energy to make this year very successful. They have accompanied residents on bus trips, played social games of bowls each month and visited residents in the Home on special occasions.

The Board of Management honoured us by giving a Life Governor Certificate to Mrs. V. C. Catherall, who has been a very active worker for the Auxiliary.

We donated two Silver Cups to the Home Bowling Club to be contested for during the year, and a lot of pleasure has been derived from this source.

EFFORTS: The Annual Card Party raised £36/14/4, the Annual Fete £120/13/9, the Travellers Gala Day Street Stall £36/8/9 and the C.W.A. Musical £27/11/6.

The Monthly Card Parties raised £40/9/4, and the Monthly Meeting Market Table and Special Efforts £28/2/3. A crocheted rug donated by Mrs. Lindmark raised £8/12/6.

Miss O'Connaughton again this year donated £36/5/0 from the sale of goods made by handicapped residents.

We received a cheque of £200 from Herald Wealth Words, also a cheque from Mr. T. Cairns of £6/6/0. Our Sewing Group, with Mrs. K. T. Carvosso and Mrs. G. W. White-law as leaders, added £11/7/0 to funds. To all these very good friends we express our sincere gratitude and thank them most sincerely for their good work and efforts.

CHRISTMAS FETE: The Annual Fete was held in November in Lederman Hall; £120/13/9 was raised from the effort. Our Christmas Appeal this year was £133/19/5. Again our thanks to many donors to these special efforts for Christmas Cheer to our Old Folk.

CHRISTMAS TREE: The Annual Christmas Tree was held on 18th December, and Messrs. Clamp, Tuguey, Lonsdale and Heinz acted as Father Christmas. This function is always a special event in the lives of the residents and much looked forward to by all. Our ladies helped Father Christmas distribute the gifts and expressed good wishes to all. The Ballarat Calisthenic Club, under the direction of Miss Sue Hale, added colour and gaiety to the evening by their dancing and singing in all wards. This was much appreciated by the residents.

Mr. A. Leviston, with Mr. R. Simpkin at the piano, arranged a much enjoyed programme in Lederman Hall. The Home Choir contributed to the entertainment.

We sincerely thank Matron Rollett, the Nursing Staff, Male Nurses and Mr. A. Hives for their co-operation and help in this and all our efforts.

PICNIC: The Annual Picnic was again held at the Wendouree Municipal Hall where a sit-down dinner was served by our members. Mrs. Tinker and Mrs. Williams, of the Wendouree C.W.A., entertained the residents during the meal. All were taken by bus to the Lake where Mr. McArthur was waiting to take them for rides across the Lake. After a walk through the gardens they were all given fruit before their return home.

BUS TRIPS: Each fortnight during the summer, residents are taken for a picnic to many places of interest. Two of our ladies accompany them on these trips. A special outing is the one where they are taken around the City during the Begonia Festival, where they see the lights and decorations and all interesting aspects.

I feel this report would not be complete without mentioning the retirement of our friend and adviser, Mr. Keith Mackay and Mrs. Mackay. For many years we were able to follow his sound advice and his willingness to help us at all times; we greatly miss this, along with Mrs. Mackay as a member.

It was fitting we tendered a farewell to them both, and presented them with a gift and wished them both a long and happy retirement.

APPRECIATION: This is only a brief resume of our work during the year, and in conclusion, my most grateful thanks are extended to the President, Mrs. R. A. King, the Treasurer, Mrs. J. H. Eggleton, and Assistant Secretary, Mrs. E. A. Negri. On your behalf I thank most sincerely the Manager, Mr. F. G. Black, the Deputy Manager, Mr. A. D. McMillan, the office and nursing staff and all our contributors for their valuable assistance. To our Auditor, Mr. J. E. F. Hewitt, we say thank you for his valuable service. Special thanks are due to the representatives of the Ballarat Courier for their co-operation.

BERNICE I. FERGUSON,

Honorary Secretary.

PRESIDENT'S ADDENDUM

The pleasant atmosphere and smooth running of this auxiliary is attributed to the conscientious and cheerful co-operation of its many members. I take this opportunity

express my grateful thanks to the Secretary, Assistant Secretary, Treasurer, Press Reporter, and remaining members of the executive for an excellent job well done.

The Executive Director, Mr. Black, his Staff, President and members of the Board of Management have been most helpful and co-operative during the year and have shown keen and practical interest in the work of this auxiliary. To them I express my grati-

tude. The regular and cheerful service rendered to our members by Mrs. Hines on the occasion of our meetings is appreciated by all.

My year of office has been a pleasant one, and I take this opportunity of expressing my sincere thanks to one and all for the privilege to serve.

VIOLET KING,
President.



QUEEN ELIZABETH HOME LADIES' AUXILIARY

REVENUE ACCOUNT

YEAR ENDING 31st MAY, 1965

RECEIPTS		EXPENDITURE	
Balance in Bank, 1st June, 1964	£67 14 10	Trust Account C/o. Q.E.H.	£275 0 0
Bank Interest, 1st June, 1964	1 7 7	Christmas Treat	231 11 4
Subscriptions	10 15 0	MISCELLANEOUS EXPENSES —	
DONATIONS —		Functions, etc.	59 14 2
Miss Connaughton	£36 5 0	Picnic	45 0 10
Mr. T. Cairns	6 0 0	Easter Treat	65 16 0
Q.E.H. Bowls	2 2 0	Bus Trips	26 10 0
Herald W. Words	200 0 0	Sundries	34 2 3
	244 7 0	Change for Functions	55 0 0
Christmas Fete	120 13 9	Balance in State Savings Bank	34 0 5
Christmas Appeal	133 19 5		
MISCELLANEOUS FUNCTIONS —			
Annual Card Party	36 14 4		
Monthly Card Party	40 9 4		
Travellers' Day Stall	36 8 9		
C.W.A. Musicales	27 11 6		
MONTHLY MEETINGS —			
Special Efforts	28 2 3		
Sewing Circle	11 7 0		
	180 13 2		
SPECIAL DONATIONS —			
Gifts and Flowers, Red Cross.			
Q.E.H. B.C. Cups, N.C.W.			
Affiliation	12 4 3		
Change for Functions rebanked	55 0 0		
	£826 15 0		£826 15 0

O. EGGLETON, (Mrs.),
Hon. Treasurer.

Examined and found correct.
J. E. F. HEWITT, A.A.S.A.



Printed by
J. A. HOSKIN & SON
21-23 Peel Street North, Ballarat
on Art Paper generously donated by
THE BALLARAT PAPER MILLS PTY. LTD.