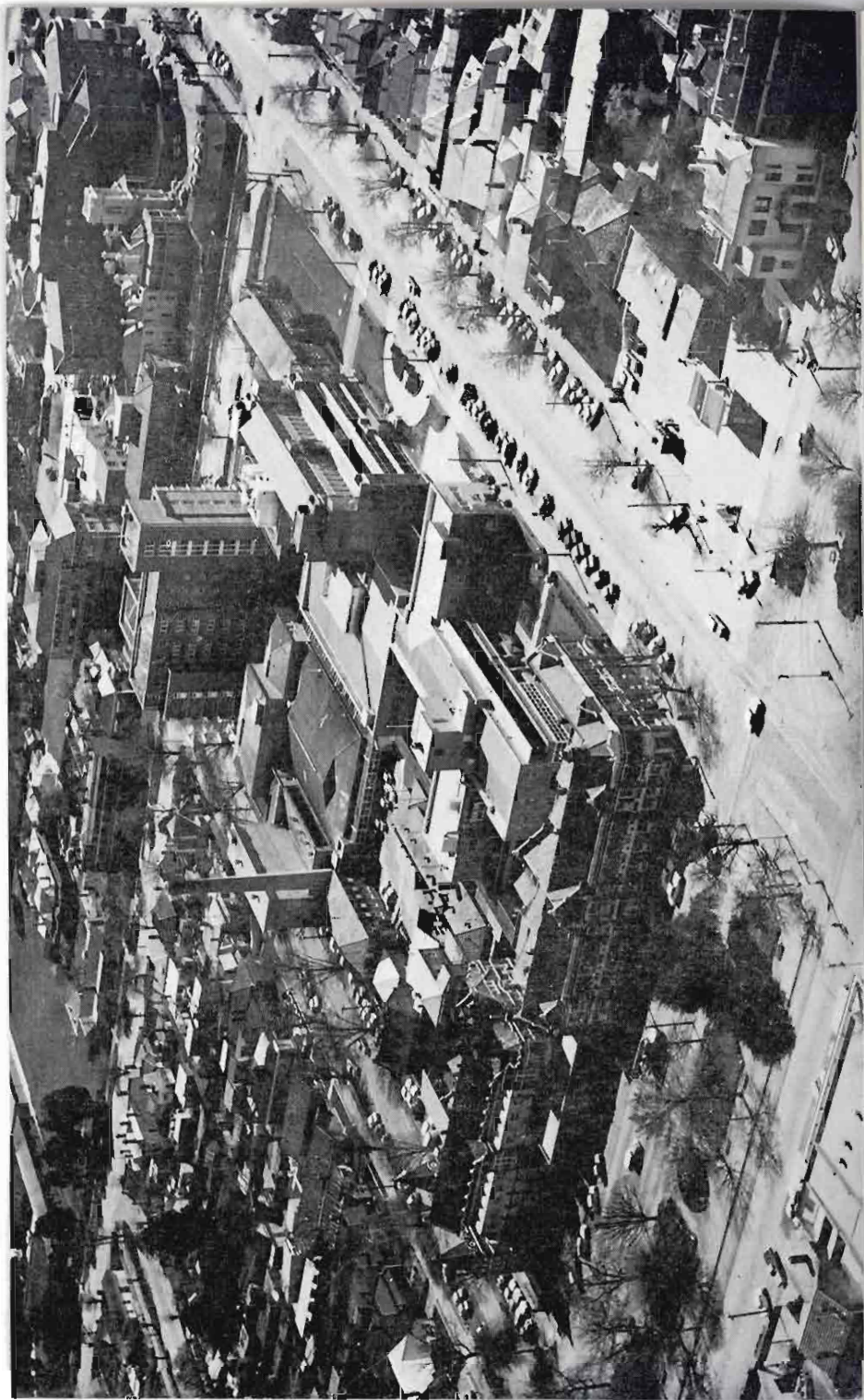




Are YOU Interested  
in a  
Broad Basis for  
*Medical Practice*



\*

**IF SO - - - THIS PAMPHLET  
SHOULD INTEREST YOU.**

In it we wish to impress upon you the  
advantages available to a Resident  
Medical Officer in the - - -

*Ballarat & District  
Base Hospital*

Inside Front Cover :

Ballarat Base Hospital from the air.



Sturt Street Gardens, a place of rest amid the hustle and bustle of commercial life in the centre of the City, is always a place of beauty as well.



This aerial view of the central area of the Botanical Gardens, Ballarat, shows to advantage this sanctuary of beauty and relaxation.

## *About the Hospital*

FOR 113 YEARS the Ballarat & District  
Base Hospital has served the City  
of Ballarat and the surrounding district which  
ranges from Lismore, Streatham, Ararat  
and Stawell in the west, St. Arnaud,  
Moryborough, Avoca and Donald to the north  
and Daylesford and Bacchus Marsh to  
the east.

The daily bed average is 185 and  
there are over 260 beds. Last year 5,949  
inpatients, 20,356 casualties and 72,963 out-  
patient attendances were recorded. The

Honorary Medical Staff is active and  
helpful to Residents and in all it is a very  
happy institution. The hospital is  
accredited for post graduate training  
purposes with Royal Australian  
College of Surgeons.

\*

*Your Year* will be divided into periods to be spent caring for patients in the following Departments:—

**GENERAL SURGERY**

**SURGERY, UROLOGY  
AND GYNAECOLOGY**

**CASUALTY AND ADMITTING**

**MEDICINE AND PAEDIATRICS**

**MEDICINE AND OBSTETRICS**

**E.N.T. OPHTHALMOLOGY  
ANAESTHETICS  
PSYCHIATRY AND  
DERMATOLOGY**

Senior Resident Appointments  
are also available

THIS Department is busy. The range of surgery is wide and includes all major surgery, including orthopaedic surgery, but excluding elective neurosurgery and thoracic surgery. In

## SURGERY

comparison it would differ little from work done in general surgical units in teaching hospitals. There is a greater proportion of acute emergency surgery and of trauma, the latter because the hospital accepts many accident cases from the Western Highway. The average adult daily bed occupancy is 44. There are also paediatric surgical cases.

Surgical residents are trained in the basic principles of diagnosis and treatment in both the Wards and Outpatients. In the theatre, training includes the correct handling of instruments and operative procedures and you will be permitted to do straight forward operations under supervision. The extent of this usually depends on your basic ability and interest in surgery and usually proceeds to the performance of such operations as appendicectomy, herniorrhaphy and the closed reduction of fractures etc.

\* \* \*

DURING your term at Ballarat Base Hospital, you are rostered to spend a certain amount of time associated with the department of Anaesthesia. By prior arrangement with the anaesthetists, R.M.O's. so interested are encouraged to gain

## ANAESTHESIA

experience in modern anaesthesia at regular theatre sessions.

The department provides a wide experience in all the surgical departments of the hospital and last year there were approximately 1,500 public cases, including 150 accident cases requiring intensive preoperative and postoperative resuscitation. The Anaesthetic Department also co-operates in the care of head injuries, drug overdosage (using forced diuresis and peritoneal dialysis) and cases of acute respiratory insufficiency (using ventilating equipment). The Intensive Care Unit is supervised by the Senior Specialist Anaesthetist.





Loke Wendauree attracts great crowds of pleasure-seekers in the summer and autumn seasons. Here, at Power House corner, the young people are enjoying themselves in various ways.



Beautiful Eureka Reserve, a favourite picnic spot, showing the fountain and monument flanked by specimen trees.



THERE are two adult medical wards. Here you will gain experience in the investigation and treatment of all varieties of medical conditions. The average daily bed occupancy is 36. There are regular ward rounds in which all patients are discussed. You also conduct consultations with the various

## MEDICINE

specialist services such as Radiology, Psychiatry, Pathology etc. There are intensive care and Coronary care facilities. Outpatient sessions are held and special cases are dealt with in the Diabetic clinic and Cardiac clinic. The hospital also had a Sanitarium and Chest Clinic under aegis of the Department of Health for the care of pulmonary tuberculosis patients in the area. The breadth of experience available here is not seen in teaching hospitals and you also gain from your more intimate association with referring general practitioners.

\* \* \*

DURING your term shared with medicine, you will be in charge of two paediatric wards, usually about 20 beds. Two ward rounds are carried out each week and you will also attend the Paediatric outpatient clinic in which new patients,

## PAEDIATRICS

ward reviews and follow up consultations are conducted. Sick babies in the neonatal nurseries come into your sphere here as well as in your Obstetric session and there the commonest problem is neonatal jaundice.

The range of conditions you will manage is wide. Feeding problems and respiratory infections are common, but acute medical emergencies such as dehydration, meningitis and heart failure keep you on your toes. The interesting chronic medical conditions are always present in outpatients: fibrocystic disease, bronchiectasis, epilepsy, retardation and all manner of sick children.

THERE are two Consultants in this Department. Each conducts a pre and post-natal clinic, gynaecological outpatients and

## OBSTETRICS AND GYNAECOLOGY

operating session, and obstetrical and gynaecological ward rounds each week. During the year approximately

300 gynaecological operations are performed, one-third being major procedures.

There are approximately 200 confinements, covering the full range of obstetrical complications. In addition, there is a well equipped premature nursery. By the end of the rostered duty time you will be capable of managing any normal midwifery patient and should be familiar with the majority of problems which are likely to be encountered in practice.

\* \* \*

THERE is a busy weekly out-patient clinic at which Residents are welcome as observers. Approximately 200 new patients and 400 follow-ups are seen annually. Ward consultations amount

## PSYCHIATRY

to approximately 200 patients annually but patients for major inpatient psychiatric treatment

are referred to the Mental Health Department which has extensive facilities in Ballarat. The bulk of your psychiatric patients will be neurotics, personality disorders, and attempted suicides, with occasional psychotic patients. Your main experience will be in case taking and psychiatric diagnosis.

\* \* \*

ABOUT 220 genitourinary admissions are made to the unit annually. This brings about 75 patients for prostatectomy, half of whom are dealt with by endoscopic resection. The remainder display the normal spectrum of urological disorders

## UROLOGY

including some paediatric urology.

There are two ward rounds, one operating session and one out-patient clinic each week. You will become familiar with the investigation of G.U. problems, with procedures such as sounding, catheterization, cystoscopy and with the post operative management of G.U. patients.



THE Peter MacCallum clinic which is established in Melbourne with branches throughout Victoria, is concerned with the clinical care of cancer patients and related research. This

## RADIO THERAPY

quirements relating to this speciality.

embraces radiotherapy, chemotherapy, surgery and other medical re-

The Ballarat Branch of the Peter MacCallum clinic conducts 8 half day sessions per month, dealing with about 10 new patients and 150-200 review patients. The Hon. Therapeutic Radiologist also supervises inpatients having superficial X-Ray therapy, cytotoxic drugs and hormones in the treatment of their neoplasms. A wide variety of patients with neoplasms are seen in the clinic, particularly sufferers from the reticulosos.

\* \* \*

## OTORHINOLARYNGOLOGY

IN this department you will see about 150 outpatients (approximately 40 being new patients) per month. All new patients are discussed fully and techniques of examination practiced and explained. Particular emphasis is placed on E.N.T. emergencies. You will perform approximately 12 Tonsillectomies and Adenoidectomies, and carry out smaller outpatient procedures e.g. ontrum washouts, nasal cautery etc.

You will observe and assist at a number of surgical procedures such as S.M.R's., intranasal and radical antrastomies, myringotomies and endoscopic procedures. You will have the opportunity to watch the various procedures involving all aspects of micro-surgery of the ear as well as simple mastoidectomies.

You will also have an opportunity to observe the treatment of recent traumatic nasal deformities, as well as elective correction by rhinoplasty.

Facilities for investigation of deafness and vertigo at all ages, and a training school for deaf children provide additional interests available in Ballarat.

ALL types of ocular disorders are seen and treated in the weekly outpatients clinic. The operating session typically includes cataract, glaucoma, squint, adnexal, and post-traumatic surgery. Word rounds are conducted as required. Proficiency in recognizing common conditions and treating them is emphasized together

## OPHTHALMOLOGY

with specialized techniques of examining muscle balance, the anterior segment, and the fundus. Perspective on refractive correction and major surgery is encouraged by active assistance. Fortnightly orthoptic clinics are also held.

\* \* \*

THIS department is busy and has sections devoted to bacteriology, haematology, histology, biochemistry and morbid anatomy. You can obtain all

## PATHOLOGY

the help you are trained to use, and consultation with the Pathologist is always helpful in sorting out the difficult problems. You are encouraged to be present or to perform postmortems on your own patients. A clinical side room will be available for you to carry out blood counts and other basic examinations on your patients should you wish to do so. This is in addition to complete on call cover by qualified technical staff.

\* \* \*

THE department covers a broad range of work. A high standard of diagnostic radiology is provided, from routine films through tomography and intravenous pyelography and cholangiography to angio-

## RADIOLOGY

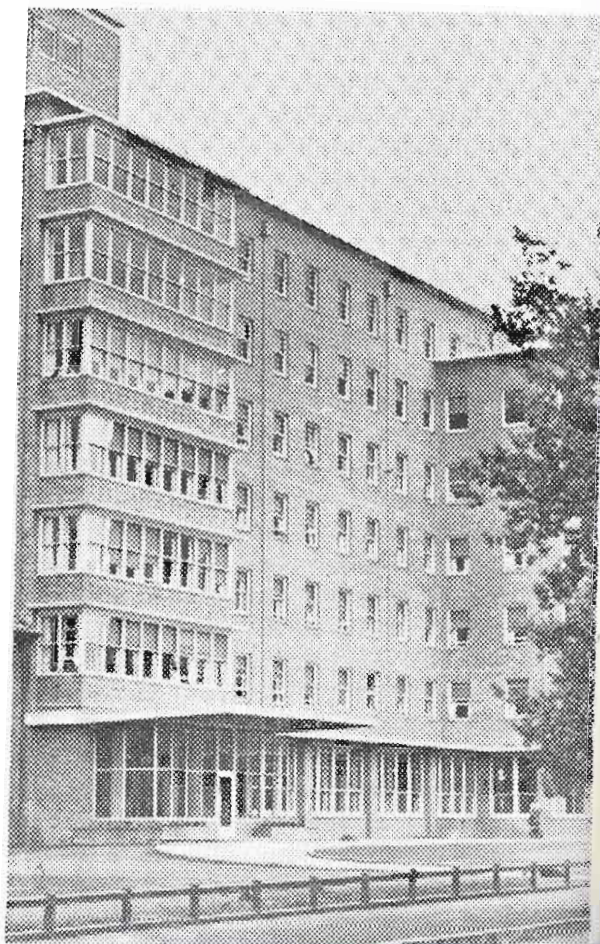
graphy. For the latter we have a modern automatic film changer and for screening we have television linked image intensification.

You can learn to use one of the portable machines and to develop films. You are encouraged to "follow up" cases and discuss the investigations with the Diagnostic Radiologists. The department also possesses a valuable library of interesting films which are indexed under diseases. This is a valuable tool for the post graduate student.





Joe White  
Flats for  
accommodation  
needs of the  
hospital's  
senior  
professional  
staff.



Modern spacious  
Nurses' Building

THIRTY-FIVE thousand new patients attend casualty each year. You will spend rostered hours of duty in this department. The new casualty block was opened in 1968, giving us a

## CASUALTY

building with all modern facilities for resuscitation, observation and treatment of casualties and new patients. There is a large well equipped shock ward, a six bed observation and receiving ward as well as a well equipped casualty theatre, plaster room and X-ray facilities. There is a small laboratory giving facilities for resident medical officers to practice everyday laboratory procedures.

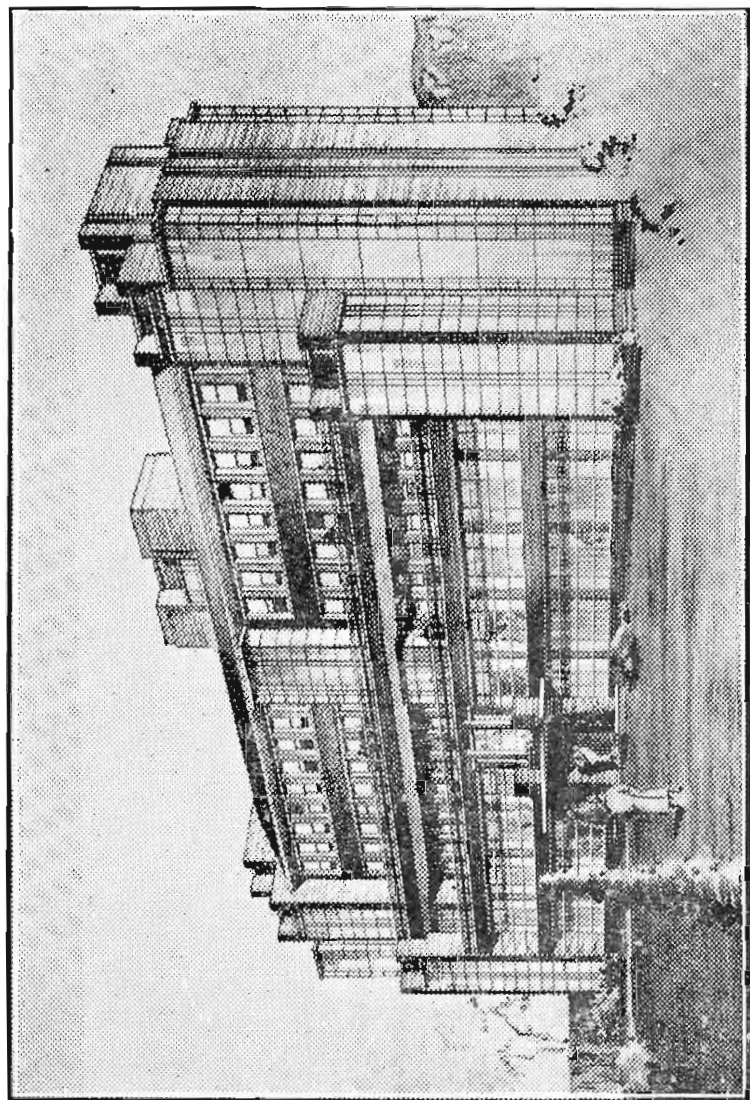
---

## THE ANCILLARY SERVICES

---

There are fully staffed and equipped departments of Dental Surgery, Physiotherapy, Pharmacy, Dietetics and Speech Therapy. An Orthoptist visits the hospital and a Welfare Sister is also employed. The Physiotherapy Department is most likely to interest you and preoperative and post-operative care is routine, as is the rehabilitation of patients from Medical Wards. Antenatal training is a regular part of their work.





"Yuille House," Ballarat Base Hospital.

## *Married Quarters?*

**YES - - - we have new, fully furnished flats. The accommodation in the "Joe White Flats" was planned with YOU in mind.**

These flats are opposite the hospital, 3 one bedroom units and 2 two bedroom units. They are so completely equipped you need only bring yourselves. We apologize that the following items can only be obtained by hire:—teotowels, bothtowels, sheets, pillow coses, cutlery, electric iron, and vacuum cleaner. Don't worry about this however far if you needed all of them it would only cost a few cents per week.

Of course you cannot cloim your living out allowance when you occupy one of these flots, and you also have to pay for electricity, gas, fuel and telephone calls.

If you are single there is excellent accommodation awaiting you also, including private rooms, modern shower and toilet black, pantry, sitting room and T.V. lounge.

## *About Ballarat*

All the facilities for modern living are to be had here. Our proximity to Melbourne (1½ hours safe drive) makes week-ends at home easy for you. In the district there is a wealth of interest to the nature lover, historian, golfer, gourmet, water skier, prospector or enthusiast for the preservation of steam engines. Don't believe what people say about the weather — it is the same as Melbourne's but 5° colder — quite an advantage in summer.

You should bear in mind that the prospects for entering general practice in this district are good, all types of practice from solo to large groups exist and new blood is always in demand.

The population of the city of Ballarat, and adjoining municipalities is approximately 60,000 persons.

A wide variety of well established secondary industries helps to stabilize the economy of the city and this solid industrial growth appears to be continuing.

If you are seriously interested in taking advantage of this suggestion please contact, preferably by a short letter:—

Dr. JOHN BEGG,  
Medical Superintendent,  
Ballarat & District Base Hospital,  
BALLARAT. 3350. 'Phone 2 1771.